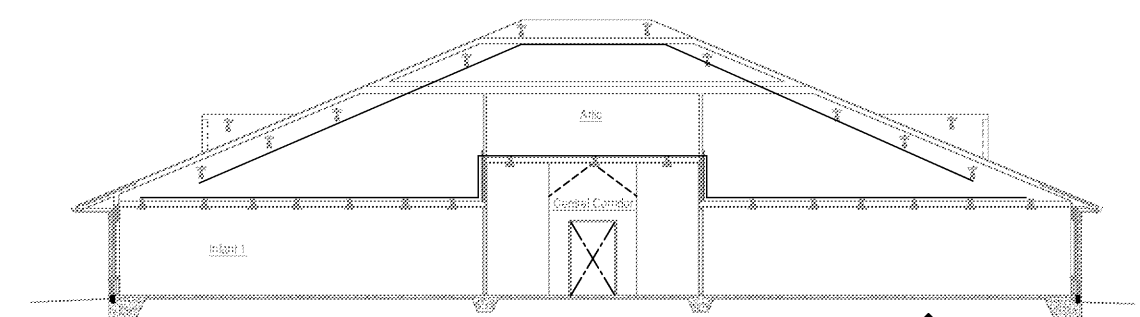
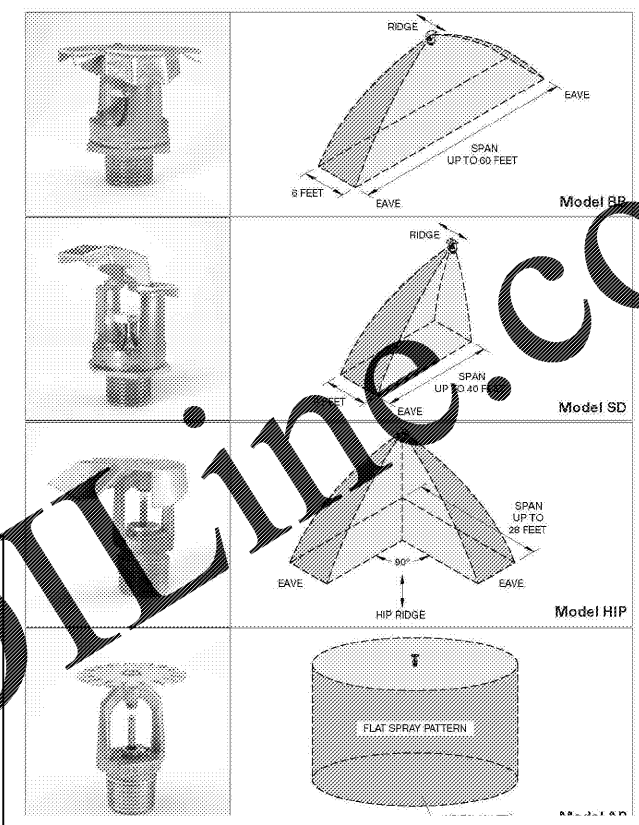


Longitudinal Building Section
Not to scale



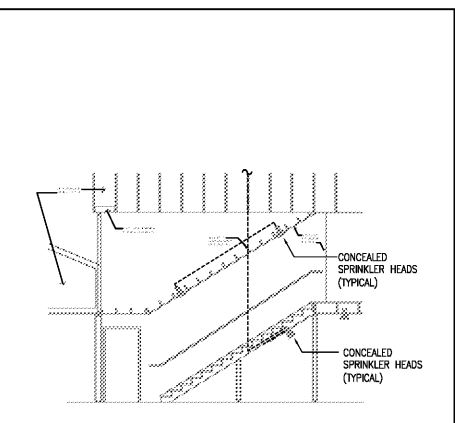
Longitudinal Building Section
Not to scale

SPRINKLER NOTES

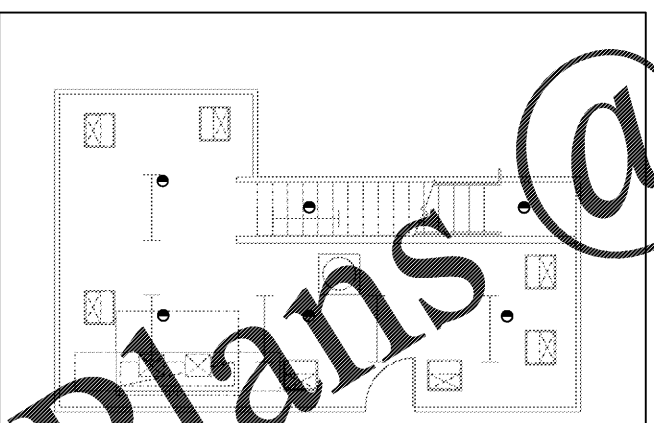
THE WET SPRINKLER SYSTEM SHALL BE INSTALLED IN ACCORDANCE WITH NFPA #13 (LATEST EDITION) AND NFPA #14 (LATEST EDITION).
HOSE STREAM TO MEET OR EXCEED THE REQUIREMENTS OF NFPA #13 AND LOCAL AUTHORITY.
THESE DRAWINGS ARE PERFORMANCE SPECIFICATION ONLY AND ARE ONLY INTENDED TO CONVEY. IT IS THE RESPONSIBILITY OF THE FIRE SPRINKLER CONTRACTOR TO SUBMIT SIGNED AND SEALED DRAWINGS AND HYDRAULIC CALCULATIONS TO THE AUTHORITY HAVING JURISDICTION AS DEFINED IN NFPA #13, WORKING PLANS.
THE CONTRACTOR SHALL PROVIDE ALL MATERIAL LABOR, TRUCKING, HOISTING, ENGINEERING SCAFFOLDING POWER HOOK UP'S PROTECTION SHOP DRAWINGS, LAYOUT, EQUIPMENTS, SUPERVISION, INSURANCE, ETC. NECESSARY FOR THE FURNISHING AND INSTALLATION OF ALL SPECIFIED AND RELATED WORK IN ACCORDANCE WITH THE CONTRACT DRAWINGS AND SPECIFICATIONS.
THE CONTRACTOR SHALL GIVE ALL NECESSARY NOTICES, APPLY FOR ALL PERMITS AND PAY ALL GOVERNMENTAL TAXES, FEES AND SEAL ALL NECESSARY PLANS ALL DOCUMENTS AND OBTAIN ALL NECESSARY APPROVALS FORM ALL DEPARTMENTS HAVING JURISDICTION, AND DELIVER SAME TO THE OWNER BEFORE REQUEST FOR ACCEPTANCE AND FINAL PAYMENT FOR THE WORK.
THE CONTRACTOR SHALL COORDINATE WORK WITH ALL OTHER TRADES. CONTRACTOR TO COORDINATE FIRE PROTECTION EQUIPMENT LOCATIONS TO AVOID LIGHTS AND AIR DIFFUSERS.
PIPE MATERIAL AND HANGERS AND INSTALLATION METHODS SHALL BE IN ACCORDANCE WITH LATEST EDITION OF NFPA #13.
IT IS THE FIRE SPRINKLER CONTRACTOR'S RESPONSIBILITY TO PROVIDE ADEQUATE SPRINKLER COVERAGE IN AREAS OUTSIDE SCOPE OF WORK THAT BECOME PROTECTED BY EXISTING SPRINKLERS DUE TO NEW CONSTRUCTION.

GENERAL SPRINKLER NOTES

THE POINT OF SERVICE IS INDICATED AT THE BACKFLOW PREVENTER. AT THIS POINT, THE SYSTEM IS DEDICATED SOLELY FOR FIRE PROTECTION PURPOSES. NO DOMESTIC WATER SHALL BE TAKEN FROM THE SYSTEM BEYOND THIS POINT FOR OTHER PURPOSES.
THE FOLLOWING ARE APPLICABLE STANDARDS:
FLORIDA FIRE PREVENTION CODE, 2010 EDITION.
NFPA 13, 2007 EDITION, INSTALLATION OF SPRINKLER SYSTEMS.
NFPA 24, 2007 EDITION, STANDARD FOR THE INSTALLATION OF PRIVATE FIRE SERVICE MAINS AND FIRE APPURTENANCES.
NFPA 25, 2008 EDITION, INSPECTION, TESTING AND MAINTENANCE OF WATER BASED FIRE PROTECTION SYSTEMS.
CLASSIFICATIONS OF HAZARD OCCUPANCIES FOR THE AREAS OF DESIGN SHALL BE AS FOLLOWS:
(CORRIDORS, RESTROOMS, OFFICES AND CLASSROOMS)
THE SPRINKLER SYSTEM SHALL BE WET PIPE FOR LIGHT HAZARD OCCUPANCY AND SHALL BE HYDRAULICALLY CALCULATED PER NFPA #13 2007 EDITION AS A DENSITY OF 0.15 GPM/SQ.FT. OVER THE MOST REMOTE #500 SQ.FT. SPRINKLER SHALL HAVE A TEMPERATURE RATING OF 155°F AND THE SPACING SHALL BE 225 SQ.FT. include a fire hose allowance of 100 gpm.
WATER SUPPLY: THIS BUILDING WILL BE SUPPLIED BY A NEW 6" UNDERGROUND FIRE MAIN WHICH CONNECTS TO TO AN EXISTING 6" WATER MAIN LOCATED AT THE FRONT.
MOST RECENT FLOW TEST DATA, SHALL BE PROVIDED BY GENERAL CONTRACTOR.
VALVE AND ALARM REQUIREMENTS: ALL CONTROL VALVES ON THE SPRINKLER RISER AND BACKFLOW PREVENTER SHALL HAVE TAMPER SWITCHES.
FLOW SWITCHES SHALL BE SET NOT TO ALARM WITH MINOR CITY WATER PRESSURE FLUCTUATIONS. HOWEVER THE FLOW OF ONE SPRINKLER HEAD SHALL PRODUCE AN ALARM CONDITION BY TRIPPING THE FLOW SWITCH.
ALL FLOW AND TAMPER SWITCHES SHALL ALSO SOUND THE ELECTRIC ALARM BELL ON THE OUTSIDE WALL.
FIRE SPRINKLER CONTRACTOR SHALL VERIFY AND TEST PER NFPA #13.
THE LOCAL WATER PURVEYOR IS REQUESTED TO ADVISE THE ENGINEER OF RECORD IF CONDITIONS EXIST IN THEIR WATER SUPPLY THAT COULD LEAD TO MIC. SO THAT THE ENGINEER CAN DESIGN CORRECTIVE MEASURES.
BACKFLOW PREVENTER AND METERING SPECIFICATIONS SHALL MEET OR EXCEED REQUIREMENTS OF LOCAL JURISDICTION.
YARD AND INTERIOR FIRE PROTECTION COMPONENTS:
PRODUCT DATA SHEETS SHALL BE SUBMITTED BY THE SPRINKLER CONTRACTOR ALONG WITH THEIR SHOP DRAWINGS.
ALL FIRE PROTECTION DEVICES AND COMPONENTS SHALL BE UL LISTED AND FM APPROVED.



Stair well
Not to scale



Attic Floor Plan
Not to scale

SPRINKLER HEAD SCHEDULE			
TYPE	K ⁺ FACTOR	SYMBOL	HEAD FINISH
ATTIC SPRINKLER HEADS	5.6	○	CHROME
CONCEALED SPRINKLER HEADS	5.6	●	CHROME
UPRIGHT SPRINKLER HEADS	5.6	⊙	CHROME

DESIGN CRITERIA	
OCCUPANCY:	LIGHT HAZARD CLASSIFICATION
DESIGN DENSITY:	10 GPM/SQ FT
AREA OF APPLICATION:	1950 SQ FT
COVERAGE PER HEAD:	130 SQ FT MAX.
HOSE STREAMS:	100 GPM

FIRE HYDRANT FLOW TEST	
DAVE SCHMITT ENGINEERING	
ADDRESS : 2601 WEST LAKE MARY BLVD.	
NO. DATE	REMARKS
REVISIONS	
1 03.07.18 Rkg. & Fire Dept. Comments	
RESIDUAL PRESSURE : 56 PSI @ 1250 GPM	

INTERPLAN
ARCHITECTURE
ENGINEERING
INTERIOR DESIGN
PROJECT MANAGEMENT
AA 003420
CA 8660
604 COURTLAND STREET
SUITE 100
ORLANDO, FLORIDA 32804
PH 407.645.5008
FX 407.629.9124

SEAL:
THIS DOCUMENT IS NOT FOR CONSTRUCTION
UNLESS THE ARCHITECT OR ENGINEER'S
SIGNATURE AND SEAL APPEAR BELOW.

NOT FOR
CONSTRUCTION

BID SET
04-10-18

1 03.07.18 Rkg. & Fire Dept. Comments
NO. DATE REMARKS
REVISIONS



RAINBOW CHILD CARE CENTER
C - PROTOTYPE
2609 W. LAKE MARY BLVD.
LAKE MARY, FL 32746

PROJECT NO: 2017.0250
DATE: 12.22.17

FP.200
FIRE PROTECTION DETAILS
AND NOTES

CHECKED: ROH DRAWN: PH

Order Plans @

INTERNET: RESERVE COPYRIGHTS & OTHER RIGHTS RESTRICTING THESE DOCUMENTS TO THE ORIGINAL SET OR PURPOSE FOR WHICH THEY WERE PREPARED. REPRODUCTIONS, CHANGES OR ASSIGNMENTS ARE PROHIBITED. COPYRIGHT © 2018