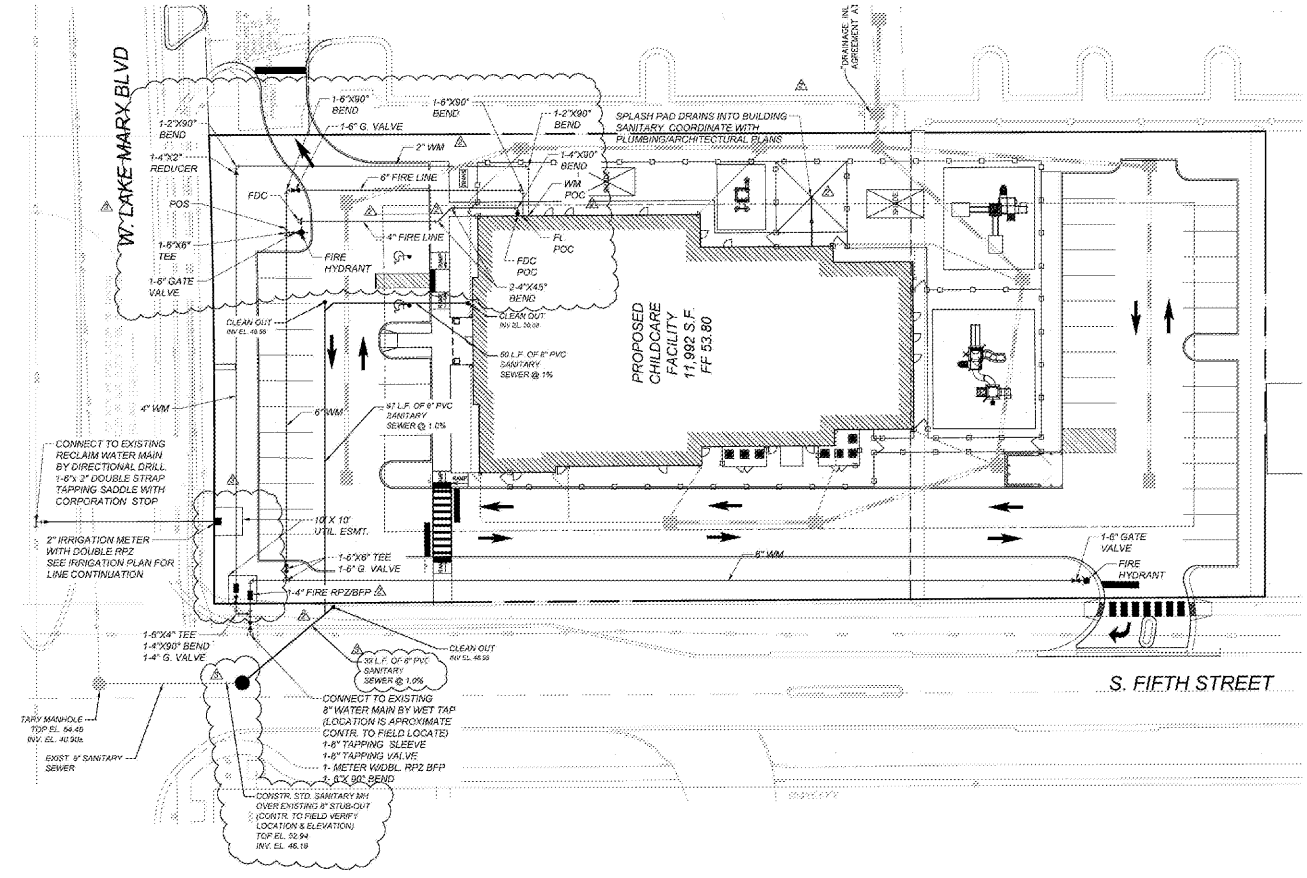


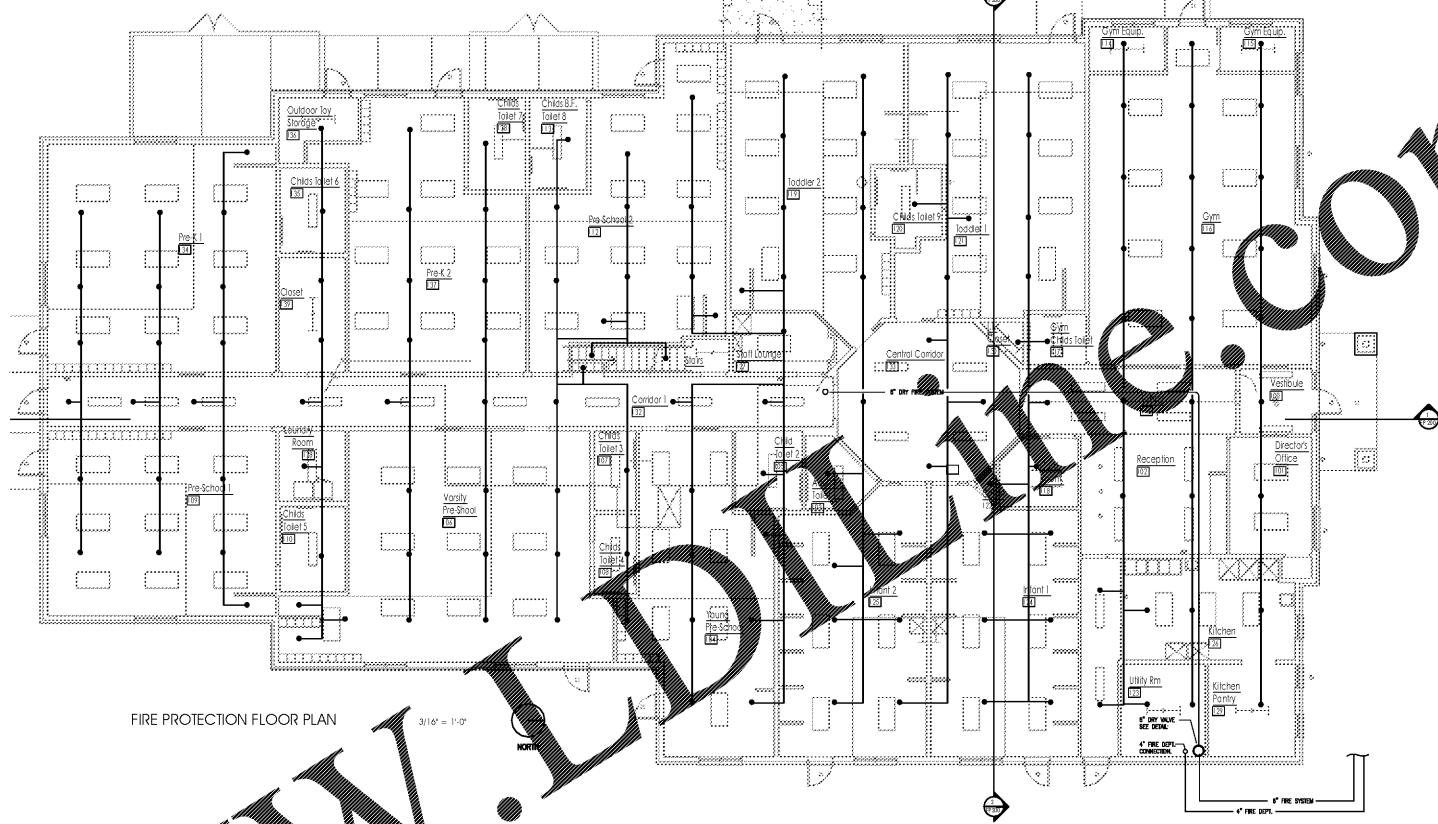
SEAL:  
THIS DOCUMENT IS NOT FOR CONSTRUCTION  
UNLESS THE ARCHITECT OR ENGINEER'S  
SIGNATURE AND SEAL APPEAR BELOW.

NOT FOR  
CONSTRUCTION

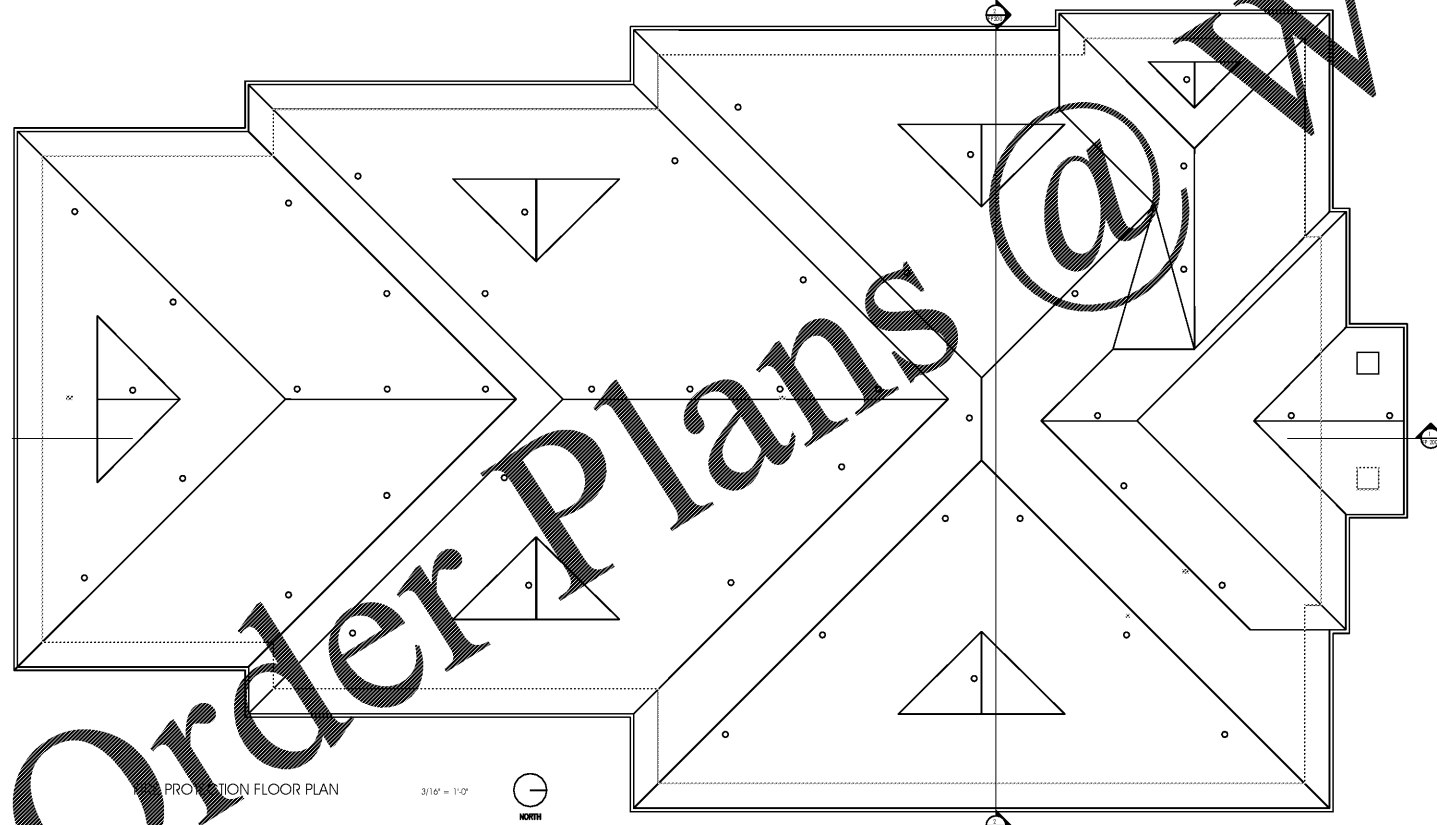
BID SET  
04-10-18



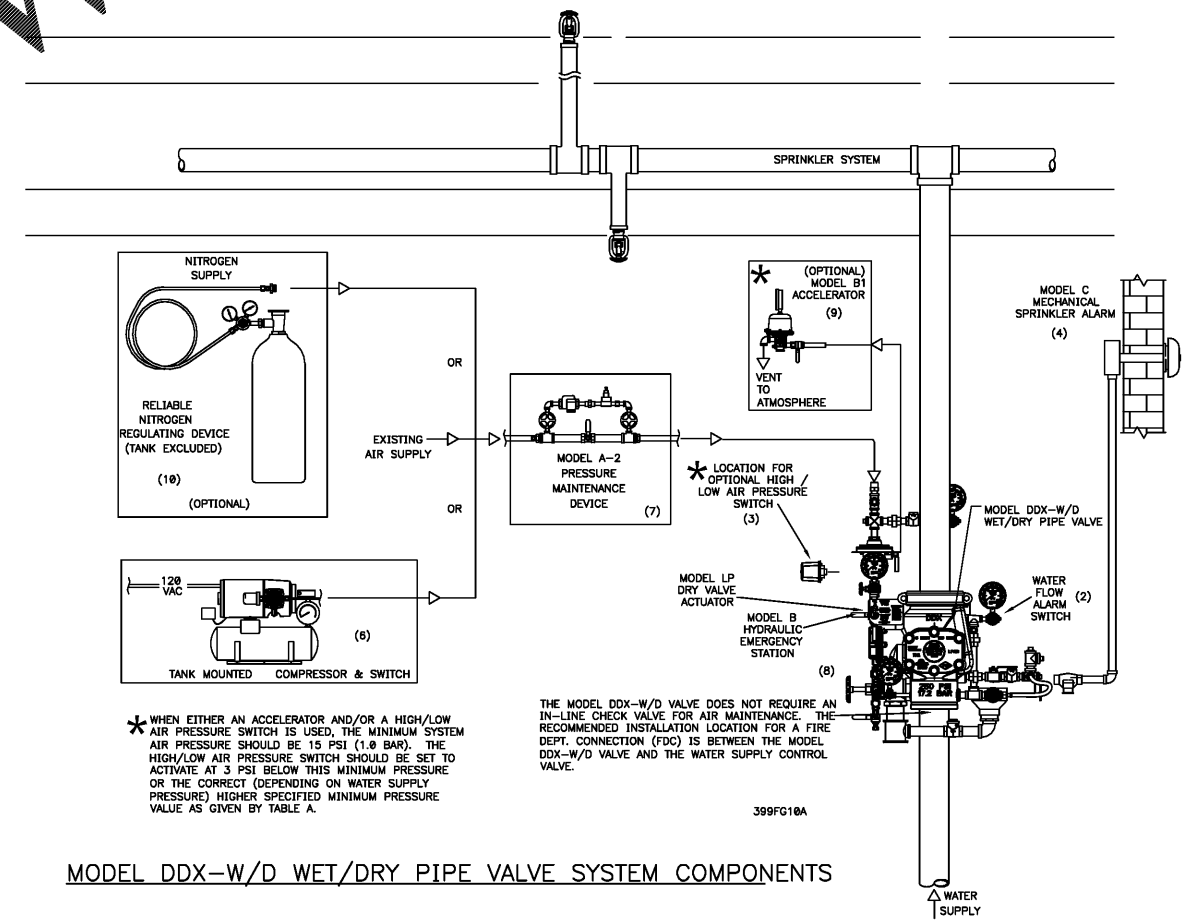
SITE PLAN  
N.T.S.



FIRE PROTECTION FLOOR PLAN  
3/16" = 1'-0"



PROTECTION FLOOR PLAN  
3/16" = 1'-0"



MODEL DDX-W/D WET/DRY PIPE VALVE SYSTEM COMPONENTS

\* WHEN EITHER AN ACCELERATOR AND/OR A HIGH/LOW AIR PRESSURE SWITCH IS USED, THE MINIMUM SYSTEM AIR PRESSURE SHOULD BE 15 PSI (1.0 BAR). THE HIGH/LOW AIR PRESSURE SWITCH SHOULD BE SET TO ACTIVATE AT 3 PSI BELOW THIS MINIMUM PRESSURE OR THE CORRECT (DEPENDENT ON WATER SUPPLY PRESSURE) HIGHER SPECIFIED MINIMUM PRESSURE VALUE AS GIVEN BY TABLE A.

THE MODEL DDX-W/D VALVE DOES NOT REQUIRE AN IN-LINE CHECK VALVE FOR AIR MAINTENANCE. THE RECOMMENDED INSTALLATION LOCATION FOR A FIRE DEPT. CONNECTION (FDC) IS BETWEEN THE MODEL DDX-W/D VALVE AND THE WATER SUPPLY CONTROL VALVE.

399FG18A

1 03.07.18 Bkg & Fire Dept. Comments  
NO. DATE REMARKS  
REVISIONS



RAINBOW CHILD CARE CENTER  
C - PROTOTYPE  
2609 W. LAKE MARY BLVD.  
LAKE MARY, FL 32746

PROJECT NO: 2017.0250  
DATE: 12.22.17

FP.100  
FIRE PROTECTION PLAN

CHECKED: ROH DRAWN: PH

Order Plans @ www.lpdwline.com