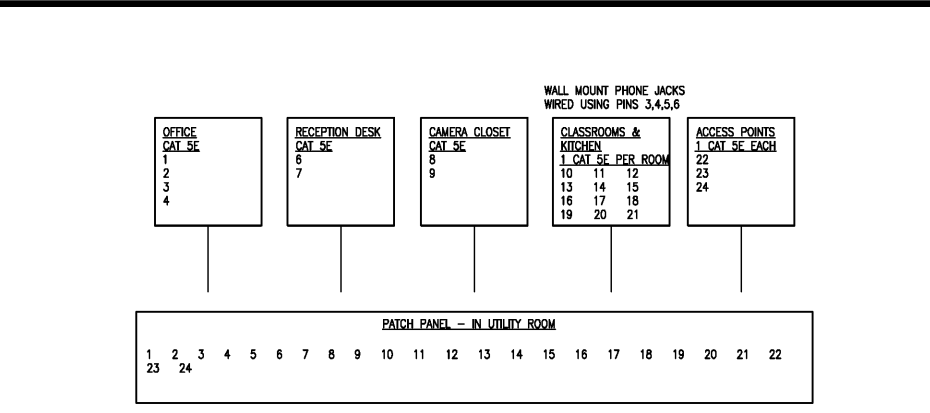
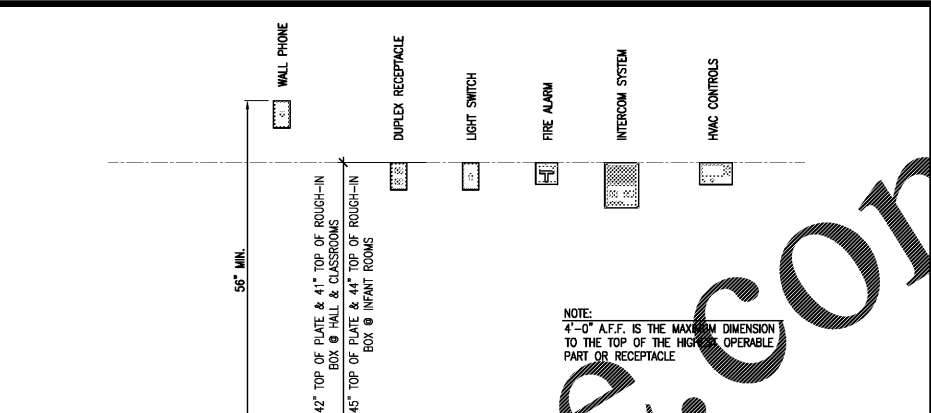


1 ONE LINE DIAGRAM NTS



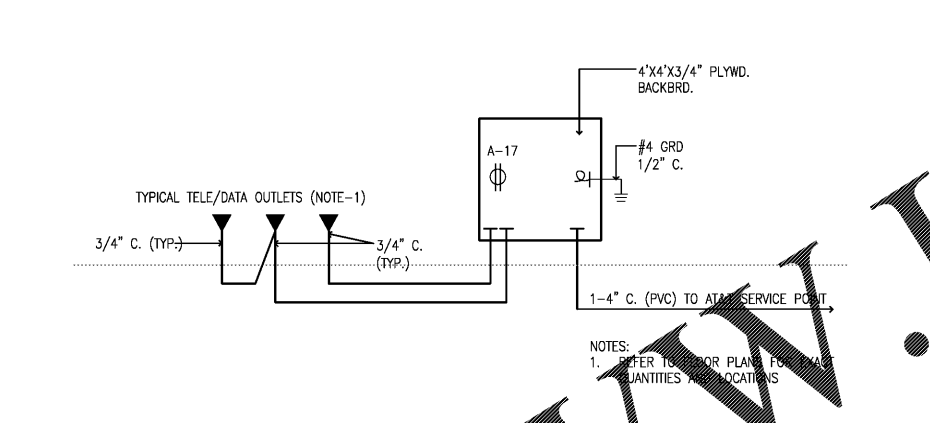
2 COMMS/DATA WIRING DIAGRAM NTS



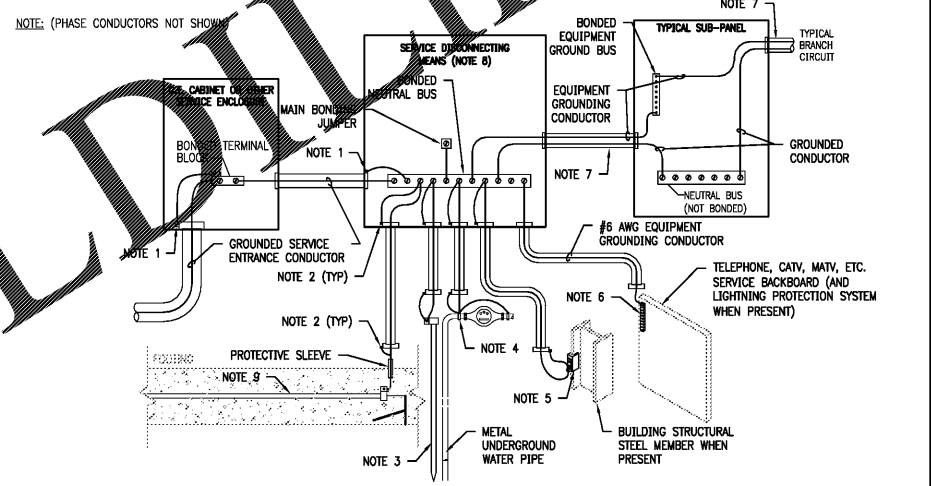
3 MOUNTING HEIGHTS NTS

KEYED NOTES

- UTILITY TRANSFORMER AND CONCRETE PAD. G.C. TO PROVIDE PAD PER UTILITY COMPANY'S INSTRUCTIONS. G.C. TO VERIFY WITH UTILITY.
- 800A, 120/208V, 3P, 4W CT CABINET. COORDINATE REQUIREMENTS AND INSTALLATION RESPONSIBILITIES WITH THE UTILITY COMPANY.
- 800A, 120/208V, 3P, 4W ELECTRIC METER. COORDINATE REQUIREMENTS AND INSTALLATION RESPONSIBILITIES WITH THE UTILITY COMPANY.
- UNDERGROUND SECONDARY CONDUCTORS/CONDUIT. (3) SETS OF (4) #400 KCMIL AL EACH SET IN A 5" CONDUIT FROM TRANSFORMER TO PANEL MDP VIA THE CT CABINET. GC TO COORDINATE REQUIREMENTS AND INSTALLATION RESPONSIBILITIES WITH THE UTILITY COMPANY.
- PROVIDE UNDERGROUND PRIMARY CONDUIT(S). GC TO COORDINATE REQUIREMENTS AND INSTALLATION RESPONSIBILITIES WITH THE UTILITY COMPANY.
- (4) #250 KCMIL AL (1) #4 GROUND AL (1) 2-1/2" CONDUIT.
- (2) SETS OF (4) #400 KCMIL AL (1) #2/0 GROUND AL (1) 3" CONDUIT.



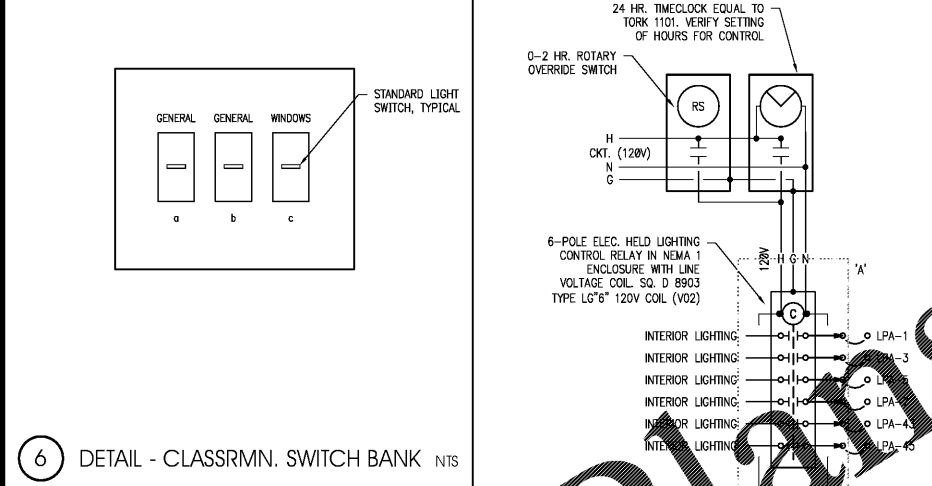
4 COMMUNICATIONS DETAIL NTS



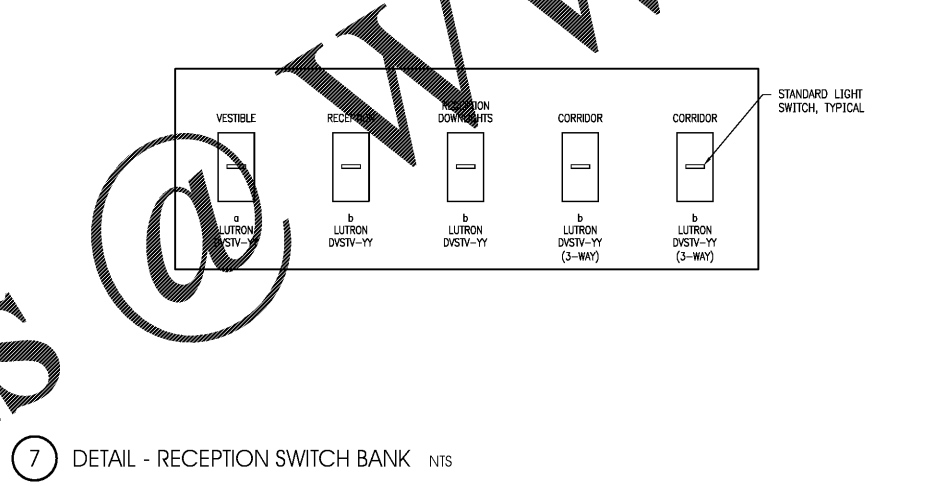
NOTES

- ALL METAL CONDUITS ENCLOSING ANY SERVICE CONDUCTORS SHALL BE FITTED WITH A "BONDING BUSHING". SIZE THE JUMPER PER NEC.
- ALL METAL CONDUITS ENCLOSING ANY GROUNDING ELECTRODE CONDUCTOR SHALL BE FITTED WITH A "BONDING BUSHING" AT EACH END. SIZE THE JUMPER PER NEC.
- PROVIDE AT LEAST ONE SUPPLEMENTAL GROUNDING ELECTRODE PER NEC IN THE FORM OF A 10'-0" x 3/4" COPPER CLAD GROUND ROD INSTALLED PER CURRENT NEC REQUIREMENTS.
- CONNECT TO THE BUILDING'S METAL UNDERGROUND WATER PIPE WITHIN 5'-0" OF ITS ENTRANCE INTO THE BUILDING AND JUMPER ANY WATER METER PER NEC REQUIREMENTS.
- IF STRUCTURAL STEEL MEMBER IS AVAILABLE, BOND IT TO THE SERVICE USING A UL LISTED IRREVERSIBLE CLAMP OR WELDED LUG.
- PROVIDE AN EQUIPMENT GROUND BAR AND ATTACH IT TO THE PHONE BOARD.
- ALL BRANCH CIRCUIT AND FEEDER CONDUITS ARE TO HAVE AN INSULATED EQUIPMENT GROUNDING CONDUCTOR REGARDLESS OF THE CONDUIT MATERIAL.
- WHEN THE SERVICE CONSISTS OF MULTIPLE DISCONNECTING MEANS IN SEPARATE ENCLOSURES, CONNECT A TAP CONDUCTOR FROM THE MAIN GROUNDING ELECTRODE CONDUCTOR TO EACH DISCONNECTING MEANS. SIZE THIS TAP BASED ON THE LARGEST SERVICE CONDUCTOR IN THAT SERVICE DISCONNECT ENCLOSURE.
- PROVIDE A GROUNDING ELECTRODE ENCASED IN AT LEAST 2" OF CONCRETE AND LOCATED NEAR THE BOTTOM OF A CONCRETE FOUNDATION OR FOOTING THAT IS IN DIRECT CONTACT WITH EARTH. GROUNDING ELECTRODE SHALL CONSIST OF AT LEAST 20'-0" OF ONE OR MORE BARE OR ZINC GALVANIZED OR OTHER ELECTRICALLY CONDUCTIVE COATED STEEL REINFORCING BARS OR RODS OF NOT LESS THAN 1/2" IN DIAMETER OR AT LEAST 20'-0" OF #4 AWG BARE COPPER CONDUCTOR.

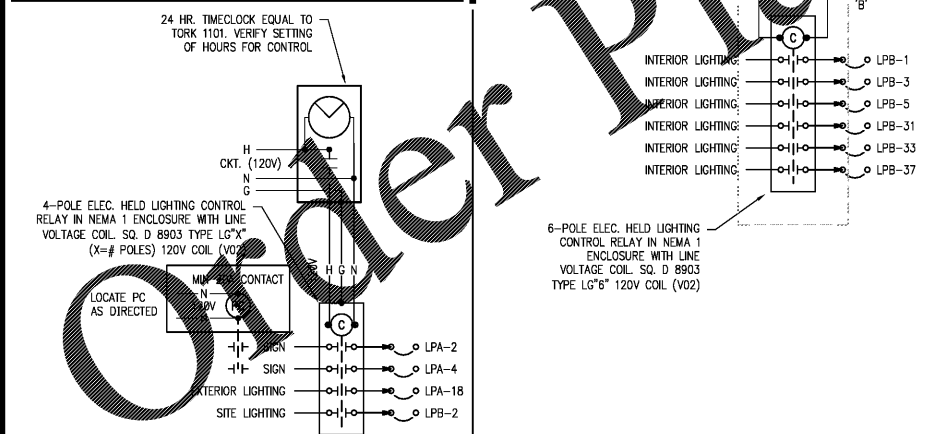
5 MAIN SERVICE ENTRANCE GROUND CONNECTIONS N.T.S



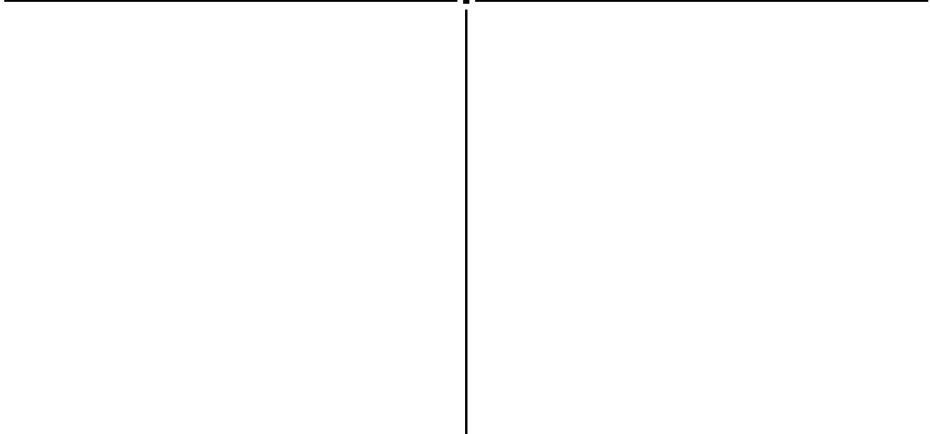
6 DETAIL - CLASSRMN. SWITCH BANK NTS



7 DETAIL - RECEPTION SWITCH BANK NTS



8 LIGHTING CONTROLS - EXTERIOR NTS



9 LIGHTING CONTROLS - INTERIOR NTS

SEAL:  
THIS DOCUMENT IS NOT FOR CONSTRUCTION  
UNLESS THE ARCHITECT OR ENGINEER'S  
SIGNATURE AND SEAL APPEAR BELOW.

NOT FOR  
CONSTRUCTION

BID SET  
04-10-18

1 03.07.18 BLDG DEPT COMMENTS  
NO. DATE REMARKS



RAINBOW CHILD  
CARE CENTER  
C - PROTOTYPE  
2609 W. LAKE MARY BLVD.  
LAKE MARY, FL 32746

PROJECT NO: 2017.0250  
DATE: 12.22.17

E.201  
ELECTRICAL DETAILS

CHECKED: AG DRAWN: DMS

Order Plans

WWW.LDOnline.com

INTERPLANS, LLC RESERVE COPYRIGHT & OTHER RIGHTS RESTRICTING THESE DOCUMENTS TO THE ORIGINAL SET OR PURPOSE FOR WHICH THEY WERE PREPARED. REPRODUCTIONS, CHANGES OR ASSIGNMENTS ARE PROHIBITED. COPYRIGHT © 2018