

SEAL:
THIS DOCUMENT IS NOT FOR CONSTRUCTION
UNLESS THE ARCHITECT OR ENGINEER'S
SIGNATURE AND SEAL APPEAR BELOW.

NOT FOR
CONSTRUCTION

BID SET
04-10-18

1 03.07.18 BLDG. & FIRE COMMENTS
NO. DATE REMARKS

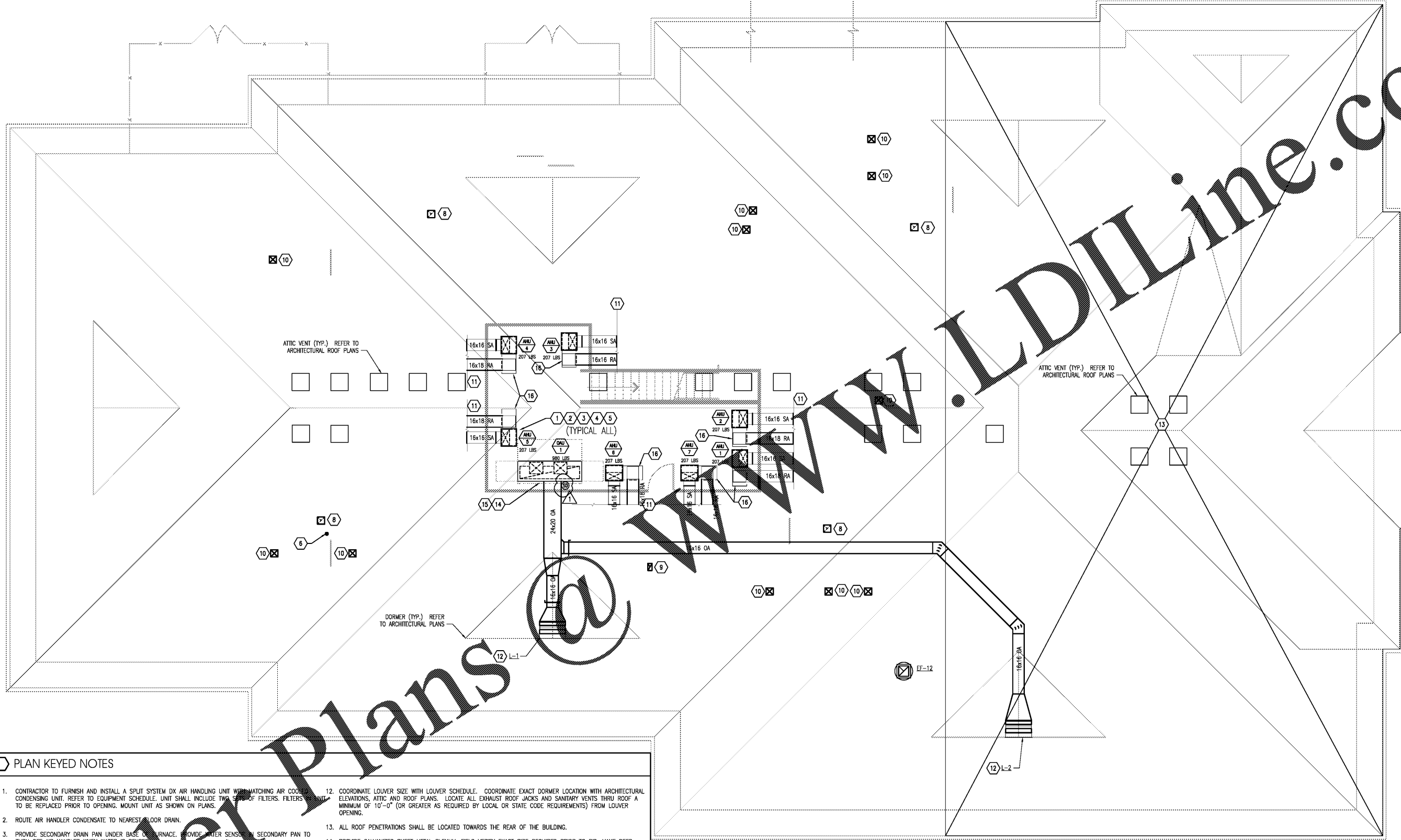


RAINBOW CHILD
CARE CENTER
C - PROTOTYPE
2609 W. LAKE MARY BLVD.
LAKE MARY, FL 32746

PROJECT NO: 2017.0250
DATE: 12.22.17

M.200
UPPER LEVEL MECHANICAL
PLAN

CHECKED: JL DRAWN: PH



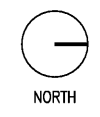
- PLAN KEYED NOTES
- CONTRACTOR TO FURNISH AND INSTALL A SPLIT SYSTEM DX AIR HANDLING UNIT WITH MATCHING AIR COOLING CONDENSING UNIT. REFER TO EQUIPMENT SCHEDULE. UNIT SHALL INCLUDE TWO SETS OF FILTERS. FILTERS IN UNIT TO BE REPLACED PRIOR TO OPENING. MOUNT UNIT AS SHOWN ON PLANS.
 - ROUTE AIR HANDLER CONDENSATE TO NEAREST FLOOR DRAIN.
 - PROVIDE SECONDARY DRAIN PAN UNDER BASE OF FURNACE. PROVIDE WATER SENSOR ON SECONDARY PAN TO TURN OFF AIR HANDLER WHEN WATER IS SENSED.
 - PROVIDE 2" MERV 8 PLEATED FILTER WITH HASSLED COVER IN RETURN AIR BEFORE ENTERING FURNACE. SEE DETAIL.
 - PROVIDE VIBRATION ISOLATION PADS UNDER EACH CORNER OF THE AIR HANDLER. PROVIDE FLEXIBLE CONNECTIONS AT THE SUPPLY AND RETURN CONNECTIONS TO THE FURNACE.
 - DRYER VENT THRU ROOF. SEE DETAIL 7/M.400 FOR WINDSECK INSTALLATION REQUIREMENTS. DRYER VENT SHALL BE CONSTRUCTED IN ACCORDANCE WITH SECTION 504 OF THE INTERNATIONAL MECHANICAL CODE.
 - USED.
 - EXHAUST DUCT UP TO GREENHECK RJ-10x10 ON ROOF. COORDINATE ROOF PENETRATION WITH ROOFING CONTRACTOR.
 - 6x9 EXHAUST DUCT UP TO GREENHECK RJ-6x9 ON ROOF. COORDINATE ROOF PENETRATION WITH ROOFING CONTRACTOR.
 - 10x10 RELIEF DUCT UP TO GREENHECK RJ-10x10 ON ROOF. COORDINATE ROOF PENETRATION WITH ROOFING CONTRACTOR.
 - SEE MAIN LEVEL MECHANICAL PLANS SHEET M.100 FOR CONTINUATION OF SUPPLY AND RETURN DUCTWORK.
 - COORDINATE LOUVER SIZE WITH LOUVER SCHEDULE. COORDINATE EXACT DORMER LOCATION WITH ARCHITECTURAL ELEVATIONS, ATTIC AND ROOF PLANS. LOCATE ALL EXHAUST ROOF JACKS AND SANITARY VENTS THRU ROOF A MINIMUM OF 10'-0" (OR GREATER AS REQUIRED BY LOCAL OR STATE CODE REQUIREMENTS) FROM LOUVER OPENING.
 - ALL ROOF PENETRATIONS SHALL BE LOCATED TOWARDS THE REAR OF THE BUILDING.
 - PROVIDE GALVANIZED SHEET METAL PLENUM. FIELD VERIFY EXACT SIZE REQUIRED PRIOR TO BID. MAKE DEEP ENOUGH TO TIE IN INTAKE DUCTS. INSULATE EXTERIOR OF PLENUM WITH MIN. OF R-2 INSULATION. FIELD VERIFY PRIOR TO BID AND FABRICATION.
 - CONTRACTOR TO PROVIDE BACK DRAFT DAMPER. VERIFY EXACT SIZE PRIOR TO BID.
 - PROVIDE OPENING IN RETURN DUCT WITH MOTORIZED DAMPER FOR OSA INTAKE. OSA PROVIDED BY OSA-1 INTO THE PLENUM SPACE. SEE SPLIT SYSTEM SCHEDULE ON SHEET M.300 FOR OSA REQUIREMENTS FOR EACH UNIT.

ALL MANUFACTURERS SHALL PROVIDE A FULL PARTS AND LABOR WARRANTY OF SUCH UNIT(S), FOR THE DURATION OF ONE YEAR BEGINNING FROM THE DATE OF START UP. IT IS UNDERSTOOD THAT ALL UNIT(S) ARE TO BE PROFESSIONALLY INSTALLED PER MANUFACTURER SPECIFICATIONS BY A LICENSED CONTRACTOR. THE GENERAL CONTRACTOR SHALL ASSUME FULL RESPONSIBILITY FOR ANY DAMAGE TO THE UNIT(S), BUILDING, AND ITS CONTENTS CAUSED BY DEFECTS OR IMPROPER INSTALLATION OF UNIT(S) OR MATERIALS INSTALLED. HE GENERAL CONTRACTOR SHALL BE RESPONSIBLE TO INSURE PROPER ACCESS AND MINIMUM CLEARANCES ARE MAINTAINED PER CODE, MAINTENANCE OPERATIONS AND MECHANICAL WORK. ALL MAINTENANCE OPERATIONS SHALL BE THE RESPONSIBILITY OF THE TENANT, FOLLOWING START-UP PROCEDURES.

REFRIGERANT PIPING NOTES
ALL REFRIGERATION PIPE INSULATION SHALL BE A MINIMUM OF 1" THICK BASED ON ASHRAE 6.8.3B. CONTRACTOR SHALL VERIFY WITH LOCAL CODE REQUIREMENTS PRIOR TO BID.
ALL REFRIGERATION PIPE INSULATION WHICH IS LOCATED OUTDOORS, MUST INCORPORATE A WEATHER RESISTANT PROTECTIVE FINISH, SUCH AS ARMACELL ARMAFLEX FINISH.
ALL REFRIGERATION PIPING INSTALLED OUTDOORS (EXPOSED TO AMBIENT) SHALL BE INSTALLED IN PVC JACKETS. RIC SHALL SUPPORT AND PROTECT REFRIGERATION PIPING AS REQUIRED. PVC JACKETS TO BE PROVIDED AND INSTALLED BY THE RIC.

UPPER LEVEL MECHANICAL PLAN

3/16" = 1'-0"



INTERNET/INTEL/REVERSE COPYRIGHT & OTHER RIGHTS RESTRICTING THESE DOCUMENTS TO THE ORIGINAL SITE OR PURPOSE FOR WHICH THEY WERE PREPARED; REPRODUCTIONS, CHANGES OR ASSIGNMENTS ARE PROHIBITED. COPYRIGHT © 2017