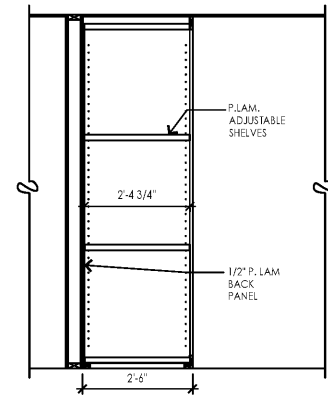
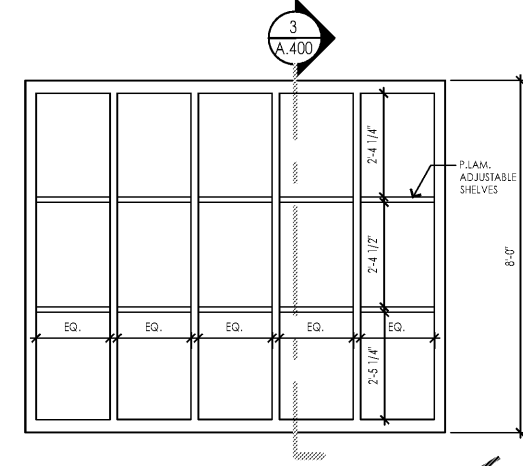


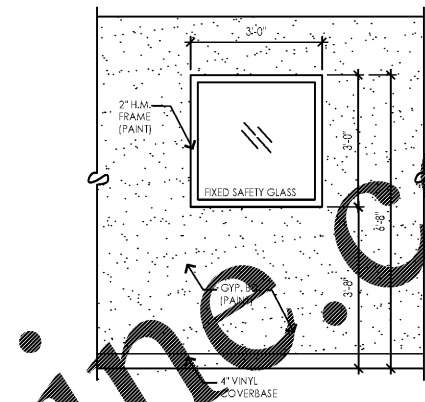
2 Gym Wall Elev.
Rm. 116 Scale: 1/2" = 1'-0"



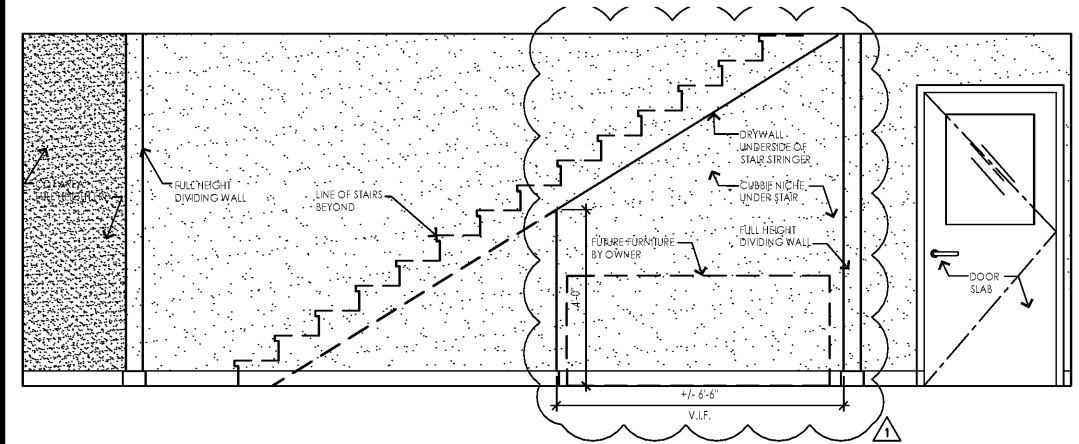
3 Cubby Section
Rm. 102 Scale: 1/2" = 1'-0"



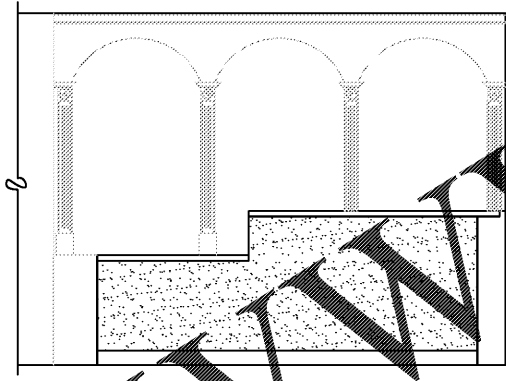
4 Car Seat Cubby Elev.
Rm. 102 Scale: 1/2" = 1'-0"



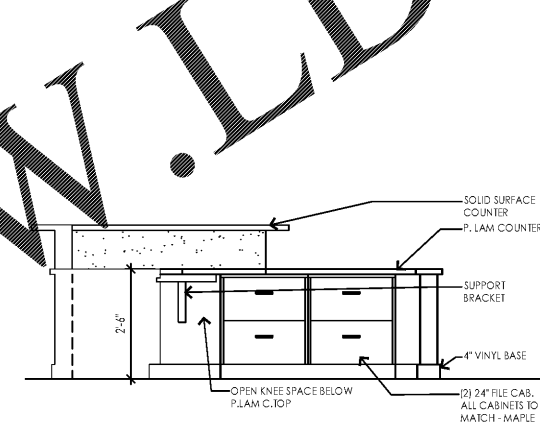
Corridor Window Elev.
Rm. 132 Scale: 1/2" = 1'-0"



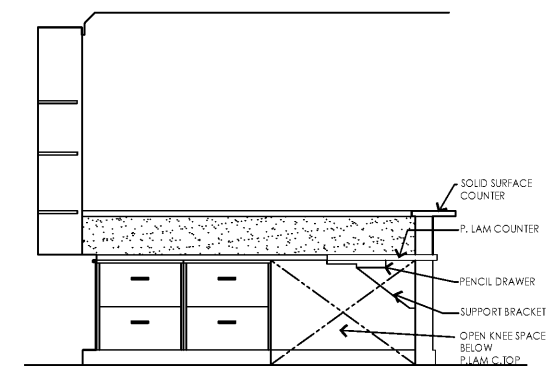
5 Stair Wall Elev.
Rm. 112 Scale: 1/2" = 1'-0"



10 Recep. Desk Elev.
Rm. 102 Scale: 1/2" = 1'-0"

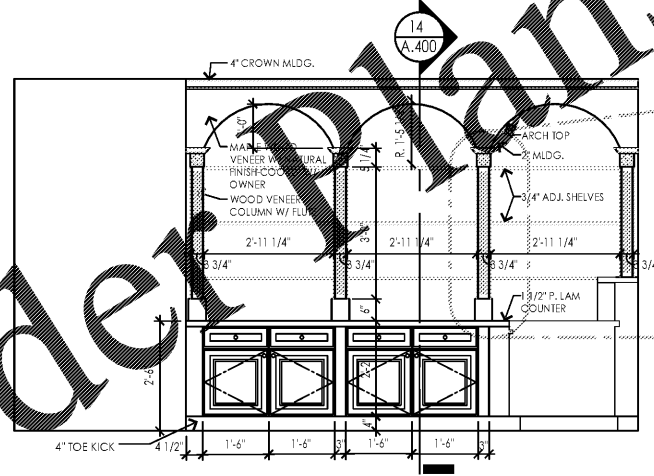


11 Recep. Desk Elev.
Rm. 102 Scale: 1/2" = 1'-0"

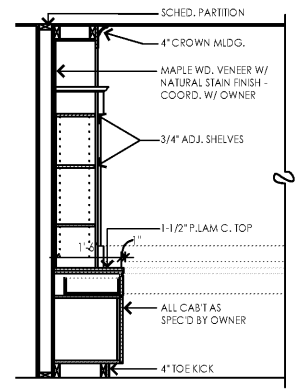


13 Recep. Desk Elev.
Rm. 102 Scale: 1/2" = 1'-0"

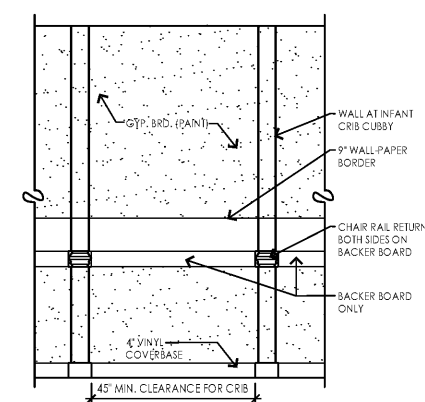
MILLWORK NOTES:
1. ALL RECEPTION COUNTERTOPS SHALL BE STANDARD P. LAM TOPS.
2. ALL COUNTERTOPS SHALL HAVE RADIUS CORNERS. NO SHARP EDGES SHALL BE PERMITTED.



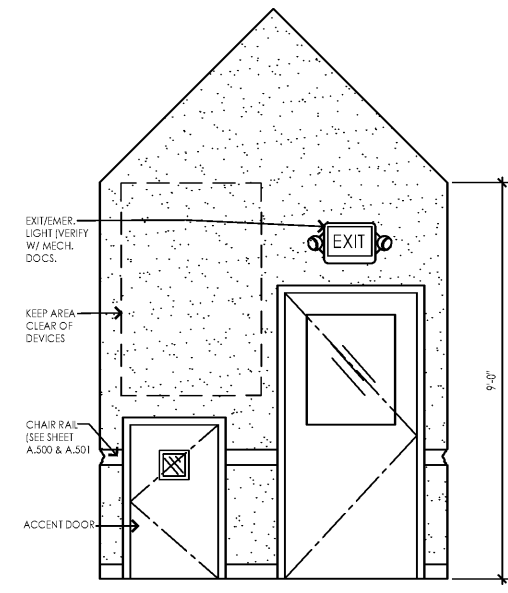
12 Recep. Desk Elev.
Rm. 102 Scale: 1/2" = 1'-0"



14 Recep. Desk Elev.
Rm. 102 Scale: 1/2" = 1'-0"



7 Crib Cubby Elev.
Scale: 1/2" = 1'-0"



15 Lobby Door Elev.
Rm. 111 Scale: 1/2" = 1'-0"

1 03.08.18 FIRE DEPT COMMENTS
NO. DATE REMARKS
REVISIONS



RAINBOW CHILD CARE CENTER
C - PROTOTYPE
2609 W. LAKE MARY BLVD.
LAKE MARY, FL 32746

PROJECT NO: 2017.0250
DATE: 12.22.17

A.400
INTERIOR ELEVATIONS

CHECKED: RC DRAWN: JC

Order Plans @

WWW.LDLINE.COM

COPYRIGHT © 2017 INTERPLANS, INC. RESERVE COPYRIGHT & OTHER RIGHTS RESTRICTING THESE DOCUMENTS TO THE ORIGINAL SITE OR PURPOSE FOR WHICH THEY WERE PREPARED. REPRODUCTIONS, CHANGES OR ASSIGNMENTS ARE PROHIBITED.