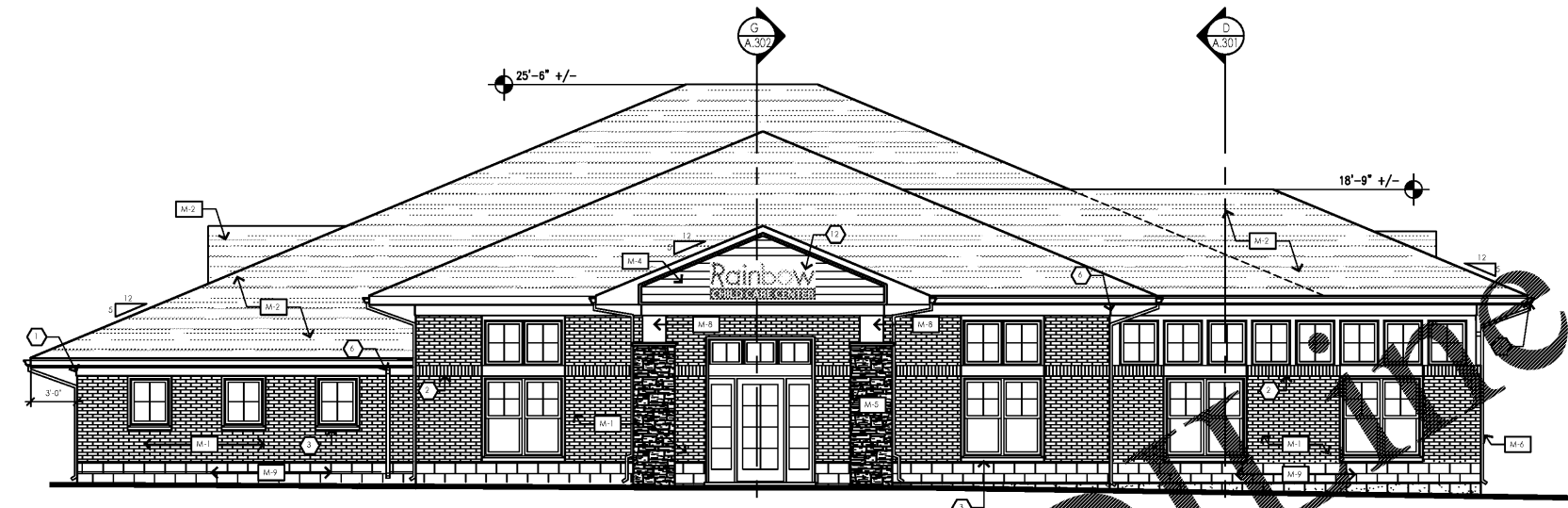


SEAL:
 THIS DOCUMENT IS NOT FOR CONSTRUCTION
 UNLESS THE ARCHITECT OR ENGINEER'S
 SIGNATURE AND SEAL APPEAR BELOW.

NOT FOR
 CONSTRUCTION

BID SET
 04-10-18



1 FRONT (NORTH) ELEVATION 3/16" = 1'-0"

Exterior Elevation Materials					
SYMBOL	ITEM	MANUFACTURER	MODEL	COLOR / FINISH	NOTES
M-1	BRICK	BRAMPTON BRICK	CROSSROADS SERIES	COLOR - JASPER	IF BRICK IS NOT READILY AVAILABLE PROVIDE OPTIONS FOR OWNER TO APPROVE.
M-2	ASPHALT SHINGLES	GAF ROOFING	TIMBERLINE HD - LIFETIME SHINGLES	COLOR - WEATHERED WOOD	-
M-3	BREAK METAL TRIM	QUALITY EDGE	TRULINE EMBOSSED TRIM COIL	COLOR - 807 (CLAY)	-
M-4	VINYL SIDING	CERTANTEED CORPORATION	DOUBLE 5' CLAPBOARD	MIST	-
M-5	STONE VENEER	-	-	-	VER. W/ OWNER FOR MANUFACTURER, MODEL, AND COLOR.
M-6	PREF-FIN ALUMINUM GUTTER	MASTIC HOME EXTERIORS	6" GUTTER COIL - 27 GAUGE	COLOR - PERLESTONE CLAY (VERIFY W/ OWNER)	-
M-7	SILLS	I.B.D.	LIMESTONE	VARIEGATED	-
M-8	CEDAR TRIM BOARD	-	CEDAR	NATURAL & SEALED	-
M-9	SPLITFACE C.M.U.	MICHIGAN CERTIFIED CONCRETE	SPLIT FACED	VAOLS	IF BLOCK IS NOT READILY AVAILABLE PROVIDE OPTIONS FOR OWNER TO APPROVE.

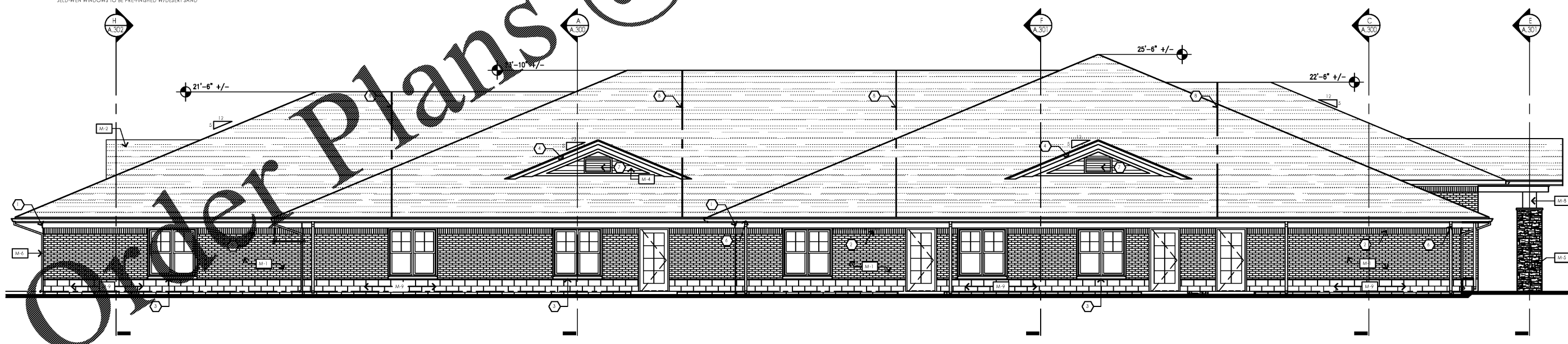
Keyed Elevation Notes:

- TYPICAL EAVE - SEE DETAIL FOR MORE INFORMATION
- BRICK SOLDIER COURSE (TYP)
- SILL SLOPED TO ALLOW WATER RUNOFF WITH DRIP EDGE
- 1X2 TRIM BRD. ON 1X6 RAKE BRD. ON 1X6 SUB-RAKE BRD. WITH PRE-FINISHED ALUMINUM WRAP
- 1/2" AZTEK PANEL (PAINT)
- PRE-FINISHED ALUMINUM GUTTER AND DOWNSPOUT - VERIFY CONNECTION DETAIL AND LOCATION WITH CIVIL ENGINEER
- PROVIDE LOUVERED DORMERS FOR MECHANICAL INTAKE (VER. W/ MECH. DRAWINGS)
- LINE OF DRAFT STOPPING
- LINE OF BUILDING BEYOND
- CONDENSING UNIT, SEE MECH. DRAWINGS FOR UNIT LOCATIONS
- 60MIL EPDM FLASHING FULLY ADHERED
- 12" UNFINISHED 8 1/2" X 32" SIGN TO BE PERMITTED UNDER SEPARATE SUBMITTAL BY SIGN VENDOR

General Elevation Notes:

- ALL TRIM BOARDS (I.N.D.) WILL BE CLAD IN PRE-FIN ALUM. - DETERMINE GAUGE PER RAISE CHILD CENTER SPECS.
- EXTERIOR BRICK IS TO BE STANDARD 5" COURSE OUT QUIN CORNER
- EXTERIOR WINDOWS TO BE DOWN. THE GLASS OPERABLE AND HAVE SCREENS TO BE 16" HIGH
- DO NOT PROVIDE FINISHING REFERENCE SECTIONS & DETAILS UNLESS SPECIFIED IN CONSTRUCTION DOCUMENTS A-2 - A-300
- SIGNAGE TO BE INSTALLED PER I.C. AS DIRECTED BY OWNER

NOTE:
 ZELD-WEN WINDOWS TO BE PRE-FINISHED W/DESERT SAND



2 LEFT (EAST) ELEVATION 3/16" = 1'-0"

NO. DATE REMARKS
 REVISIONS



RAINBOW CHILD CARE CENTER
 C - PROTOTYPE
 2609 W. LAKE MARY BLVD.
 LAKE MARY, FL 32746

PROJECT NO: 2017.0250
 DATE: 12.22.17

A.200
 EXTERIOR ELEVATIONS

CHECKED: RC DRAWN: JC

INTERPLAN, LLC. RESERVE COPYRIGHTS & OTHER RIGHTS RESTRICTING THESE DOCUMENTS TO THE ORIGINAL SITE OR PURPOSE FOR WHICH THEY WERE PREPARED. REPRODUCTIONS, CHANGES OR ASSIGNMENTS ARE PROHIBITED.