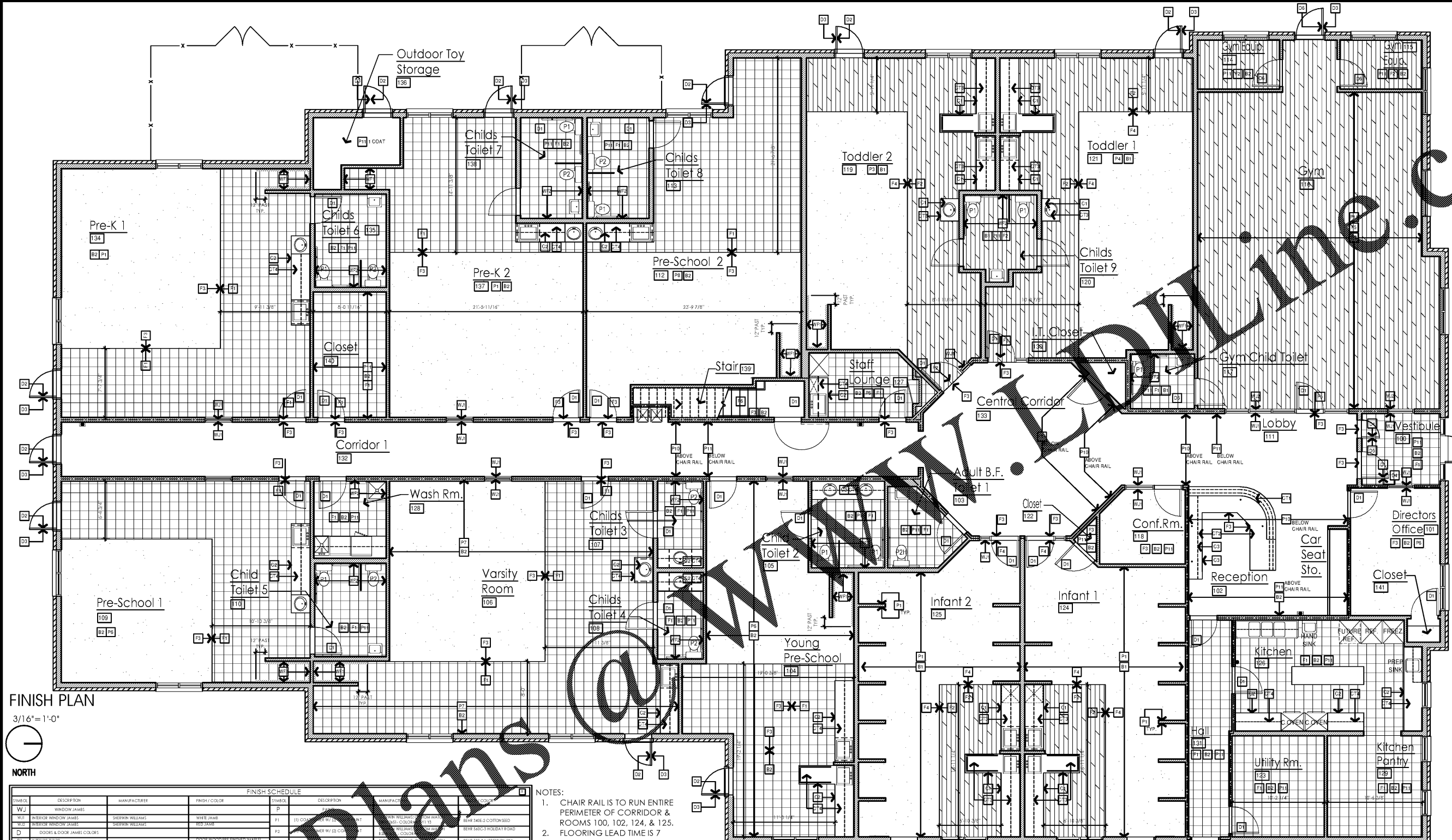


SEAL:
THIS DOCUMENT IS NOT FOR CONSTRUCTION
UNLESS THE ARCHITECT OR ENGINEER'S
SIGNATURE AND SEAL APPEAR BELOW.

NOT FOR
CONSTRUCTION

BID SET
04-10-18



FINISH PLAN

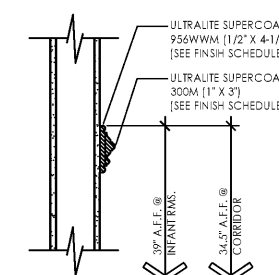
3/16" = 1'-0"



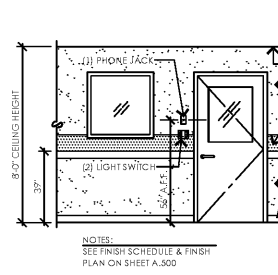
SYMBOL	DESCRIPTION	MANUFACTURER	FINISH / COLOR	SYMBOL	DESCRIPTION	MANUFACTURER	FINISH / COLOR
WJ	WINDOW JAMBES	SHERRIN WILLIAMS	WHITE JAMB	F1	(1) COATPRIMER W/ (2) COATS PAINT	SHERRIN WILLIAMS	ULTRAULTE SUPERCOAT MOLDING 956WMM (1/2" X 4-1/4") (SEE FINISH SCHEDULE - PP)
W2	INTERIOR WINDOW JAMBES	SHERRIN WILLIAMS	WHITE JAMB	F2	(1) COATPRIMER W/ (2) COATS PAINT	SHERRIN WILLIAMS	ULTRAULTE SUPERCOAT MOLDING 300M (1" X 3") (SEE FINISH SCHEDULE - PP)
D	DOORS & DOOR JAMBES COLORS	SHERRIN WILLIAMS	W/ (2) CO. CO. COLOR	F3	(1) COATPRIMER W/ (2) COATS PAINT	SHERRIN WILLIAMS	ULTRAULTE SUPERCOAT MOLDING 300M (1" X 3") (SEE FINISH SCHEDULE - PP)
B1	INTERIOR DOOR	SHERRIN WILLIAMS	DOOR JAMB - WHITE BRASS	F4	(1) COATPRIMER W/ (2) COATS PAINT	SHERRIN WILLIAMS	ULTRAULTE SUPERCOAT MOLDING 300M (1" X 3") (SEE FINISH SCHEDULE - PP)
B2	EXTERIOR DOOR	SHERRIN WILLIAMS	DOOR JAMB - WHITE BRASS	F5	(1) COATPRIMER W/ (2) COATS PAINT	SHERRIN WILLIAMS	ULTRAULTE SUPERCOAT MOLDING 300M (1" X 3") (SEE FINISH SCHEDULE - PP)
B3	EXTERIOR DOOR	SHERRIN WILLIAMS	DOOR JAMB - BLUE BRASS	F6	(1) COATPRIMER W/ (2) COATS PAINT	SHERRIN WILLIAMS	ULTRAULTE SUPERCOAT MOLDING 300M (1" X 3") (SEE FINISH SCHEDULE - PP)
B4	EXTERIOR DOOR	SHERRIN WILLIAMS	DOOR JAMB - RED BRASS	F7	(1) COATPRIMER W/ (2) COATS PAINT	SHERRIN WILLIAMS	ULTRAULTE SUPERCOAT MOLDING 300M (1" X 3") (SEE FINISH SCHEDULE - PP)
F	FLOORING	SHERRIN WILLIAMS	DOOR JAMB - RED BRASS	F8	(1) COATPRIMER W/ (2) COATS PAINT	SHERRIN WILLIAMS	ULTRAULTE SUPERCOAT MOLDING 300M (1" X 3") (SEE FINISH SCHEDULE - PP)
F1	V.C.T.	AMIRBOND	DOOR JAMB - RED BRASS	F9	(1) COATPRIMER W/ (2) COATS PAINT	SHERRIN WILLIAMS	ULTRAULTE SUPERCOAT MOLDING 300M (1" X 3") (SEE FINISH SCHEDULE - PP)
F2	SHEET VINYL (INSTALLED BY GC)	TOU	DOOR JAMB - RED BRASS	F10	(1) COATPRIMER W/ (2) COATS PAINT	SHERRIN WILLIAMS	ULTRAULTE SUPERCOAT MOLDING 300M (1" X 3") (SEE FINISH SCHEDULE - PP)
F3	CPT (INSTALLED BY GC)	MASLAND	DOOR JAMB - RED BRASS	F11	(1) COATPRIMER W/ (2) COATS PAINT	SHERRIN WILLIAMS	ULTRAULTE SUPERCOAT MOLDING 300M (1" X 3") (SEE FINISH SCHEDULE - PP)
F4	CPT (INSTALLED BY GC)	MASLAND	DOOR JAMB - RED BRASS	F12	(1) COATPRIMER W/ (2) COATS PAINT	SHERRIN WILLIAMS	ULTRAULTE SUPERCOAT MOLDING 300M (1" X 3") (SEE FINISH SCHEDULE - PP)
F5	PADDLED SHEET VINYL (INSTALLED BY GC)	IGARLUX	DOOR JAMB - RED BRASS	F13	(1) COATPRIMER W/ (2) COATS PAINT	SHERRIN WILLIAMS	ULTRAULTE SUPERCOAT MOLDING 300M (1" X 3") (SEE FINISH SCHEDULE - PP)
R	FLOOR PAINT	SHERRIN WILLIAMS	DOOR JAMB - RED BRASS	F14	(1) COATPRIMER W/ (2) COATS PAINT	SHERRIN WILLIAMS	ULTRAULTE SUPERCOAT MOLDING 300M (1" X 3") (SEE FINISH SCHEDULE - PP)
B	BASE	SHERRIN WILLIAMS	DOOR JAMB - RED BRASS	F15	(1) COATPRIMER W/ (2) COATS PAINT	SHERRIN WILLIAMS	ULTRAULTE SUPERCOAT MOLDING 300M (1" X 3") (SEE FINISH SCHEDULE - PP)
B1	VINYL COVERING (INSTALLED BY GC)	SHERRIN WILLIAMS	DOOR JAMB - RED BRASS	F16	(1) COATPRIMER W/ (2) COATS PAINT	SHERRIN WILLIAMS	ULTRAULTE SUPERCOAT MOLDING 300M (1" X 3") (SEE FINISH SCHEDULE - PP)
B2	VINYL COVERING (INSTALLED BY GC)	SHERRIN WILLIAMS	DOOR JAMB - RED BRASS	F17	(1) COATPRIMER W/ (2) COATS PAINT	SHERRIN WILLIAMS	ULTRAULTE SUPERCOAT MOLDING 300M (1" X 3") (SEE FINISH SCHEDULE - PP)
B3	NOT TO SCALE	SHERRIN WILLIAMS	DOOR JAMB - RED BRASS	F18	(1) COATPRIMER W/ (2) COATS PAINT	SHERRIN WILLIAMS	ULTRAULTE SUPERCOAT MOLDING 300M (1" X 3") (SEE FINISH SCHEDULE - PP)
C	CABINET	SHERRIN WILLIAMS	DOOR JAMB - RED BRASS	F19	(1) COATPRIMER W/ (2) COATS PAINT	SHERRIN WILLIAMS	ULTRAULTE SUPERCOAT MOLDING 300M (1" X 3") (SEE FINISH SCHEDULE - PP)
C1	FINISH CABINET	SHERRIN WILLIAMS	DOOR JAMB - RED BRASS	F20	(1) COATPRIMER W/ (2) COATS PAINT	SHERRIN WILLIAMS	ULTRAULTE SUPERCOAT MOLDING 300M (1" X 3") (SEE FINISH SCHEDULE - PP)
C2	FINISH CABINET	SHERRIN WILLIAMS	DOOR JAMB - RED BRASS	F21	(1) COATPRIMER W/ (2) COATS PAINT	SHERRIN WILLIAMS	ULTRAULTE SUPERCOAT MOLDING 300M (1" X 3") (SEE FINISH SCHEDULE - PP)
C3	FINISH CABINET	SHERRIN WILLIAMS	DOOR JAMB - RED BRASS	F22	(1) COATPRIMER W/ (2) COATS PAINT	SHERRIN WILLIAMS	ULTRAULTE SUPERCOAT MOLDING 300M (1" X 3") (SEE FINISH SCHEDULE - PP)
C4	FINISH CABINET	SHERRIN WILLIAMS	DOOR JAMB - RED BRASS	F23	(1) COATPRIMER W/ (2) COATS PAINT	SHERRIN WILLIAMS	ULTRAULTE SUPERCOAT MOLDING 300M (1" X 3") (SEE FINISH SCHEDULE - PP)
C5	FINISH CABINET	SHERRIN WILLIAMS	DOOR JAMB - RED BRASS	F24	(1) COATPRIMER W/ (2) COATS PAINT	SHERRIN WILLIAMS	ULTRAULTE SUPERCOAT MOLDING 300M (1" X 3") (SEE FINISH SCHEDULE - PP)
C6	FINISH CABINET	SHERRIN WILLIAMS	DOOR JAMB - RED BRASS	F25	(1) COATPRIMER W/ (2) COATS PAINT	SHERRIN WILLIAMS	ULTRAULTE SUPERCOAT MOLDING 300M (1" X 3") (SEE FINISH SCHEDULE - PP)
C7	FINISH CABINET	SHERRIN WILLIAMS	DOOR JAMB - RED BRASS	F26	(1) COATPRIMER W/ (2) COATS PAINT	SHERRIN WILLIAMS	ULTRAULTE SUPERCOAT MOLDING 300M (1" X 3") (SEE FINISH SCHEDULE - PP)
C8	FINISH CABINET	SHERRIN WILLIAMS	DOOR JAMB - RED BRASS	F27	(1) COATPRIMER W/ (2) COATS PAINT	SHERRIN WILLIAMS	ULTRAULTE SUPERCOAT MOLDING 300M (1" X 3") (SEE FINISH SCHEDULE - PP)
C9	FINISH CABINET	SHERRIN WILLIAMS	DOOR JAMB - RED BRASS	F28	(1) COATPRIMER W/ (2) COATS PAINT	SHERRIN WILLIAMS	ULTRAULTE SUPERCOAT MOLDING 300M (1" X 3") (SEE FINISH SCHEDULE - PP)
C10	FINISH CABINET	SHERRIN WILLIAMS	DOOR JAMB - RED BRASS	F29	(1) COATPRIMER W/ (2) COATS PAINT	SHERRIN WILLIAMS	ULTRAULTE SUPERCOAT MOLDING 300M (1" X 3") (SEE FINISH SCHEDULE - PP)
C11	FINISH CABINET	SHERRIN WILLIAMS	DOOR JAMB - RED BRASS	F30	(1) COATPRIMER W/ (2) COATS PAINT	SHERRIN WILLIAMS	ULTRAULTE SUPERCOAT MOLDING 300M (1" X 3") (SEE FINISH SCHEDULE - PP)
C12	FINISH CABINET	SHERRIN WILLIAMS	DOOR JAMB - RED BRASS	F31	(1) COATPRIMER W/ (2) COATS PAINT	SHERRIN WILLIAMS	ULTRAULTE SUPERCOAT MOLDING 300M (1" X 3") (SEE FINISH SCHEDULE - PP)
C13	FINISH CABINET	SHERRIN WILLIAMS	DOOR JAMB - RED BRASS	F32	(1) COATPRIMER W/ (2) COATS PAINT	SHERRIN WILLIAMS	ULTRAULTE SUPERCOAT MOLDING 300M (1" X 3") (SEE FINISH SCHEDULE - PP)
C14	FINISH CABINET	SHERRIN WILLIAMS	DOOR JAMB - RED BRASS	F33	(1) COATPRIMER W/ (2) COATS PAINT	SHERRIN WILLIAMS	ULTRAULTE SUPERCOAT MOLDING 300M (1" X 3") (SEE FINISH SCHEDULE - PP)

NOTES:

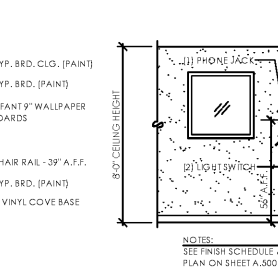
- CHAIR RAIL IS TO RUN ENTIRE PERIMETER OF CORRIDOR & ROOMS 100, 102, 124, & 125. FLOORING LEAD TIME IS 7 WEEKS FROM APPROVED OVER FORM AND TAKE OFF.
- ALL COUNTERTOPS SHALL HAVE RADIUS CORNERS. NO SHARP EDGES SHALL BE PERMITTED.



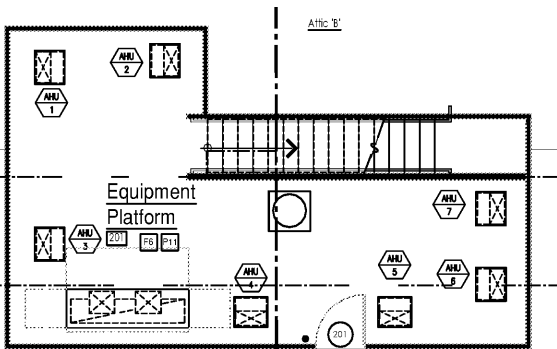
Chair Rail Detail
Scale: 1-1/2" = 1'-0"



Typ. Int. Elev. @ Infant
Scale: 1/4" = 1'-0"



Typ. Int. Elev. @ Classrooms
Scale: 1/4" = 1'-0"



Equipment Platform Finish Plan
Scale: 3/16" = 1'-0"

NO DATE REMARKS
REVISIONS



RAINBOW CHILD CARE CENTER

C - PROTOTYPE
2609 W. LAKE MARY BLVD.
LAKE MARY, FL 32746

PROJECT NO: 2017.0250
DATE: 12.22.17

A.105
FINISH PLAN

CHECKED: RC DRAWN: JC