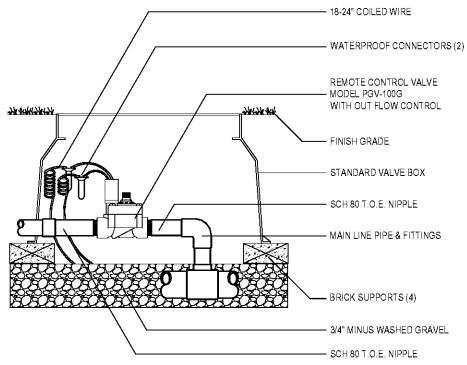
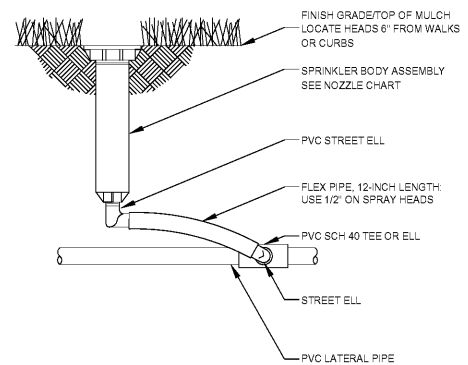


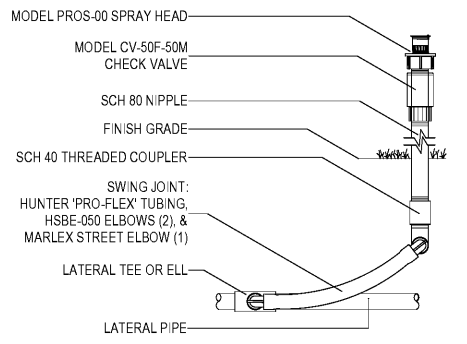
1 I-CORE CONTROLLER DETAIL  
1-500 SCALE: N.T.S.



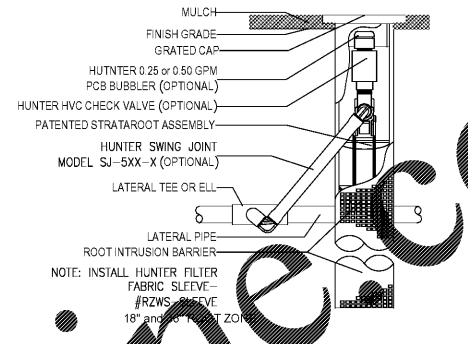
2 ZONE VALVE DETAIL  
1-500 SCALE: N.T.S.



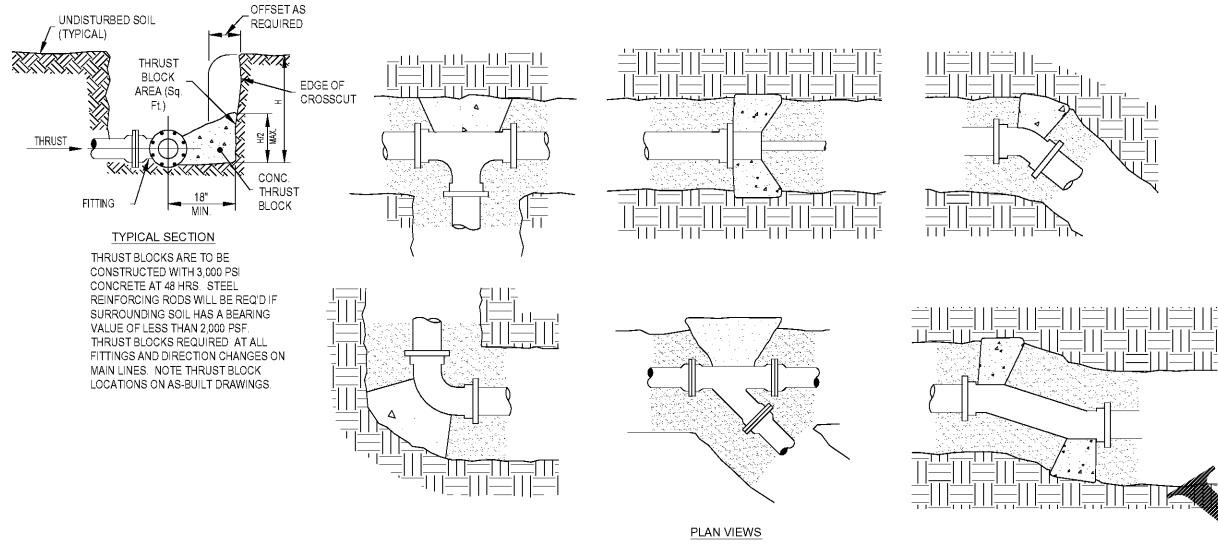
3 POP-UP SPRAY DETAIL  
1-500 SCALE: N.T.S.



4 SPRAY ON RISER DETAIL  
1-500 SCALE: N.T.S.



5 ROOT ZONE WATER SYSTEM  
1-500 SCALE: N.T.S.



6 IRRIGATION THRUSTBLOCK DETAIL  
1-500 SCALE: N.T.S.

SPRAY NOZZLE CHART

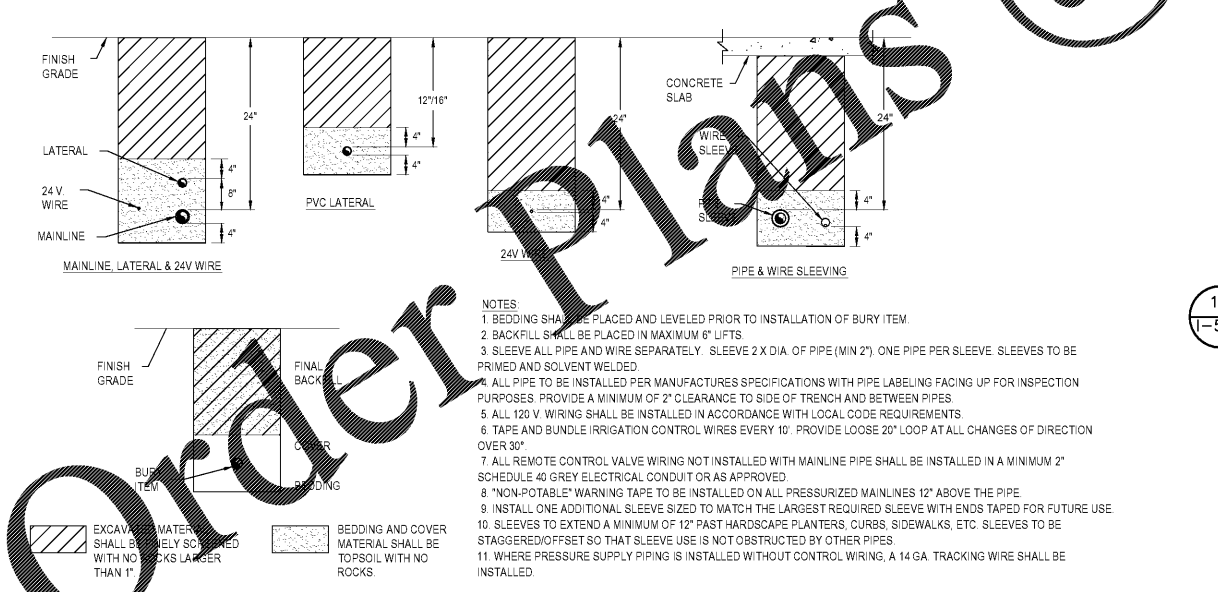
TYPE	SYM	NOZZLE	NOZZLE PATTERN	GPM
MP1000 8'-15' radius	A	MAROON	90° ADJUSTABLE ARC	.21
	B	MAROON	180° ADJUSTABLE ARC	.42
	C	LT. BLUE	210° ADJUSTABLE ARC	.63
	D	LT. BLUE	270° ADJUSTABLE ARC	.63
	E	OLIVE	360° ARC	.84
	F	BLACK	90° ADJUSTABLE ARC	.43
	G	BLACK	180° ADJUSTABLE ARC	.77
	H	GREEN	210° ADJUSTABLE ARC	.86
MP2000 13'-21' radius	I	GREEN	270° ADJUSTABLE ARC	1.10
	J	RED	360° ARC	1.48
	K	BLUE	90° ADJUSTABLE ARC	.86
	L	BLUE	180° ADJUSTABLE ARC	1.82
MP3000 22'-30' radius	M	YELLOW	210° ADJUSTABLE ARC	2.12
	N	YELLOW	270° ADJUSTABLE ARC	2.73
	O	GRAY	360° ARC	3.64
	P	TURQUOISE	45°-105° ADJUSTABLE ARC	.45
MP800 6'-12' radius	AA	ORANGE	90° ADJUSTABLE ARC	.23
	BB	ORANGE	180° ADJUSTABLE ARC	.42
	CC	ORANGE	210° ADJUSTABLE ARC	.43
	DD	GREEN	360° ARC	.78
BUBBLERS AND MICRO-SPRAYS	Q	STRIP	5x15' LEFT STRIP	.22
	R	STRIP	5x15' RIGHT STRIP	.22
	S	STRIP	5x30' SIDE STRIP	.44
	PCN10	BUBBLER	0.50 GPM FLOOD BUBBLER	.50
PCN50	BUBBLER	1.00 GPM FLOOD BUBBLER	1.00	
SR-4Q	SPRAY	90° 4' RADIUS	.22	
SR-4H	SPRAY	180° 4' RADIUS	.44	

7 NOZZLE CHART  
1-500 SCALE: N.T.S.

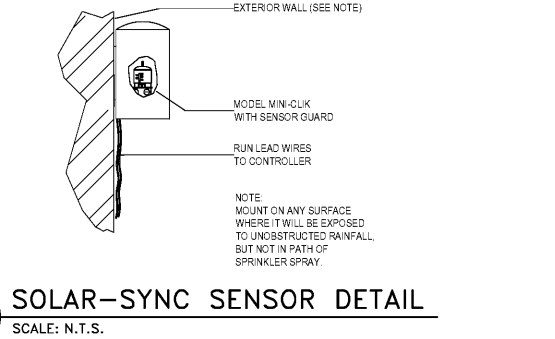
EQUIPMENT LIST

SYMBOL	DESCRIPTION	QUANTITIES
●	12" POP-UP SPRAY - HUNTER INDUSTRIES PRS40 BODY WMP800 NOZZLES	16
○	HUNTER INDUSTRIES RISER CONNECTION WMP1000 NOZZLES	8
○	6" POP-UP SPRAY - HUNTER INDUSTRIES PRS40 BODY WMP1000 NOZZLES	93
●	12" POP-UP SPRAY - HUNTER INDUSTRIES PRS40 BODY WMP1000 NOZZLES	124
○	HUNTER INDUSTRIES RISER CONNECTION WMP1000 NOZZLES	10
○	6" POP-UP SPRAY - HUNTER INDUSTRIES PRS40 BODY WMP2000 NOZZLES	0
⊗	HUNTER 'CV' SERIES ELECTRIC VALVE WITH ACCU-SET PRESSURE REGULATOR 2"	2
⊙	HUNTER I-CORE-12 STATION CONTROLLER, 120VAC INSTALL WITH A BY-PASS BOX AND GROUND WITH AN 8 COPPER CLAD ROD	1
⊕	HUNTER SOLAR-SYNC SENSOR	1
⊞	2" REUSE IRRIGATION METER TO PROVIDE 80 GPM AT 40 PSI	1 (BY OWNER)
⊘	2" GATE VALVE	1
---	LATERAL LINE - SCH 40 PVC - SIZE PER PLAN	SEE PLAN
---	2" MAINLINE - SCH 40 PVC SIZE PER PLAN	SEE PLAN
---	SLEEVING - SCH. 40 PVC MIN. DEPTH OF 24"	SEE PLAN

8 EQUIPMENT LIST  
1-500 SCALE: N.T.S.



9 IRRIGATION TRENCHING DETAIL  
1-500 SCALE: N.T.S.



10 SOLAR-SYNC SENSOR DETAIL  
1-500 SCALE: N.T.S.

IRRIGATION NOTES

- REFER TO THE LANDSCAPE PLANS WHEN TRENCHING TO AVOID TREES AND SHRUBS.
- ALL MAINLINE PIPING SHALL BE BURIED TO A MINIMUM DEPTH OF 18" OF COVER. ALL LATERAL PIPING SHALL BE BURIED TO A MINIMUM DEPTH OF 12" OF COVER.
- ALL POP-UP ROTORS AND SPRAY HEADS SHALL BE INSTALLED USING AN 18" P.V.C. FLEX PIPE CONNECTION. DO NOT USE FUNNY PIPE.
- ADJUST ALL NOZZLES TO REDUCE WATER WASTE ON HARD SURFACES AND BUILDING WALLS.
- THROTTLE ALL VALVES ON SHRUB LINES AS REQUIRED TO PREVENT FOGGING.
- RISERS SHALL BE STAKED WITH METAL ANGLE IRON AND PAINT ALL ABOVE GROUND PORTIONS OF PIPE AND ANGLE IRON BROWN/BLACK IN COLOR.
- ALL CONTROL WIRE SPLICES SHALL BE MADE IN VALVE BOXES USING SNAP-TITE CONNECTORS AND SEALANT.
- THE CONTRACTOR SHALL PREPARE AN AS-BUILT DRAWING ON A REPRODUCIBLE PAPER (SEPIA OR MYLAR) SHOWING ALL INSTALLED IRRIGATION. A MYLAR OR SEPIA OF THE ORIGINAL PLAN MAY BE OBTAINED FROM THE LANDSCAPE ARCHITECT FOR A FEE. THE DRAWING SHALL LOCATE ALL MAINLINE AND VALVES BY SHOWING EXACT MEASUREMENTS FROM HARD SURFACES.
- ALL VALVES, GATE VALVES AND QUICK COUPLERS SHALL BE INSTALLED IN VALVE BOXES.
- ANY PIPING SHOWN OUTSIDE THE PROPERTY LINE OR RUNNING OUTSIDE A LANDSCAPE AREA IS SHOWN THERE FOR CLARITY ONLY. ALL LINES SHALL BE INSTALLED ON THE PROPERTY AND INSIDE THE LANDSCAPE AREAS.
- THE EXACT HEIGHT OF ANY 12" POP-UP THAT IS SHOWN IN A SHRUB BED SHALL BE DETERMINED BY THE LANDSCAPE ARCHITECT IN THE FIELD.
- THE CONTRACTOR SHALL EXERCISE CARE SO AS NOT TO DAMAGE ANY EXISTING UTILITIES. THE CONTRACTOR SHALL BE RESPONSIBLE FOR THE IMMEDIATE REPAIRS AND COST OF ANY DAMAGE CAUSED BY HIS WORK.
- ALL WORK SHALL BE GUARANTEED FOR ONE YEAR FROM THE DATE OF FINAL ACCEPTANCE AGAINST ALL DEFECTS IN EQUIPMENT AND WORKMANSHIP.
- CONTRACTOR TO USE MIN. OF 12 GAUGE WIRE FOR ALL COMMON WIRES AND 14 GAUGE WIRE FOR ALL CONTROL WIRES. CONTRACTOR ALSO TO PROVIDE 3 SPARE CONTROL WIRES FOR ANY FUTURE USE.
- CONCRETE THRUST BLOCKS ARE TO BE UTILIZED AT ALL MAINLINE DIRECTION CHANGES.
- ALL IRRIGATION SHOWN ON PLANS IS SCHEMATIC AND DOES NOT REFLECT ALL FITTINGS AND APPURTENANCES WHICH SHALL BE INCLUDED TO PROVIDE A FULLY FUNCTIONAL IRRIGATION SYSTEM CAPABLE OF PROVIDING 100 PERCENT COVERAGE WITH A 50 PERCENT OVERLAP.

11 IRRIGATION NOTES  
1-500 SCALE: N.T.S.

RAINBOW RASCALS DAY CARE

DRAWING TITLE

CONSULTANTS

IRRIGATION DETAILS

PROJECT ADDRESS  
LAKE MARY BLVD  
LAKE MARY, FLORIDA

OWNER NAME AND ADDRESS

PROJECT NO. 17112

DATE 06/01/17

DESCRIPTION DOCUMENTS

REV. 1

OWNER COMMENTS 06/01/17

CITY COMMENTS 06/21/17

SCALE AS NOTED

FILE NAME 17112

DRAWN BY A.L.P.

CHECKED BY C.D.R.

DATE 07/17/17

SIGNATURE AND DATED SEAL

BORRELLI PARTNERS  
ARCHITECTURE PLANNING LANDSCAPE INTERIOR  
7500 W. LAS OLAS BLVD  
ORLANDO, FL 32835 (407) 418-1338  
CONTRACTOR: THE CONTRACTOR SHALL BE RESPONSIBLE FOR THE IMMEDIATE REPAIRS AND COST OF ANY DAMAGE CAUSED BY HIS WORK.  
THIS DRAWING IS THE PROPERTY OF BORRELLI PARTNERS AND IS TO BE USED ONLY FOR THE PROJECT AND SITE SPECIFICALLY IDENTIFIED HEREON.  
IF ANY MATERIAL IS REPRODUCED OR TRANSMITTED IN ANY FORM OR BY ANY MEANS, WITHOUT THE WRITTEN PERMISSION OF BORRELLI PARTNERS, IT IS PROHIBITED.  
CHRISTOPHER D. RICE 1/6/66712

1-500