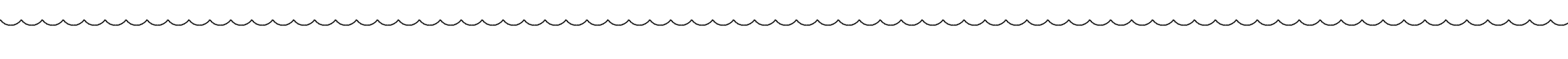
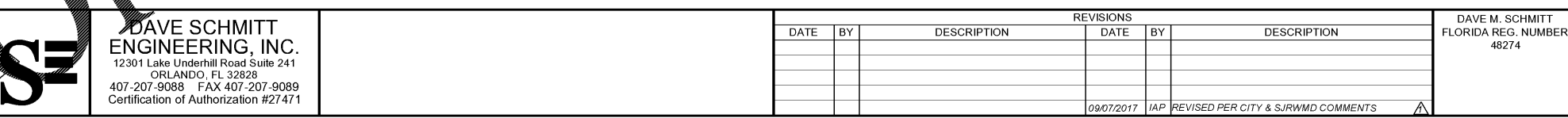
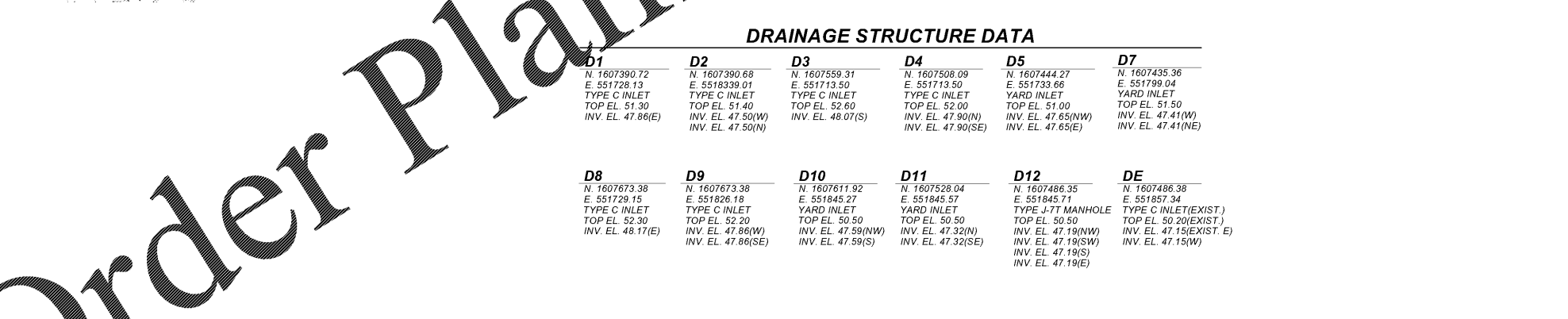
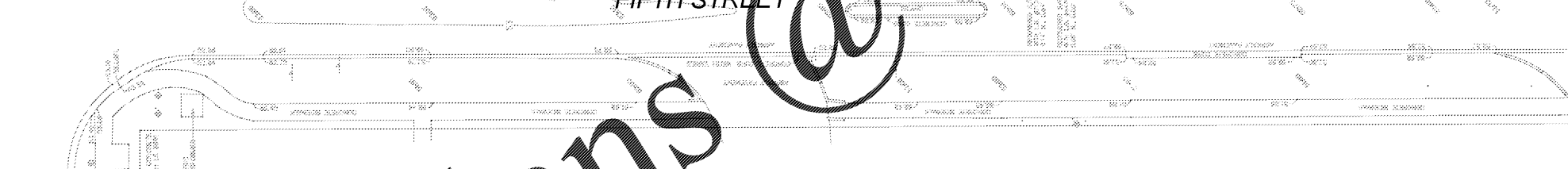
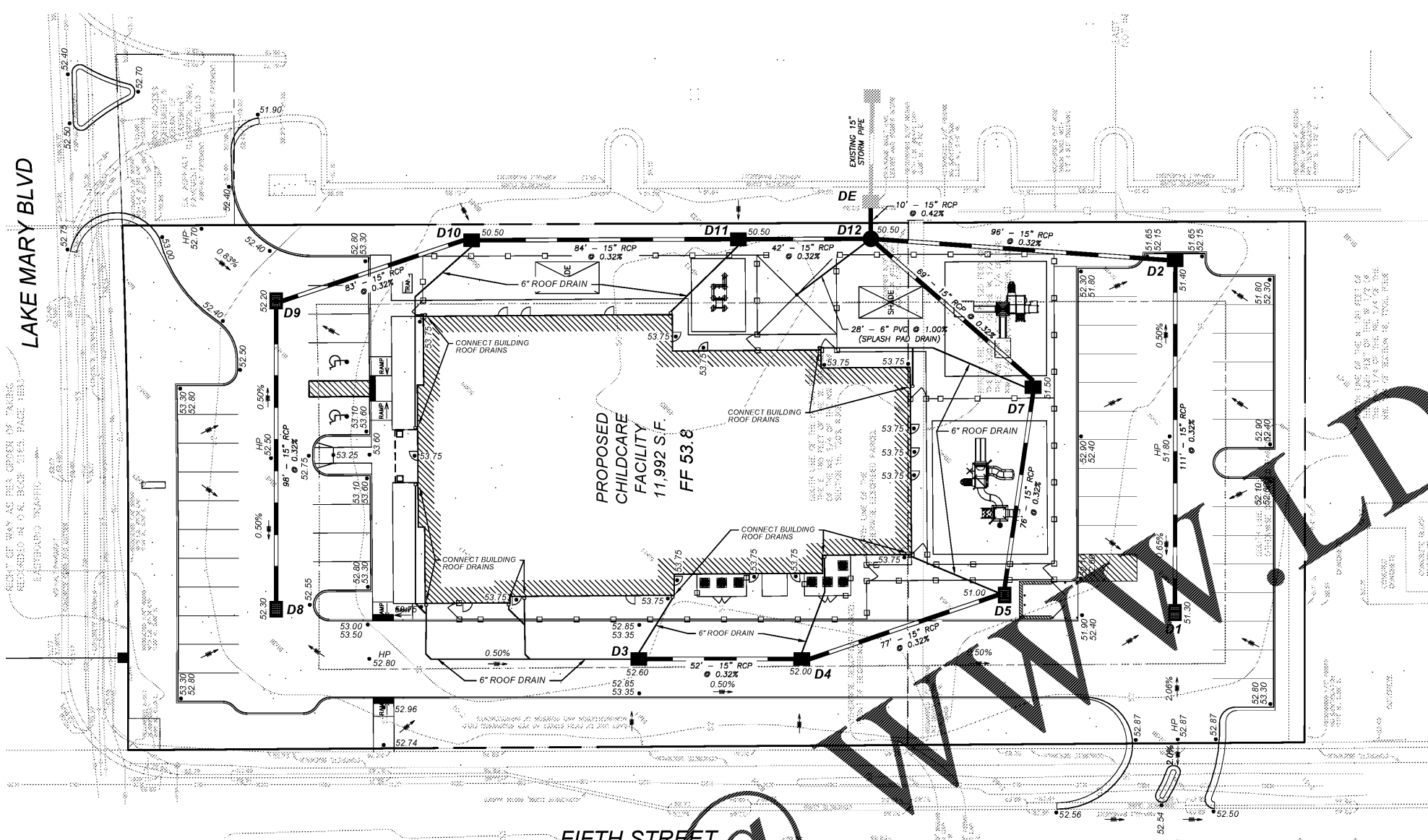


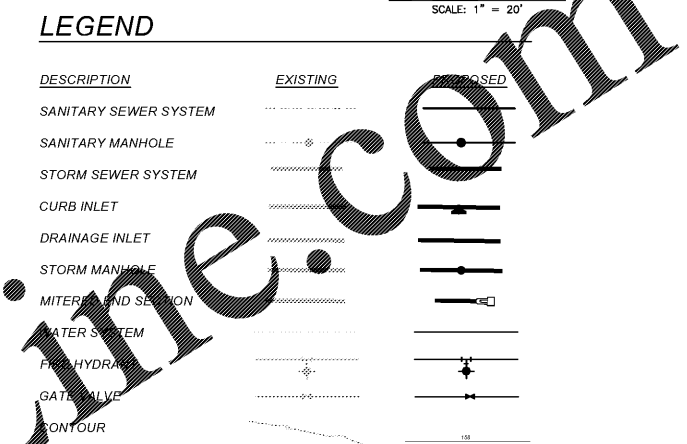
LAKE MARY BLVD



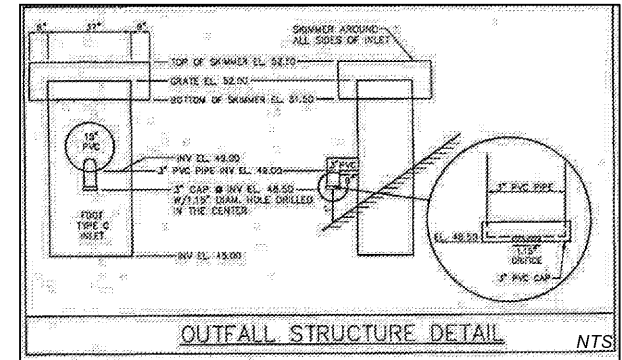
Order Plans

**DRAINAGE STRUCTURE DATA**

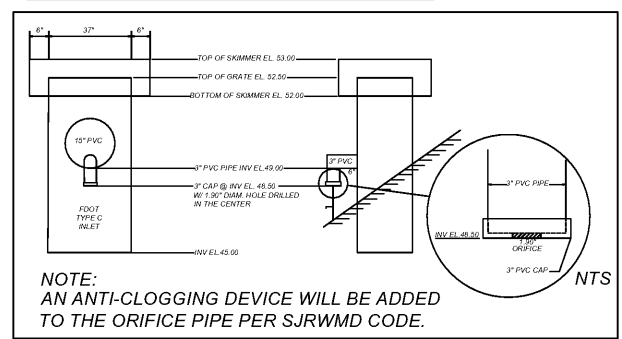
D1	D2	D3	D4	D5	D7
N. 1607390.72 E. 551728.13 TYPE C INLET TOP EL. 51.30 INV. EL. 47.86(E)	N. 1607390.68 E. 5518339.01 TYPE C INLET TOP EL. 51.40 INV. EL. 47.50(W) INV. EL. 47.50(N)	N. 1607559.31 E. 551713.50 TYPE C INLET TOP EL. 52.60 INV. EL. 48.07(S)	N. 1607508.09 E. 551713.50 TYPE C INLET TOP EL. 52.00 INV. EL. 47.90(N) INV. EL. 47.90(SE)	N. 1607444.27 E. 551733.66 YARD INLET TOP EL. 51.00 INV. EL. 47.65(NW) INV. EL. 47.65(E)	N. 1607435.36 E. 551799.04 YARD INLET TOP EL. 51.50 INV. EL. 47.41(N) INV. EL. 47.41(NE)
D8	D9	D10	D11	D12	DE
N. 1607673.38 E. 551729.15 TYPE C INLET TOP EL. 52.30 INV. EL. 48.17(E)	N. 1607673.38 E. 551826.18 TYPE C INLET TOP EL. 52.20 INV. EL. 47.86(W) INV. EL. 47.86(SE)	N. 1607611.92 E. 551845.27 YARD INLET TOP EL. 50.50 INV. EL. 47.59(NW) INV. EL. 47.59(S)	N. 1607528.04 E. 551845.57 YARD INLET TOP EL. 50.50 INV. EL. 47.32(N) INV. EL. 47.32(SE)	N. 1607486.35 E. 551845.71 TYPE J 17" MANHOLE TOP EL. 50.50 INV. EL. 47.19(NW) INV. EL. 47.19(SW) INV. EL. 47.19(S) INV. EL. 47.19(E)	N. 1607486.38 E. 551857.34 TYPE C INLET (EXIST.) TOP EL. 50.20 (EXIST.) INV. EL. 47.15 (EXIST.) INV. EL. 47.15 (W)



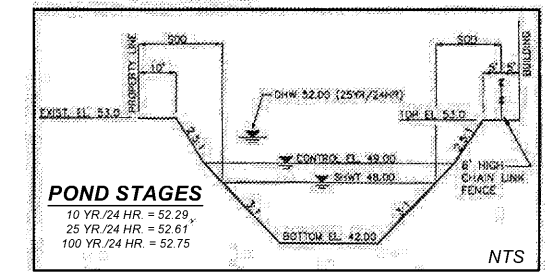
**EXISTING OUTFALL STRUCTURE DETAIL**



**PROPOSED IMPROVEMENTS TO OUTFALL STRUCTURE DETAIL**



**EXISTING POND SECTION**



**DAVE SCHMITT ENGINEERING, INC.**  
12301 Lake Underhill Road Suite 241  
ORLANDO, FL 32828  
407-207-9088 FAX 407-207-9089  
Certification of Authorization #27471

REVISIONS					
DATE	BY	DESCRIPTION	DATE	BY	DESCRIPTION
09/07/2017	IAP	REVISED PER CITY & SJRWMD COMMENTS			

DAVE M. SCHMITT  
FLORIDA REG. NUMBER  
48274

**GRADING & DRAINAGE PLAN**  
RAINBOW CHILD CARE CENTER  
LAKE MARY, FLORIDA

DATE: JULY 2017  
PROJECT NO.: OE-1  
DRAWN BY: ARMZ  
CHECKED BY: DSE  
SCALE: 1"=20'  
SHEET: 8 OF 13

FILE: C:\CAD\Projects\Rainbow Child Care\Grading & Drainage\PLAN-711.dwg, 9/29/2017 5:17:43 PM