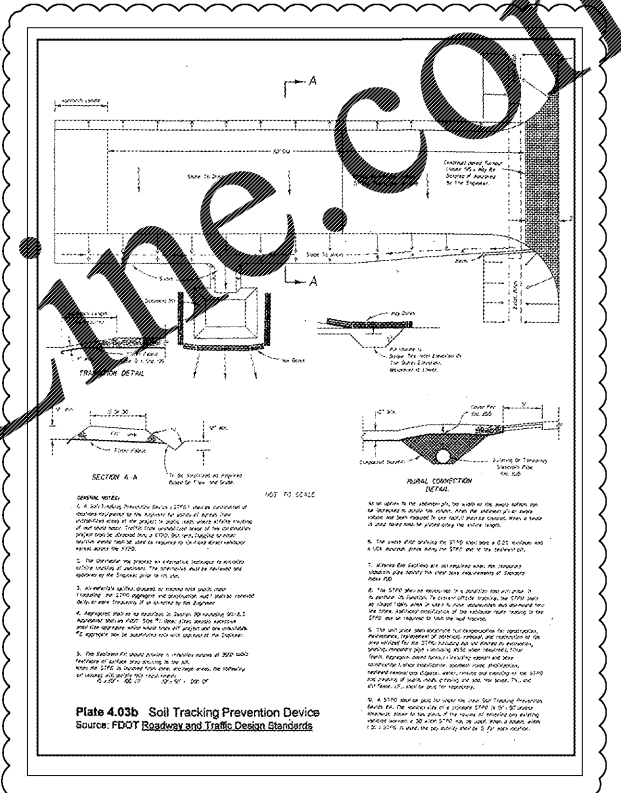
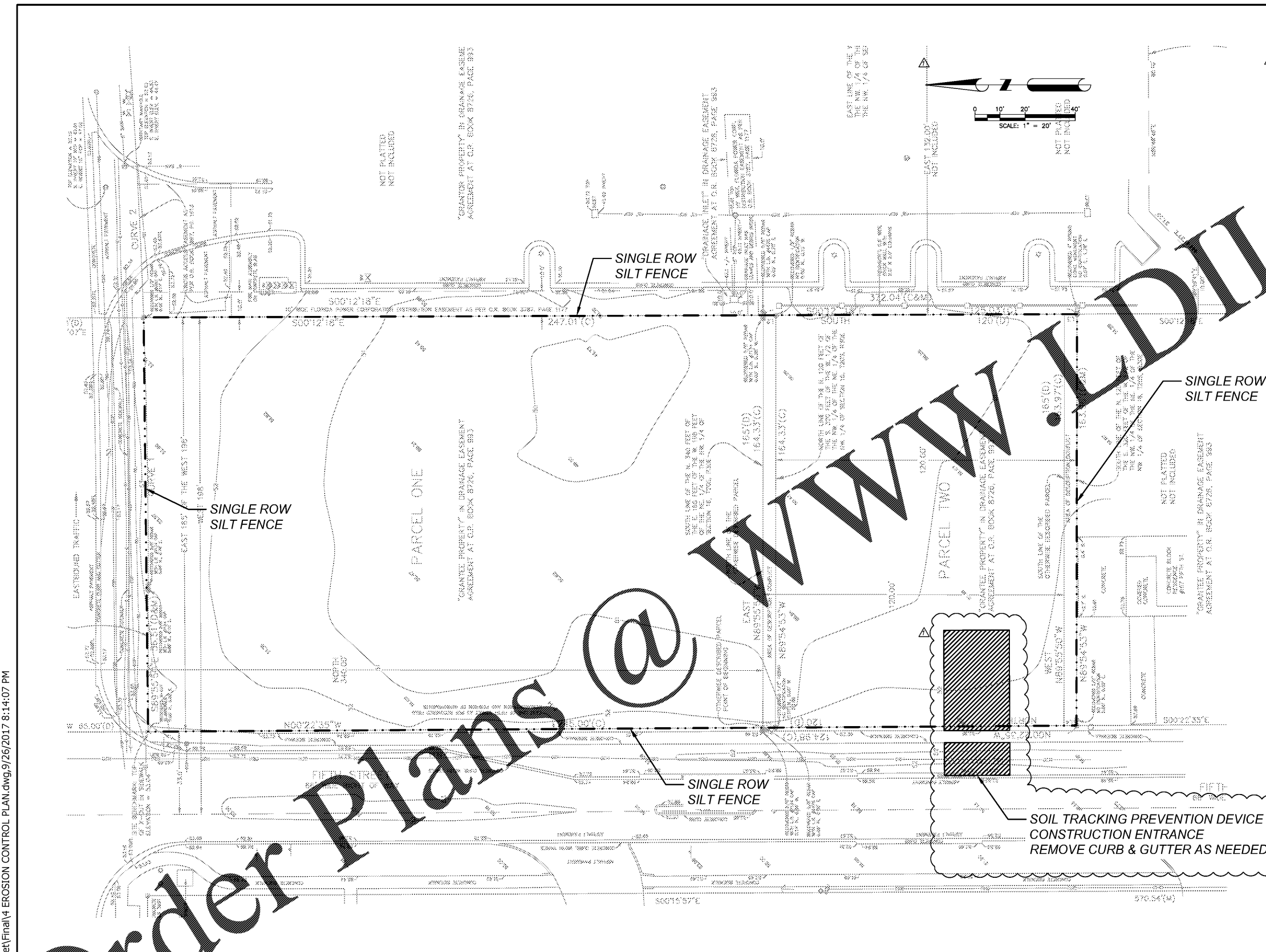
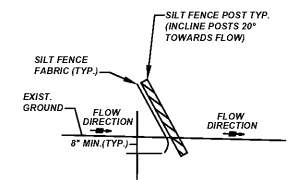


www.ldline.com



LEGEND

DESCRIPTION	PROPOSED
SINGLE ROW SILT FENCE	



FDOT APPROVED TEMPORARY SILT FENCE PRE-ASSEMBLED IN 100' ROLLS UTILIZING 2" X 2" X 4" WOODEN POSTS @ 8' C/C MAX. W/ 6" WOVEN GEOTEXTILE MATERIAL MEETING THE REQUIREMENTS OF SEC. 885-6, SIMILAR & EQUAL TO THAT SUPPLIED BY R/PEPIPE CO. OF TAMPA FLA.

- NOTES:
- CONTRACTOR IS RESPONSIBLE FOR MAINTENANCE AS FOLLOWS:
 1. SILT FENCES SHALL BE INSPECTED IMMEDIATELY AFTER EACH RAINFALL AND AT LEAST DAILY DURING PROLONGED RAINFALL. ANY REQUIRED REPAIRS SHALL BE MADE IMMEDIATELY.
 2. SHOULD THE FABRIC DECOMPOSE OR BECOME INEFFECTIVE PRIOR TO THE END OF ITS USE, IT SHALL BE REPLACED PROMPTLY.
 3. SEDIMENT DEPOSITS SHALL BE REMOVED AFTER EACH STORM EVENT.
 4. ANY SEDIMENT DEPOSITS LEFT IN PLACE AFTER THE SILT FENCE IS NO LONGER REQUIRED SHALL BE GRESSED TO CONFORM WITH THE FINISHED GRADE, PREPARED AND SEED.

TYPICAL SINGLE ROW SILT FENCE DETAIL
R.T.S.

F:\01\CAD\Plans\Set\Final\4 EROSION CONTROL PLAN.dwg 9/26/2017 8:14:07 PM



DAVE SCHMITT ENGINEERING, INC.
12301 Lake Underhill Road Suit 241
ORLANDO, FL 32828
407-207-9088 FAX 407-207-9089
Certification of Authorization #27471

REVISIONS					
DATE	BY	DESCRIPTION	DATE	BY	DESCRIPTION
09/07/2017	IAP	REVISED PER CITY & SJRWMD COMMENTS			

DAVE M. SCHMITT
FLORIDA REG. NUMBER
48274

EROSION CONTROL PLAN
RAINBOW CHILD CARE CENTER
LAKE MARY, FLORIDA

DATE: JULY 2017
PROJECT NO.: OE-1
DRAWN BY: ARMZ
CHECKED BY: DMS
SCALE: 1"=20'
SHEET: 4 OF 13