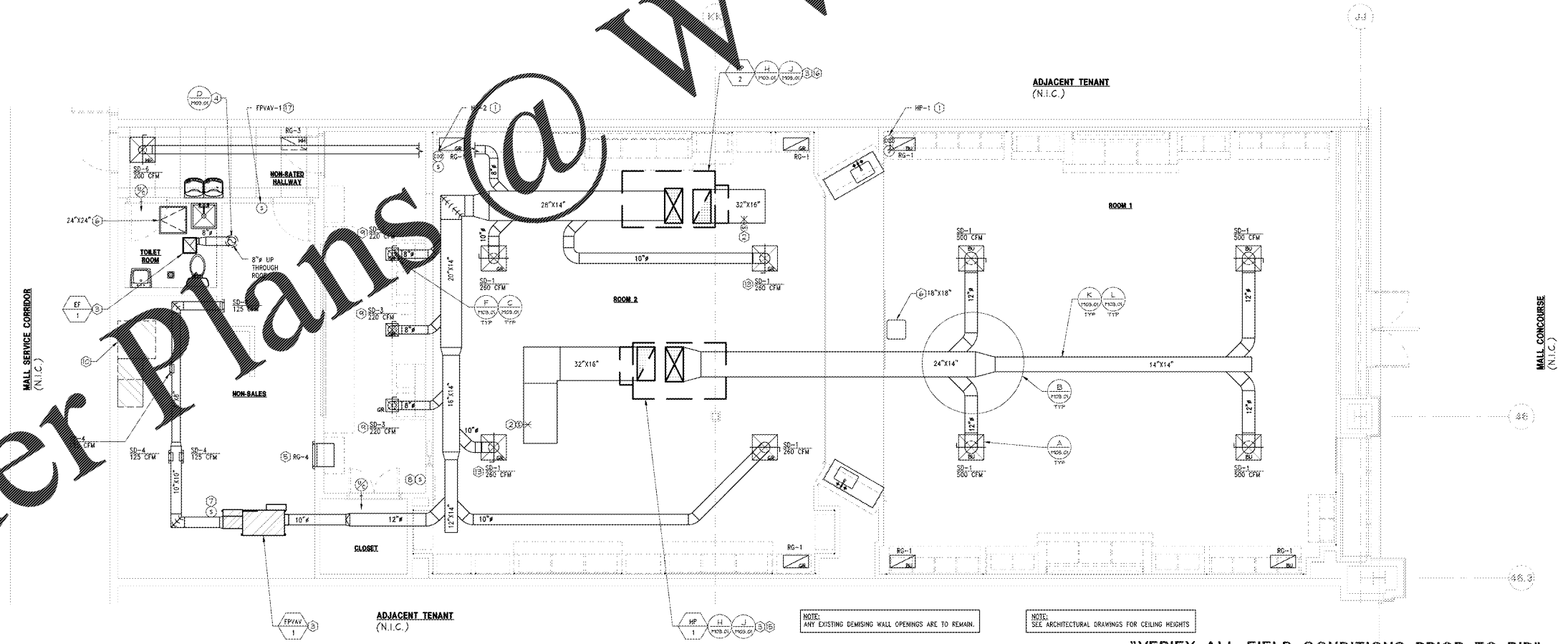


- 1 SENSOR SHALL BE INSTALLED AT 52" AFF. AND NO MORE THAN 18" MAX FROM CORNER. USE STAND ALONE CO₂ SENSOR MODEL #5EN1092, AND ACI BULLET SENSOR MODEL #ST-BP24 FLUSH MOUNT, PAINTED TO MATCH ADJACENT FINISHES. SEE SHEET M04.01 FOR RESPONSIBILITY SCHEDULE AND E04.02 FOR MOUNTING DETAILS OF SALES FLOOR LOCATIONS.
- 2 INSTALL RETURN AIR SMOKE DETECTOR IN DUCT. INTERLOCK TO SHUT DOWN UNIT ON SIGNAL FROM FIRE ALARM SYSTEM. SEE SHEET M04.01 FOR RESPONSIBILITY SCHEDULE.
- 3 TENANT CONTRACTOR SHALL FIELD VERIFY EXACT LOCATION OF ALL HVAC EQUIPMENT. COORDINATE WITH LANDLORD ENGINEER PRIOR TO BID AND CONSTRUCTION.
- 4 EXTEND EXHAUST DUCT UP THROUGH ROOF. PROVIDE A ROOF JACK, STORM COLLAR, AND ALL-WEATHER CAP.
- 5 INSTALL GRILLE ABOVE THE CEILING OF THE SALES SPACE. APPROX. 12"-6" AFF TO BOTTOM OF GRILLE.
- 6 ACCESS PANEL BY GC IN THIS LOCATION FOR ACCESS TO EQUIPMENT ABOVE CEILING. REFER TO ARCHITECTURAL PLANS.
- 7 INSTALL SUPPLY AIR TEMPERATURE SENSOR IN DUCT. SEE SHEET M04.01 FOR RESPONSIBILITY SCHEDULE.
- 8 INSTALL MONITORING SENSOR AT 48" AFF. SEE SHEET M04.01 FOR RESPONSIBILITY SCHEDULE.
- 9 PROVIDE YOUNG REGULATOR CABLE CONTROLLED BALANCING DAMPER, BOWDEN CABLE CONTROL KIT, CONTROL WIRE AND CASING, OR LSQAC APPROVED EQUAL. INSTALL CABLE CONTROLLER IN CEILING NEAR DIFFUSER. IN ACCORDANCE WITH MANUFACTURER'S RECOMMENDATIONS, OR OTHER APPROVED LOCATION. TYPICAL OF ALL INACCESSIBLE MANUAL VOLUME DAMPERS LOCATED ABOVE OVP, BOARD CEILING OR DAMPERS WHICH ARE OTHERWISE INACCESSIBLE. REFERENCE DETAIL #A03.01 FOR ADDITIONAL INFORMATION.
- 10 LOCATION OF ELECTRICAL AND HVAC CONTROL PANELS. DO NOT ROUTE DUCTWORK OR PIPING ABOVE THIS AREA.
- 11 INSTALL HEATING/COOLING-CHANGEOVER-TEMPERATURE-SENSOR-IN-DUCT-SEE-SHEET-M04.01-FOR-RESPONSIBILITY-SCHEDULE.
- 12 DUCTWORK BETWEEN TERMINAL UNIT AND LANDLORD'S DUCTWORK SHALL BE MEDIUM PRESSURE.
- 13 AIR DEVICE TO BE USED FOR ACCESS TO EQUIPMENT LOCATED ABOVE CEILING. THIS CONTRACTOR SHALL BE RESPONSIBLE TO ENSURE THAT A MINIMUM UNOBSTRUCTED FREE AREA OF 3- FEET VERTICALLY AND 4 FEET HORIZONTALLY IN ALL DIRECTIONS AROUND EQUIPMENT IS MAINTAINED TO ALLOW FOR INSTALLATION AND MAINTENANCE OF EQUIPMENT. THIS FREE AREA CAN NOT BE OBTAINED CONTACT THE LSQAC PROJECT MANAGER IMMEDIATELY.
- 14 PROVIDE ELECTRICALLY HEATED AIR CURTAIN UNIT RECESSED ABOVE CEILING. PROVIDE WITH NOZZLE EXTENSION. VERIFY REQUIRED OF LENGTH OF NOZZLE EXTENSION IN FIELD TO CEILING.
- 15 REPLACE EXISTING RTU IN PLACE WITH NEW. PROVIDE NEW ROOF CURB. MODIFY EXISTING ROOF OPENINGS AS REQUIRED AND REFER TO STRUCTURAL DRAWINGS FOR ADDITIONAL INFORMATION.
- 16 REPLACE EXISTING RTU WITH NEW. PROVIDE NEW ROOF CURB. MODIFY/CREATE NEW ROOF OPENINGS AS REQUIRED AND REFER TO STRUCTURAL DRAWINGS FOR ADDITIONAL INFORMATION.
- 17 SENSOR SHALL BE INSTALLED AT 52" AFF. AND NO MORE THAN 18" MAX FROM CORNER. USE THE BULLET SENSOR MODEL #ST-BP24 FLUSH MOUNT, PAINTED TO MATCH ADJACENT FINISHES. SEE SHEET M04.01 FOR RESPONSIBILITY SCHEDULE.

MECHANICAL PLAN KEYNOTES

TBA
Thorson-Baker + Associates
 CONSULTING ENGINEERS
 3030 West Shiloh Road
 Columbus, OH 43230
 (614) 451-6000
 (614) 451-6001 Fax

Lbrands
 STORE DESIGN & CONSTRUCTION
 Three Limited Parkway - Columbus, Ohio 43230
 Telephone: 614.415.7000 - Fax: 614.415.7349



Order Plans @

WWW.LDILINE.COM

PROJECT INFORMATION:
 104.01.2445.01
BATH & BODY WORKS
 CHARLOTTE PREMIUM OUTLETS
 5404 NEW FASHION WAY
 SPACE NO. 240
 CHARLOTTE, NC 28278

REVISIONS:
 OCCURRED BY: 607

ELITE CONSTRUCTION GROUP
 LAKE JACKSON, TN
 PHONE: (615) 238-9111
 NOTE: THESE PRINTS HAVE BEEN
 REVIEWED BY ME/REVIEWER: N.C. 1/18/18
 WILL BE 50 PERCENT OF WHAT IS
 NOTED ON PLANS

DATE ISSUED: 03/13/18
 DESIGNED BY: MAR
 DRAWN BY: TBA
 CHECKED BY: NJK

MECHANICAL PLAN

DRAWING NUMBER:
M02.01

MECHANICAL PLAN

1/4" = 1'-0"

A

03/31/17

"VERIFY ALL FIELD CONDITIONS PRIOR TO BID"



MECHANICAL PLAN