

Order Plans

ELECTRICAL LIGHTING PLAN

"VERIFY ALL FIELD CONDITIONS PRIOR TO BID"

1/4" = 1'-0"

E03.01

- NOTE: REFER TO SHEET E04.01 FOR ELECTRICAL LIGHTING SCHEDULE AND LIGHT DESCRIPTIONS.
- NOTE: REFER TO SHEET E05.01 FOR PANEL SCHEDULE AND LIGHTING ZONE DESIGNATIONS.
- NOTE: LENGTH OF FLEXIBLE METAL CONDUIT, MC TYPE CABLE, OR AC90(CANADA) MAY EXCEED 6'-0" IF ALLOWED BY LANDLORD. REFER TO SPECIFICATIONS.
- NOTE: ELECTRICAL CONTRACTOR SHALL REFER TO ARCHITECTURAL SHEETS FOR MOUNTING HEIGHTS AND INSTALLATION DETAILS FOR SUSPENDED LIGHTING IN NON-SALES AREA.
- NOTE: GENERAL CONTRACTOR SHALL VERIFY CEILING FIRE RATING WITH ARCHITECT, AND BOX OR TENT ALL RECESSED LIGHT FIXTURES, IF REQUIRED, TO MAINTAIN CEILING FIRE RATING.
- NOTE: CIRCUIT NON-SALES EXIT SIGNS AND EMERGENCY BATTERY BACKUP BALLAST TO LOCAL CIRCUIT AHEAD OF ALL SWITCHING.
- NOTE: "NL" DENOTES NIGHTTIME SECURITY LIGHTS.

- ELECTRICAL CONTRACTOR SHALL INSTALL OCCUPANCY MOTION SENSOR SWITCH FOR CONTROL OF LIGHTS AS SHOWN. ELECTRICAL CONTRACTOR SHALL SET SWITCH FOR 15 MINUTES. MOUNT SO THAT BOTTOM OF SWITCH ALIGNS WITH THE TILE AND SIT AT 42" AFF.
- BREAK-OFF-CIRCUIT:
- LIGHT FIXTURES TO BE INSTALLED IN MILLWORK FIXTURE, NOT IN CEILING. VERIFY WITH LS&C. REFER TO SHEET E02.01 FOR POWER REQUIREMENTS.
- PROVIDE VACANCY SENSOR TO AUTOMATICALLY TURN OFF WITHIN 20 MINUTES OF ALL OCCUPANTS LEAVING THE SPACE.
- REFER TO SHEET E02.01 FOR POWER REQUIREMENTS.
- CIRCUIT SALES EXIT, EMERGENCY (EM) AND NIGHTTIME SECURITY LIGHTS (NL) TO CIRCUIT A-1.
- PROVIDE JUNCTION-BOX MOUNTED ON INTERIOR OF STORE, ACCESSIBLE ABOVE CEILING, FOR EXTERIOR BLADE SIGN.
- FURNISH AND INSTALL JUNCTION BOX, TOGGLE DISCONNECT SWITCH IN NON-VISIBLE LOCATION, AND FINAL CONNECTION FOR 120 VOLT SIGN. SIGN IS FURNISHED WITH INTERNAL GROUND FAULT PROTECTION BY SIGN MANUFACTURER PER N.E.C. ARTICLE 600-238. VERIFY EXACT LOCATION OF JUNCTION BOX WITH SIGN MANUFACTURER. PREISE EXISTING JUNCTION BOX AND CONDUIT INTO SPACE IF ALREADY INSTALLED. VERIFY IN FIELD EXACT LOCATION ON CANOPY, FOR CANOPY POWER SEE SHEET A06.01 FOR WALL PENETRATION IN ROUTING CONDUIT.

ELECTRICAL LIGHTING PLAN KEYNOTES

NTS

42N-E0301-000-NOTE

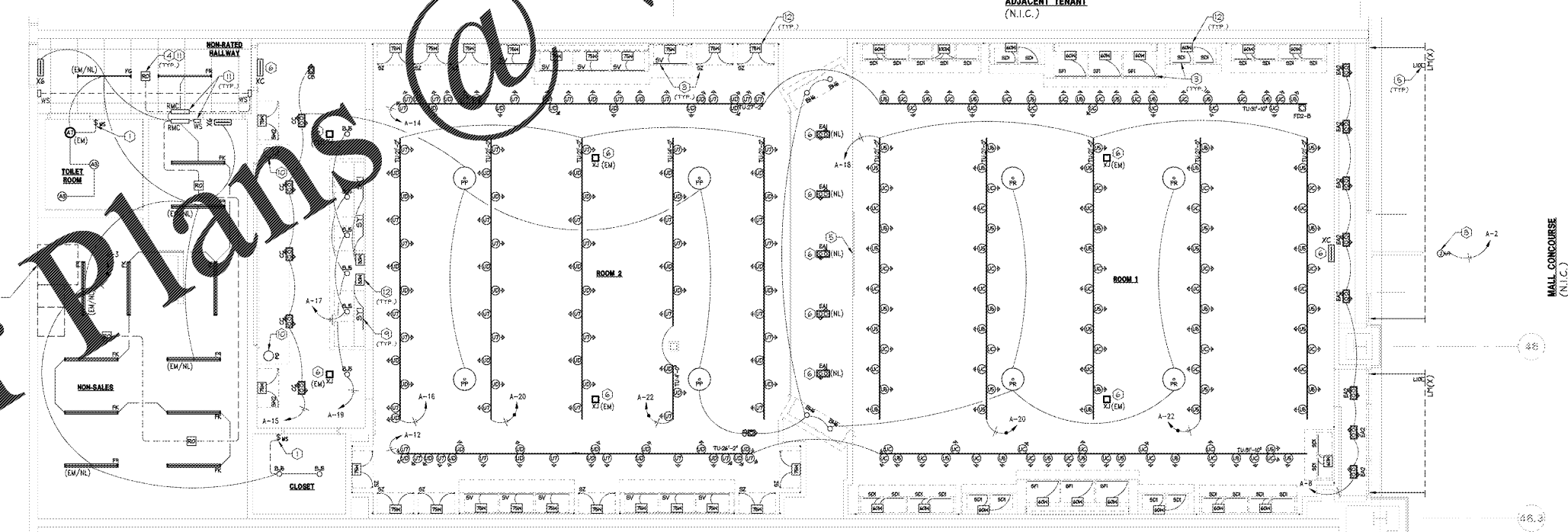
D

**TBA**  
Thorson Baker + Associates  
CONSULTING ENGINEERS

3030 West Shiloh Road  
Rockwell, Ohio 43085

5130 688-8888 FAX  
5130 550-6775 FAX

**Lbrands**  
STORE DESIGN & CONSTRUCTION  
Three Limited Parkway • Columbus, Ohio 43230  
Telephone: 614.415.7000 • Fax: 614.415.7049



PROJECT INFORMATION:  
104.01.2445.01  
BATH & BODY WORKS  
CHARLOTTE PREMIUM OUTLETS  
5404 NEW FASHION WAY  
SPACE NO. 240  
CHARLOTTE, NC 28278

SCORE: ES/WBC 2016  
DESIGN TYPE: BRW  
LS&C PROJECT #: 00107078

PACKAGE: A/E PROJECT #:  
NEW  
GENERATION:  
1815.03  
51.5512

DATE ISSUED: 03/13/18  
DESIGNED BY: RWB  
DRAWN BY: TBA  
CHECKED BY: JDM

ELECTRICAL LIGHTING PLAN

DRAWING NUMBER:  
E03.01

REVISIONS:

ELITE CONSTRUCTION GROUP  
LAKE JACKSON, TX  
PHONE: (979) 284-5075  
NOTE: THESE PRENTS HAVE BEEN  
REVIEWED BY SUPERVISOR. NO MORE  
WILL BE 50 PERCENT OF WHAT IS  
NOTED ON PLANS.

REVISIONS:

REVISIONS:

DATE ISSUED: 03/13/18  
DESIGNED BY: RWB  
DRAWN BY: TBA  
CHECKED BY: JDM

ELECTRICAL LIGHTING PLAN

DRAWING NUMBER:  
E03.01