

Order Plans @

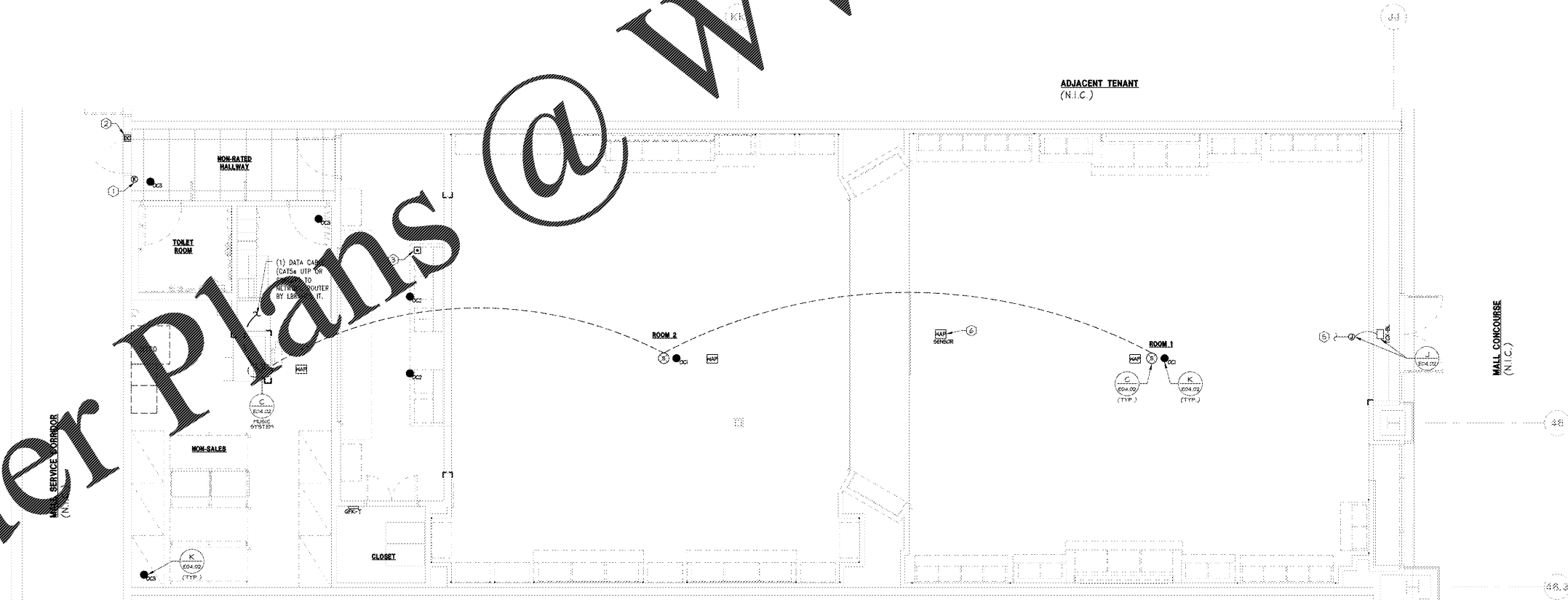
- NOTE:**
ALL SPEAKER AND SUBWOOFER CABLING IS RASST-CHAINED IN PARALLEL SPEAKER-TO-SPEAKER WITHIN THE SAME BRAND OF THE STORE. (I.E. LOW SIDE SPEAKER SHALL NOT BE TIED TO WBC SIDE SPEAKER.)
- NOTE:**
THERE SHALL NOT BE NO MORE THAN (3) CABLES RUNNING TO/FROM EACH SPEAKER.
- NOTE:**
MAINTAIN A SINGLE CABLE BETWEEN ROOMS TO AVOID EXCESSIVE CABLE PULLS. SPEAKER-TO-SPEAKER CABLE PULL WITHIN EACH ROOM ARE DISCRETIONARY AS LONG AS EVERY SPEAKER AND SUBWOOFER IS ACCOUNTED FOR.
- NOTE:**
WIRELESS ACCESS POINT (WAP) DEVICES TO BE PLACED WITHIN 35 FEET RADIUS FROM EACH OTHER.

- 1 KEYPAD FOR LVAN SYSTEM, MOUNTED WITH TOP AT 42" AFF AT LATCH-SIDE OF BACK EXIT DOOR, AND WITH 1/2" CONDUIT UP WALL TO JUNCTION BOX ABOVE CEILING.
- 2 DOOR CONTACT FOR LVAN SYSTEM. GENERAL CONTRACTOR SHALL FURNISH AND INSTALL JUNCTION BOX AND 3/4" CONDUIT FROM ABOVE CEILING TO 6" FROM DOOR, ALIGNED WITH TOP OF DOOR FOR SWING DOORS.
- 3 INSTALL BUTTON FOR LVAN SYSTEM INSIDE CASHWRAP. COORDINATE EXACT LOCATION WITH LBD&C'S PROJECT MANAGER.
- 4 PROVIDE JUNCTION BOX WITH SINGLE GANG PLASTER RING AT 60" AFF FOR VOLUME CONTROL. PROVIDE 1/2" EMPTY CONDUIT WITH PULL STRING TO MISC SYSTEM.
- 5 JUNCTION BOX FOR TRAFFIC COUNTER SHALL BE LOCATED IN AN ACCESSIBLE AREA. REFER TO SHEET E02.01 FOR ACCESS PANEL LOCATION.
- 6 WAP SENSOR SHALL BE LOCATED 35 FEET FROM ENTRY DOOR.
- 7 JUNCTION BOX FOR VIDEO DATA-SEE VIDEO WALL DETAIL ON SHEET E04.02.

CABLE IDENTIFICATION TABLE

CABLE	DESCRIPTION/TYPE	PURPOSE
	16AWG / 2 CONDUCTOR SINGLE TWISTED PAIR, PLENUM	LOUDSPEAKER & SYSTEM 1 VOLUME CONTROL
	CRESTON DM-CBL-ULTRA-P SHIELDED CAT7, PLENUM	VIDEO SIGNAL
	CAT5e OR CAT6 UTP	NETWORK & SYSTEM 2-4 VOLUME CONTROL

ELEC. LOW VOLTAGE PLAN KEYNOTES NTS D
10/27/16



TBA
Thorson-Baker + Associates
CONSULTING ENGINEERS
3030 West Shiloh Station Road, Columbus, Ohio 43260
3300 West Shiloh Station Road, Columbus, Ohio 43260
Telephone: 614.415.7000 · Fax: 614.415.7049

Lbrands
STORE DESIGN & CONSTRUCTION
Three Limited Parkway · Columbus, Ohio 43230
Telephone: 614.415.7000 · Fax: 614.415.7049

PROJECT INFORMATION:
104.01.2445.01
BATH & BODY WORKS
CHARLOTTE PREMIUM OUTLETS
5404 NEW FASHION WAY
SPACE NO. 240
CHARLOTTE, NC 28278

SCORE: ES/WBC 2016
DESIGN TYPE: A/E
LSD&C PROJECT #: 201107078

DATE ISSUED: 03/13/18
DESIGNED BY: ROW
DRAWN BY: TBA
CHECKED BY: JDW

ELECTRICAL LOW VOLTAGE PLAN

DRAWING NUMBER: E02.51

1/4" = 1'-0" A