

104.01.2445.01

BATH & BODY WORKS
CHARLOTTE PREMIUM OUTLETS
5404 NEW FASHION WAY
CHARLOTTE, NC 28278

PACKAGE
DATE: 02/10/17
PROJECT #:

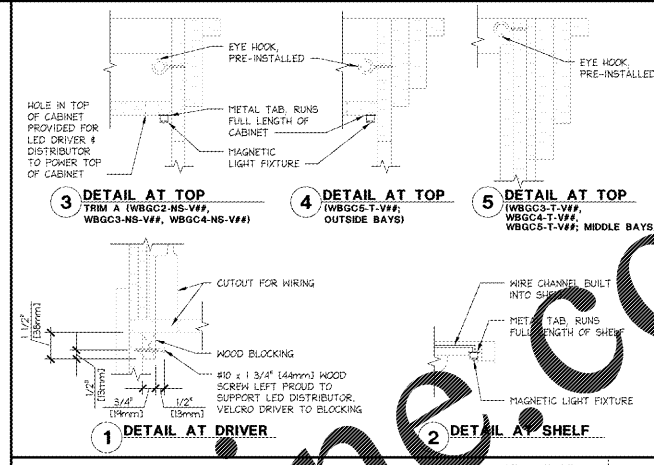
PROJECT INFORMATION:

REVISIONS:
02/10/17
04/17

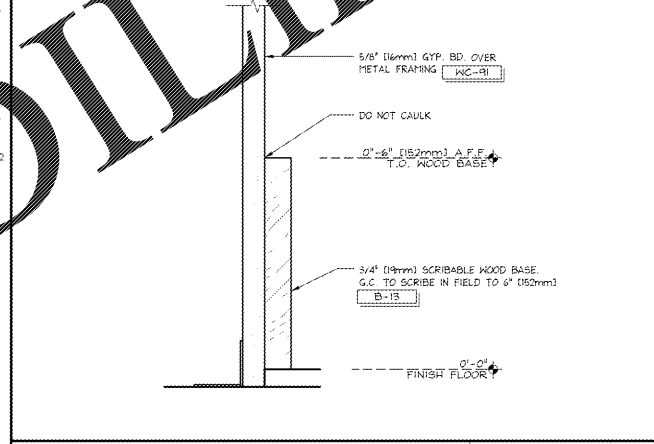
DATE ISSUED: 03/13/18
DESIGNED BY: SO
DRAWN BY: JKH
CHECKED BY: JKH

WBC PERIMETER CABINETRY DETAILS

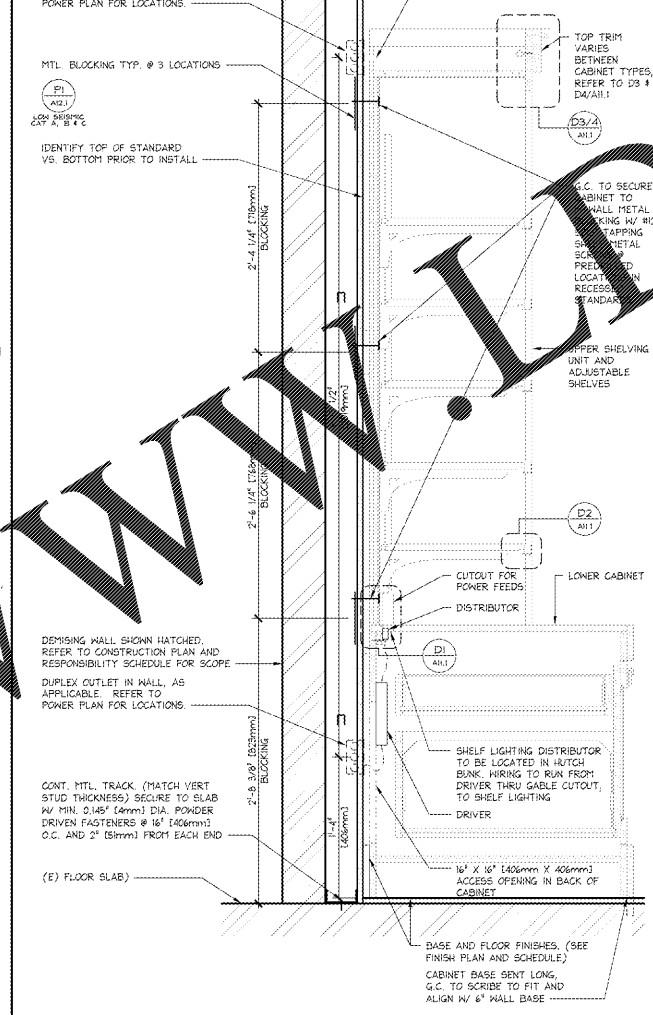
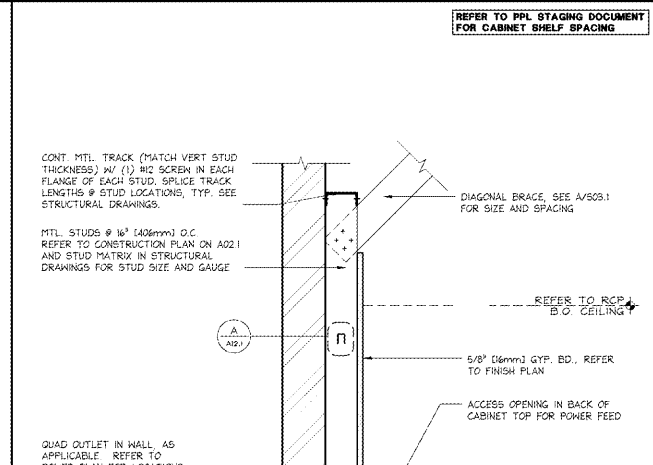
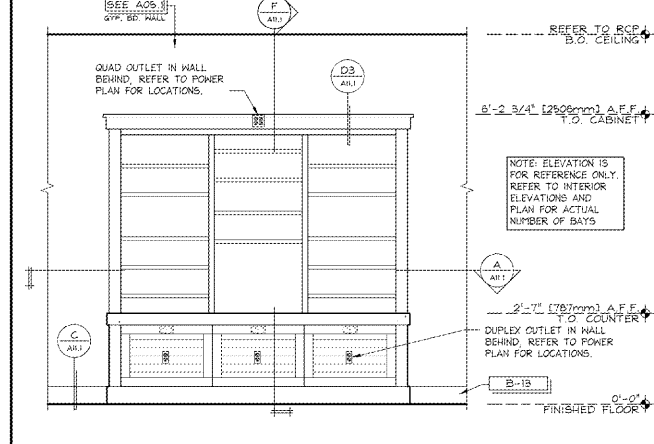
DRAWING NUMBER:
A11.1



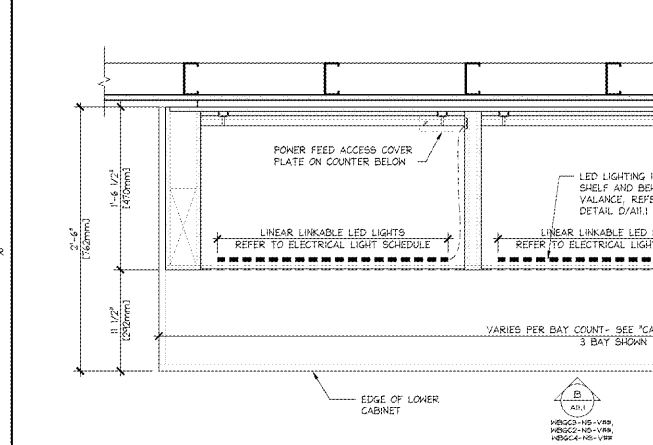
GABLED CABINET LIGHTING DETAILS
8" = 1'-0"
42D-A111-000-DETL 06.26.17



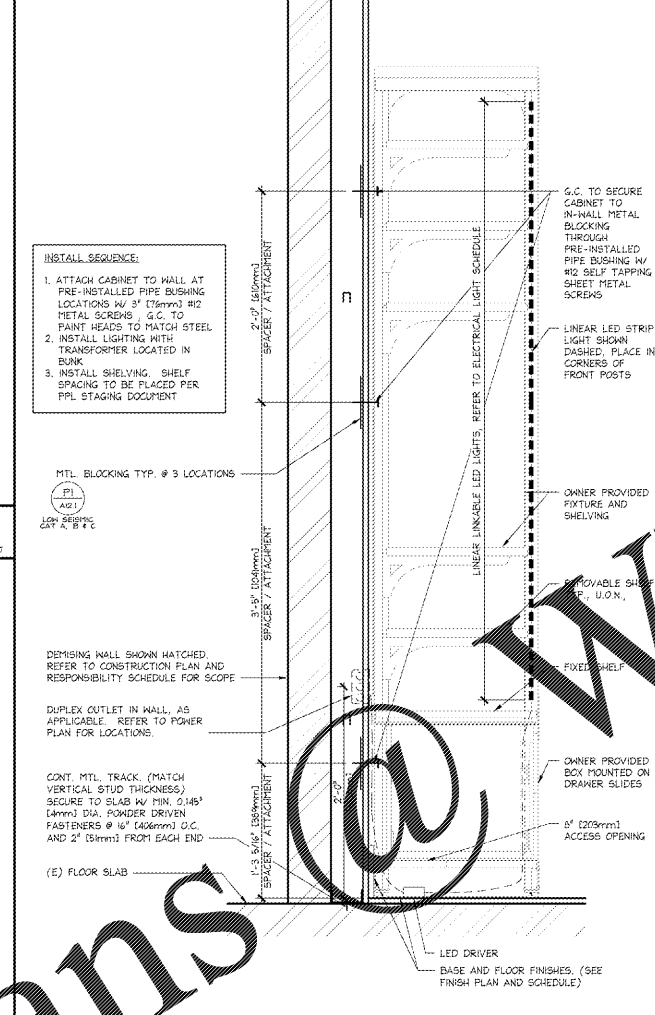
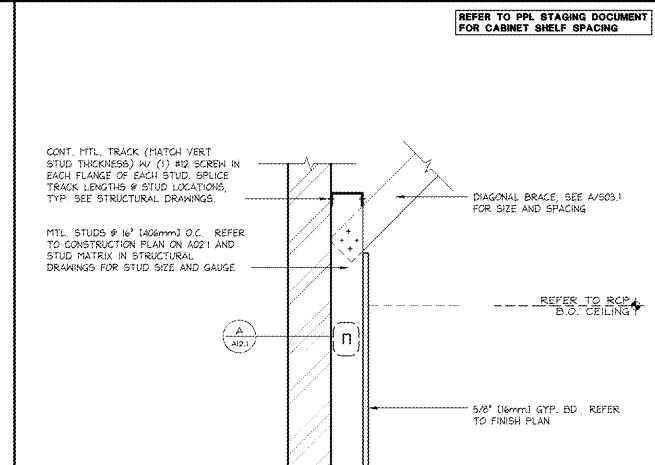
ELEVATION @ GABLED CABINET (WBGC#-NS-V##)
1/2" = 1'-0"
42E-A111-000-ELEV 10.24.17



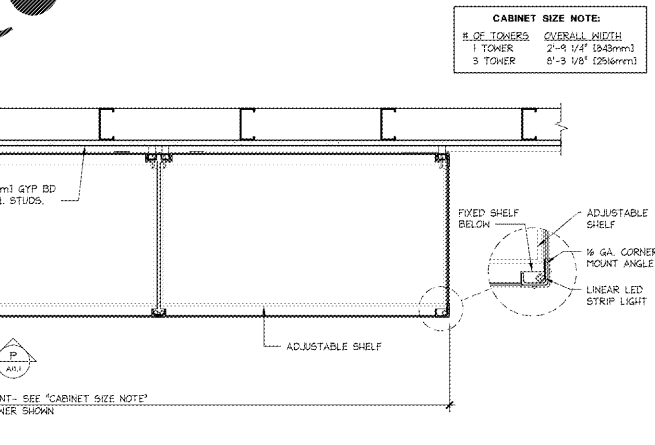
ELEVATION @ METAL TOWER (WBT#-V##)
1/2" = 1'-0"
42E-A111-000-ELEV 11.29.17



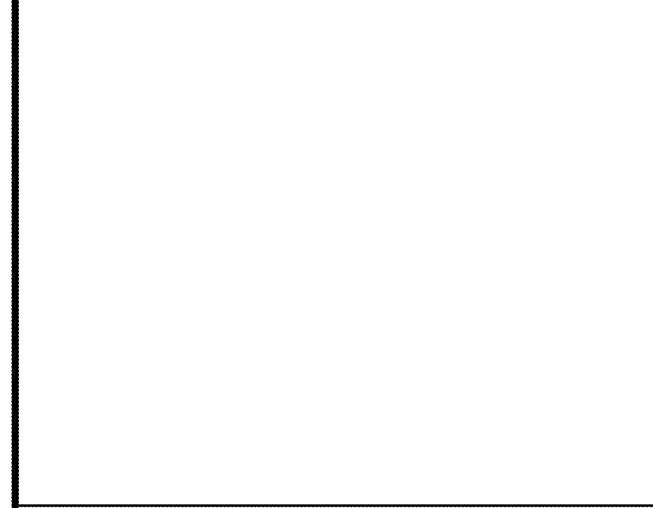
ENLARGED PLAN @ METAL TOWER (WBT#-V##)
1 1/2" = 1'-0"
42D-A111-000-DETL 11.28.17



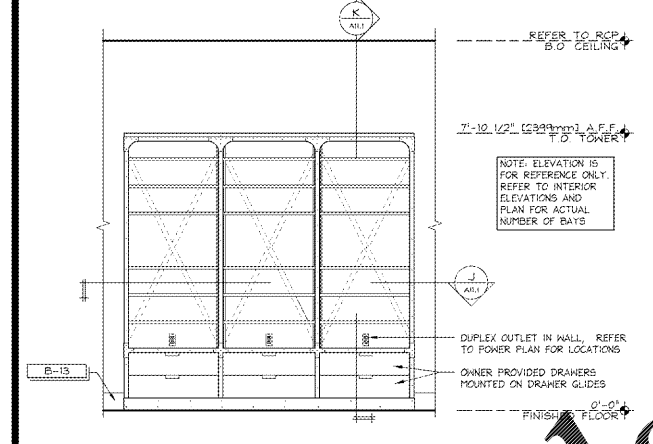
ENLARGED PLAN @ METAL TOWER (WBT#-V##)
1 1/2" = 1'-0"
42D-A111-000-DETL 11.28.17



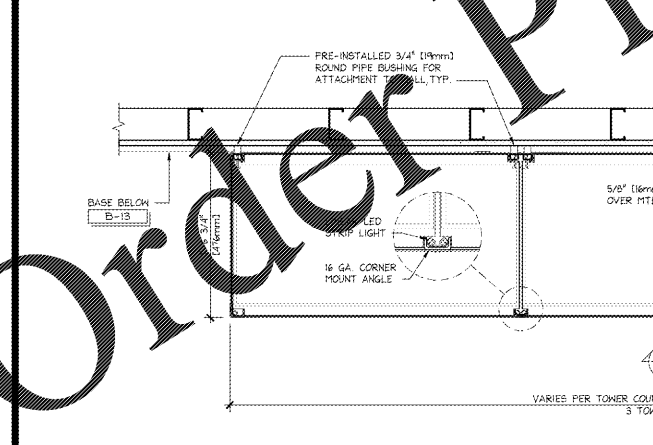
ENLARGED PLAN @ METAL TOWER (WBT#-V##)
1 1/2" = 1'-0"
42D-A111-000-DETL 11.28.17



ELEVATION @ METAL TOWER (WBT#-V##)
1/2" = 1'-0"
42E-A111-000-ELEV 11.29.17



ELEVATION @ METAL TOWER (WBT#-V##)
1/2" = 1'-0"
42E-A111-000-ELEV 11.29.17



ENLARGED PLAN @ METAL TOWER (WBT#-V##)
1 1/2" = 1'-0"
42D-A111-000-DETL 11.28.17

Order Plans

WWW.ONLINE.COM

REFER TO PPL STAGING DOCUMENT FOR CABINET SHELF SPACING

REFER TO PPL STAGING DOCUMENT FOR CABINET SHELF SPACING

CONT. MTL. TRACK (MATCH VERT STUD THICKNESS) W/ (1) #12 SCREW IN EACH FLANGE OF EACH STUD. SPLICE TRACK LENGTHS @ STUD LOCATIONS. TYP. SEE STRUCTURAL DRAWINGS.
MTL STUDS @ 16" (406mm) O.C. REFER TO CONSTRUCTION PLAN ON A02.1 AND STUD MATRIX IN STRUCTURAL DRAWINGS FOR STUD SIZE AND GAUGE

CONT. MTL. TRACK (MATCH VERT STUD THICKNESS) W/ (1) #12 SCREW IN EACH FLANGE OF EACH STUD. SPLICE TRACK LENGTHS @ STUD LOCATIONS. TYP. SEE STRUCTURAL DRAWINGS.
MTL STUDS @ 16" (406mm) O.C. REFER TO CONSTRUCTION PLAN ON A02.1 AND STUD MATRIX IN STRUCTURAL DRAWINGS FOR STUD SIZE AND GAUGE

INSTALL SEQUENCE:
1. ATTACH CABINET TO WALL AT PRE-INSTALLED PIPE BUSHING LOCATIONS W/ 3" (76mm) #12 METAL SCREWS. G.C. TO PAINT HEADS TO MATCH STEEL.
2. INSTALL LIGHTING WITH TRANSFORMER LOCATED IN BUNK.
3. INSTALL SHELVING. SHELF SPACING TO BE FLAGGED PER PPL STAGING DOCUMENT

INSTALL SEQUENCE:
1. ATTACH CABINET TO WALL AT PRE-INSTALLED PIPE BUSHING LOCATIONS W/ 3" (76mm) #12 METAL SCREWS. G.C. TO PAINT HEADS TO MATCH STEEL.
2. INSTALL LIGHTING WITH TRANSFORMER LOCATED IN BUNK.
3. INSTALL SHELVING. SHELF SPACING TO BE FLAGGED PER PPL STAGING DOCUMENT

MTL. BLOCKING TYP. @ 3 LOCATIONS
LOW ZEPHYR CPT A, B, C

MTL. BLOCKING TYP. @ 3 LOCATIONS
LOW ZEPHYR CPT A, B, C

DEMISING WALL SHOWN HATCHED. REFER TO CONSTRUCTION PLAN AND RESPONSIBILITY SCHEDULE FOR SCOPE

DEMISING WALL SHOWN HATCHED. REFER TO CONSTRUCTION PLAN AND RESPONSIBILITY SCHEDULE FOR SCOPE

CONT. MTL. TRACK (MATCH VERTICAL STUD THICKNESS) SECURE TO SLAB W/ MIN. 0.145" (4mm) DIA. POWDER DRIVEN FASTENERS @ 16" (406mm) O.C. AND 2" (51mm) FROM EACH END

CONT. MTL. TRACK (MATCH VERT STUD THICKNESS) SECURE TO SLAB W/ MIN. 0.145" (4mm) DIA. POWDER DRIVEN FASTENERS @ 16" (406mm) O.C. AND 2" (51mm) FROM EACH END

OWNER PROVIDED DRAWERS MOUNTED ON DRAWER GUIDES

OWNER PROVIDED DRAWERS MOUNTED ON DRAWER GUIDES

LED DRIVER
BASE AND FLOOR FINISHES. (SEE FINISH PLAN AND SCHEDULE)

LED DRIVER
BASE AND FLOOR FINISHES. (SEE FINISH PLAN AND SCHEDULE)

CABINET SIZE NOTE:
OF TOWERS OVERALL WIDTH
1 TOWER 2'-9 1/4" (843mm)
3 TOWER 8'-3 1/8" (2516mm)

CABINET SIZE NOTE:
OF BAYS OVERALL WIDTH
2 BAY 5'-8 5/8" (1805mm)
3 BAY 8'-1 1/4" (2462mm)
4 BAY 11'-3 1/8" (3432mm)

PRE-INSTALLED 3/4" (19mm) ROUND PIPE BUSHING FOR ATTACHMENT TO WALL, TYP.

PRE-INSTALLED 3/4" (19mm) ROUND PIPE BUSHING FOR ATTACHMENT TO WALL, TYP.

5/8" (16mm) GYP. BD. OVER MTL. STUDS.

5/8" (16mm) GYP. BD. OVER MTL. STUDS.

ADJUSTABLE SHELF

ADJUSTABLE SHELF

VARIES PER TOWER COUNT - SEE "CABINET SIZE NOTE"
3 TOWER SHOWN

VARIES PER BAY COUNT - SEE "CABINET SIZE NOTE"
3 BAY SHOWN

1 1/2" = 1'-0"
42D-A111-000-DETL 11.28.17

1 1/2" = 1'-0"
42D-A111-000-DETL 06.26.17