

104.01.2445.01

BATH & BODY WORKS
CHARLOTTE PREMIUM OUTLETS
5404 NEW FASHION WAY
CHARLOTTE, NC 28278

NEW PACKAGE
DATE: 03/13/18
PROJECT #:

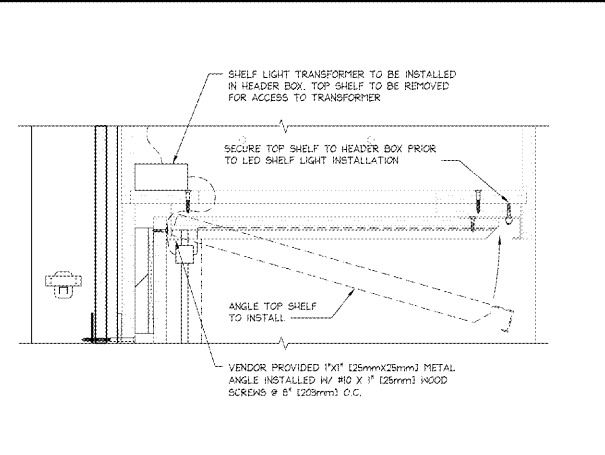
PROJECT INFORMATION:

ELITE CONSTRUCTION GROUP
LAKE JACKSON, TN
PHONE: (615) 967-1111
NOTE: THESE PRINTS HAVE BEEN
REVIEWED BY SUBMITTER'S ARCHITECT
AND WILL BE 50 PERCENT OF WHAT IS
NOTED ON PLANS.

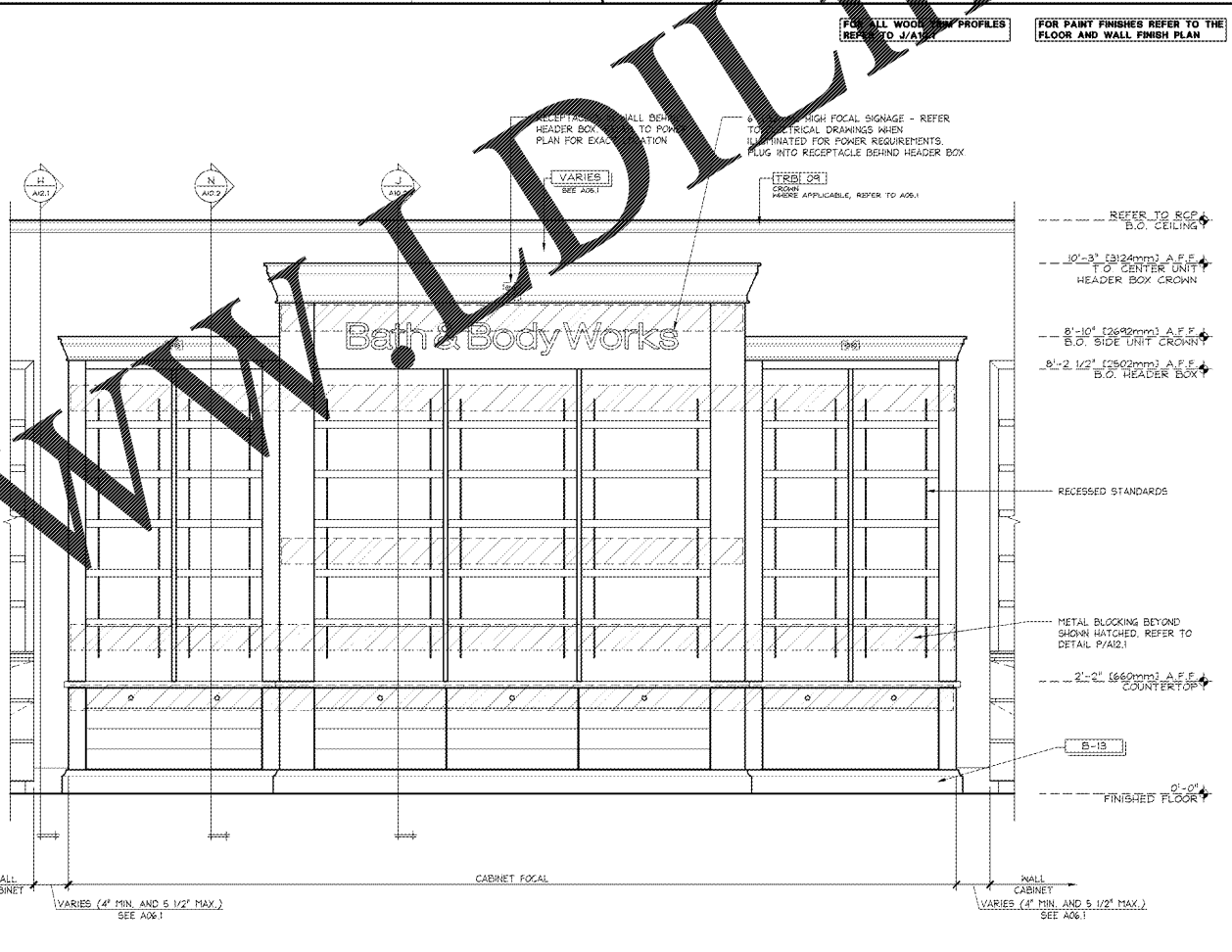
DATE ISSUED: 03/13/18
DESIGNED BY: SO
DRAWN BY: JMH
CHECKED BY: JMH

**BBW PERIMETER
CABINETRY
DETAILS**

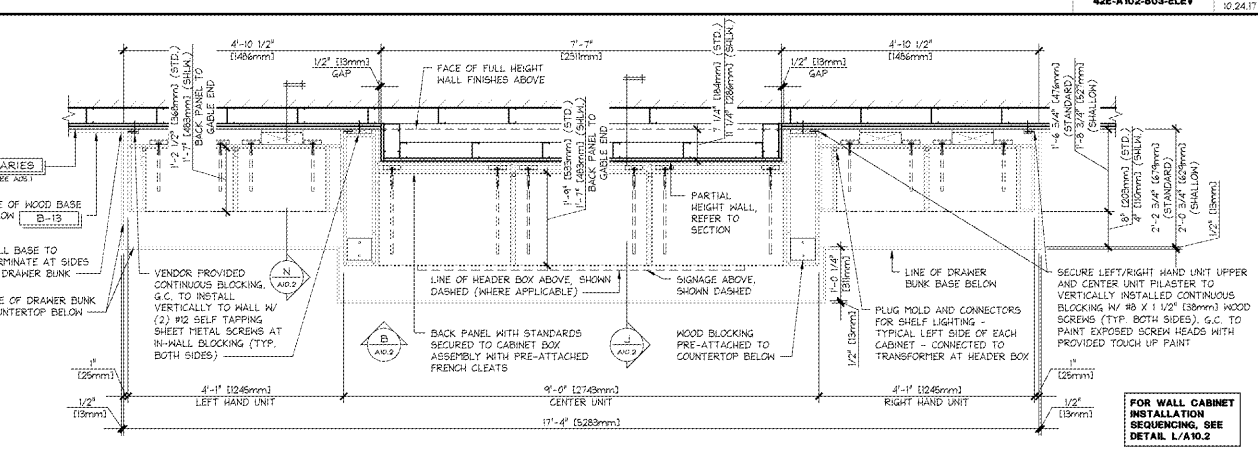
DRAWING NUMBER:
A10.2



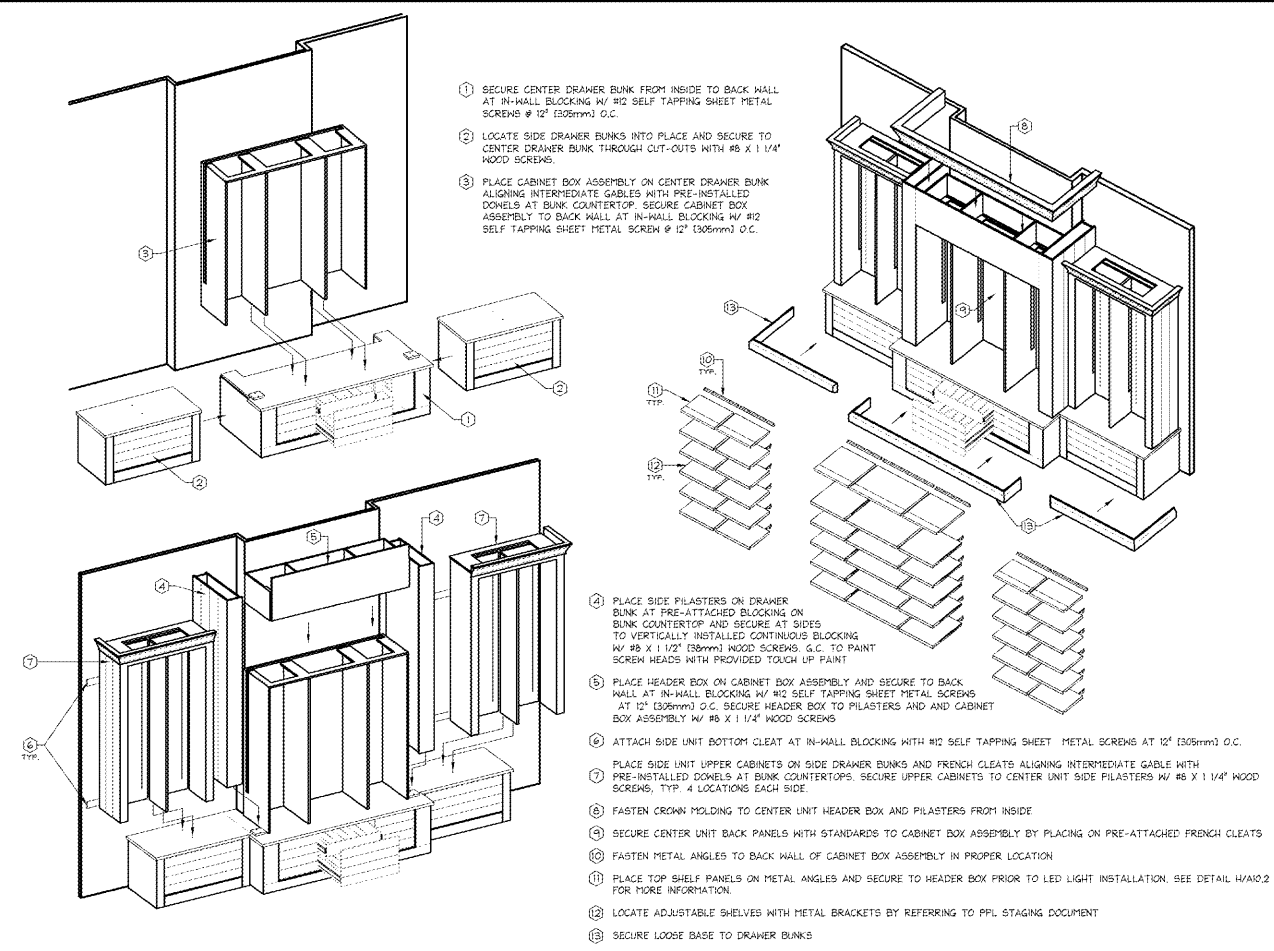
TOP SHELF INSTALLATION
3" = 1'-0" H
42D-A102-H00-DETL 06.26.17



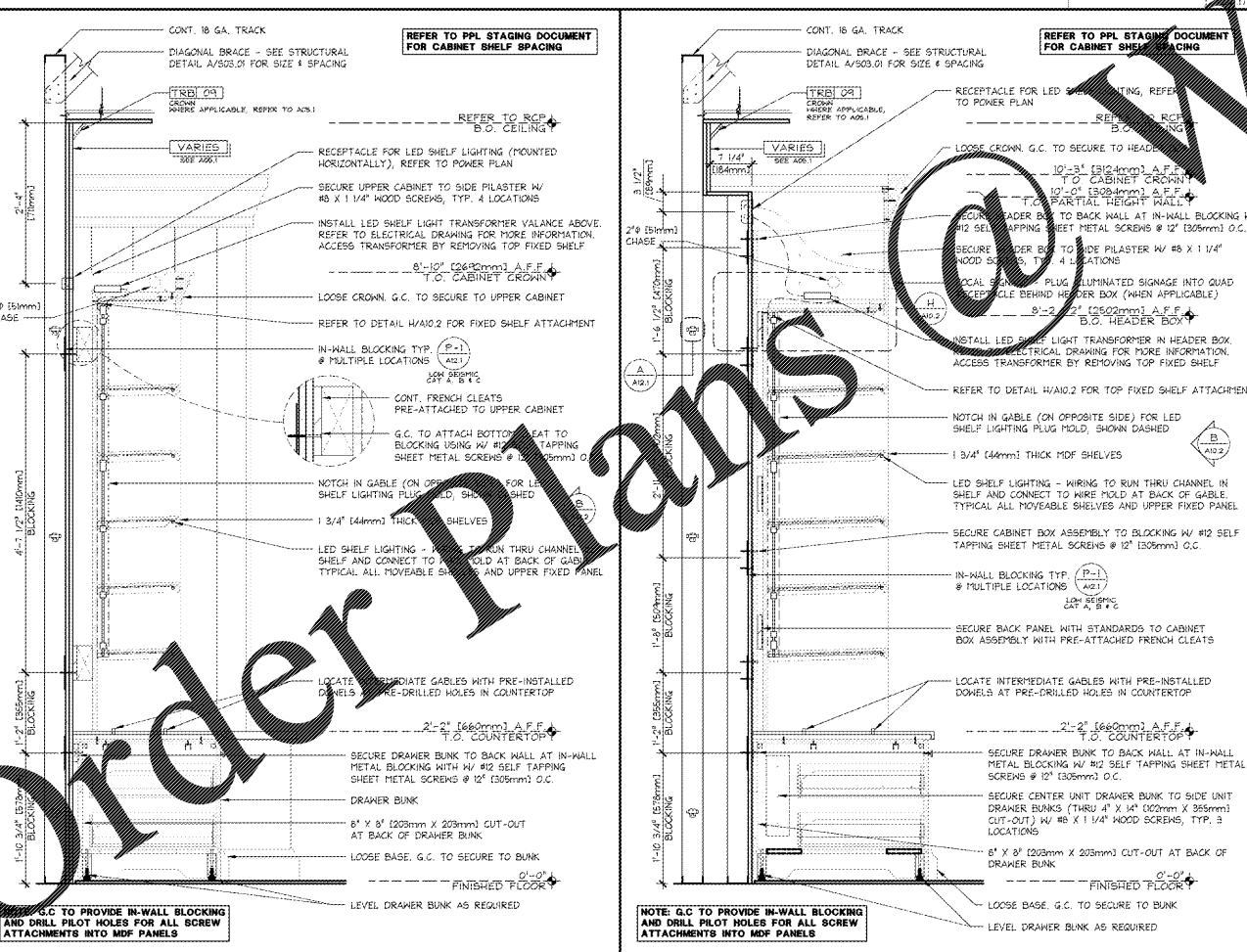
ELEVATION @ LARGE 7 BAY FOCAL CABINET (30-30-30) - BWFC7L-V##-BL
3/4" = 1'-0" B
42E-A102-803-ELEV 12.24.17



ENLARGED PLAN @ LARGE 7 BAY FOCAL CABINET (30-30-30) (BWFC7L-V##-BL, BWFC7L-S-V##-BL AND BWFC7L-V-V##-BL)
3/4" = 1'-0" A
42D-A102-A03-DETL 07.03.17



7 BAY WALL CABINET INSTALLATION SEQUENCING
3/8" = 1'-0" J
42E-A102-L01-H00 06.26.17



SECTION @ FOCAL CABINET - SIDE UNIT 1" = 1'-0" N
42S-A102-N00-SECT 06.30.17

SECTION @ FOCAL CABINET CENTER UNIT 1" = 1'-0" J
42S-A102-J01-SECT 06.30.17

Order Plans @ WWW.DIline.com