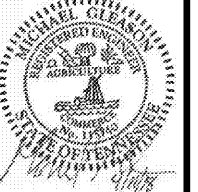


SEAL:
THIS DOCUMENT IS NOT FOR CONSTRUCTION
UNLESS THE ARCHITECT OR ENGINEER'S
SIGNATURE AND SEAL APPEAR BELOW.



Larson Engineering, Inc.
1498 Bond Street, Suite 100
Naperville, Illinois 60563-5503
(P) 630.357.0540 (F) 630.357.0154
ILLINOIS LICENSE NO. 184-001442
I.E.L. Comm. No. 24180016.006
COPYRIGHT © 2016

FIELD VERIFY ALL KITCHEN EQUIPMENT CONNECTIONS AND REQUIREMENTS PRIOR TO ROUGH-IN AND INSTALLATION OF DEVICES. VERIFY ALL DEVICE LOCATIONS AND MOUNTING HEIGHTS WITH FOOD SERVICE CONTRACTOR. MAKE ADJUSTMENTS IN FIELD TO MATCH ACTUAL EQUIPMENT BEING INSTALLED AS DIRECTED BY THE FOOD SERVICE CONTRACTOR.

INSTALL STANDARD RECEPTACLES FOR CIRCUITS DEDICATED TO SPECIFIC EQUIPMENT. SUBJECT TO THE APPROVAL OF CODE ENFORCING AGENCY.

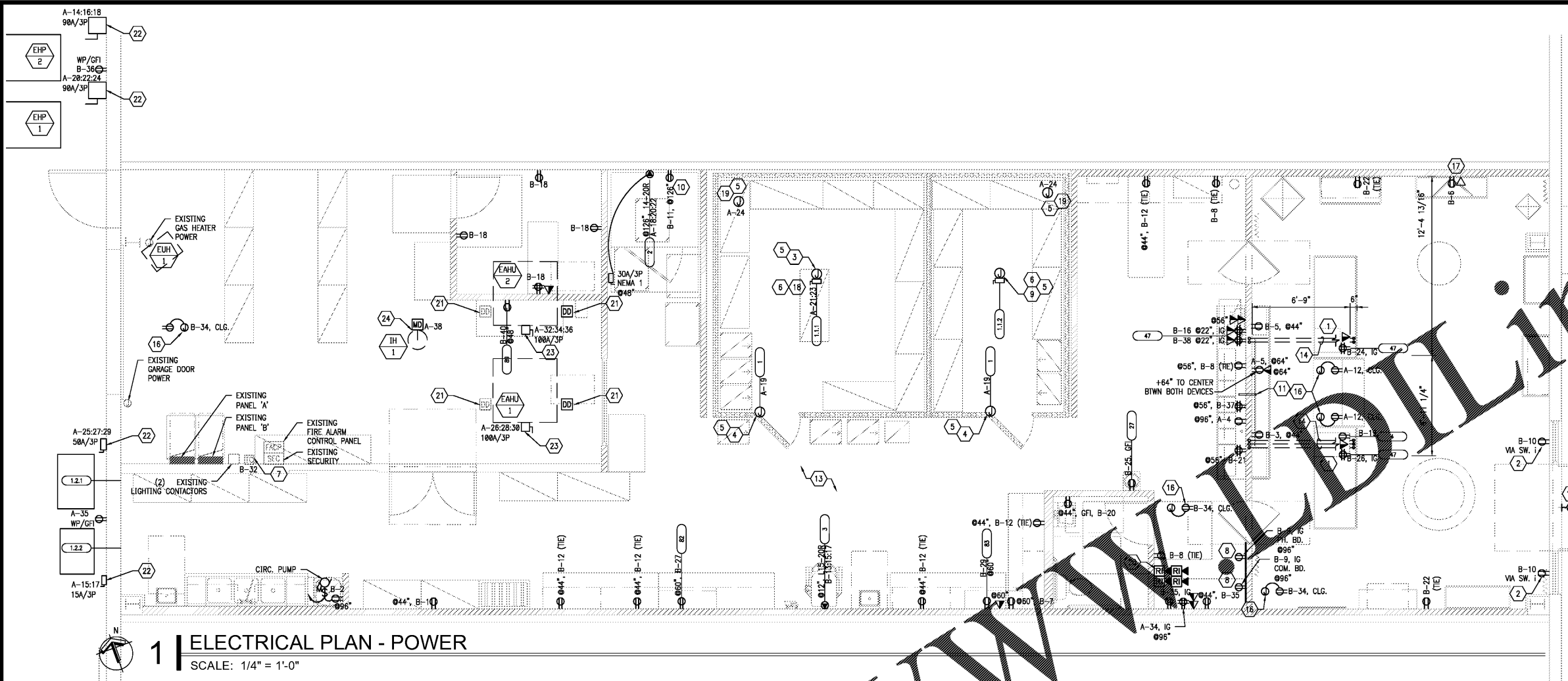
ALL 125V, SINGLE PHASE, 15 AMP AND 20 AMP RATED RECEPTACLES INSTALLED IN THE LOCATIONS SPECIFIED SHALL BE INSTALLED IN ACCORDANCE WITH THE FOLLOWING: NECART 210.8 (B)(1) - (8) SHALL HAVE GROUND FAULT CIRCUIT INTERRUPTER PROTECTION.

KEYED NOTES

1. PROVIDE RECEPTACLES MOUNTED ON MILLWORK FOR EQUIPMENT. COORDINATE EXACT LOCATION AND MOUNTING HEIGHT WITH OWNER PRIOR TO ROUGH-IN.
2. PROVIDE RECEPTACLE FOR SHOW WINDOW AS REQUIRED BY CODE. RECEPTACLE TO BE INSTALLED IN THE LOCATION SPECIFIED BY THE LOCAL AGENCY. VERIFY EXACT LOCATION WITH ARCHITECT.
3. PROVIDE 20A, 2P, NEMA 3R DISCONNECT SWITCH FOR WALK-IN EVAPORATOR COIL. PROVIDE 1/2" CONDUIT AND 6 CONTROL WIRES FROM THE CONDENSING UNIT ON THE ROOF TO THE CORRESPONDING EVAPORATOR IN THE WALK-IN PER MANUFACTURER INSTRUCTIONS.
4. PROVIDE 120V POWER FOR WALK-IN COOLER AND WALK-IN FREEZER LIGHTS AND DOOR HEATER. PROVIDE WIRE AND LAMPS FOR WALK-IN FREEZER LIGHTS.
5. MAKE PENETRATIONS IN WALK-IN COOLER/CHILLER WITH CONDUIT SEALING FITTINGS & NIPPLE TO CAST FIXTURE J-BOX. AS REQUIRED BY CODE. PROVIDE JOINTS TO COMPENSATE FOR THERMAL EXPANSION/CONTRACTION WHERE CIRCULATION OF AIR FROM WARMER TO COLDER SECTIONS OF INTERIOR SPACEWAY SYSTEM ARE EXPOSED TO WIDELY DIFFERENT TEMPERATURES.
6. REQUIREMENTS FOR WALK-IN COOLER/CHILLER:
 - A.A. PROVIDE WIRING TO EVAPORATOR.
 - A.B. PROVIDE CONTROL WIRING BETWEEN CONDENSER & EVAPORATOR.
 - A.C. INSTALL FREEZER & COOLER LIGHT FIXTURES THAT ARE SHIPPED LOOSE.
 - A.D. PROVIDE POWER AND CONTROL WIRING FOR FREEZER CONDENSER AND HEAT TAPE DIRECTLY FROM FREEZER CONDENSER.
 - A.E. VAPOR SEAL ALL CONDUIT PENETRATIONS. PENETRATIONS MUST BE PROPERLY SEALED AGAINST COOLD LOSS AND INFILTRATION TO PREVENT CONDENSATION AND ICE FORMATION. SILICONE CAULKING IS THE RECOMMENDED SEALANT.
7. LOCATION OF EXISTING INTERIOR AND EXTERIOR TIMECLOCKS.
8. PROVIDE A 24"x24"x3/4" FIRE RETARDANT BACKBOARD WITH VISIBLE LABEL INDICATING FIRE RATING. DO NOT PAINT BACKBOARD. PROVIDE CONDUIT AND WIRE FROM LANDLORD'S DEMARC TO LOCATION SHOWN. PROVIDE EQUIPMENT GROUNDING CONDUCTORS AND GROUND BUS ATTACHED TO BACKBOARD.
9. PROVIDE 20A, 1P, NEMA 3R FOR WALK-IN EVAPORATOR COIL. PROVIDE 1/2" CONDUIT AND 6 CONTROL WIRES FROM THE CONDENSING UNIT ON GROUND OUTSIDE TO THE CORRESPONDING EVAPORATOR IN THE WALK-IN PER MANUFACTURER INSTRUCTIONS.
10. ROUTE POWER FOR OVEN ACROSS TOP OF OVEN IN CONDUIT TO BACK WALL AND THEN UP BACK WALL AND THROUGH CEILING TO ELECTRICAL PANEL.
11. PROVIDE 1-1/2" PVC AT 86" AFF WITH ESCUTCHEON PLATE FOR DIGITAL SCREEN. AFFIX PVC AND PLATE IN PLACE WITH SILICON. WIRE TO UPS AND AMP.
12. NOT USED.
13. PROVIDE ALL REQUIRED JUNCTION BOXES, CONDUIT, AND PULL STRING FOR THERMOSTATS AND SENSORS. COORDINATE LOCATION WITH MECHANICAL PLANS PRIOR TO BID, ROUGH-IN, AND INSTALLATION.
14. COORDINATE WITH FLOOR SLAB FOR THE INSTALLATION OF UNDERGROUND CONDUITS TO SERVE MILLWORK. VERIFY NO STRUCTURAL ELEMENTS ARE BELOW GRADE PRIOR TO SAW CUTTING. PROVIDE NEW CONCRETE FLOOR PATCH IN AREA OF SLAB REMOVAL. INSTALL NEW FLOOR FINISH OVER NEW SLAB PATCH AS INDICATED ON ARCHITECTURE FINISH SCHEDULE. ANY DAMAGE TO STRUCTURAL ELEMENTS MADE DURING CONSTRUCTION SHALL BE REPAIRED AT CONTRACTOR'S SOLE EXPENSE.
15. J-BOX FOR EXTERIOR SIGN. VERIFY EXACT LOCATION AND HEIGHT WITH SIGN COMPANY. SIGN CONTROLLED BY 7-DAY PROGRAMMABLE TIME CLOCK. PROVIDE 3/4" CONDUIT TO EXTERIOR FOR SIGN WIRING.
16. PROVIDE JUNCTION BOX ABOVE THE CEILING WITH FACE OF RECEPTACLE FLUSH WITH CEILING TILE FOR SECURITY CAMERA. COORDINATE EXACT LOCATION WITH SECURITY VENDOR PRIOR TO ROUGH-IN.
17. PROVIDE EMPTY CONDUIT WITH PULL STRING AND JUNCTION BOX WITH A COVER PLATE FOR FUTURE DIGITAL CAKE BOOK. PLACE JUNCTION BOX HORIZONTAL AT 18" AFF. CONDUIT TO TERMINATE 6" ABOVE CEILING.
18. POWER FOR CONDENSING UNITS ON GROUND OUTSIDE. REFER TO THIS SHEET.
19. POWER FOR HEAT TRACE.
20. REMOTE TEST STATION. SEE ELECTRICAL NOTE #21 ON THIS SHEET.
21. FIRE ALARM DUCT SMOKE DETECTORS SHALL BE FURNISHED AND INSTALLED BY THE MECHANICAL CONTRACTOR AND WIRED BY THE ELECTRICAL CONTRACTOR (IF NOT EXISTING). PROVIDE A REMOTE TEST SWITCH ACCESSIBLE FOR SUPPLY & RETURN DUCT SMOKE DETECTORS FOR THE FIRE DEPARTMENT USE. COORDINATE REMOTE TEST SWITCH LOCATION WITH THE FIRE DEPARTMENT.
22. PROVIDE NEMA 3R FUSIBLE DISCONNECT SWITCH (SIZE AS NOTED). FUSE PER MANUFACTURER'S NAMEPLATE.
23. PROVIDE NEMA 1 FUSIBLE DISCONNECT SWITCH (SIZE AS NOTED). FUSE PER MANUFACTURER'S NAMEPLATE.
24. PROVIDE 20A, 120V POWER FOR MOTORIZED DAMPER.

GENERAL NOTES

1. PROVIDE MEANS TO FURNISH AND INSTALL TO BE COMPLETELY OPERATIONAL.
2. REFER TO ROUGH-IN NOTES ON SHEET E0.0.
3. REFER TO DEMOLITION NOTES ON SHEET E0.0.
4. EXISTING TELECOMMUNICATIONS WIRING AND EQUIPMENT SHALL BE MOVED COMPLETE FROM EXISTING LOCATION TO WHERE SHOWN ON THIS DRAWING.
5. EXISTING SECURITY WIRING AND EQUIPMENT SHALL BE MOVED COMPLETE FROM EXISTING LOCATION TO NEW LOCATION ALONG WITH TELECOMMUNICATIONS.
6. EXISTING FIRE ALARM DEVICES SHALL REMAIN.

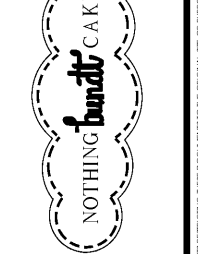


1 ELECTRICAL PLAN - POWER
SCALE: 1/4" = 1'-0"

FIXTURE / EQUIPMENT SCHEDULE			VOLTS	PHASE	AMPS	HP	D	PLUG	NEMA	A.F.F. (N) OUTLET ELEC.	PLUMBING / ELECTRICAL REMARKS
NO.	QTY.	DESCRIPTION									
1	2	WALK-IN REFRIGERATOR/CHILLER	120	1	6.2					CLG.	LIGHTS, DOOR HEATER
1.1.1	1	EVAPORATOR COIL - CHILLER	208	3	3.6					CLG.	ELEC. CONTR. TO RUN (5) #10 WIRE IN CONDUIT TO #1.3
1.1.2	1	EVAPORATOR COIL - REFRIGERATOR	120	1	3.6					CLG.	
1.2.1	1	PRE-ASSEMBLED REMOTE CONDENSING - CHILLER	208	3	38					CLG.	VERIFY LOCATION OUTSIDE
1.2.2	1	PRE-ASSEMBLED REMOTE CONDENSING UNIT - REFRIGERATOR	208	3	15					CLG.	VERIFY LOCATION OUTSIDE
2	1	STAINLESS STEEL RACK OVEN	208	3	5.0					CLG.	
3	1	REFRIG. DISPLAY CASE	208	3	16.1	4.0			L15-20R	+12"	
4	1	REFRIG. DISPLAY CASE	120	1	15.7				5-15P	+16"	LOCATE OUTLET AT NEW P.O.S. COUNTER
27	1	WATER COOLED CONDENSER	120		1.2				5-15P	+24"	
17		POINT OF SALE TERMINALS	120	1	5.8	0.5				FLR.	STUB UP J-BOX FOR ITEMS #11 & 26
8		BLENDER/MIXER, VEG. PREP. AND SCALE	120	1	7.0	1.0	X	X	5-15P	+56"	
83		MICROWAVE	120	1	13.4				5-15P	REFER TO PLAN	
89	1	OPTIONAL MICROWAVE BY OWNER	120	1	13.4				5-15P	REFER TO PLAN	

04.11.18 PERMIT SUBMIT
04.04.18 OWNER REVIEW

NO. DATE REMARKS
REVISIONS



CREEKSIDE PLAZA
4110 N.MT. JULIET RD.
MT. JULIET, TN 37122

PROJECT NO: 2018.0044
DATE: 04.11.18

E2.0
ELECTRICAL POWER PLAN

CHECKED: MFG DRAWN: SLB

Order Plans @ WWW.INTERPLANS.COM

WWW.INTERPLANS.COM

COPYRIGHT © 2016 INTERPLANS, LLC. REPRODUCE, COPY, OR TRANSMIT IN ANY MANNER WITHOUT THE WRITTEN PERMISSION OF INTERPLANS, LLC. ALL RIGHTS RESERVED. REPRODUCTIONS, CHANGES OR ASSIGNMENTS ARE PROHIBITED.