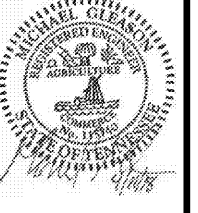


SEAL:
THIS DOCUMENT IS NOT FOR CONSTRUCTION
UNLESS THE ARCHITECT OR ENGINEER'S
SIGNATURE AND SEAL APPEAR BELOW.



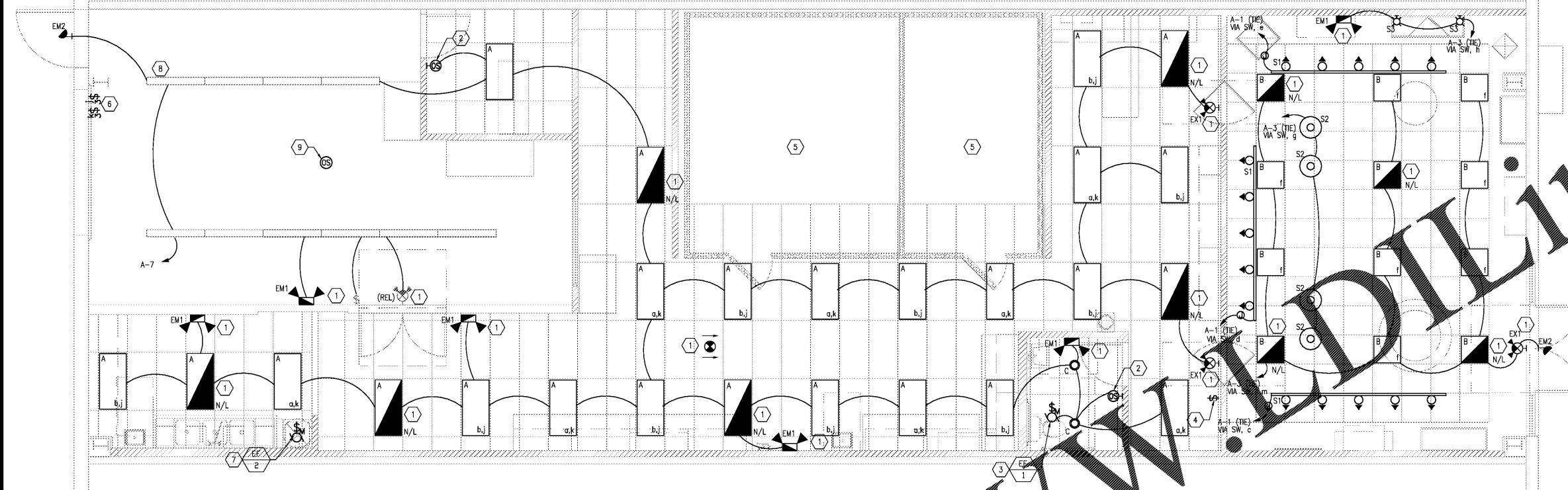
Larson Engineering, Inc.
1498 Bond Street, Suite 100
Naperville, Illinois 60563-6503
(P) 630.357.0540 (F) 630.357.0194
ILLINOIS LICENSE NO. 184-001142
I.E.L. Comm. No. 24180016.006
COPYRIGHT © 2016

GENERAL NOTES

1. PROVIDE MEANS FURNISH AND INSTALL TO BE COMPLETELY OPERATIONAL.
2. ALL EXISTING LIGHTING SHALL BE REMOVED COMPLETE, U.N.O. REUSE EXISTING CIRCUITS AS AVAILABLE FOR NEW LIGHT FIXTURES. ANY REMAINING SHALL BE REMOVED BACK TO SOURCE.

KEYED NOTES

1. EMERGENCY LIGHTS, NIGHT LIGHTS, AND EXIT SIGNS SHALL BE WIRED AHEAD OF ALL CONTROL (NOT SWITCHED).
2. PROVIDE A WALL-MOUNTED OCCUPANCY SENSOR. REFER TO OCCUPANCY SENSOR SCHEDULE ON THIS SHEET.
3. INTERLOCK EXHAUST FAN AND RESTROOM LIGHTING SO THAT THEY ARE SWITCHED TOGETHER VIA LOCAL OCCUPANCY SENSOR.
4. SWITCH BANK CONSISTING OF SWITCHES UNDER A COMMON FACEPLATE FOR CONTROL OF LIGHTING. MOUNT AT A MAXIMUM OF 48" AFF. LABEL EACH SWITCH PER AREA SERVED WITH STATUS INDICATOR PER IECC. PROVIDE (1) EXTRA SWITCH WITH CONDUIT TERMINATED ABOVE CEILING FOR FUTURE CONNECTION. REFER TO DETAIL 2 ON THIS SHEET.
5. INSTALL WALK-IN COOLER/CHILLER LIGHTS THAT ARE SHIPPED LOOSE. CONNECT TO CIRCUIT A-19. LIGHTING IN COOLER MUST PROVIDE A MINIMUM AVERAGE OF 10 FOOTCANDLES AT 30" ABOVE THE FLOOR PER TEXAS DEPARTMENT OF STATE HEALTH SERVICES TITLE 25 (228.17(1)).
6. LOCATE SWITCHES "j" AND "k" AT BACK ENTRANCE. SWITCHES TO CONTROL BACK OF HOUSE LIGHTING IN CONJUNCTION WITH SWITCHES "o" AND "b". REFER TO DETAIL 2 ON THIS SHEET.
7. EXHAUST FAN SHALL RUN DURING BUSINESS HOURS VIA TIMELOCK.
8. EXISTING LIGHT FIXTURES TO REMAIN AND BE RELOCATED AS SHOWN. ELECTRICAL CONTRACTOR SHALL REPLACE LAMPS AND CLEAN FIXTURES TO "LIKE-NEW" CONDITION. SHOULD THESE LIGHT FIXTURES NOT BE RE-USABLE, E.C. SHALL PURCHASE SIMILAR AND REPLACE.
9. PROVIDE OCCUPANCY SENSOR PER SCHEDULE ON THIS SHEET. MOUNT SENSOR ON JOIST OR ROD AT 15' A.F.F.



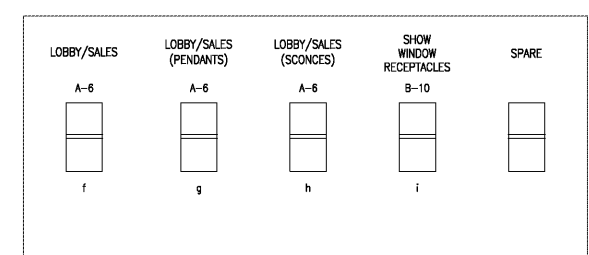
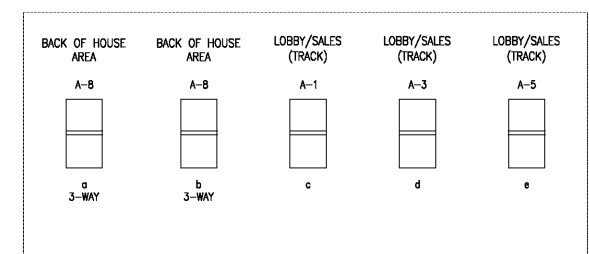
1 | ELECTRICAL PLAN - LIGHTING
SCALE: 1/4" = 1'-0"

LUMINARIES SCHEDULE					
MARK	MANUF.	ITEM #	W	DESCRIPTION	REMARKS
A	QUALITY LIGHT SOURCE	LPL2405035E	50	2'x4' LAY-IN LIGHT PANEL - LED LAMP, 500K	LENSED FOR FOOD SERVICE
	QUALITY LIGHT SOURCE	AS SPEC ABOVE	50	2'x4' LAY-IN LIGHT PANEL AS SPEC ABOVE	CONNECT AHEAD OF SWITCHING (24-HOUR HOT)
B	METALUX	22CZ-LD4-24-UNW-LB35-CD1-U	23	2'x2' LAY-IN LIGHT TROFFER - LED LAMP, 500K	ACRYLIC DIRECT / INDIRECT
	METALUX	AS SPEC ABOVE	23	2'x2' LAY-IN LIGHT TROFFER AS SPEC ABOVE	CONNECT AHEAD OF SWITCHING (24-HOUR HOT)
C	HALO	HOUSING: H750CAT / TRIM: RL560WH6930	8.5	6" RECESSED CAN LIGHT	
S1	JUNO	R6WH TRACK / R23WH LIVE END / R701-WH HEAD	10	WHITE WALL WASHER TRACK LIGHTING - 50W EQUIVALENT LED LAMPS (PER HEAD) ON 6" TRACK	N.E.C. CALCULATED @75W PER FOOT ENERGY CALCULATED @ 45W PER FOOT
S2	TECH LIGHTING	FAB PENDANT #700MP-FAB-A-S-LEDS830	8	FABRIC SHADE, PENDANT LIGHTING ABOVE P.O.S. COUNTERS, SYSTEM: MONOPOINT, COLOR: ALMOND, FINISH: SATIN NICKEL LED LAMP LEDS830	INSTALL FIXTURES W/ BOTTOM AT 6'-0" A.F.F.
S3	KICHLER	42634CH PARKER POINT WALL SCONCE, CHROME	8	WALL SCONCE, 50W EQUIVALENT, FINISH: CHROME, LED LAMP	WALL SCONCE W/ OPTICAL CRYSTAL AND ORGANZA FABRIC SHADE - INSTALL FIXTURES W/ CENTER AT 5'-3" A.F.F.
EX1	SURE-LITES	SPC SERIES - WHITE	2.4	COMBINATION EMERGENCY EXIT SIGN W/ (2) EMERGENCY FLOOD LAMPS, RED	90 MINUTE BATTERY BACK-UP
EM1	SURE-LITES	CU2-LED - WHITE	5.4	EMERGENCY LIGHT W/ (2) EMERGENCY FLOOD LAMPS	90 MINUTE BATTERY BACK-UP
EX2	SURE-LITES	APXH7 SERIES - WHITE		EMERGENCY EXIT SIGN	90 MINUTE BATTERY BACK-UP
EM2	SURE-LITES	APWR SERIES - WHITE		EMERGENCY REMOTE HEAD - LED	90 MINUTE BATTERY BACK-UP

OCCUPANCY SENSOR SCHEDULE					
DESCRIPTION	SYMBOL	WATTAGE/ VOLTAGE	UNOBSTRUCTED RATED COVERAGE	MOUNTING	TIME DELAY
PIR	CS	DW-100	300 SF	WALL	30 MIN
PIR	CS	CMR-6	360' / 400 SF	CEILING/BOX	ADJUSTABLE

NOTES:
1. SENSORS REQUIRE POWER PACK (INSTALL IN ACCESSIBLE LOCATION)
2. SWITCH MOUNTING BRACKET INCLUDED.
APPROVED ALTERNATE: JAMES SEYMOUR, LEVITON
* ALTERNATE MANUFACTURERS SHALL SUBMIT SHOP DRAWINGS INCLUDING SCALED FLOOR PLANS OF DEVICE LOCATIONS AND CUT SHEETS OF DEVICES.

ALL FIXTURES TO BE PROVIDED AND INSTALLED BY GC



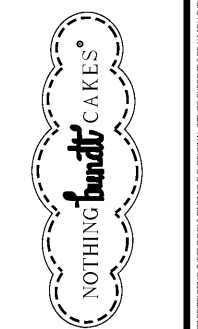
2 | DETAIL - SWITCH BANK
NTS

Order Plans

JIM ELLIS
MELETTIO ELECTRICAL
SUPPLY CO.
P.O. BOX 540816
10930
HARRY HINES BLVD.
DALLAS, TEXAS 75220
972.559.6943
JELLIS@MELETTIO.COM

04.11.18 PERMIT SUBMIT
04.04.18 OWNER REVIEW

NO DATE REMARKS
REVISIONS



CREEKSIDE PLAZA
4110 N. MT. JULIET RD.
MT. JULIET, TN 37122

PROJECT NO: 2018.0044
DATE: 04.11.18

E1.0
ELECTRICAL LIGHTING PLAN

CHECKED: MFG DRAWN: SLB

COPYRIGHT © 2016 INTERPLAN LLC. RESERVE COPYRIGHT & OTHER RIGHTS RESTRICTING THESE DOCUMENTS TO THE ORIGINAL USE OR PURPOSE FOR WHICH THEY WERE PREPARED. REPRODUCTIONS, CHANGES OR ASSIGNMENTS ARE PROHIBITED.