

David G. Boyce
Digitally signed by David G. Boyce
Date: 2018.04.11 14:22:53 -0400

LIGHTING LEGEND

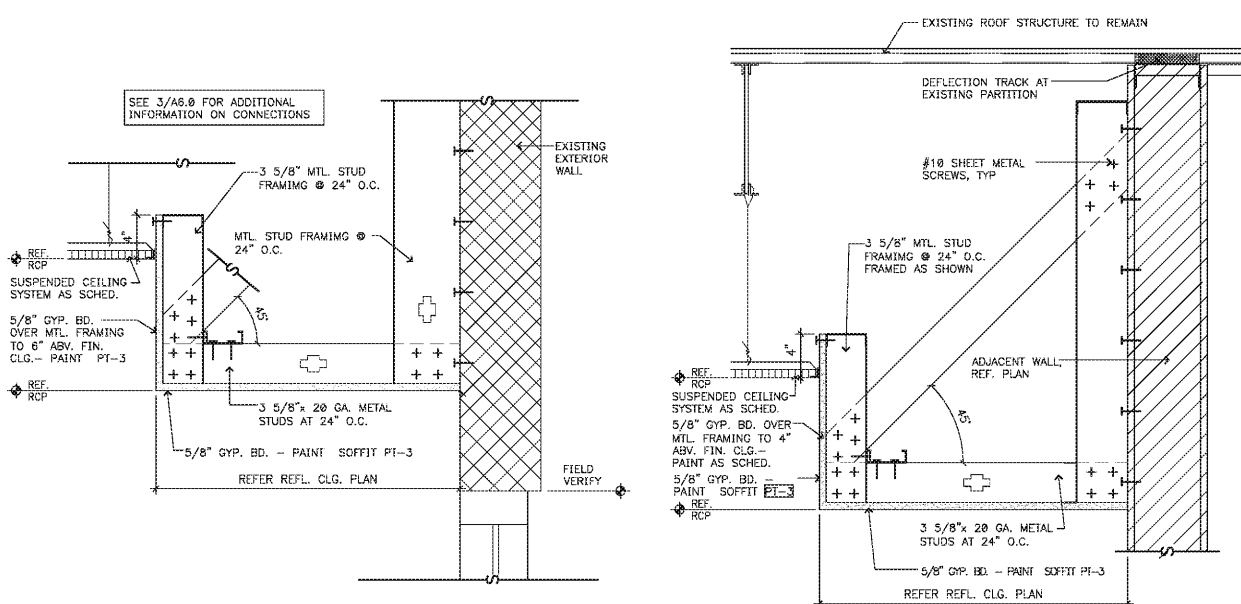
MARK	MANUF.	ITEM #	DESCRIPTION	REMARKS
[Symbol]	QUALITY LIGHT SOURCE	LPL2405835E	2'x4' FLAT LED PANELS - SEE ELEC.	
[Symbol]	METALUX	22CZ-LD4-24-UNV-LB35-CD1-U	2'x2' LAY-IN LIGHT TROFFER - SEE ELEC	ACRYLIC DIRECT / INDIRECT
[Symbol]	HALO	H7581CAT RLS90 3000K	6" LED RECESSED RETROFIT MODULE-TRIM CAN LIGHT	
[Symbol]	QUALITY LIGHT SOURCE	LPL2405835E	2'x4' FLAT LED PANELS - SEE ELEC.	PROVIDE ON SEPARATE SHEET FOR NIGHT LIGHTS (24-HOUR)
[Symbol]	JUNO	R8WH TRACK / R23WH LIVE END / R781-WH HEAD	WHITE WALL WASHER TRACK LIGHTING FIXTURE - SEE ELEC	N.E.C. COORDINATE 45W PER FOOT ENERGY CODE 45W PER FOOT
[Symbol]	TECH LIGHTING	FAB PENDANT #700MP-FAB-A-S-LD5830	FABRIC SHADE PENDANT LIGHTING ABOVE P.O.S. COUNTERS, SYSTEM FREEZER, COOLERS, ALMOND, FINISH WITH NICKEL	INSTALL FIXTURES W/ BOTTOM AT 6'-0" F.F. - SCAM OF FABRIC SHADE TO FACE MENU BOARD.
[Symbol]	KITCHLER	42634CH PARKER POINT WALL SCONCE, CHROME	WALL SCONCE, ELEC. FIN. CHROME	WALL SCONCE W/ OPTICAL CRYSTAL AND ORGANZA FABRIC SHADE - INSTALL FIXTURES W/ CENTER AT 5'-3" A.F.F.
[Symbol]	SURE-LITES	APC/APC SERIES	COMMERCIAL EMERGENCY EXIT LAMP W/ (2) LED EMERGENCY FLOOD LAMPS	90 MINUTE BATTERY BACK-UP
[Symbol]	SURE-LITES	CU2	EMERGENCY LIGHT W/ (2) LED EMERGENCY FLOOD LAMPS	90 MINUTE BATTERY BACK-UP
[Symbol]	NUTONE	EXHAUST FAN	EXHAUST FAN	EXISTING EXHAUST FAN TO REMAIN - VERIFY IN PROPER WORKING ORDER
[Symbol]	BY OWNER	BY OWNER	CEILING SPEAKER	G.C. ELECTRICIAN TO INSTALL OWNER PROVIDED CEILING MOUNTED SPEAKERS AND PULL 2 CONDUCTOR 14 GAUGE SPEAKER WIRE W/ 7'-0" PIGTAIL AND TERMINATE AT MEDIA PLAYER AND AMP MUSIC SYSTEM. INSTALLATION OF EQUIPMENT BY OTHERS.
[Symbol]	EXISTING	EXISTING	EXISTING FIXTURE TO BE RELOCATED	FIXTURE TO BE RELOCATED. G.C. TO RELAMP AND REPLACE WITH SIMILAR FIXTURE IF UNABLE TO REUSE EXISTING.

* SEE TO ORDER AND INSTALL FIXTURES FROM LISTED VENDOR CONTACT.
JIM ELLIS
MELETO ELECTRICAL SUPPLY CO.
P.O. BOX 540816 10930
HARRY HINES BLVD.
DALLAS, TEXAS 75220
972.559.6943
JELLIS@MELETO.COM

CEILING MATERIAL LEGEND

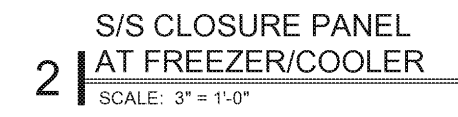
CEILING:
 (ACT-1) VINYL CLAD GYP. BD. CEILING TILES: "ARMSTRONG" VINYL CLAD #8P670, 2'x4'x5/8", VINYL CLAD, CEILING TILES W/ 15/16" PRELUDE XL "T" BAR GRID, COLOR - WHITE.
 (ACT-2) ACOUSTIC CEILING TILE: "ARMSTRONG" LEDGES 1, SINGLE RAISED PANEL #8013, 2'x2'x5/8" LAY-IN TILE, FLUSH REGULAR, NON-PERFORATED W/ 15/16" PRELUDE "T" BAR GRID, COLOR - WHITE. (THIS PRODUCT IS A LONG LEAD TIME ITEM)
 (GYP) GYPSUM BOARD: 5/8" TYPE "X" GYPSUM BOARD, PAINT, REF. RCP SECTIONS.
 ARMSTRONG NATIONAL ACCOUNT PROGRAM - FOR PRICING PLEASE CONTACT ARMSTRONG NATIONAL ACCOUNT CUSTOMER SERVICE 1.800.442.4212. ACCOUNT QUESTIONS, PLEASE CONTACT DEBORAH PICKENS (480.695.9053) OR DLPICKENS@ARMSTRONGCEILING.COM

ALLOW 1 1/4" PERIMETER EDGE FRAMING FOR ACT-2. HOMESTYLE SINGLE RAISED PANEL. CUT LEAST AMOUNT OF CEILING TILES AS POSSIBLE. ADJUST SOFFIT ACCORDINGLY.

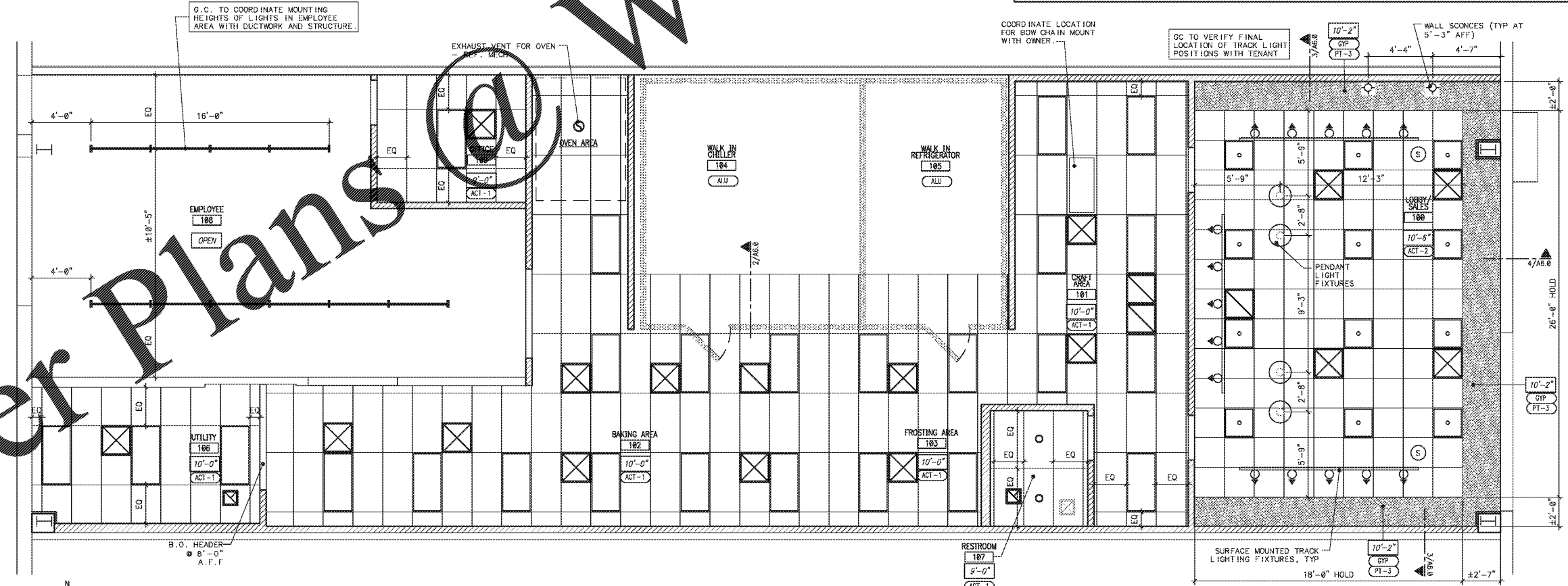


4 HEAD DETAIL
SCALE: 1 1/2" = 1'-0"

3 SOFFIT SECTION
SCALE: 1 1/2" = 1'-0"



2 S/S CLOSURE PANEL AT FREEZER/COOLER
SCALE: 3" = 1'-0"

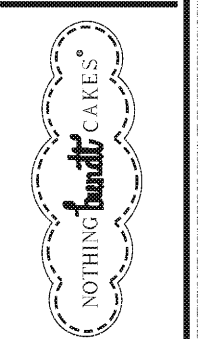


1 REFLECTED CEILING PLAN
SCALE: 1/4" = 1'-0"

Order Plans

WWW.DIYDINING.COM

04.11.18 PERMIT SUBMIT
04.04.18 OWNER REVIEW



CREEKSIDE PLAZA
4110 N MT. JULIET RD.
MT. JULIET, TN 37122

PROJECT NO: 2018.0044
DATE: 2018.04.11

A6.0
REFLECTED CEILING PLAN

CHECKED: MCP DRAWN: AB/KE