

David G. Boyce
Digitally signed by David G. Boyce
Date: 2018.04.11 14:17:36 -0400

DOOR SCHEDULE

MARK	SIZE	DOOR	FRAME	HDWR.	DETAIL	STATUS	REMARKS
*1	PR. 3'-0" x 7'-0" x 1-3/4"	TYPE A	ALUMINUM	SET 1	-	EXISTING	REF. NOTE 2,5,6
**2	3'-0" x 7'-0" (FRAMED OPENING)	TYPE C	METAL	SET 5	2/A1.1	NEW	42" TALL LOUVERED DOOR
**3	3'-0" x 7'-0" (FRAMED OPENING)	TYPE C	METAL	SET 5	2/A1.1	NEW	42" TALL LOUVERED DOOR
4	3'-0" x 7'-0" x 1-3/4"	TYPE B	METAL	SET 2	1/A1.1	NEW	REF. NOTE 4
5	3'-0" x 7'-0" x 1-3/4"	TYPE B	METAL	SET 3	2/A1.1	NEW	
*6	PR. 3'-0" x 7'-0" x 1-3/4"	TYPE E	METAL	EXIST.	-	EXISTING	EXISTING TO REMAIN, G.C. TO CONFIRM HARDWARE DOOR TO REMAIN UNLOCKED IN PARTIAL OPEN POSITION.
*7	4'-0" x 7'-0" x 1-3/4"	TYPE D	METAL	SET 4	-	EXISTING	REF. NOTE 13 - ADD PEEL-HOLE

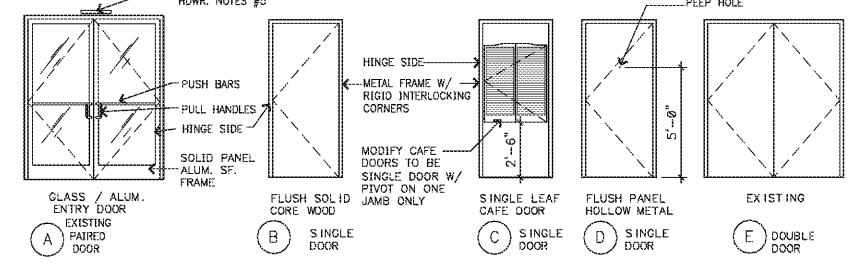
HARDWARE SCHEDULE

SET 1:	SET 2:	SET 4:
HINGES: TOP, STANDARD INTERMEDIATE AND BOTTOM OFFSET PIVOT HINGES. COLOR TO MATCH EXISTING PUSH/PULL: STD. 1" DIA. ROD CLOSER: CORBIN-RUSSWIN DC2200 x 693 W/- MAX. 8.5 lb. PULL OR APPROVED EQUAL (SAT IN ALL FIN.) LOCKS (ACTIVE LEAF): ADAMS-RITE M5100S DEADLOCK W/ DEL. CYLINDER THUMB LOCK INSIDE THRESHOLD: MFG'S STD 4" WIDE DOOR OF STIP. FIN. SADDLE THRESHOLD MFG'S DOOR BOTTOM SWEEP AND WEATHER STRIP (SP, S, SIDES, & ADJ. GAL. ONE STAGE) WITH L.C. CONTROLLER) AUTOMATICALLY RETRACTING THRESHOLD & HEADER BOLTS UPON LOCKING ENTRY UNDER BY KALNEER OR APPROVED	HINGES: (1 1/2) PAIR 4 1/2" x 4 1/2" BB BUTT HINGES - "HAGER" 1279 PRIVACY LOCKS/LEVER HDWR. "SCHLAGE" AL40S-SAT DOOR STOP GLYNN-JOHNSON #80C WALL BUMPER CLOSER: "LON" SURFACE MTD. SLIM LINE CLOSER W/ MAX. 10 lb PULL LOCKS (ACTIVE LEAF): (3) GLYNN-JOHNSON RUBBER SILENCERS	HINGES: (1 1/2) PAIR 2" x 4 1/2" BB HINGES WITH NON-REMOVABLE PIN - "HAGER" 1279 CLOSER LCN 1460 SURFACE MTD. SLIM LINE CLOSER W/- MAX. 5 lb PULL DOOR STOP EXTRUDED ALUMINUM WEATHERSTRIP: "HAGER" 8735-AL GASKET SET & "HAGER" 7505-AL SILL SWEEP SILENCERS EXIT DEVICE/PANIC DEVICE DETEX #V40xB W/ CRASH BAR WITH ENTRY TRIM OR EQ.
SET 3: HINGES: (1 1/2) PAIR 4 1/2" x 4 1/2" BB BUTT HINGES - "HAGER" 1279 DET. LOCKS/LEVER HDWR. "SCHLAGE" AL60P-SAT DOOR STOP GLYNN-JOHNSON #80C WALL BUMPER SILENCERS (3) GLYNN-JOHNSON #GJ64. RUBBER SILENCERS	SET 5: HINGES: (1 1/2) PAIR 4 1/2" x 4 1/2" BB BUTT HINGES - "HAGER" 1279 DET. LOCKS/LEVER HDWR. "SCHLAGE" AL60P-SAT DOOR STOP GLYNN-JOHNSON #80C WALL BUMPER SILENCERS (3) GLYNN-JOHNSON #GJ64. RUBBER SILENCERS	SET 6: HINGES: (1 1/2) PAIR 4 1/2" x 4 1/2" BB BUTT HINGES - "HAGER" 1279 DET. LOCKS/LEVER HDWR. "SCHLAGE" AL60P-SAT DOOR STOP GLYNN-JOHNSON #80C WALL BUMPER SILENCERS (3) GLYNN-JOHNSON #GJ64. RUBBER SILENCERS

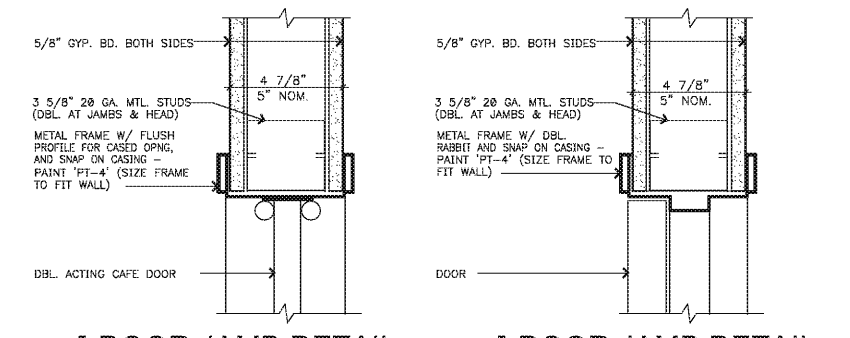
DOOR / SIGNAGE / HARDWARE NOTES

1. ALL HARDWARE FINISH SHALL BE US626 SATIN ALUMINUM FINISH EXCEPT FOR STOREFRONT (MATCH EXISTING)
2. ALL LOCKSETS SHALL HAVE STANDARD 2 3/4" BASKET AND 1 1/8" x 2 1/4" STRIKE PLATES. DEAD BOLTS SHALL BE 1" THROW. ALL ENTRY DOORS SHALL HAVE LOCK CYLINDERS W/ THUMB LATCH ON INSIDE. PROVIDED AND INSTALLED BY G.C.
3. G.C. TO SUPPLY TENANT WITH A TOTAL OF (3) KEYS FOR ALL KEYED HARDWARE SETS.
4. SIGNS SHALL BE INSTALLED ON WALL ADJACENT TO TOILET ROOM DOOR COMPLYING WITH ALL FEDERAL STATE AND LOCAL REGULATIONS, INDICATING USE (SEX), AS WELL AS SYMBOL OF ACCESSIBILITY (REF. ACCESS - DTL. SHT. A4.0)
5. G.C. TO PROVIDE READILY VISIBLE DURABLE SIGN POSTED ON EGRESS SIDE ON OR ADJACENT TO DOOR STATING, "THIS DOOR TO REMAIN UNLOCKED WHEN BUILDING IS OCCUPIED". SIGN SHALL BE IN LETTERS 1 INCH HIGH ON CONTRASTING BACKGROUND AT ENTRANCE.
6. WHERE NEW STOREFRONT CLASS DOORS ARE INSTALLED OR EXISTING STOREFRONT DOORS ARE TO BE RELOCATED, G.C. SHALL INSTALL CODE REQ'D. TEMPERED SIDELITE WITH SYLES & COLOR TO MATCH BUILDING STANDARDS.
7. SUBSTITUTIONS WILL BE ACCEPTED FOR ANY DOOR HARDWARE BY PRIOR OWNER APPROVAL ONLY.
8. ALL NEW EXT. H.M. DOORS AND FRAMES TO BE BY "AMMCO, CURRIES OR REPUBLIC" (OR EQUAL). DOORS TO BE 18 GA. FACTORY PRIMED, FRAMES TO BE 18 GA. FACTORY PRIMED. PAINT INTERIOR SURFACE PT-4, EXT. TO MATCH BLDG. STDS.
9. ALL INTERIOR WOOD DOORS (J.N.O.) SHALL BE BY HALEY ARCHITECTURAL DOORS (OR EQUAL), SOLID PARTICLE BOARD CORE - FINISH PAINT PT-4.
10. INTERIOR HOLLOW METAL DOOR FRAMES SHALL BE 18 GA. COLD ROLLED STEEL, KNOCK DOWN TYPE WITH RESILIENT BUMPERS. FRAME SHALL BE FACTORY PRIMED THEN PAINTED PT-4 (ALKYD). WELD TO EACH FRAME. 'C' SERIES FRAME W/ SNAP ON ALUM. CASING, BY TIMELY OR EQ.
11. ALL DOORS SHALL COMPLY TO ANSI A117.1, 4.13.9, LATEST ED.
12. DOOR CLOSERS SHALL TAKE AT LEAST 3 SECONDS TO MOVE FROM 70° TO 3° FROM LATCH
13. ALL DOOR HARDWARE IS EITHER PANIC BAR OR LEVER HARDWARE, TO MEET ALL APPLICABLE ACCESSIBILITY CODES.
14. OMISSIONS FROM THE SCHEDULED HARDWARE, WHEN REQUIRED FOR A COMPLETE INSTALLATION, SHALL BE INCLUDED. DIRECT ALL INQUIRIES TO THE ARCHITECT.
15. "EMPLOYEES MUST WASH HANDS BEFORE RETURNING TO WORK" SIGNAGE MUST BE POSTED AT ALL HANDSINKS.
16. ALL EXISTING DOORS AND DOOR FRAMES TO REMAIN TO BE REFINISHED AND PAINTED TO MATCH PT-4.

DOOR TYPES



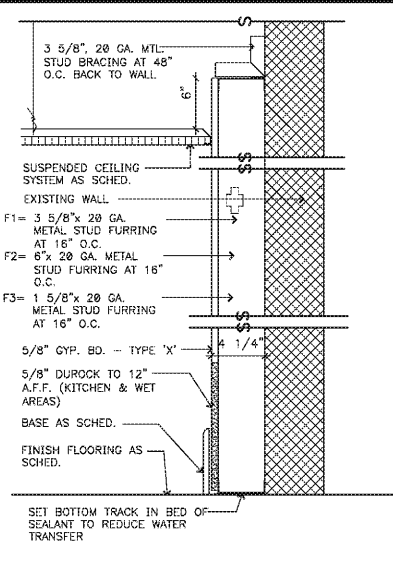
DOOR SCHEDULES / NOTES / TYPES



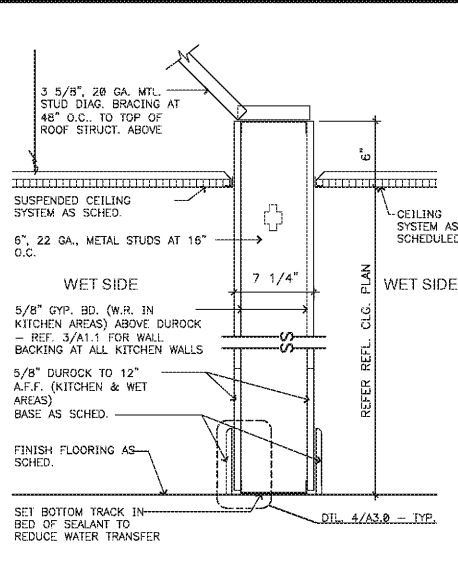
2 | DOOR JAMB DETAIL | SCALE: 3" = 1'-0"

1 | DOOR JAMB DETAIL | SCALE: 3" = 1'-0"

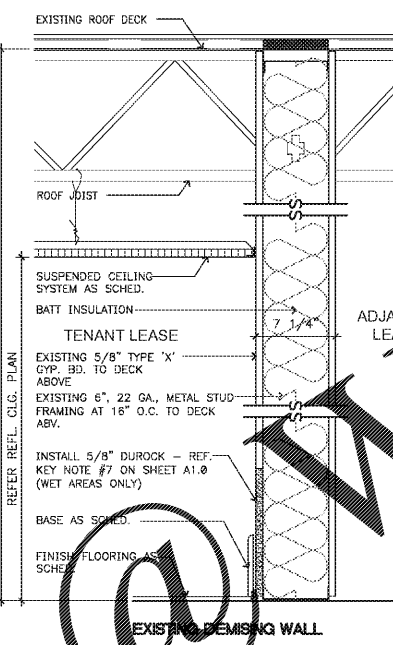
DOOR DETAILS



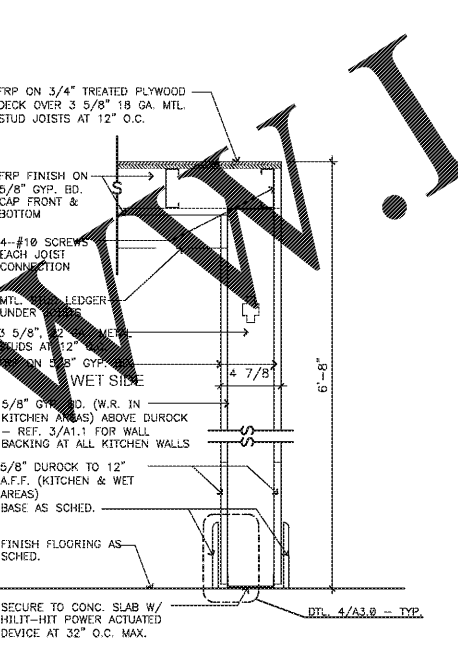
F | PARTITION TYPE F | SCALE: 1-1/2" = 1'-0"



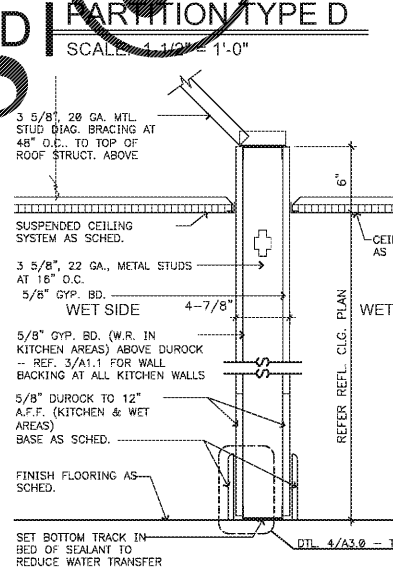
E | PARTITION TYPE E | SCALE: 1-1/2" = 1'-0"



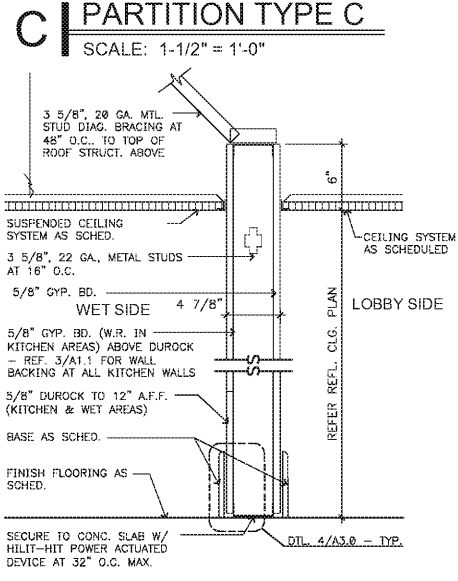
D | PARTITION TYPE D | SCALE: 1-1/2" = 1'-0"



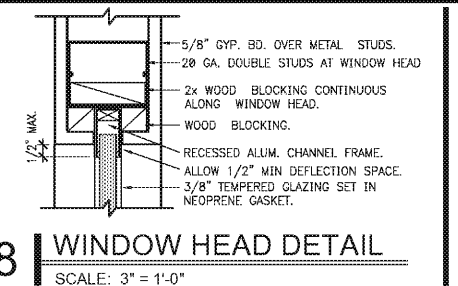
C | PARTITION TYPE C | SCALE: 1-1/2" = 1'-0"



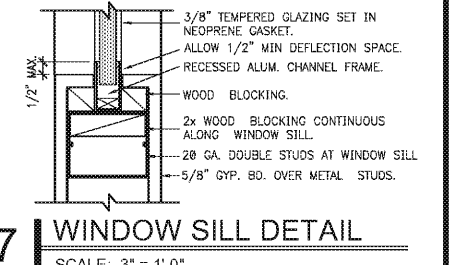
B | PARTITION TYPE B | SCALE: 1-1/2" = 1'-0"



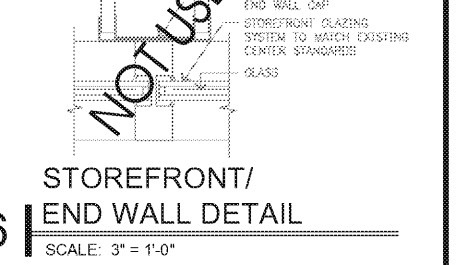
A | PARTITION TYPE A | SCALE: 1-1/2" = 1'-0"



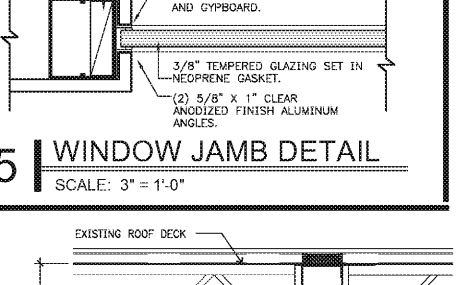
8 | WINDOW HEAD DETAIL | SCALE: 3" = 1'-0"



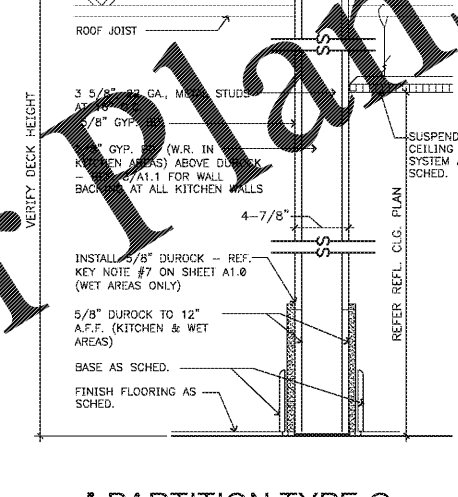
7 | WINDOW SILL DETAIL | SCALE: 3" = 1'-0"



6 | STOREFRONT/ END WALL DETAIL | SCALE: 3" = 1'-0"

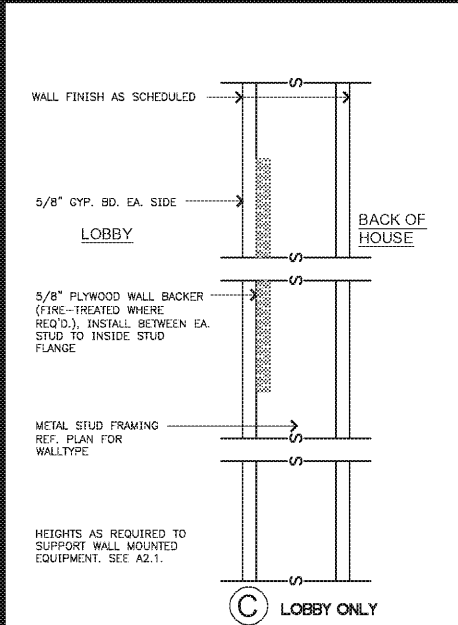


5 | WINDOW JAMB DETAIL | SCALE: 3" = 1'-0"

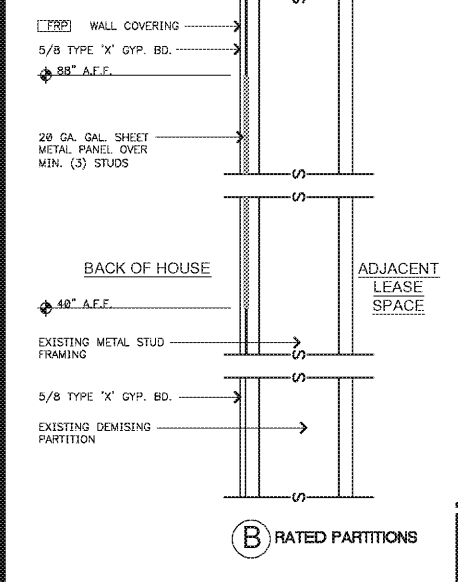


G | PARTITION TYPE G | SCALE: 1-1/2" = 1'-0"

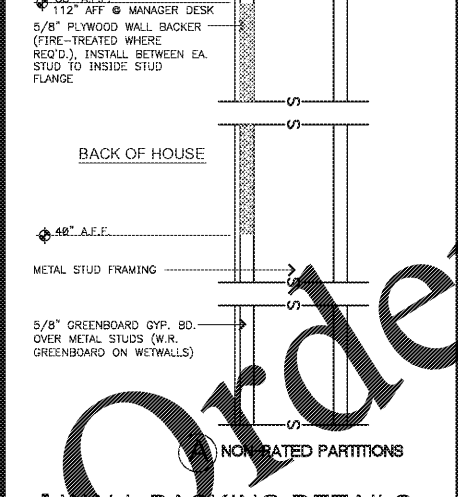
WALL PARTITION TYPES



3 | WALL BACKING DETAILS | SCALE: 3" = 1'-0"



3 | WALL BACKING DETAILS | SCALE: 3" = 1'-0"



3 | WALL BACKING DETAILS | SCALE: 3" = 1'-0"

WALL BACKING DETAILS

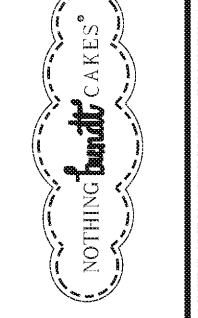
WALL PARTITION TYPES

WALL BACKING DETAILS

Order Plans @ www.interplans.com

04.11.18 PERMIT SUBMIT
04.04.18 OWNER REVIEW

NO DATE REMARKS
REVISIONS



CREEKSIDE PLAZA
4110 N. MT. JULIET RD.
MT. JULIET, TN 37122

PROJECT NO: 2018.0044
DATE: 2018.04.11

A1.1
DOOR SCHEDULE, WALL
SECTIONS, & MISC DETAILS

CHECKED: KCP DRAWN: ABKE