

Owner:
Georgetown County
716 Prince Street
Georgetown, SC 29442

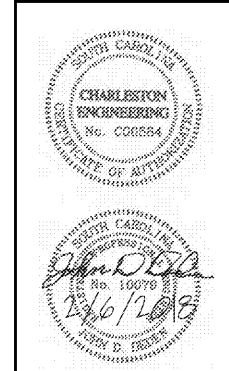
SGA ARCHITECTURE
ARCHITECTURAL FIRM
Pawleys Island / Charleston / GREENVILLE
8243 Ocean Hwy., / PO Box 1859
Pawleys Island, SC 29585
Phone: 843.237.2421 / Fax: 843.237.1992
www.SGAarchitecture.com

Civil Consultant:
ETS
ENGINEERING AND TECHNICAL
SERVICES, INC.
CONSULTING ENGINEERS
58 Colletonville Lane
P.O. Box 2392, 29404
Phone: (843) 237-3302 Fax: (843) 237-2269

MEP Consultant:
Charleston Engineering
123 B. Wagon Wheel Dr.
Charleston, SC 29412
843-762-4242
Mechanical, Plumbing & Electrical

Structural Consultant:
WEATHERLY STRUCTURAL ENGINEERS
100 West Bay Blvd. & 10th Ave. S.E., Suite 100, Marietta, GA 30067

Irrigation Consultant:



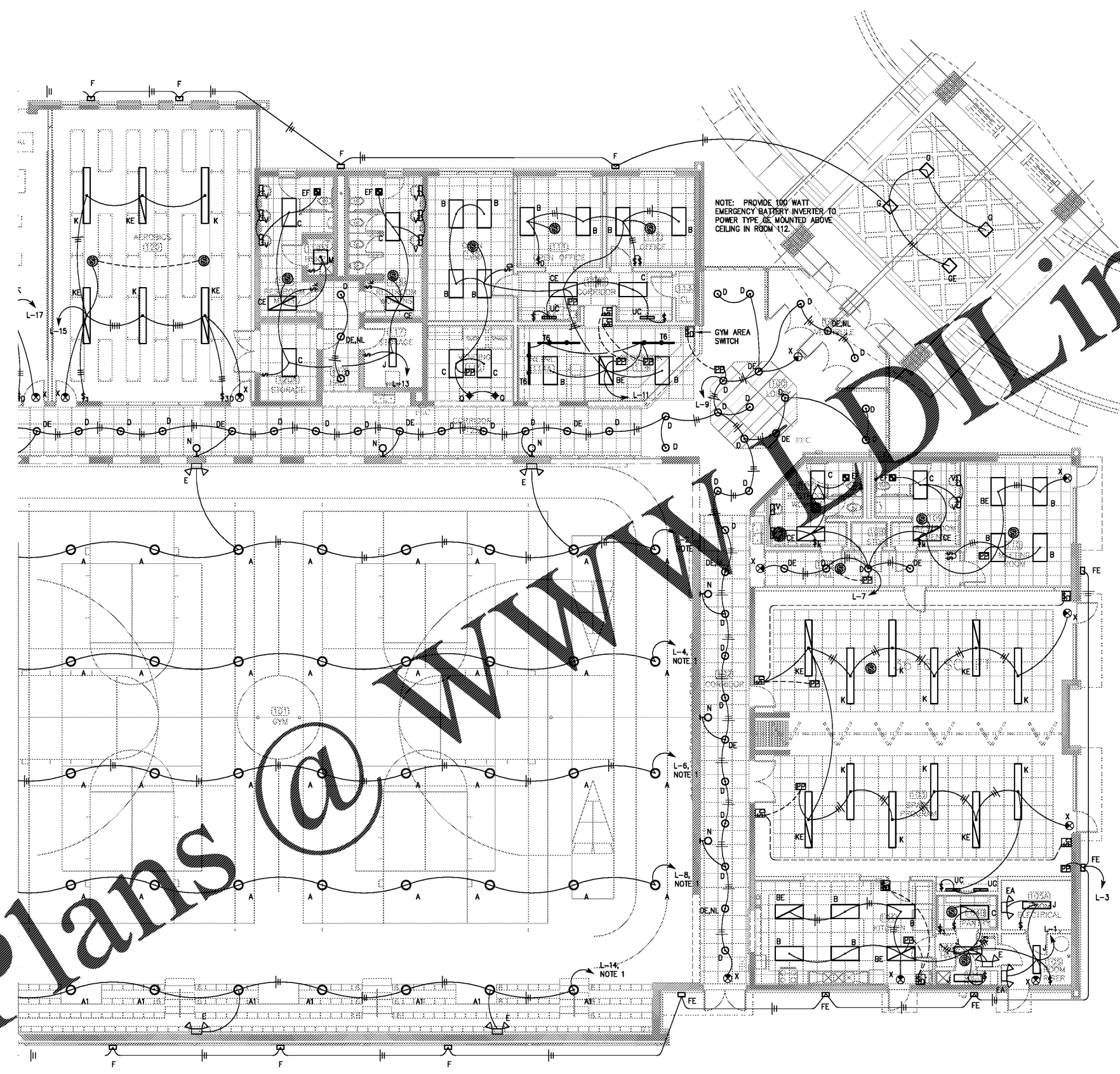
MEMBERS OF
THE AMERICAN INSTITUTE OF ARCHITECTS
COPYRIGHT 2018. ALL RIGHTS RESERVED.
PRINTED OR ELECTRONIC DRAWINGS AND
DOCUMENTATION MAY NOT BE REPRODUCED
IN ANY FORM WITHOUT WRITTEN PERMISSION
FROM SGA ARCHITECTURE

Job Number: 1788
Date: 2/6/18
Drawn by: HOLSBERG
Checked by: DEEDEN

Notes:
BIDDING DOCUMENTS
Not for Construction

Revisions:

1ST FLOOR
LIGHTING PLAN
E111



NOTE: PROVIDE 100 WATT
EMERGENCY BATTERY INVERTER TO
POWER TYPE GE MOUNTED ABOVE
CEILING IN ROOM 112.

GYM AREA
SWITCH

L-4
NOTE

L-6
NOTE

L-8
NOTE

L-14
NOTE 1

LEGEND

- ☐ QUAD RECEPTACLE
- ☐ DUPLEX RECEPTACLE 6" ABOVE COUNTERTOP
- ☐ DUPLEX RECEPTACLE
- Y TELEVISION OUTLET, MOUNTING BRACKET BY OWNER
- [H] MAGNETIC FIRE ALARM HOLD DEVICE
- [S] DUCT SMOKE DETECTOR
- [S] SMOKE DETECTOR
- [S] SMOKE DETECTOR
- [S] FIRE ALARM PULL STATION
- [S] FIRE ALARM STROBE
- [S] FIRE ALARM HORN/STROBE
- 3 3 WAY SWITCH; 20 AMP, 277 VOLT
- 1 SINGLE POLE SWITCH; 20 AMP, 277 VOLT
- [S] DIMMER SWITCH
- [S] DIGITAL SWITCH
- [S] DIMMER DIGITAL SWITCH
- ☐ KEYED SWITCH
- [S] OCCUPANCY SENSOR SWITCH
- [S] DIGITAL ADDRESSABLE POWER PACK

IN 1/2" CONDUIT, PROVIDE MIN. #12 GREEN
GROUND IN ALL CONDUIT. #— INDICATES
HOMERUN TO PANEL. NO MARKS INDICATE (2)#12,
#12 GROUND INDICATES NUMBER OF #12
HOT OR SWITCH LEGS; ARROW CONDUCTORS IN
CONDUIT. / INDICATES #12 NEUTRAL
CONDUCTOR.

LIGHTING FIXTURES; SEE SCHEDULE

- [S] EXHAUST FAN
- [S] FIRE ALARM CONTROL PANEL
- [S] WATER HEATER
- [S] INSTANTANEOUS WATER HEATER
- [S] INDICATES WATER PROOF COVER
- [S] INDICATES "GROUND FAULT INTERRUPTER"
- [S] WIRE FIXTURE FOR NIGHT LIGHT

NOTES

NOTE 1 HOMERUN VIA LIGHTING POWER
PACK MOUNTED IN ELECTRICAL
ROOM. PROVIDE CONTROL WIRES
TO ALL GYM LIGHTING FIXTURE FOR
DIMMING.

ELECTRICAL NOTES

1. PROVIDE FLAGPOLE LIGHTING. PROVIDE (2) TYPE
"L" FIXTURES AT FLAG POLE. HOMERUN 250'
UNDERGROUND CIRCUIT OF (2)#10,#10G IN 1"
CONDUIT VIA POWER PACK IN ELECTRICAL ROOM
TO PA-43.
2. PROVIDE EXTERIOR SIGN LIGHTING. PROVIDE (2)
TYPE "P" FIXTURES AT EXTERIOR SIGN.
HOMERUN 250' UNDERGROUND CIRCUIT OF
(2)#10,#10G IN 1" CONDUIT VIA POWER PACK IN
ELECTRICAL ROOM TO PA-41.

Order Plans @ www.dline.com