

Owner:  
Georgetown County  
716 Prince Street  
Georgetown, SC 29442

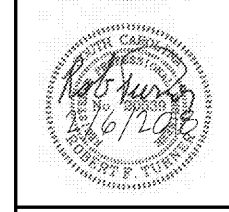
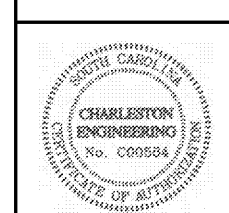
SGA ARCHITECTURE  
Pawleys Island / Charleston / GREENVILLE  
8243 Ocean Hwy. / PO Box 1859  
Pawleys Island, SC 29585  
Phone: 843.237.2421 / Fax: 843.237.1992  
www.sgaarchitecture.com

Civil Consultant:  
**ETS**  
ENGINEERING AND TECHNICAL  
SERVICES, INC.  
CONSULTING ENGINEERS  
58 Columbia Lane  
P.O. Box 2192, 29545  
Phone: (843) 237-3092 Fax: (843) 237-2269

MEP Consultant:  
**Charleston Engineering**  
225 B. Wiggins Creek Dr.  
Charleston, SC 29412  
843-762-4242  
Mechanical, Plumbing & Electrical

Structural Consultant:  
**WEATHERLY STRUCTURAL ENGINEERS**  
100 South Main Street, Suite 100, Charleston, SC

Irrigation Consultant:



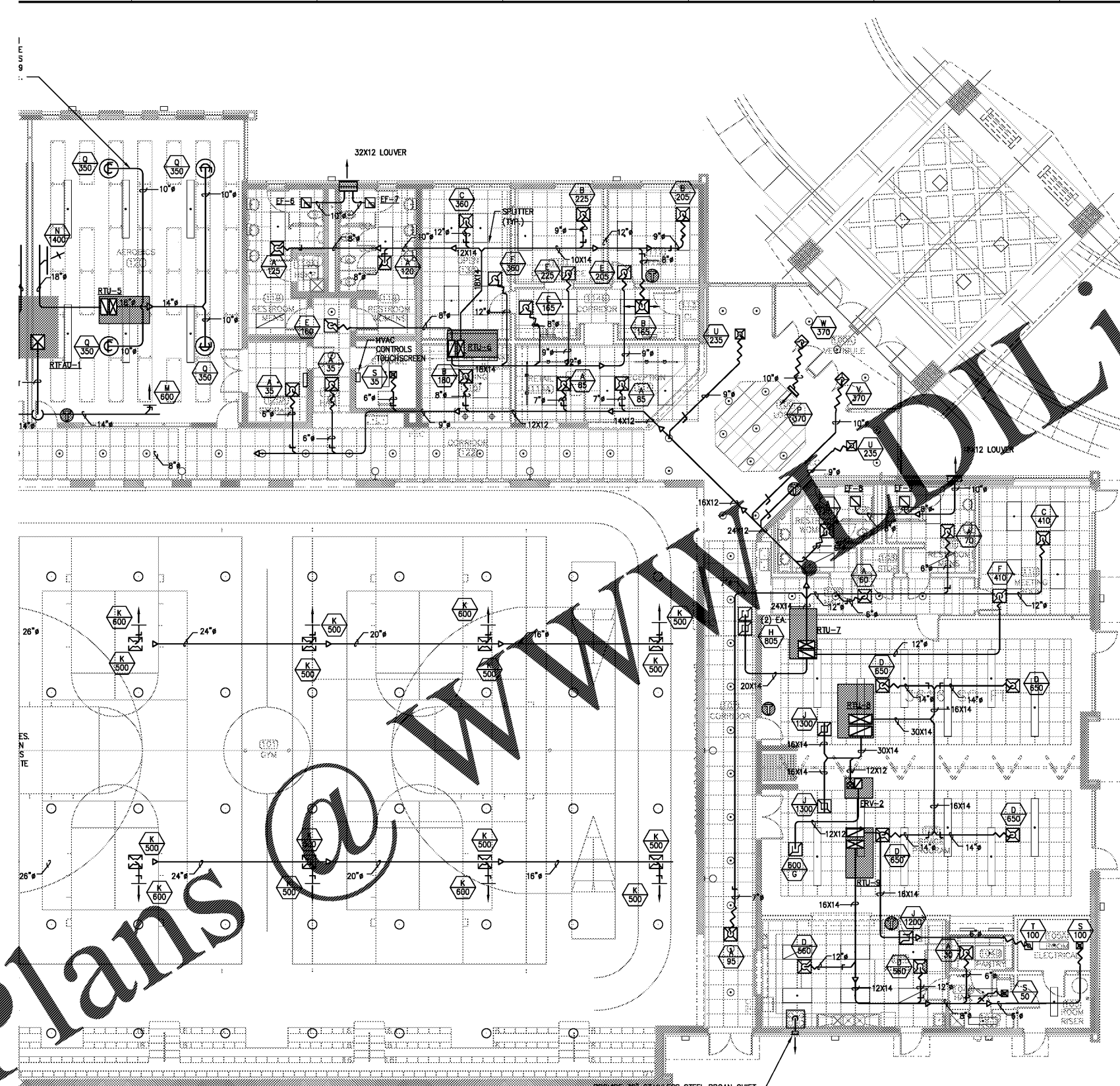
MEMBERS OF  
THE AMERICAN INSTITUTE OF ARCHITECTS  
COPYRIGHT 2018. ALL RIGHTS RESERVED.  
PRINTED OR ELECTRONIC DRAWINGS AND  
DOCUMENTATION MAY NOT BE REPRODUCED  
IN ANY FORM WITHOUT WRITTEN PERMISSION  
FROM SGA ARCHITECTURE

Job Number: 1788  
Date: 2/6/18  
Drawn by: TURNER  
Checked by: TURNER

Notes:  
**BIDDING DOCUMENTS**  
Not for Construction

Revisions:

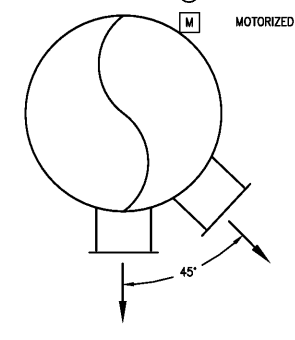
1ST FLOOR HVAC  
PLAN  
**M111**



**LEGEND**

| SINGLE LINE | DOUBLE LINE |   |
|-------------|-------------|---|
|             |             | RIGID RECTANGULAR DUCT  |
|             |             | RIGID ROUND DUCT  |
|             |             | FLEX DUCT   |
|             |             | STANDARD BRANCH (CONVERGING OR DIVERGING) W/ CENTRIFUGAL BOOT |
|             |             | STANDARD BRANCH (CONVERGING OR DIVERGING) W/ CENTRIFUGAL BOOT |
|             |             | RECTANGULAR INCREASER/DECREASER                               |
|             |             | ROUND INCREASER/DECREASER                                     |
|             |             | RECTANGULAR WYE TURNING VANES                                 |
|             |             | RECTANGULAR TEE ELBOW W/ TURNING VANES                        |
|             |             | ROUND T-FITTING   |
|             |             | RECTANGULAR ELBOW W/ TURNING VANES                            |
|             |             | ROUND/OVAL GORED ELBOW (0 TO 90°)                             |
|             |             | RECTANGULAR TRANSITION  |
|             |             | ROUND TRANSITION  |
|             |             | AIR DISTRIBUTION DEVICE WITH CFM INDICATED                    |
|             |             | SUPPLY  |
|             |             | RETURN/EXHAUST  |
|             |             | THERMOSTAT (4'-0" AFF)  |
|             |             | THERMOSTAT (4'-0" AFF) WITH LOCKING GYM-GRADE COVER           |
|             |             | MANUAL VOLUME DAMPER (BUTTERFLY TYPE)                         |
|             |             | DRAIN PIPING  |
|             |             | CONNECT NEW TO EXISTING                                       |
|             |             | FAU FRESH AIR UNIT  |
|             |             | AHU AIR HANDLING UNIT   |
|             |             | HP HEAT PUMP  |
|             |             | EF EXHAUST FAN  |
|             |             | AFF ABOVE FINISHED FLOOR                                      |
|             |             | FD FIRE DAMPER W/AD   |
|             |             | AD ACCESS DOOR  |
|             |             | RTU ROOF TOP UNIT   |
|             |             | O/H OVERHEAD  |
|             |             | AD ACCESS DOOR  |
|             |             | U/G UNDERGROUND   |
|             |             | DEMOLISH HVAC   |
|             |             | SWITCH  |
|             |             | HUMIDITY SENSOR   |
|             |             | MOTORIZED DAMPER  |

PROVIDE 30" STAINLESS STEEL BROAN QUIET SERIES HOOD. RUN 7" OR FACTORY RECOMMENDED DUCT INSIDE CABINETS TO EXTERIOR WALL. PROVIDE FACTORY DISCHARGE GRILLE. PROVIDE GUARDIAN III FIRE SUPPRESSION SYSTEM WITH ELECTRIC SHUT OFF. COORDINATE CONNECTIONS WITH FIRE ALARM CONTRACTOR. KITCHEN EQUIPMENT VENDOR SHALL INSTALL.



GYM GRILLES DETAIL

Order Plans