

Owner:
Georgetown County
716 Prince Street
Georgetown, SC 29442

SGA ARCHITECTURE

ARCHITECTURE AND PLANNING
LANDSCAPE ARCHITECTURE
Pawleys Island / Charleston / GREENVILLE
6263 Ocean Hwy. / PO Box 1859
Fountain Inland, SC 29555
Phone: 843.237.3421 / Fax: 843.237.1992
www.sgaarchitecture.com

Civil Consultant:
ETS
ENGINEERING AND TECHNICAL
SERVICES, INC.
CONSULTING ENGINEERS
88 Columbia Lane
P.O. Box 250
Pawleys Island, SC 29585
Phone: (843) 237-0522 Fax: (843) 237-2253

MEP Consultant:

Charleston Engineering
123 B Wappoo Creek Dr.
Charleston, SC 29412
843-752-4242
Mechanical, Plumbing & Control

Structural Consultant:

WEATHERLY STRUCTURAL ENGINEERS

Irrigation Consultant:



Corporate Seal



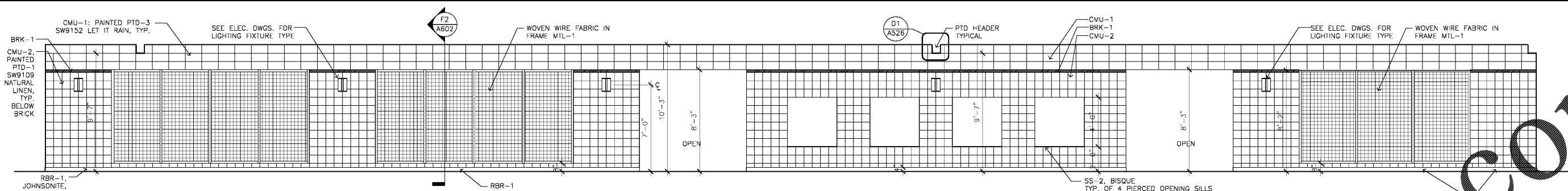
Individual Seal

MEMBERS OF
THE AMERICAN INSTITUTE OF ARCHITECTS
COPYRIGHT © 2018 ALL RIGHTS RESERVED
PRINTED OR ELECTRONIC DRAWINGS AND
DOCUMENTATION MAY NOT BE REPRODUCED
IN ANY FORM WITHOUT WRITTEN PERMISSION
FROM SGA ARCHITECTURE.

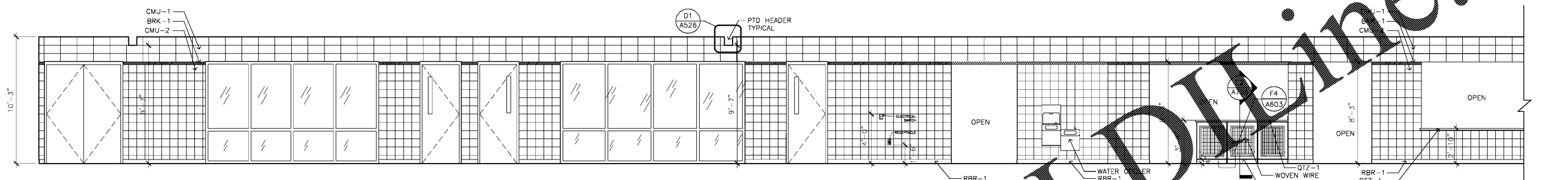
Job Number: 17070
Date: 02/16/18
Drawn by: PW, MR
Checked by: MR

Notes:
BIDDING DOCUMENTS
Not for Construction

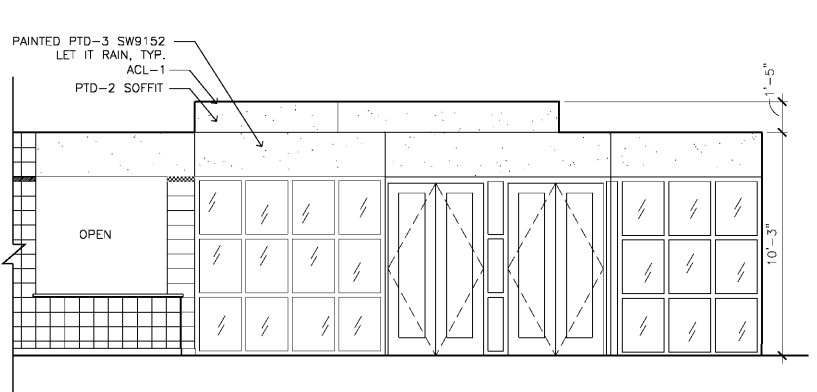
Revisions:



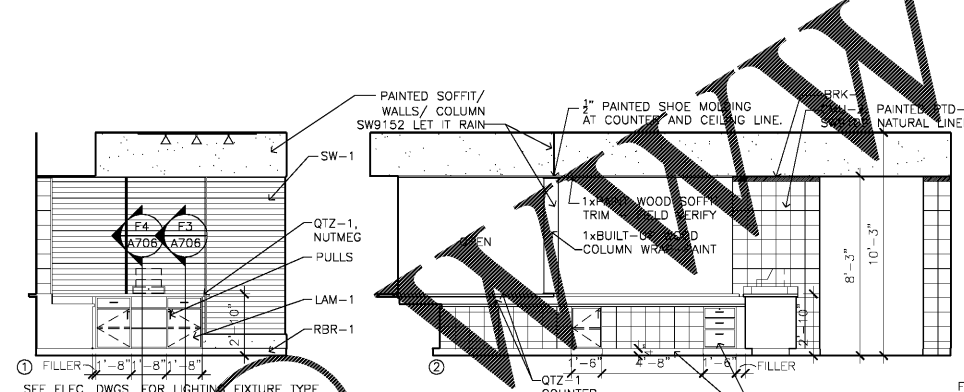
A1 INTERIOR ELEVATION - CORRIDOR 122 FACING GYMNASIUM
1/4"=1'-0"



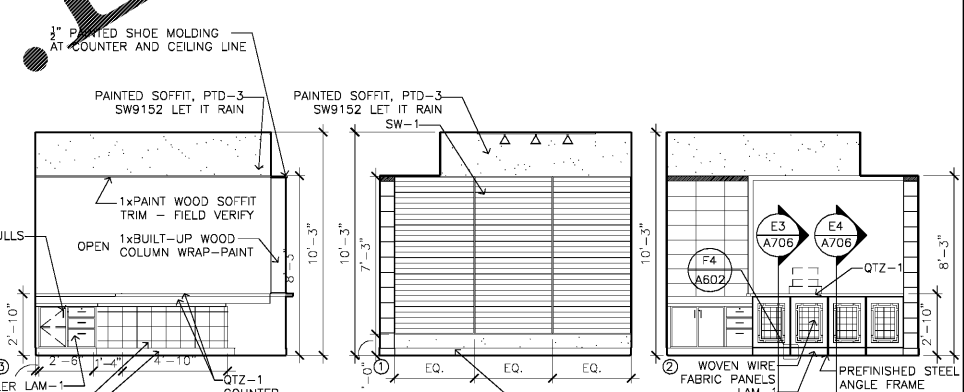
C1 INTERIOR ELEVATION - CORRIDOR
1/4"=1'-0"



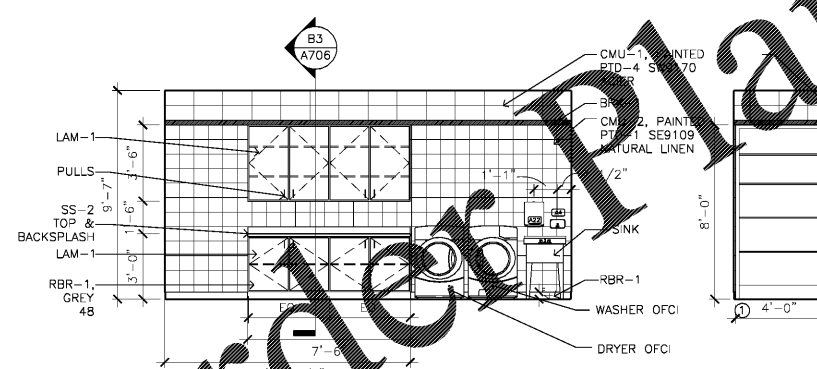
D1 INTERIOR ELEVATION - CORRIDOR/ENTRY
1/4"=1'-0"



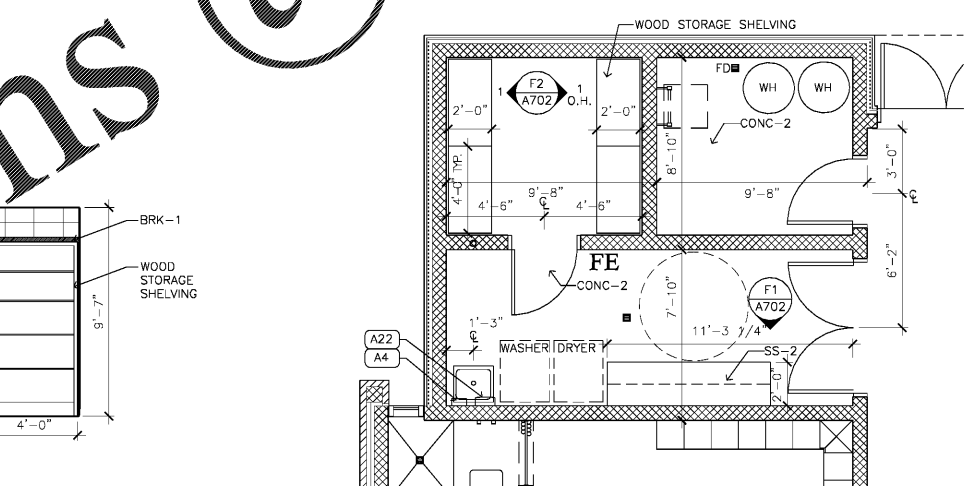
D2 INTERIOR ELEVATIONS - RECEPTION 114
1/4"=1'-0"



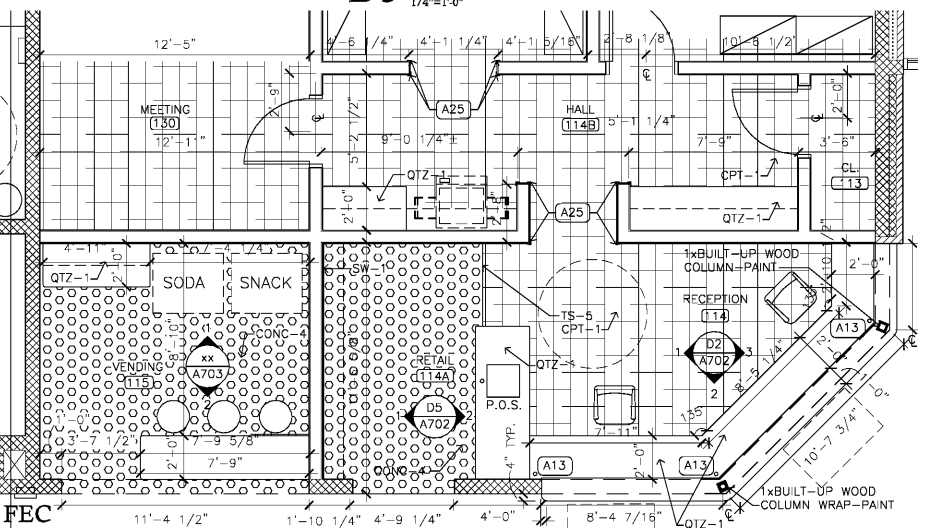
D5 INTERIOR ELEVATIONS - RETAIL 114A
1/4"=1'-0"



F1 INTERIOR ELEVATION - LAUNDRY ROOM 124
1/4"=1'-0"



F2 INT. ELEV. - STORAGE ROOM 124A
1/4"=1'-0"



F3 ENLARGED PLAN - LAUNDRY/STORAGE 124
1/4"=1'-0"

F4 ENLARGED PLAN - RECEPTION/RETAIL
1/4"=1'-0"

NOTES:
1. SEE SHEETS A603 & A604 FOR ROOM FINISH LEGEND & SCHEDULE.
2. ALL COUNTERS RECEIVE PAINT.