

Owner:
Georgetown County
716 Prince Street
Georgetown, SC 29442

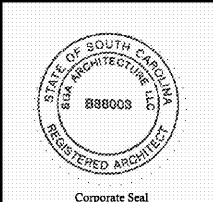
SGA ARCHITECTURE
ARCHITECTURE AND INTERIOR DESIGN
LANDSCAPE ARCHITECTURE
Pawleys Island / Charleston / GREENVILLE
8263 Ocean Hwy. / PO Box 1859
Fenwick Island, SC 29555
Phone: 843.237.3421 / Fax: 843.237.1992
www.SGAarchitecture.com

Civil Consultant:
ETS
ENGINEERING AND TECHNICAL
SERVICES, INC.
CONSULTING ENGINEERS
88 Cartersville Lane
P.O. Box 205
Pawleys Island, SC 29555
Phone: (843) 237-3421 Fax: (843) 237-2853

MEP Consultant:
Charleston Engineering
123 B Wappoo Creek Dr.
Charleston, SC 29412
843-752-4312
Mechanical, Plumbing & Electrical

Structural Consultant:
WEATHERLY STRUCTURAL ENGINEERS
2100 Red Bank Hwy. S.E. Suite 200
Charleston, SC 29405

Irrigation Consultant:



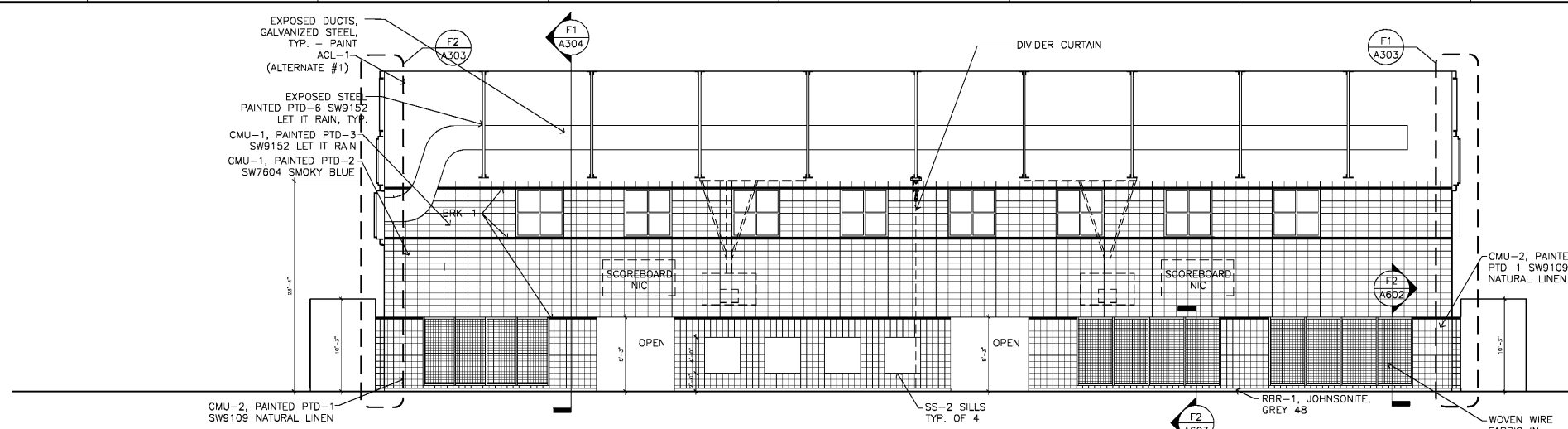
MEMBERS OF
THE AMERICAN INSTITUTE OF ARCHITECTS
COPYRIGHT 2018 ALL RIGHTS RESERVED
PRINTED OR ELECTRONIC DRAWINGS AND
DOCUMENTATION MAY NOT BE REPRODUCED
IN ANY FORM WITHOUT WRITTEN PERMISSION
FROM SGA ARCHITECTURE.

Job Number: 17070
Date: 02/16/18
Drawn by: PW,MR
Checked by: MR

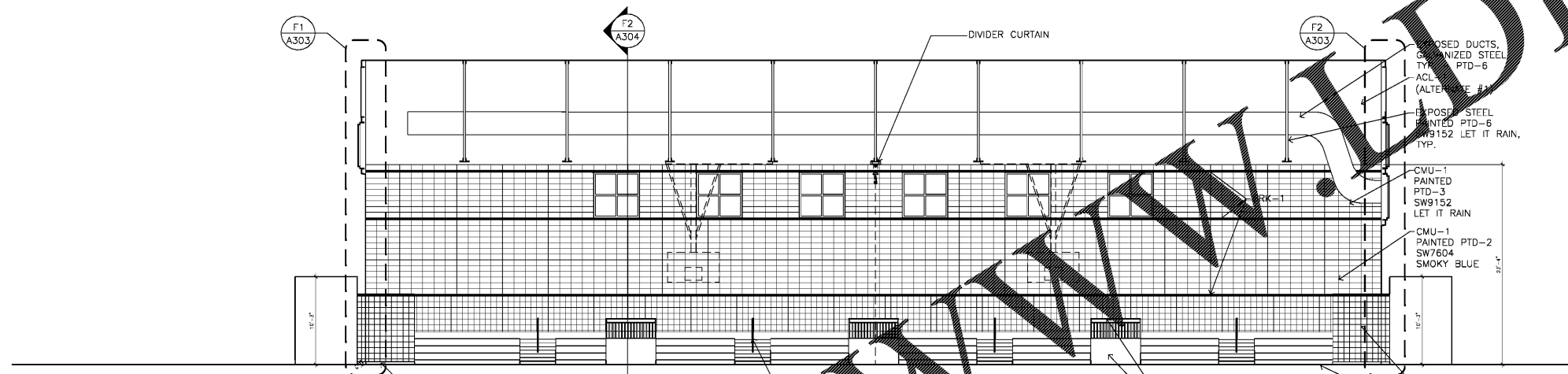
Notes:
BIDDING DOCUMENTS
Not for Construction

Revisions:

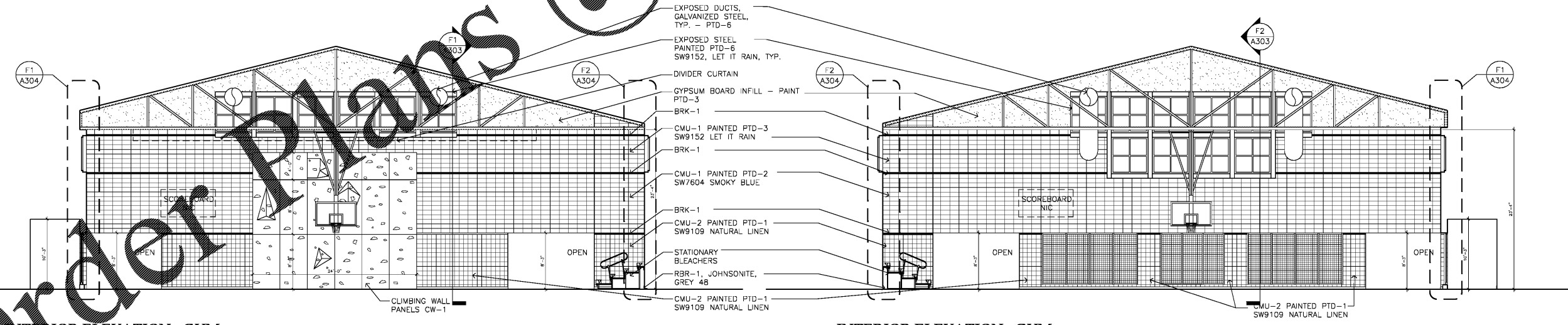
Interior
Elevations
A701
37 of 43
Bidding Documents



B1 INTERIOR ELEVATION - GYM
1/8"=1'-0"



D1 INTERIOR ELEVATION - GYM
1/8"=1'-0"



F1 INTERIOR ELEVATION - GYM
1/8"=1'-0"

F4 INTERIOR ELEVATION - GYM
1/8"=1'-0"

- NOTES:**
- SEE SHEETS A605 & A606 FOR ROOM FINISH LEGEND & SCHEDULE.
 - SCOREBOARDS ARE NOT TO BE INSTALLED BUT REQUIRE CONTRACTOR COORDINATION.
 - ALL CMU TO RECEIVE PAINT.

WWW.DILine.com