

Owner:
Georgetown County
716 Prince Street
Georgetown, SC 29442

SGA ARCHITECTURE
ARCHITECTURE AND INTERIORS
LANDSCAPE ARCHITECTURE

Pawleys Island / Charleston / GREENVILLE
8263 Ocean Hwy. / PO Box 1859
Fowling Island, SC 29555
Phone: 843.237.3421 / Fax: 843.237.1992
www.SGAarchitecture.com

Civil Consultant:
ETS
ENGINEERING AND TECHNICAL
SERVICES, INC.
CONSULTING ENGINEERS
88 Centerville Lane
P.O. Box 200
Pawleys Island, SC 29555
Phone: (843) 237-3421 Fax: (843) 237-2003

MEP Consultant:
Charleston Engineering
1219 Wappoo Creek Dr.
Charleston, SC 29412
843-752-4242
Mechanical, Plumbing & Electrical

Structural Consultant:

WEATHERLY STRUCTURAL ENGINEERS
1000 Hwy 17 S, Suite 100, SC 29505

Irrigation Consultant:



Corporate Seal



Individual Seal

MEMBERS OF
THE AMERICAN INSTITUTE OF ARCHITECTS
COPYRIGHT © 2018 ALL RIGHTS RESERVED
PRINTED OR ELECTRONIC DRAWINGS AND
DOCUMENTATION MAY NOT BE REPRODUCED
IN ANY FORM WITHOUT WRITTEN PERMISSION
FROM SGA ARCHITECTURE.

Job Number: 17070
Date: 02/16/18
Drawn by: PW, MR
Checked by: MR

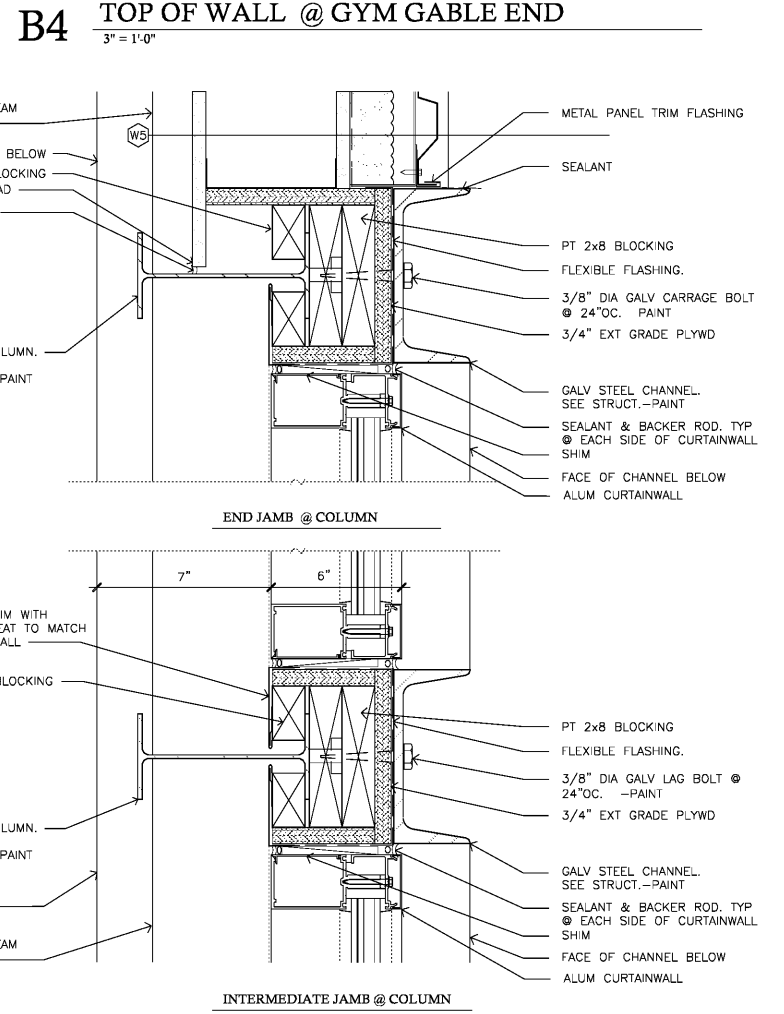
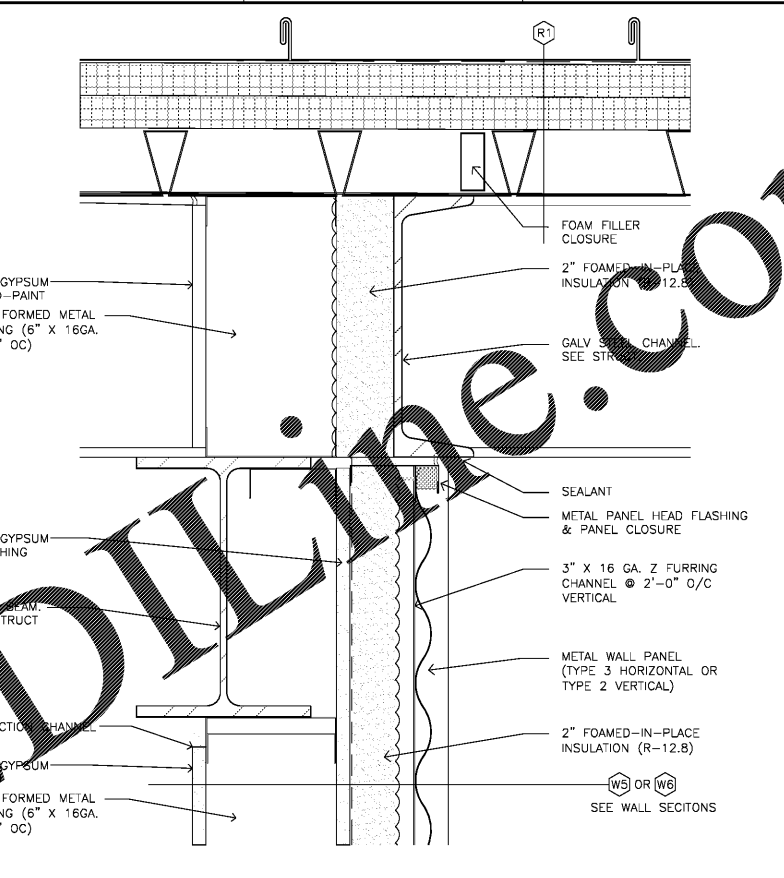
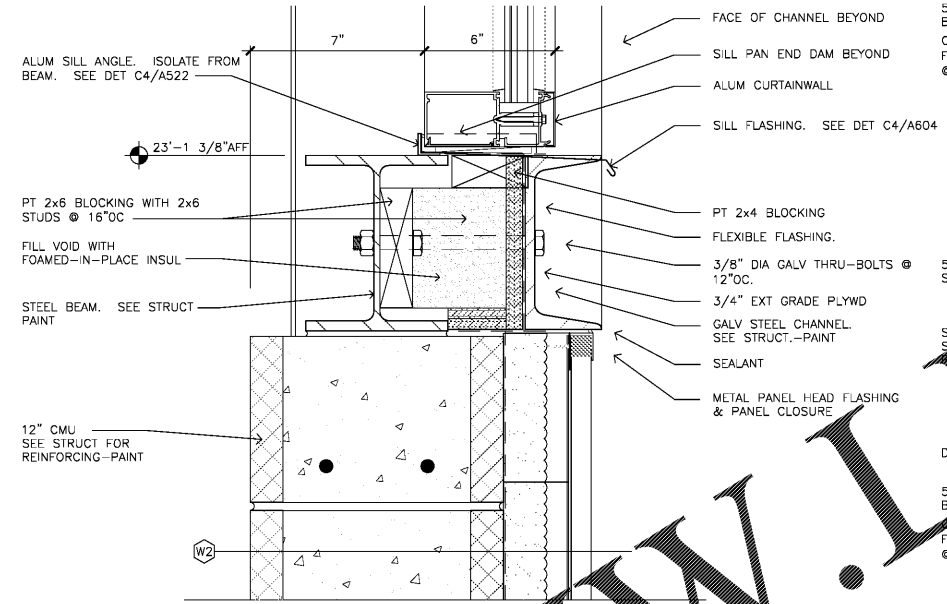
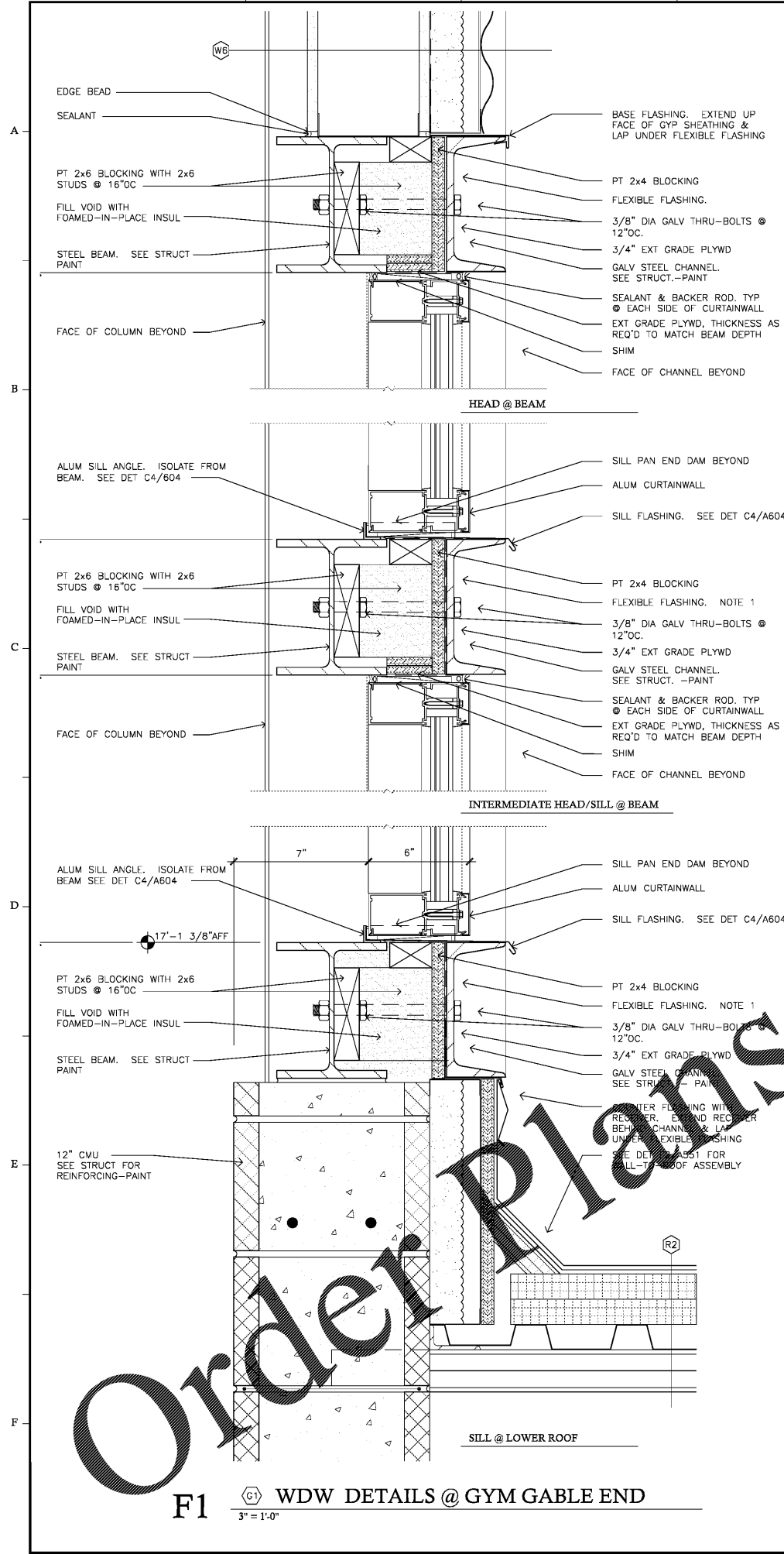
Notes:
BIDDING DOCUMENTS
Not for Construction

Revisions:

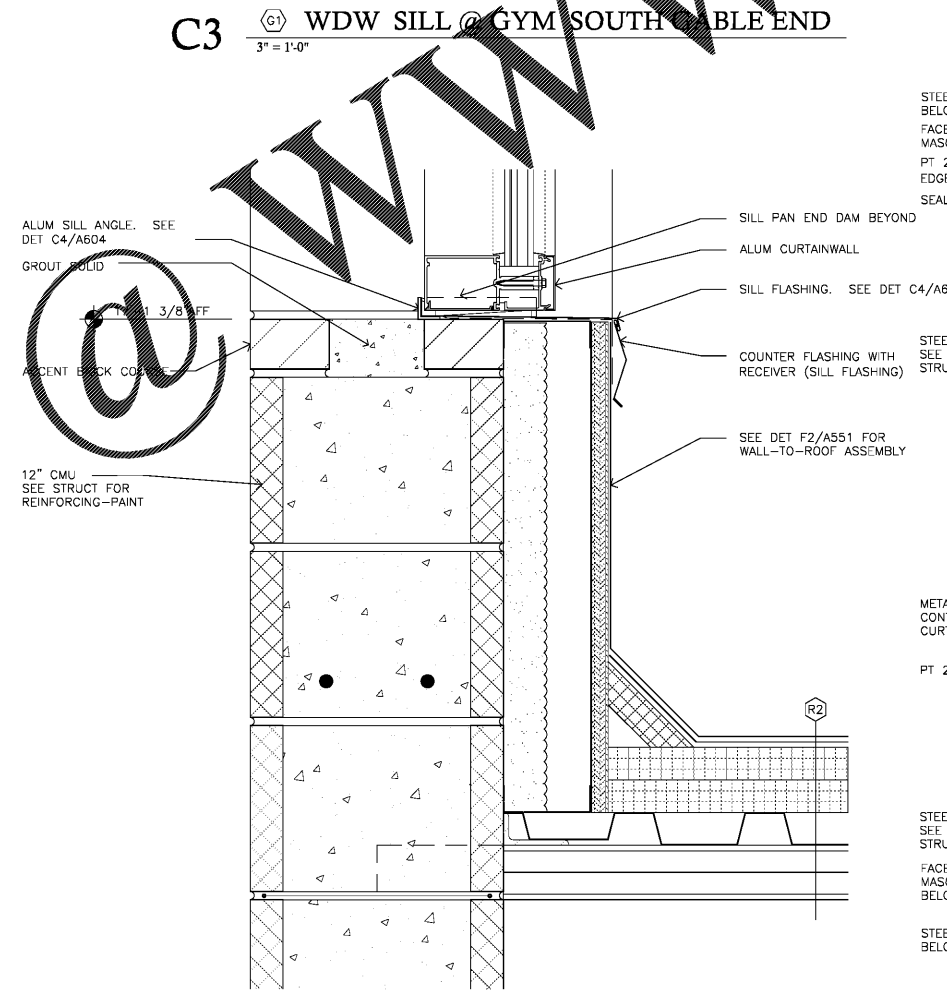
Gym
Curtainwall Details
A523
23 of 43
Bidding Documents

NOTES

1. MATCH PROFILE OF WALL COPING @ DET B3/A523 & SEE DET C4/A604 FOR DETAILS OF SILL PAN.
2. 3 1/2"x3 1/2"x1/4" STEEL ANGLE. EXPANSION BOLT TO MASONRY & BOLT TO BLOCKING @ 32"OC.
3. BOTTOM OF PANEL TO RETURN BACK +1/2" (SIMILAR TO PANEL PROFILES @ MULLION) FOR INSTALLATION OF SEALANT & BACKER ROD.
4. RETURN TRIM TO FACE OF MASONRY (BETWEEN HEAD FLASHING & RUNNER CHANNEL). ANCHOR TO CHANNEL WITH PREFINISHED FASTENERS TO MATCH WALL PANELS.



Order Plans



F1 WDW DETAILS @ GYM GABLE END
3" x 1'-0"

F2 HEAD @ BEAM

F3 SILL DET @ GYM EAST WDW
3" x 1'-0"

F4 WDW DETAILS @ GYM GABLE END
3" x 1'-0"

F5 END JAMB @ COLUMN

F6 INTERMEDIATE JAMB @ COLUMN

F7 SILL @ LOWER ROOF