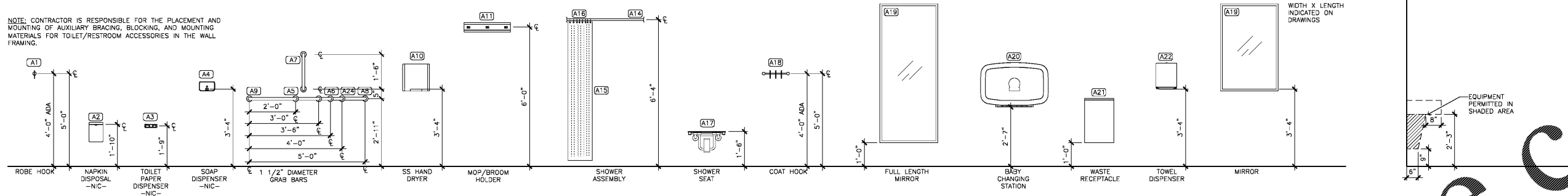


NOTE: CONTRACTOR IS RESPONSIBLE FOR THE PLACEMENT AND MOUNTING OF AUXILIARY BRACING, BLOCKING, AND MOUNTING MATERIALS FOR TOILET/RESTROOM ACCESSORIES IN THE WALL FRAMING.



**B1 RESTROOM ACCESSORIES LEGEND & MOUNTING HEIGHTS**  
1/2" = 1'-0"

SEE SPECIFICATION SECTION 102800 FOR ADDITIONAL INFORMATION

SEE CLEARANCES

ACCESSORIES LEGEND					
ITEM CODE	ITEM	MANUFACTURER INFORMATION	OWNER FURNISHED/ CONTRACTOR INSTALLED	CONTRACTOR FURNISHED/ CONTRACTOR INSTALLED	NOTES
A1	ROBE HOOK	DOUG MOCKETT & CO. MODEL# HK4A / SATIN STAINLESS STEEL FINISH		X	
A2	NAPKIN DISPOSAL	-	X		
A3	TOILET TISSUE DISPENSER	-	X		
A4	SOAP DISPENSER	-	X		
A5	36" GRAB BAR	BOBRICK MODEL# B-8806 SERIES / SATIN FINISH		X	
A6	42" GRAB BAR	BOBRICK MODEL# B-8806 SERIES / SATIN FINISH		X	
A7	18" GRAB BAR	BOBRICK MODEL# B-8806 SERIES / SATIN FINISH		X	
A8	60" GRAB BAR	BOBRICK MODEL# B-8806 SERIES / SATIN FINISH		X	
A9	24" GRAB BAR	BOBRICK MODEL# B-8806 SERIES / SATIN FINISH		X	
A10	ELECTRIC HAND DRYER	BOBRICK MODEL# B-7128 / 115V		X	
A11	MOP RACK	BOBRICK MODEL# B-223x24		X	
A12	UNDER-LAV GUARD	TRUEBRO INC. LAV-GUARD 2 E7 SERIES / PAINTED		X	CONTRACTOR TO VERIFY REQ. MATERIALS IN ALL LAVATOIRES.
A13	GROOMMET	DOUG MOCKETT & CO. MODEL# TG3 FLIP-TOP SERIES / 2"		X	ARCHITECT TO SELECT FROM MANUF. FULL RANGE OF COLORS.
A14	SHOWER ROD	BOBRICK MODEL# B-207x36 / 36" WIDE		X	
A15	SHOWER CURTAIN	BOBRICK MODEL# B-204-2 / 42" WIDE X 72" HIGH		X	
A16	SHOWER HOOKS	BRADLEY CORPORATION MODEL# 9540		X	
A17	SHOWER SEAT	BOBRICK MODEL# B-5191		X	
A18	COAT HOOK	DOUG MOCKETT & CO. MODEL# HK4B / SATIN STAINLESS STEEL FINISH		X	
A19	FULL LENGTH MIRROR	BRADLEY CORPORATION MODEL# 781-3072 / CHANNEL FRAME		X	
A20	BABY CHANGING STATION	KDALA CARE PRODUCTS MODEL# KB200-XX		X	ARCHITECT TO SELECT FROM MANUF. FULL RANGE OF COLORS.
A21	WASTE RECEPTACLE	BOBRICK MODEL# B-277 / CONTURA SERIES		X	
A22	TOWEL DISPENSER	BOBRICK MODEL# B-4262 / CONTURA SERIES		X	
A23	MIRROR	BRADLEY CORPORATION MODEL# 781-XXXX / SIZES INDICATED ON DRAWINGS		X	
A24	48" GRAB BAR	BOBRICK MODEL# B-8806 SERIES / SATIN FINISH		X	
A25	WASTE RECEPTACLE	BOBRICK MODEL# B-2400 / FUNNEL TOP		X	

Georgetown  
County  
Regional Parks  
Andrews  
Recreation Center

Owner:  
Georgetown County  
716 Prince Street  
Georgetown, SC 29442

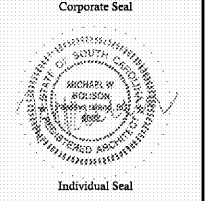
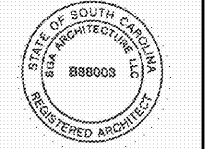
SGA ARCHITECTURE  
ARCHITECTURE AND PLANNING  
LANDSCAPE ARCHITECTURE  
Pawleys Island / Charleston / GREENVILLE  
8263 Ocean Hwy. / PO Box 1859  
Folly Beach, SC 29555  
Phone: 843.237.3421 / Fax: 843.237.1992  
www.sgaarchitecture.com

Civil Consultant:  
**ETS**  
ENGINEERING AND TECHNICAL  
SERVICES, INC.  
CONSTRUCTION DIVISION  
88 Charleston Lane  
P.O. Box 2926  
Pawleys Island, SC 29555  
Phone: (843) 237-2822 Fax: (843) 237-2823

MEP Consultant:  
**Charleston Engineering**  
1219 Wappoo Creek Dr.  
Charleston, SC 29412  
843-752-4242  
Mechanical, Plumbing & Electrical

Structural Consultant:  
**WEATHERLY STRUCTURAL ENGINEERS**  
2000 West 10th Street, Suite 100  
Charleston, SC 29405

Irrigation Consultant:



MEMBERS OF  
THE AMERICAN INSTITUTE OF ARCHITECTS  
COPYRIGHT 2018 ALL RIGHTS RESERVED  
PRINTED OR ELECTRONIC DRAWINGS AND  
DOCUMENTATION MAY NOT BE REPRODUCED  
IN ANY FORM WITHOUT WRITTEN PERMISSION  
FROM SGA ARCHITECTURE.

Job Number: 17070  
Date: 02/16/18  
Drawn by: PW,MR  
Checked by: MR

Notes:  
**BIDDING DOCUMENTS**  
Not for Construction

Revisions:

Mounting Heights  
and  
Accessory Legend  
**A407**  
20 of 43

Order Plans @

WWW.LDILine.com