

Owner:
Georgetown County
716 Prince Street
Georgetown, SC 29442

SGA ARCHITECTURE

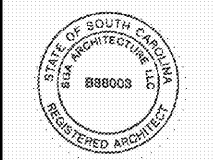
1400 ARCHITECTURE AND PLANNING
PAWLEYS ISLAND / CHARLESTON / GREENVILLE
6263 Ocean Hwy. / PO Box 1859
Fleming Island, SC 29555
Phone: 843.237.3421 / Fax: 843.237.1992
www.SGAarchitecture.com

Civil Consultant:
ETS
ENGINEERING AND TECHNICAL
SERVICES, INC.
CONSTRUCTION PROFESSIONALS
88 Cartersville Lane
P.O. Box 2020
Pawleys Island, SC 29555
Phone: 843.237.3421 Fax: 843.237.1992

MEP Consultant:
Charleston Engineering
1219 Wappoo Creek Dr.
Charleston, SC 29412
843-752-4242
Mechanical, Plumbing & Electrical

Structural Consultant:
WEATHERLY STRUCTURAL ENGINEERS
2000 The Woodlands Blvd., Suite 200
Charleston, SC 29405

Irrigation Consultant:



Corporate Seal



Individual Seal

MEMBERS OF
THE AMERICAN INSTITUTE OF ARCHITECTS
COPYRIGHT 2018 ALL RIGHTS RESERVED
PRINTED OR ELECTRONIC DRAWINGS AND
DOCUMENTATION MAY NOT BE REPRODUCED
IN ANY FORM WITHOUT WRITTEN PERMISSION
FROM SGA ARCHITECTURE.

Job Number: 17070
Date: 02/16/18
Drawn by: PW,MR
Checked by: MR

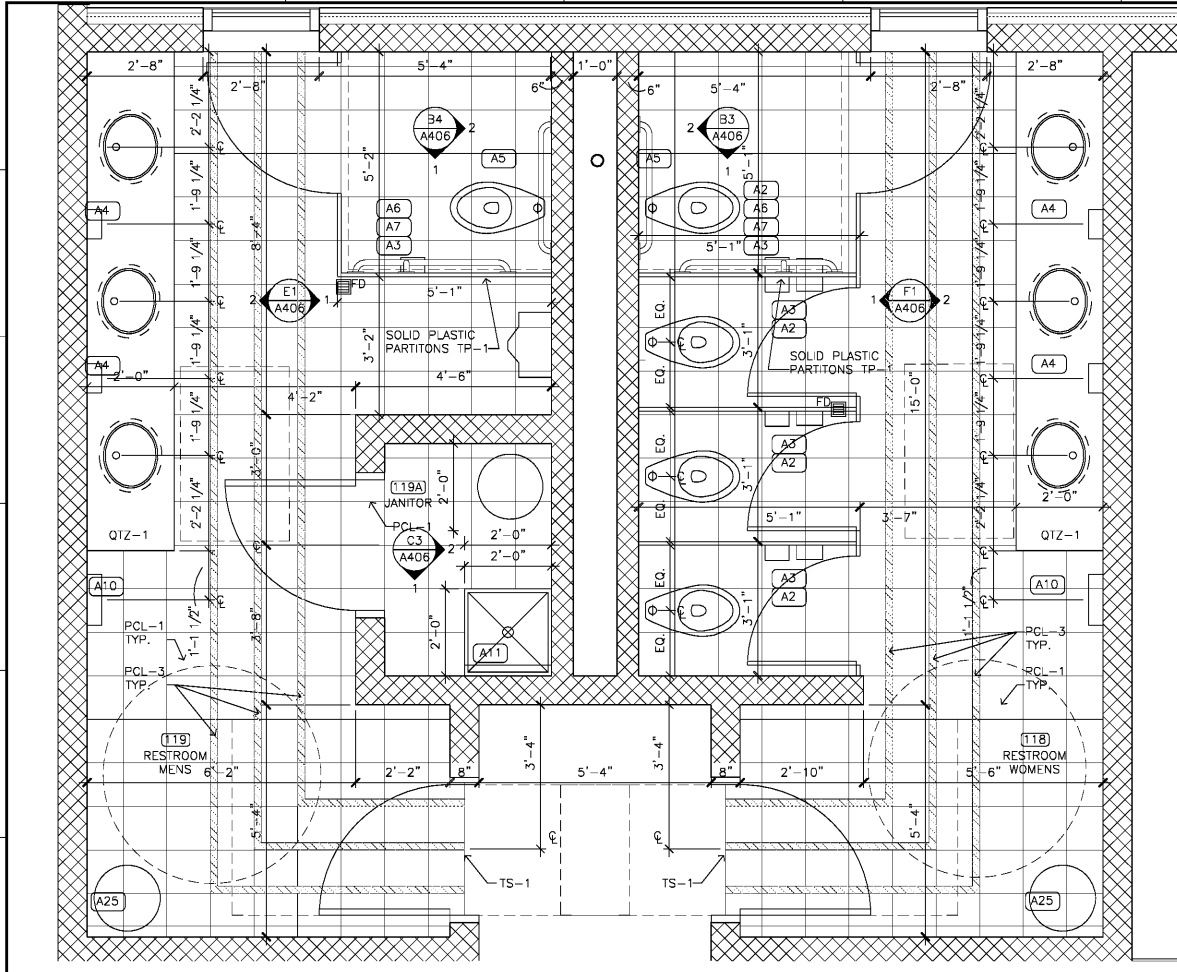
Note:
BIDDING DOCUMENTS
Not for Construction

Revisions:

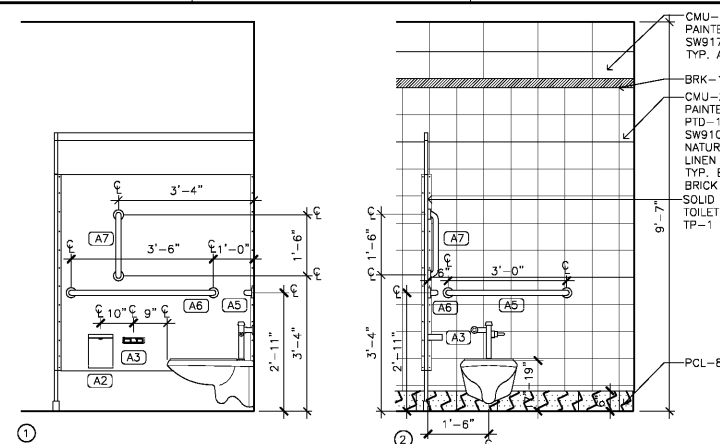
Enlarged Restroom
Plans and Elevations

A406
19 of 43

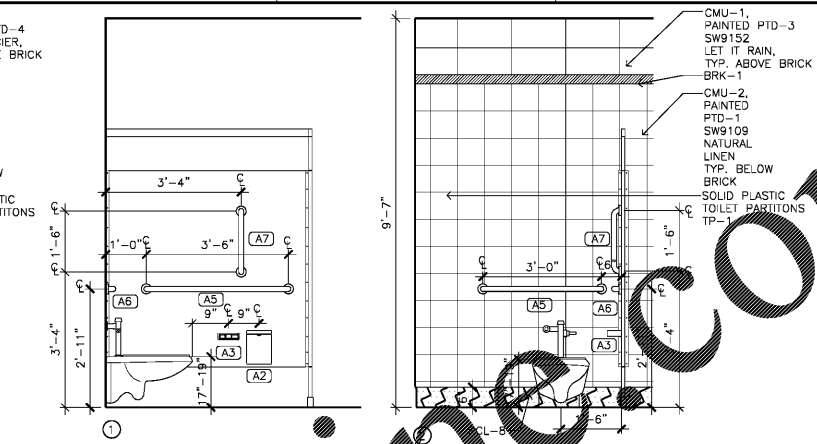
Bidding Documents



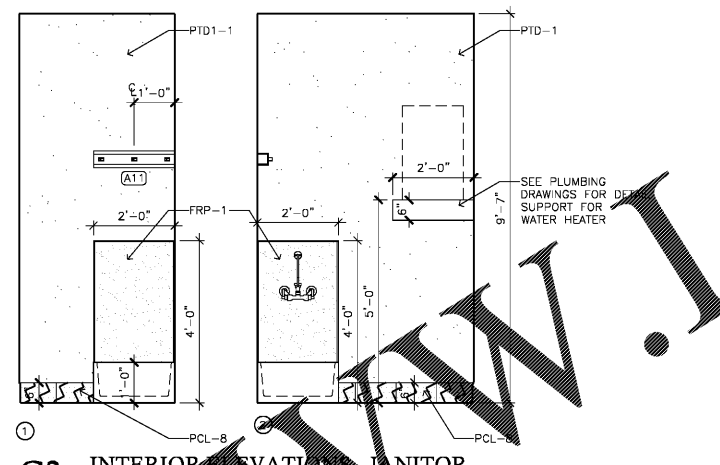
C1 ENLARGED PLAN - MENS RESTROOM 119 / WOMENS RESTROOM 118 / JANITOR 119A
1/2" = 1'-0"



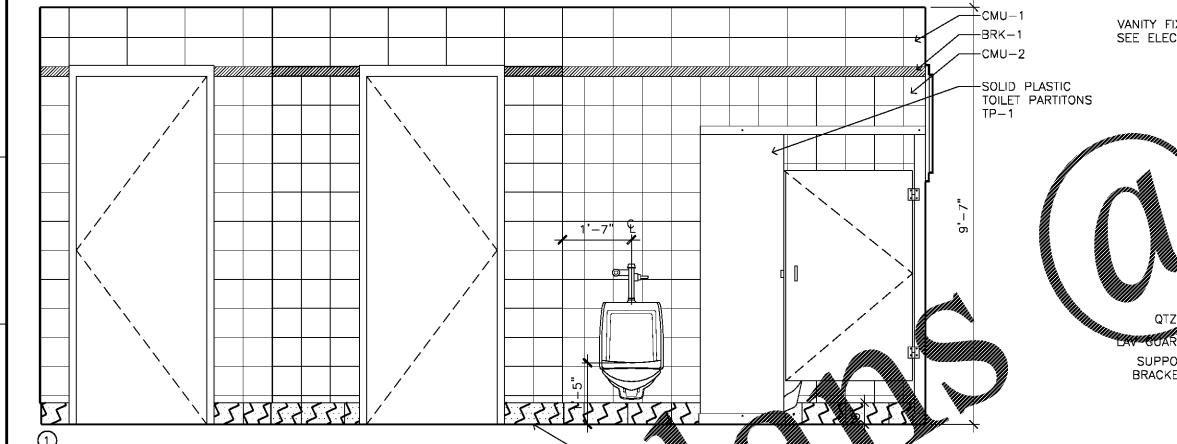
B3 INTERIOR ELEVATIONS - WOMENS RESTROOM
1/2" = 1'-0"



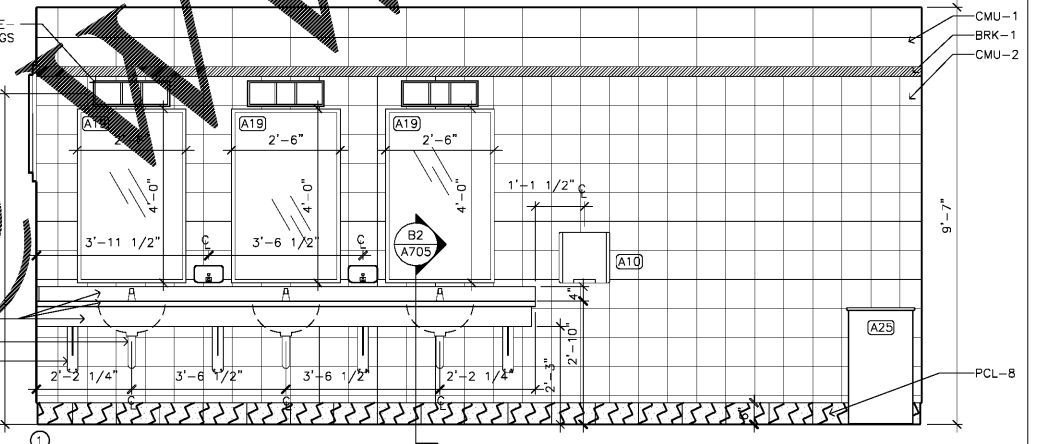
B4 INTERIOR ELEVATIONS - MENS RESTROOM
1/2" = 1'-0"



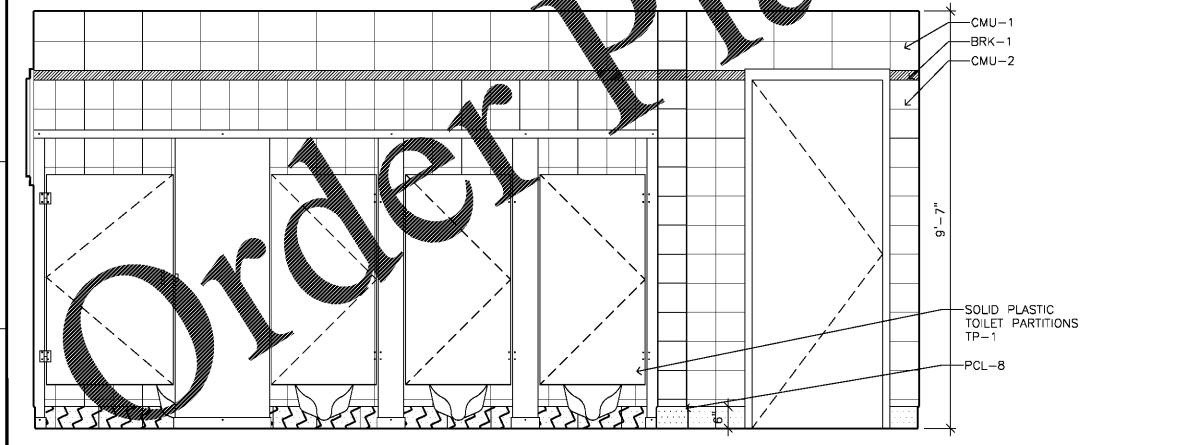
C3 INTERIOR ELEVATION - JANITOR
1/2" = 1'-0"



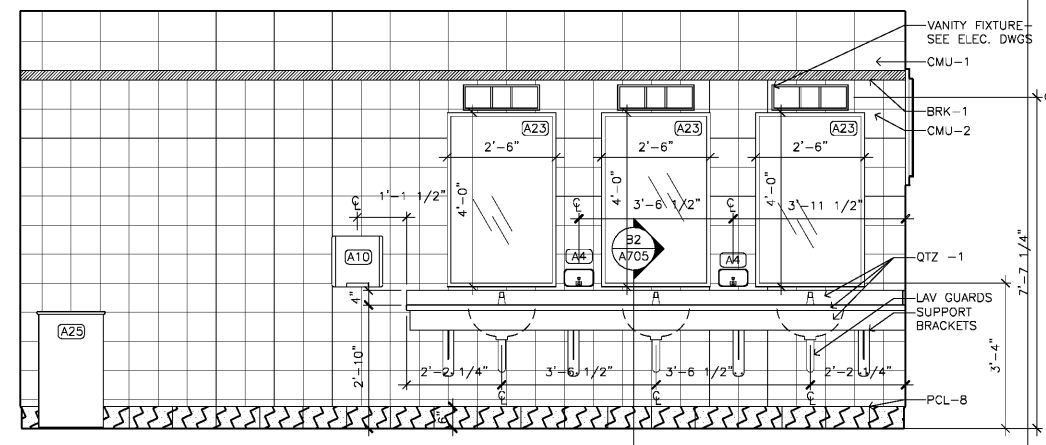
E1 ELEVATION - MENS RESTROOM
1/2" = 1'-0"



E2 ELEVATION - WOMENS RESTROOM
1/2" = 1'-0"



F1 ELEVATION - MENS RESTROOM
1/2" = 1'-0"



F2 ELEVATION - WOMENS RESTROOM
1/2" = 1'-0"

- NOTES:**
- SEE SHEETS A603 & A604 FOR ROOM FINISH LEGEND & SCHEDULE.
 - SEE SHEET A409 FOR ACCESSORY LEGEND.
 - ALL CMU TO RECEIVE PAINT.
 - PCL-5 BULLNOSE.
- PCL-1 FIELD TILE
 - PCL-2 DECORATIVE ACCENT ON THE FLOOR
 - PCL-8 COVE BASE

Order Plans

@

WWW.LDILLING.COM