

Owner:
Georgetown County
716 Prince Street
Georgetown, SC 29442

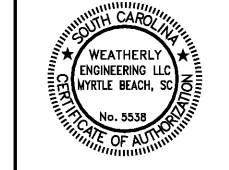
SGA ARCHITECTURE
ARCHITECTURAL FIRM
Pawleys Island / Charleston
245 Business Center Lane / PO Box 1859
Pawleys Island, SC 29585
Phone: 843.237.2421 / Fax: 843.237.1992
www.sgaarchitecture.com

Civil Consultant:
ETS
ENGINEERING AND TECHNICAL SERVICES, INC.
38 Centerville Lane
Pawleys Island, SC 29585
Phone: 843.237-3002 Fax: 843.237-2889

MEP Consultant:
Charleston Engineering
103 E. Wagon Wheel Dr.
Charleston, SC 29412
843-762-4342
Mechanical, Plumbing & Electrical

Structural Consultant:
Weatherly
11444 Shalimar Blvd., Myrtle Beach, SC 29577 P.O. Box 10810
Copyright 2018. All rights reserved.
PRINTED OR ELECTRONIC DRAWINGS AND DOCUMENTATION MAY NOT BE REPRODUCED IN ANY FORM WITHOUT WRITTEN PERMISSION FROM WEATHERLY ENGINEERING.

Irrigation Consultant:



MEMBERS OF THE AMERICAN INSTITUTE OF ARCHITECTS
COPYRIGHT 2018. ALL RIGHTS RESERVED.
PRINTED OR ELECTRONIC DRAWINGS AND DOCUMENTATION MAY NOT BE REPRODUCED IN ANY FORM WITHOUT WRITTEN PERMISSION FROM SGA ARCHITECTURE.

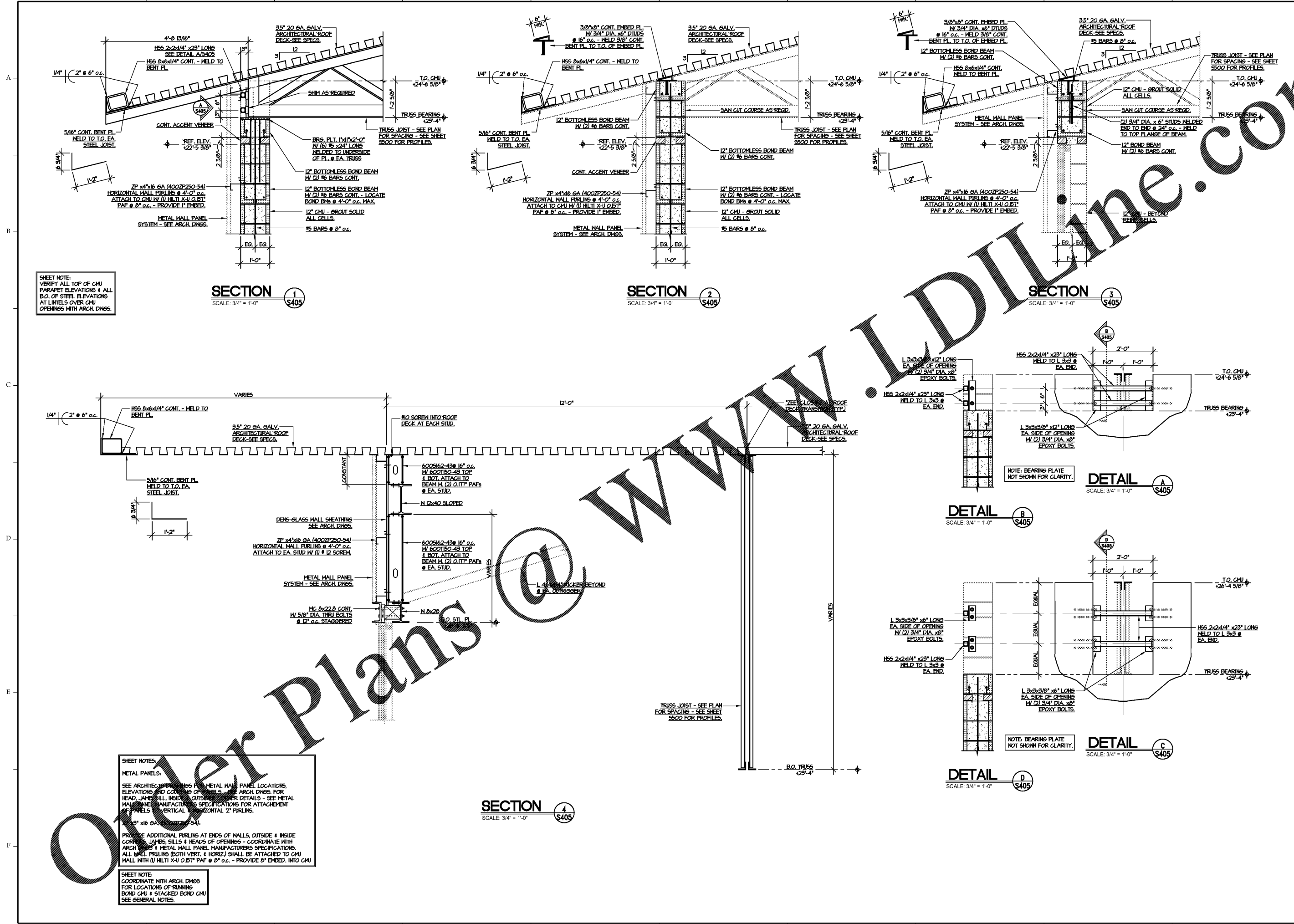
Job Number: 15017 (WE 18-126)
Date: 03/14/18
Drawn by: CMW
Checked by: DWS

Notes:
BIDDING DOCUMENTS

Revisions:

Roof Framing Sections & Details

S405



SHEET NOTE:
VERIFY ALL TOP OF CMU PARAPET ELEVATIONS & ALL B.O. OF STEEL ELEVATIONS AT LINEETS OVER CMU OPENINGS WITH ARCH. DNES.

SHEET NOTES:
METAL PANELS:
SEE ARCHITECTURAL DNES FOR METAL PANEL LOCATIONS, ELEVATIONS AND COORDINATE OF PANELS. SEE ARCH. DNES FOR HEAD JAMES SILL, HEADS OF OPENINGS & OVER DETAILS - SEE METAL WALL PANEL MANUFACTURERS SPECIFICATIONS FOR ATTACHMENT OF PANELS TO VERTICAL & HORIZONTAL 2\"/>

SHEET NOTE:
COORDINATE WITH ARCH. DNES FOR LOCATIONS OF RUNNING BOND CMU & STACKED BOND CMU SEE GENERAL NOTES.

Over Plans @ WWW.LDILLINE.COM