

Owner:  
Georgetown County  
716 Prince Street  
Georgetown, SC 29442

SGA ARCHITECTURE  
Pawleys Island / Charleston  
245 Business Center Lane / PO Box 1859  
Pawleys Island, SC 29385  
Phone: 843.237.2421 / Fax: 843.237.1992  
www.sgaarchitecture.com

Civil Consultant:  
**ETS**  
ENGINEERING AND TECHNICAL SERVICES, INC.  
2800 Palmetto Lane  
Georgetown, SC 29442  
Phone: 843.237-3002 Fax: 843.237-2889

MEP Consultant:  
**Charleston Engineering**  
1038 B. Wagon Wheel Dr.  
Charleston, SC 29412  
843-762-4242  
Michael, Fleming & Harrel

Structural Consultant:  
**Weatherly**  
14144 Shalston Blvd., Suite 100, Charleston, SC 29405  
Copyright 2018. All rights reserved.  
PRINTED OR ELECTRONIC DRAWINGS AND DOCUMENTATION MAY NOT BE REPRODUCED IN ANY FORM WITHOUT WRITTEN PERMISSION FROM SGA ARCHITECTURE.

Irrigation Consultant:

Professional Engineer Seal  
No. 15317  
03/14/18

Professional Engineer Seal  
No. 5538  
WEATHERLY ENGINEERING LLC  
WYTHE BEACH, SC

MEMBERS OF THE AMERICAN INSTITUTE OF ARCHITECTS  
COPYRIGHT 2018. ALL RIGHTS RESERVED.  
PRINTED OR ELECTRONIC DRAWINGS AND DOCUMENTATION MAY NOT BE REPRODUCED IN ANY FORM WITHOUT WRITTEN PERMISSION FROM SGA ARCHITECTURE.

Job Number: 15017 (WE 18-126)  
Date: 03/14/18  
Drawn by: CMW  
Checked by: DWS

Notes:  
**BIDDING DOCUMENTS**

Revisions:

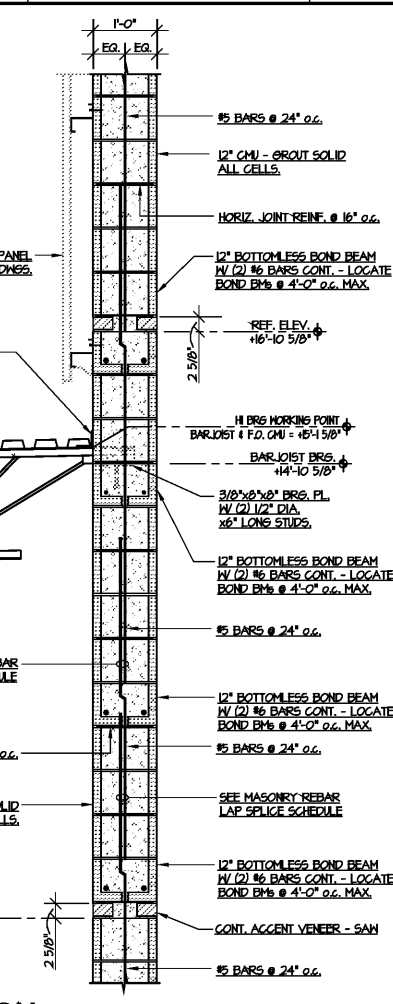
Roof Framing Sections & Details

S403

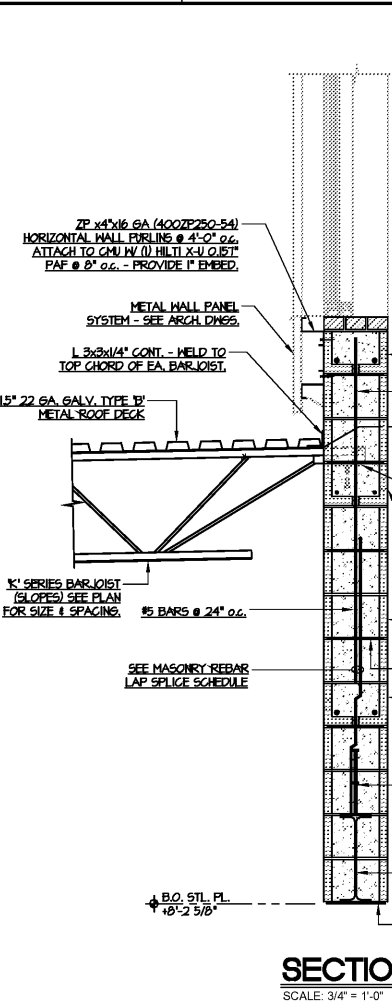
SHEET NOTE:  
VERIFY ALL TOP OF CMU PARAPET ELEVATIONS & ALL B.O. OF STEEL ELEVATIONS AT LINTELS OVER CMU OPENINGS WITH ARCH. DWS.

METAL PANELS:  
SEE ARCHITECTS DRAWINGS FOR METAL WALL PANEL LOCATIONS, ELEVATIONS AND COURSING OF PANELS - SEE ARCH. DWS. FOR HEAD, JAMB, SILL, INSIDE & OUTSIDER CORNER DETAILS - SEE METAL WALL PANEL MANUFACTURERS SPECIFICATIONS FOR ATTACHMENT OF PANELS TO VERTICAL & HORIZONTAL 'Z' PURLINS.  
7P x4"x16 GA. (40027250-54)  
PROVIDE ADDITIONAL PURLINS AT ENDS OF WALLS, OUTSIDE & INSIDE CORNERS, JAMBS, SILLS & HEADS OF OPENINGS - COORDINATE WITH ARCH. DWS & METAL WALL PANEL MANUFACTURERS SPECIFICATIONS. ALL WALL PURLINS (BOTH VERT. & HORIZ.) SHALL BE ATTACHED TO CMU WALL WITH (U) HILTI X-U 0.51T PAF @ 8" o.c. - PROVIDE 1" EMBED. INTO CMU

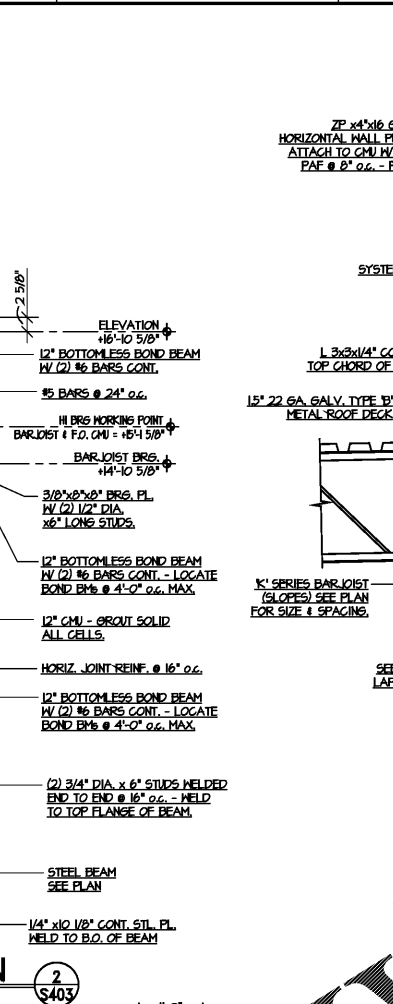
SHEET NOTE:  
COORDINATE WITH ARCH. DWS FOR LOCATIONS OF RUNNING BOND CMU & STACKED BOND CMU - SEE GENERAL NOTES.



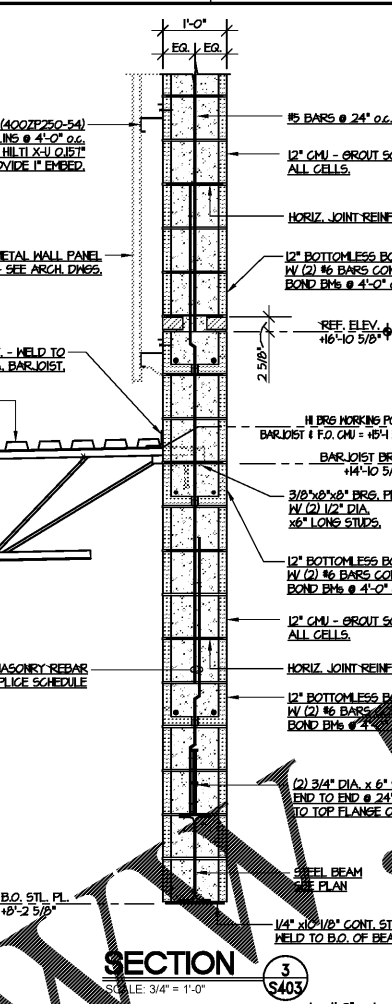
SECTION 1  
SCALE: 3/4" = 1'-0"  
S403



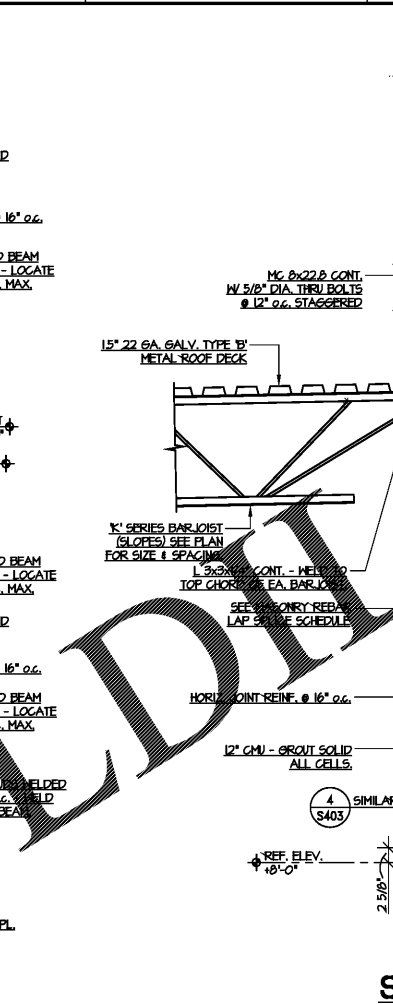
SECTION 2  
SCALE: 3/4" = 1'-0"  
S403



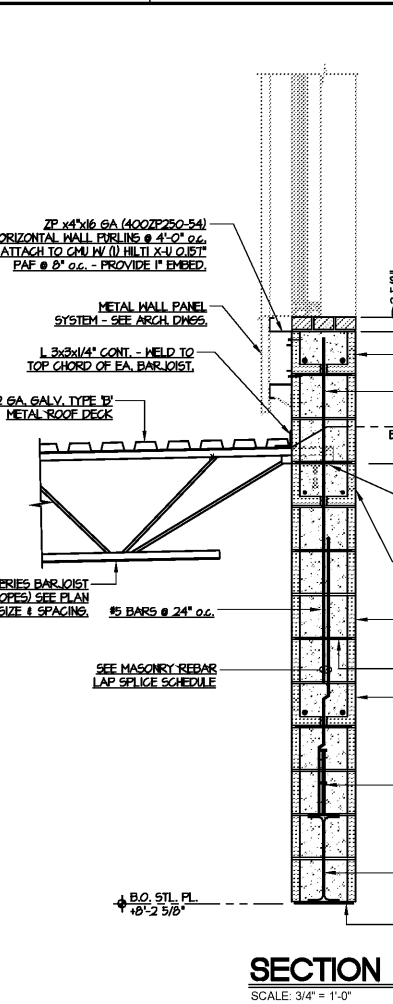
SECTION 3  
SCALE: 3/4" = 1'-0"  
S403



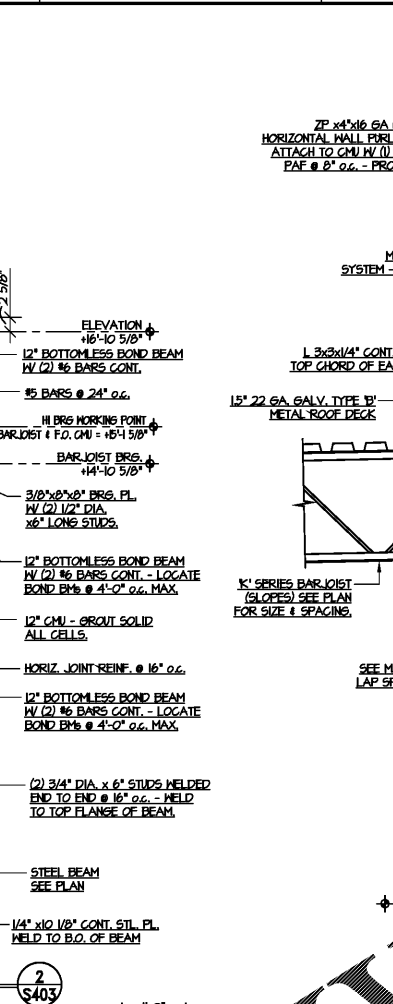
SECTION 4  
SCALE: 3/4" = 1'-0"  
S403



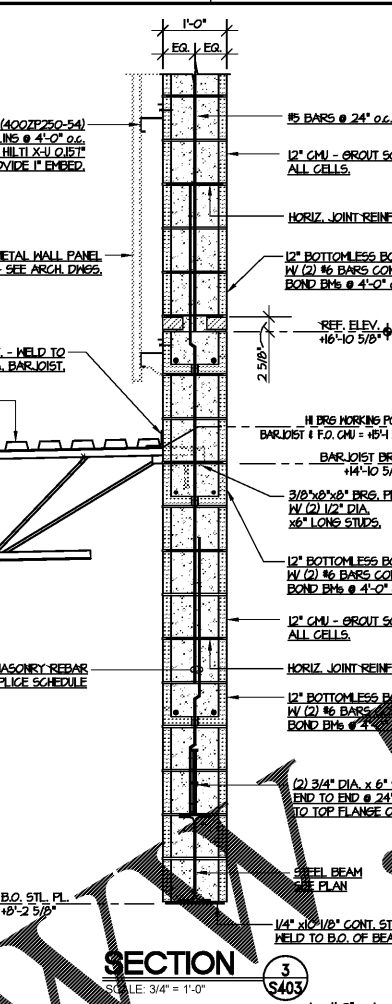
SECTION 5  
SCALE: 3/4" = 1'-0"  
S403



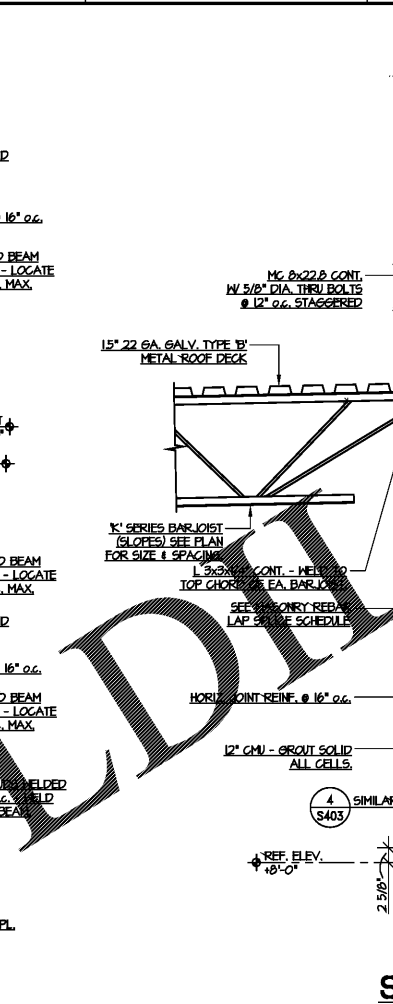
SECTION 6  
SCALE: 3/4" = 1'-0"  
S403



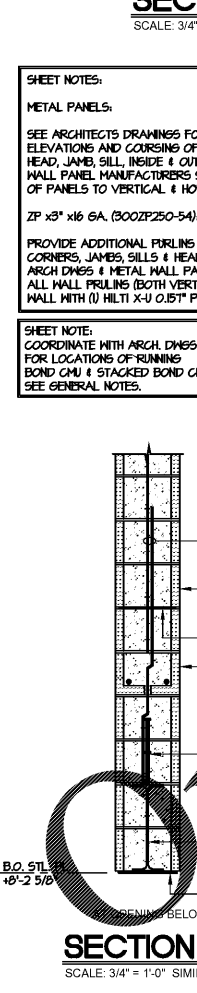
SECTION 7  
SCALE: 3/4" = 1'-0"  
S403



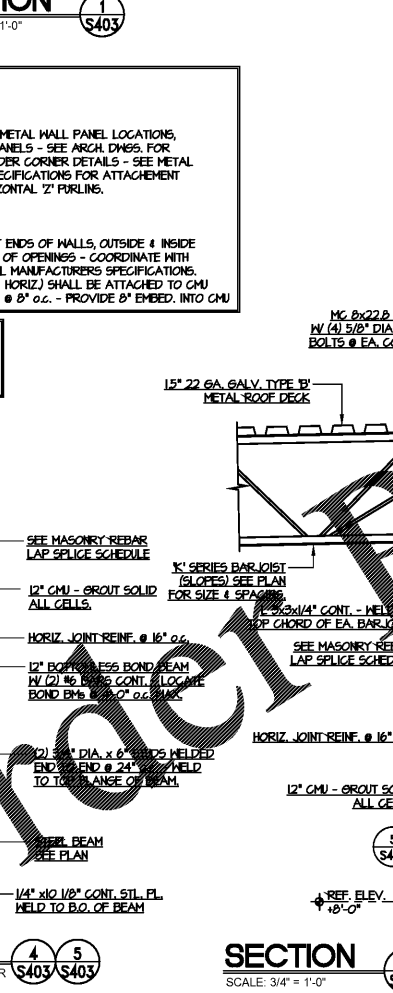
SECTION 8  
SCALE: 3/4" = 1'-0"  
S403



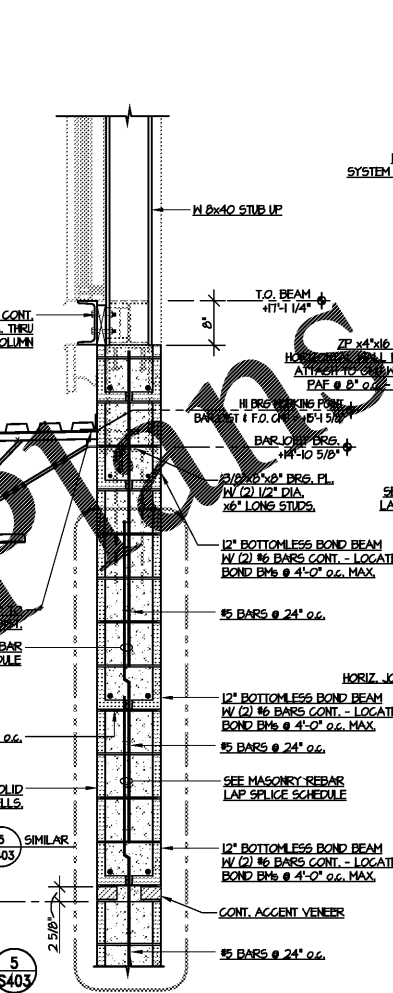
SECTION 9  
SCALE: 3/4" = 1'-0"  
S403



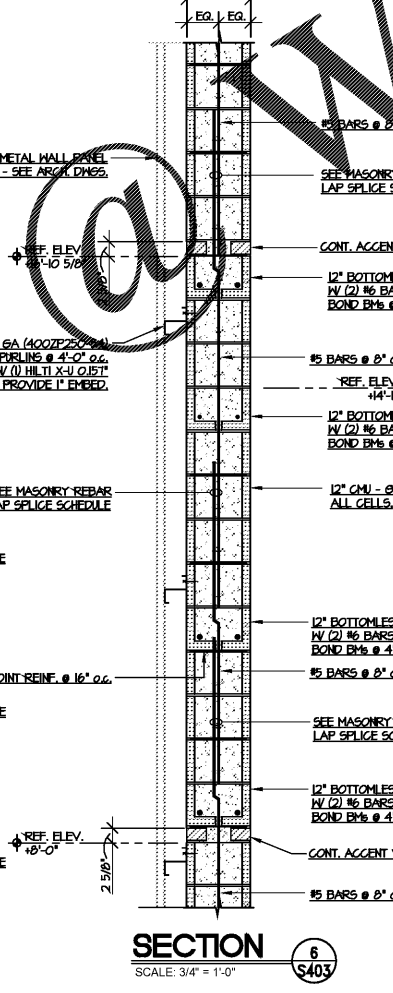
SECTION 10  
SCALE: 3/4" = 1'-0" SIMILAR  
S403



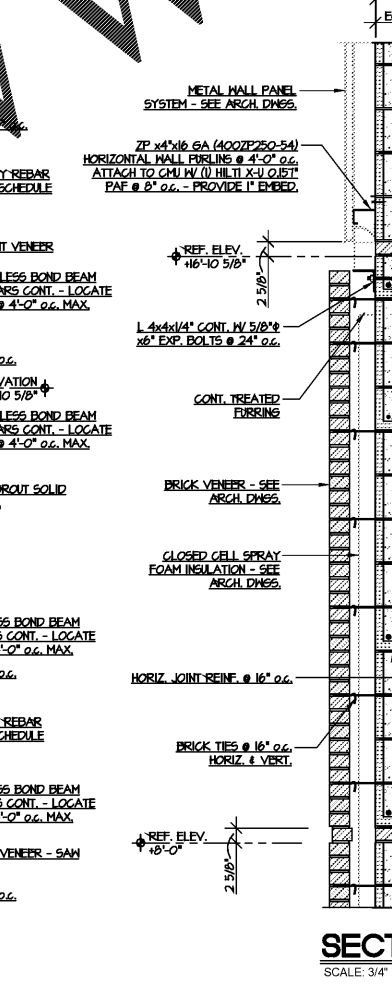
SECTION 11  
SCALE: 3/4" = 1'-0"  
S403



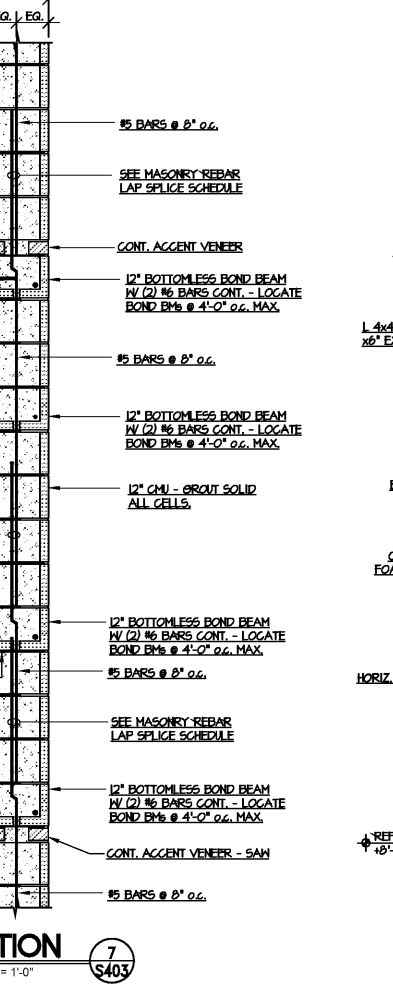
SECTION 12  
SCALE: 3/4" = 1'-0"  
S403



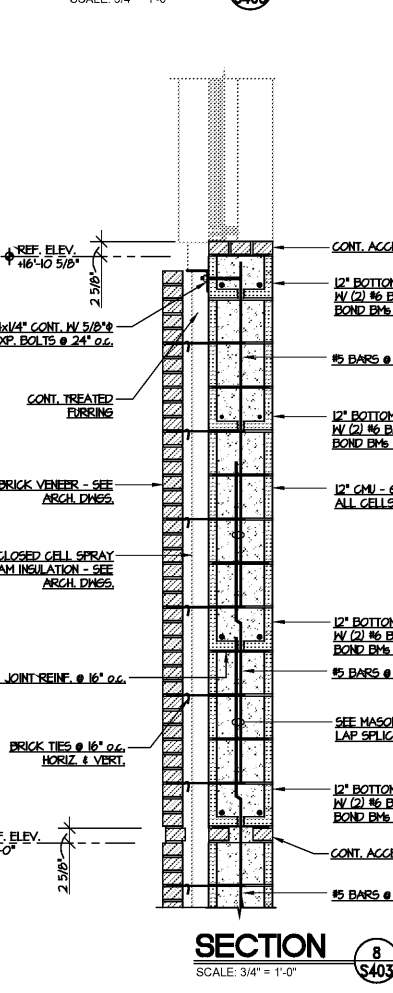
SECTION 13  
SCALE: 3/4" = 1'-0"  
S403



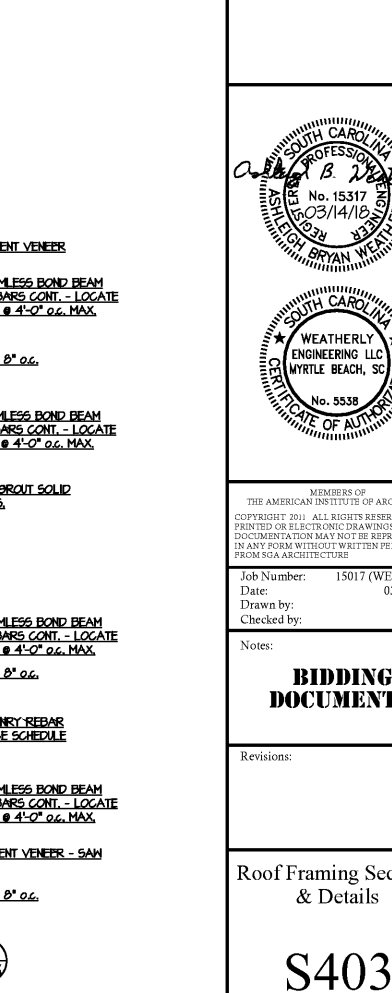
SECTION 14  
SCALE: 3/4" = 1'-0"  
S403



SECTION 15  
SCALE: 3/4" = 1'-0"  
S403



SECTION 16  
SCALE: 3/4" = 1'-0"  
S403



SECTION 17  
SCALE: 3/4" = 1'-0"  
S403