

Owner:
Georgetown County
716 Prince Street
Georgetown, SC 29442

SGA ARCHITECTURE
ARCHITECTS & ENGINEERS

Pawleys Island / Charleston
245 Business Center Lane / PO Box 1859
Pawleys Island, SC 29385
Phone: 843.237.2421 / Fax: 843.237.1992
www.sgaarchitecture.com

Civil Consultant:
ETS
ENGINEERING AND TECHNICAL SERVICES, INC.
38 Commonwealth Lane
Pawleys Island, SC 29385
Phone: 843.237-3002 Fax: 843.237-2889

MEP Consultant:
Charleston Engineering
103 B Wagon Wheel Dr.
Charleston, SC 29412
843-762-4242
Mechanical, Plumbing & Electrical

Structural Consultant:
Weatherly
114 New Station Road, Suite 101, P.O. Box 1481, Myrtle Beach, SC 29577
Copyright © 2018. All rights reserved.
PRINTED OR ELECTRONIC DRAWINGS AND DOCUMENTATION MAY NOT BE REPRODUCED IN ANY FORM WITHOUT WRITTEN PERMISSION FROM WEATHERLY ENGINEERING.

Irrigation Consultant:

Professional Engineer Seal for Bryan Weatherly, No. 15317, expires 03/14/18.

Professional Engineer Seal for Bryan Weatherly, No. 5538, expires 03/14/18.

MEMBERS OF THE AMERICAN INSTITUTE OF ARCHITECTS
COPYRIGHT 2018. ALL RIGHTS RESERVED.
PRINTED OR ELECTRONIC DRAWINGS AND DOCUMENTATION MAY NOT BE REPRODUCED IN ANY FORM WITHOUT WRITTEN PERMISSION FROM SGA ARCHITECTURE

Job Number: 15017 (WE 18-126)
Date: 03/14/18
Drawn by: CMW
Checked by: DWS

Notes:
BIDDING DOCUMENTS

Revisions:

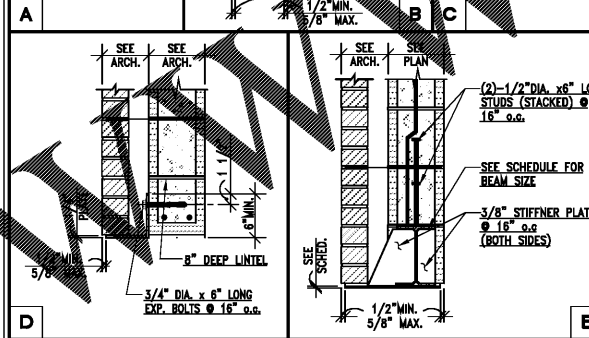
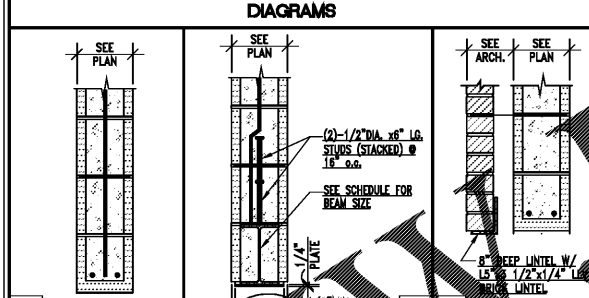
Roof Framing Sections & Details

S400

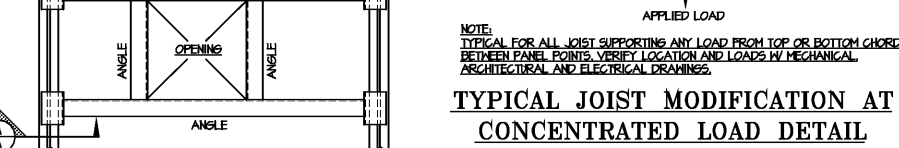
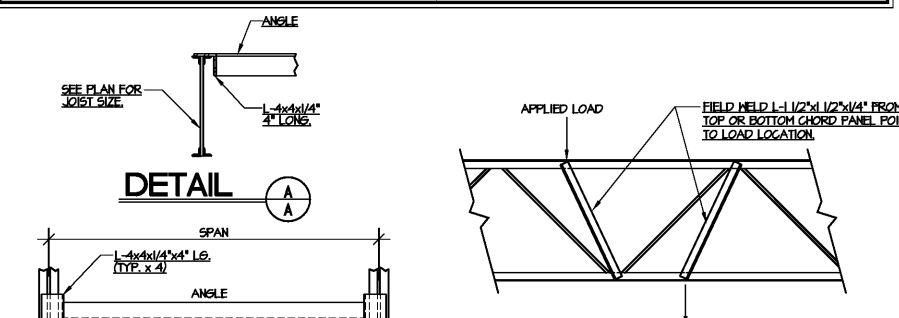
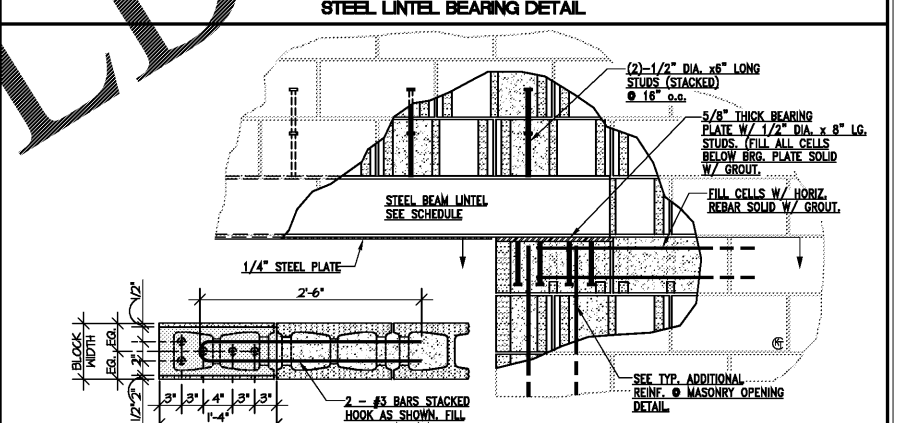
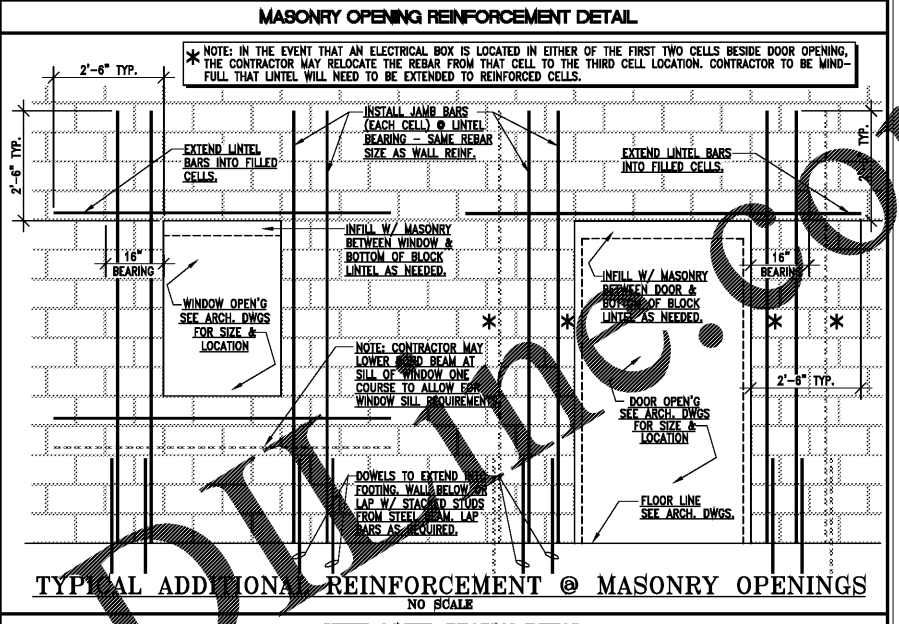
MASONRY BLOCK LINTEL SCHEDULE

MARK	DESCRIPTION	OPENING WIDTH FOR NON-LOAD BEARING WALL	REFERENCE DIAGRAM
BB.1	8" DEEP BOND BEAM W/ 2-#5 BARS CONT.	6'-0" WIDE MAX.	DIAGRAM A
BB.2	W 8x10 W/ 1/4" PLATE CONT.	12'-0" WIDE MAX.	DIAGRAM B
BB.3	W 8x18 W/ 1/4" PLATE CONT.	14'-0" WIDE MAX.	DIAGRAM B
BB.4	W 16x36 W/ 1/4" PLATE CONT.	24'-0" WIDE MAX.	DIAGRAM B
BBB.1	8" DEEP BOND BM. W/ 2-#5 BARS CONT. W/ BENT PLATE	5'-0" WIDE MAX.	DIAGRAM C OR D
BBB.2	W 8x15 W/ 1/4" PLATE CONT.	12'-0" WIDE MAX.	DIAGRAM E
BBB.3	W 8x24 W/ 1/4" PLATE CONT.	14'-0" WIDE MAX.	DIAGRAM E
BBB.4	W 16x26 W/ 3/8" PLATE CONT.	16'-0" WIDE MAX.	DIAGRAM E
B12.1	8" DEEP BOND BEAM W/ 2-#6 BARS CONT.	6'-0" WIDE MAX.	DIAGRAM A
B12.2	W 8x15 W/ 1/4" PLATE CONT.	12'-0" WIDE MAX.	DIAGRAM B
B12.3	W 8x24 W/ 1/4" PLATE CONT.	14'-0" WIDE MAX.	DIAGRAM B
B12.4	W 16x26 W/ 3/8" PLATE CONT.	16'-0" WIDE MAX.	DIAGRAM B
BB12.1	8" DEEP BOND BM. W/ 2-#6 BARS CONT. W/ BENT PLATE	5'-0" WIDE MAX.	DIAGRAM C OR D
BB12.2	W 8x10 W/ 1/4" PLATE CONT.	10'-0" WIDE MAX.	DIAGRAM E
BB12.3	W 8x18 W/ 1/4" PLATE CONT.	12'-0" WIDE MAX.	DIAGRAM E
BB12.4	W 8x28 W/ 1/4" PLATE CONT.	14'-0" WIDE MAX.	DIAGRAM E

CONTRACTOR'S NOTES:
1. CONTRACTOR MAY USE A STEEL ANGLE OF THE SAME SIZE (OR GREATER) IN LIEU OF BENT PLATE.
2. SOME LINTELS IN THIS SCHEDULE MAY NOT BE USED. CONTRACTOR MAY SELECT APPROPRIATE LINTEL ACCORDING TO OPENING SIZE AND WALL CONSTRUCTION, UNLESS NOTED OTHERWISE.
3. SEE ARCHITECTURAL DRAWINGS FOR WALL WIDTHS AND VENEER COURSING.
4. ALL MASONRY LINTEL BEARING TO BE 16" MIN. ON EACH SIDE.
5. BRICK VENEER SUPPORT TO BEAR 8" MIN. ON EACH SIDE.
6. SEE STRUCTURAL PLAN AND ADDITIONAL WALL SECTIONS FOR WALL REINFORCEMENT AND SPACING.

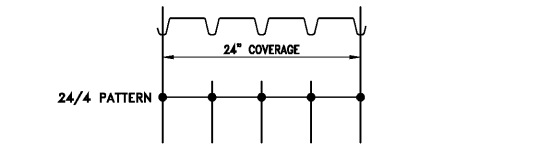


SHEET NOTE:
VERIFY ALL TOP OF CMU PARAPET ELEVATIONS & ALL B.O. OF STEEL ELEVATIONS AT LINTELS OVER CMU OPENINGS WITH ARCH. DWGS.



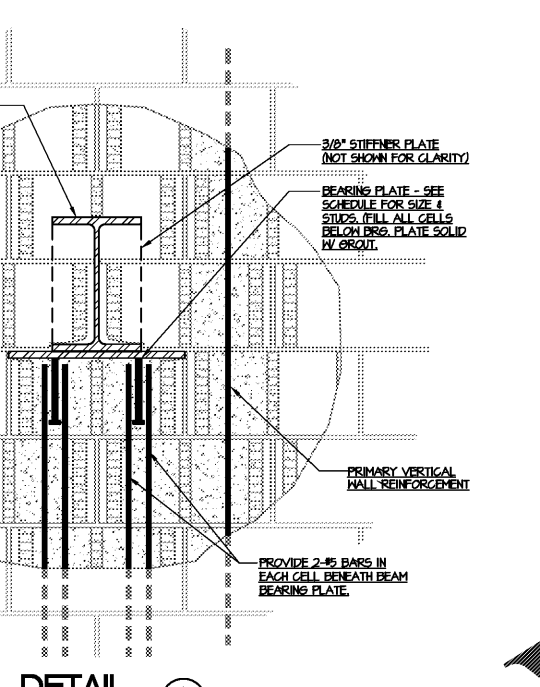
ANGLE SIZE	ALLOWABLE EQUIPMENT LOAD (TOTAL LOAD ON FRAME)	
	SPAN = 4'-0"	SPAN = 5'-0"
L 2"x2"x1/4"	80 lbs	60 lbs
L 3"x3"x1/4"	120 lbs	100 lbs
L 4"x4"x1/4"	160 lbs	133 lbs
L 4"x4"x5/16"	260 lbs	200 lbs
L 4"x4"x3/8"	400 lbs	300 lbs

TYP. ROOF PENETRATION FRAMING
NOTE: CONTRACTOR SHALL INSTALL A 1/4" THICK PLATE FOR FULL WIDTH OF THE SUPPORTING BARJOIST(S) AND BEAM(S) AS NEEDED TO PROVIDE CONTINUOUS BEARING FOR SUPPORT CURBS. FRAMING NOT REQUIRED FOR PENETRATIONS 12"x12" OR 12" DIAMETER AND SMALLER.

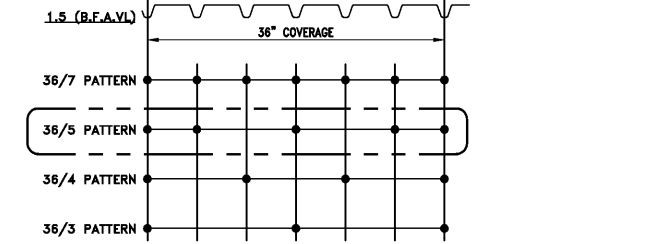


NOTE: PROVIDE THE FOLLOWING HILTI FASTENERS PER APPLICATION FOR ROOF DECK ATTACHMENT. PROVIDE 5 SIDE-LAP FASTENERS PER SPAN. SIDE-LAP FASTENERS TO BE #10 TEK-SCREWS.
FASTENER TYPE: *
X-EDN19THQ12
X-EDN22THQ12
X-ENP-19 L15
ENPH2-21 L15
BASE MATERIAL:
MISCELLANEOUS STEEL AND BARJOIST THICKNESS ≥ 3/16" AND ≤ 3/8"
BARJOIST THICKNESS ≥ 1/8" AND ≤ 1/4"
STRUCTURAL STEEL AND HEAVY BARJOIST THICKNESS ≥ 1/4"
HARDENED STRUCTURAL STEEL THICKNESS ≥ 1/4"
* REFERENCE IS MADE TO HILTI NORTH AMERICA PRODUCT TECHNICAL GUIDE 2006 EDITION.

TYPICAL FASTENER PATTERN FOR ROOF DECK 3.5" ROOF DECK

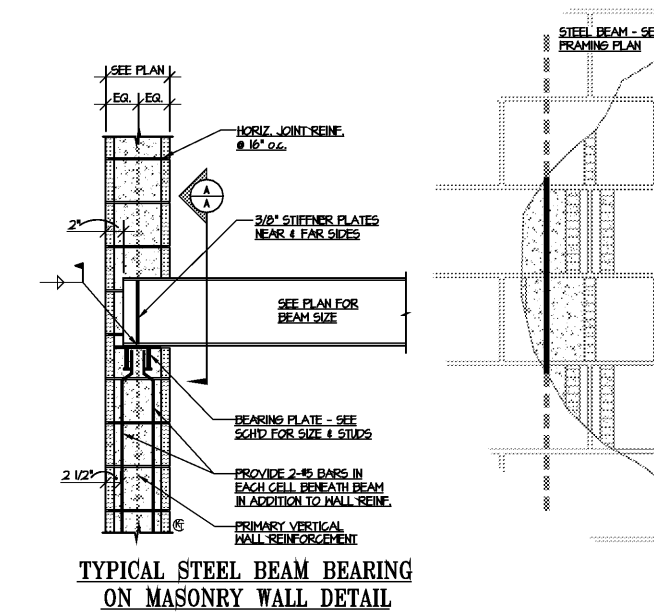


DETAIL A
SCALE: 1 1/2" = 1'-0"

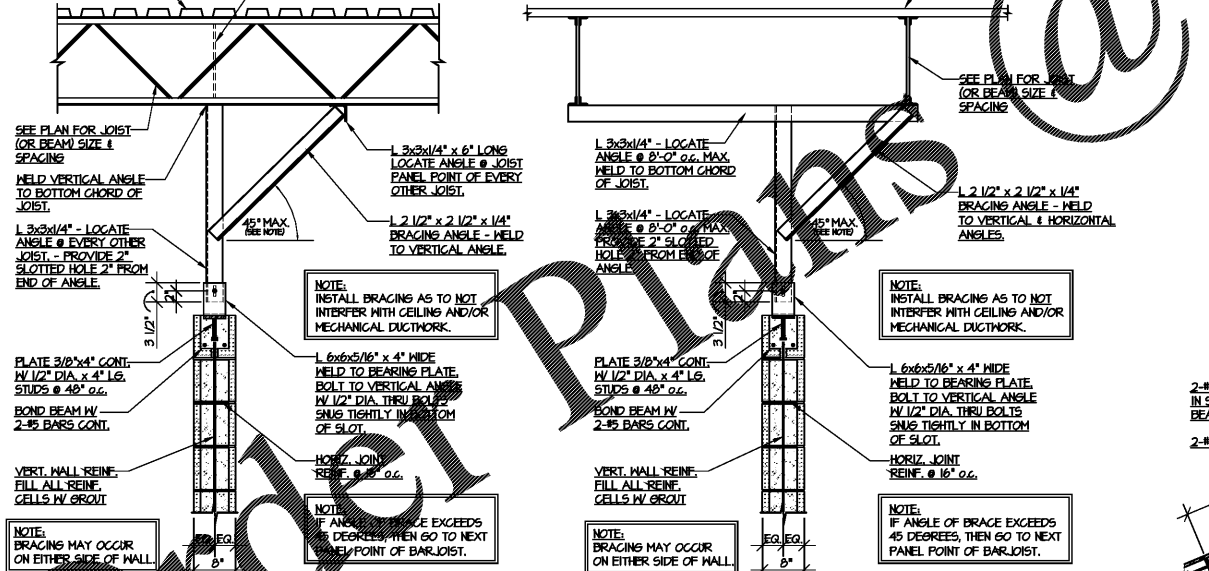


NOTE: PROVIDE THE FOLLOWING HILTI FASTENERS PER APPLICATION FOR ROOF DECK ATTACHMENT. PROVIDE 5 SIDE-LAP FASTENERS PER SPAN. SIDE-LAP FASTENERS TO BE #10 TEK-SCREWS.
FASTENER TYPE: *
X-EDN19THQ12
X-EDN22THQ12
X-ENP-19 L15
ENPH2-21 L15
BASE MATERIAL:
MISCELLANEOUS STEEL AND BARJOIST THICKNESS ≥ 3/16" AND ≤ 3/8"
BARJOIST THICKNESS ≥ 1/8" AND ≤ 1/4"
STRUCTURAL STEEL AND HEAVY BARJOIST THICKNESS ≥ 1/4"
HARDENED STRUCTURAL STEEL THICKNESS ≥ 1/4"
* REFERENCE IS MADE TO HILTI NORTH AMERICA PRODUCT TECHNICAL GUIDE 2006 EDITION.

TYPICAL FASTENER PATTERN FOR ROOF DECK

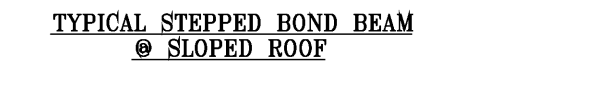


DETAIL A
SCALE: 1 1/2" = 1'-0"



TYPICAL BRACING FOR NON-LOAD BEARING INTERIOR MASONRY WALLS @ BARJOIST ROOF FRAMING

NOTE: THIS BRACING DETAIL SHALL APPLY TO INTERIOR MASONRY PARTITION WALLS SPANNING LONGER THAN 11'-0". WALLS SPANNING LESS THAN 12'-0" LONG SHALL HAVE A SINGLE BRACE @ EACH END AND @ MID-SPAN OF WALLS. BRACING SHALL BE SPACED @ 8'-0" O.C. MAX. ON WALLS SPANNING MORE THAN 12'-0" LONG.



TYPICAL STEPPED BOND BEAM @ SLOPED ROOF