

Owner:
Georgetown County
716 Prince Street
Georgetown, SC 29442

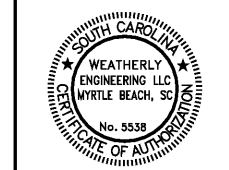
SGA ARCHITECTURE
ARCHITECTS & ENGINEERS
Pawleys Island / Charleston
245 Business Center Lane / PO Box 1859
Pawleys Island, SC 29585
Phone: 843.237.2421 / Fax: 843.237.1992
www.sgaarchitecture.com

Civil Consultant:
ETS
ENGINEERING AND TECHNICAL SERVICES
38 Cunningham Lane
Georgetown, SC 29442
Phone: 843.237-3002 Fax: 843.237-2889

MEP Consultant:
Charleston Engineering
103 E. Wagnon Creek Dr.
Charleston, SC 29412
843-762-6442
Mechanical, Heating & Electrical

Structural Consultant:
Weatherly
144 New Street (3rd Fl.) Myrtle Beach, SC 29577
Copyright © 2018. All rights reserved.
PRINTED OR ELECTRONIC DRAWINGS AND DOCUMENTATION MAY NOT BE REPRODUCED IN ANY FORM WITHOUT WRITTEN PERMISSION FROM WEATHERLY ENGINEERING.

Irrigation Consultant:



MEMBERS OF THE AMERICAN INSTITUTE OF ARCHITECTS
COPYRIGHT 2018. ALL RIGHTS RESERVED.
PRINTED OR ELECTRONIC DRAWINGS AND DOCUMENTATION MAY NOT BE REPRODUCED IN ANY FORM WITHOUT WRITTEN PERMISSION FROM SGA ARCHITECTURE.

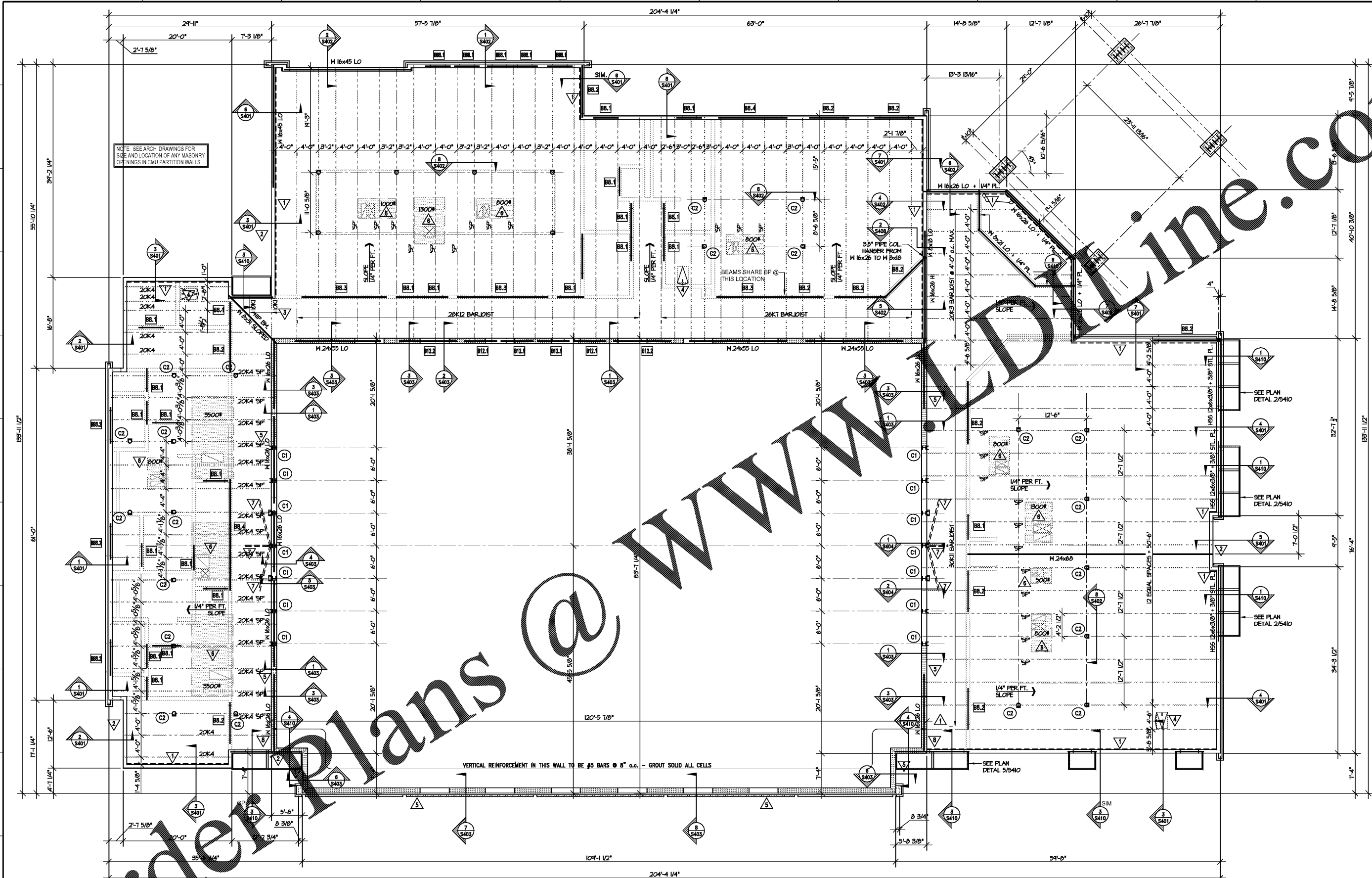
Job Number: 15017 (WE 18-126)
Date: 03/14/18
Drawn by: CMW
Checked by: DWS

Notes:
BIDDING DOCUMENTS

Revisions:

Low Roof
Framing Plan

S201



NOTE: SEE ARCH. DRAWINGS FOR SIZE AND LOCATION OF ANY MASONRY OPENINGS IN CMU PARTITION WALLS.

VERTICAL REINFORCEMENT IN THIS WALL TO BE #5 BARS @ 8" o.c. - GROUT SOLID ALL CELLS

Order Plans
Low Roof Framing Plan
SCALE: 1/8" = 1'-0"

- SHEET NOTES:
- COORDINATE W/ ARCH. DWGS. FOR T.O. ALL 8" NON-LOAD BEARING CMU PARTITION WALLS.
 - T.O. CMU EXTERIOR WALLS W/ BRICK VENEER IS +16'-8"
 - T.O. CMU EXTERIOR WALLS W/ METAL PANELS IS +16'-0"
- *SP* DENOTES SPECIAL BARJOIST FOR MECHANICAL UNIT SUPPORT. BARJOIST SUPPLIER TO COORDINATE WITH MECHANICAL SUPPLIER EXACT WEIGHTS & LOCATIONS OF UNITS.

- 1 L 5x3x1/4" (LLV) CONT. W/ 3/4" DIA. EXP. BOLTS @ EA REINF. CELL - PROVIDE 6" EMBEDMENT INTO CMU.
- 2 W 8x31 HIP BEAM - COPE EACH END OF BEAM SO AS TO ALLOW A FLAT BEARING SEAT TO BE WELDED TO BEARING PLATE IN WALL.
- 3 PROVIDE SPECIAL SLOPED SEAT AT BARJOIST WHERE BARJOIST BEARS ON SLOPED W 8x31 HIP BEAM.

- 4 ROOF HATCH - SEE ARCH. DWGS. FOR ADDITIONAL INFORMATION. SEE SHEET S400 FOR TYPICAL ROOF PENETRATION FRAMING DETAIL.
- 5 ZP 3"x16 GA. (3002P250-54) @ 4'-0" o.c. - ATTACHED HORIZONTALLY TO EXTERIOR FACE OF CMU WALL W/ 1/2" HILTI X-U 0.157" DIA. PAF @ 8" o.c. W/ 1" MIN. EMBED. - SEE ARCH. DWGS. FOR JAMB, HEAD & SILL DETAILS @ OPENINGS.
- 6 MECHANICAL UNIT. COORDINATE WITH MECHANICAL SUPPLIER EXACT WEIGHTS & LOCATIONS OF UNITS.
- 7 DBL L 6x6x3/8" DECORATIVE KICKERS FROM WT 10.5x22 UP TO W 12x40 OUTRIGGERS SEE ARCH. DWGS FOR ADDITIONAL INFORMATION - PROVIDE 3/8" TAB PLS TO UNDERSIDE OF OUTRIGGERS WELD DBL ANGLES TO TAB PLS

- 8 W 16x26 LO TO FRAME INTO SIDE OF HSS 12x6 - PROVIDE BRG PL. UNDER HSS 12x6 WHERE W 16x26 CONNECTS.

- C1 W 8x40 STUB-UP W/ 3/4"x11"x1-4" BASE PLATE W/ (4) #5 BARS x24" LONG WELDED TO B.O. PLATE.
- C2 8" dia. PIPE + M08x20 STUB-UPS TO SUPPORT SCREEN WALL. PROVIDE BASE PL. 3/4"x14"x14".