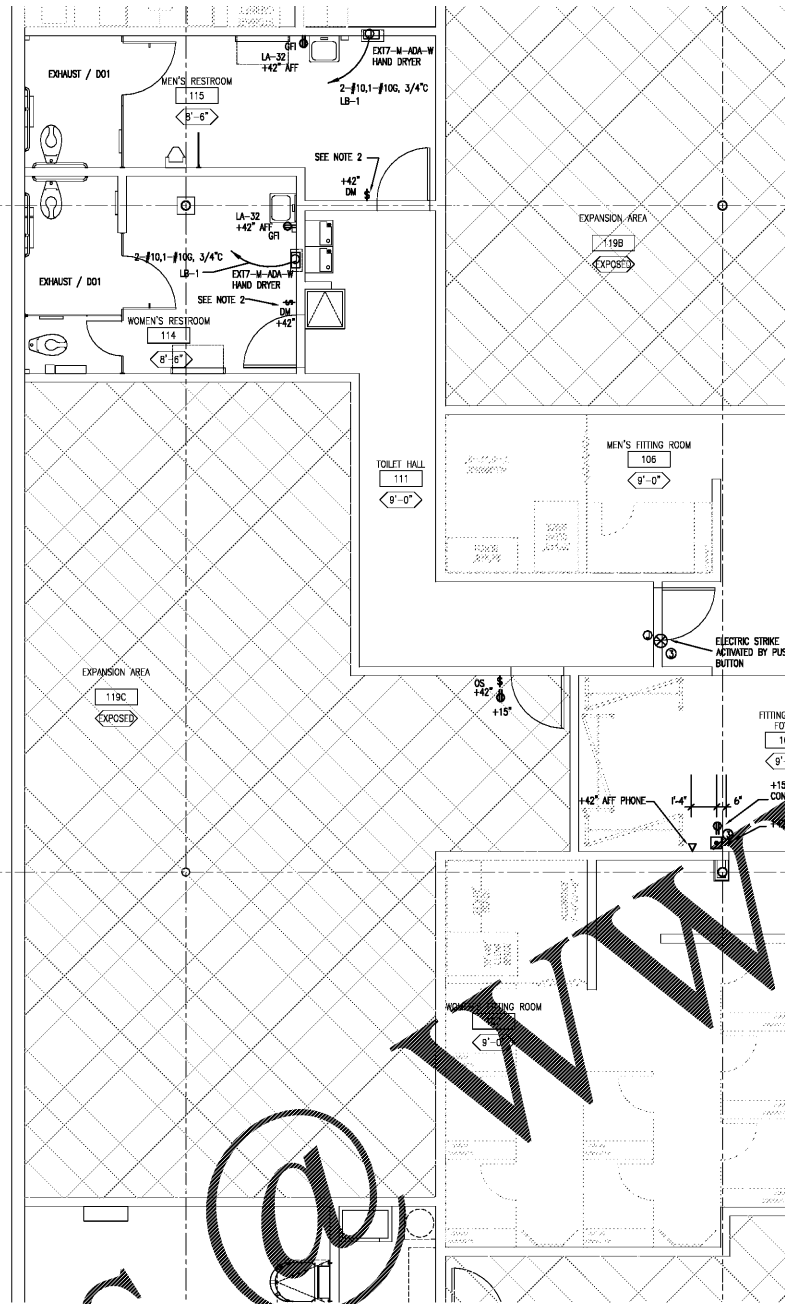
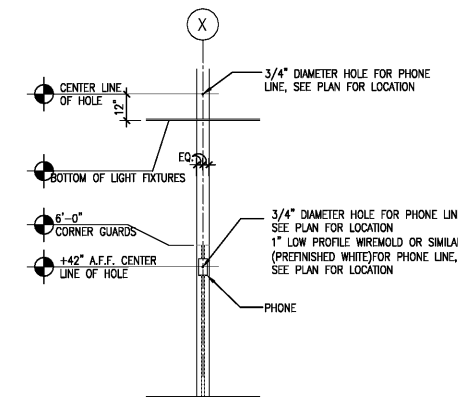


PLAN NOTES

- THIS IS A PROTOTYPICAL PLAN. SPECIFIC LOCATIONS FOR AND NUMBERS OF ELECTRICAL DEVICES AND EQUIPMENT ARE SUBJECT TO CHANGE BASED ON ROSS SITE SPECIFIC REQUIREMENTS. YOU MUST VERIFY THOSE REQUIREMENTS THROUGH THE ROSS ARCHITECTURAL REPRESENTATIVE AND THE G.C. MUST VERIFY DEVICE LOCATIONS THROUGH THE ROSS CONSTRUCTION REPRESENTATIVE PRIOR TO ELECTRICAL ROUGH-IN.
- THIS POWER, SIGNAL AND PHONE PLAN IS DIAGRAMMATIC AND ADVISORY. SUBMIT COMPLETED ELECTRICAL AND MECHANICAL DRAWINGS WITH LOAD CALCULATIONS TO ROSS CONSTRUCTION REPRESENTATIVE AND TO C&C BUILDING AUTOMATION (SEE A0.0) FOR CONTACT.
- MINIMUM SERVICE REQUIRED: SECONDARY METERED SERVICE OF 600 AMPS, 277/480 VOLTS, 3 PHASE, 4 WIRE. A PULSE DEMAND METER IS REQUIRED.
- THIS PLAN AND RELATED DETAIL PLAN ON E2.0 MAY NOT MATCH THE ROSS SITE SPECIFIC A-E1 FLOOR PLAN. IN THE EVENT THAT IT DOES NOT, THESE DRAWINGS ARE TO BE USED AS A GUIDE IN THE PREPARATION OF YOUR PROJECT SPECIFIC POWER/SIGNAL PLANS. PLEASE CONTACT THE ROSS CONSTRUCTION REPRESENTATIVE IF YOU HAVE ANY QUESTIONS. SEE ALSO SITE SPECIFIC A-E1.0 TENANT PLAN ISSUED BY ROSS STORE DESIGNER SEE SHEET A0.0 FOR CONTACT.
- EXPOSED EMT, CONDUIT AND SURFACE MOUNTED WIRING ARE NOT PERMITTED IN ANY FINISHED SPACE.
- PARTICULAR ATTENTION SHOULD BE GIVEN TO THE ACCURATE INCORPORATION OF THE ENERGY MANAGEMENT SYSTEM REQUIREMENTS INTO THE PROJECT. PLEASE CONTACT C&C BUILDING AUTOMATION (SEE SHEET A0.0 FOR CONTACT INFORMATION) AT THE INITIATION OF YOUR DOCUMENT PREPARATION PHASE FOR ADDITIONAL COMMENTS. WHEN DRAWINGS ARE READY FOR FINAL APPROVAL, PLEASE SEND ELECTRICAL DRAWINGS AS AN AUTOCAD 2004 SINGLE FILE FORMAT ELECTRONIC BACKGROUND TO C&C FOR PREPARATION OF EMS DRAWINGS.
- PROVIDE A WALL MOUNTED UTILITY LIGHT AND SERVICE POWER RECEPTACLE IN THE ENCLOSED AREA OF THE CANOPY BEHIND THE SIGN WITH THE LIGHT SWITCH CLOSE TO THE ACCESS DOOR AND CLEARLY VISIBLE FROM THAT LOCATION.
- IF LOCAL MUNICIPAL REGULATIONS/CODES REQUIRE LOW VOLTAGE ELECTRICAL WIRING (TELEPHONE, SIGNAL, MUSIC/PAGING SPEAKERS, ETC) TO BE RUN IN EMT OR RIGID CONDUIT, THEN THE SCOPE OF WORK IS TO INCLUDE THE INSTALLATION OF THAT CONDUIT. IF SO YOU MUST OBTAIN AND THE CONTRACTOR MUST VERIFY THE REQUIRED LAYOUT OF THE PHONES AND MUSIC/PAGING SYSTEM FROM THE ROSS CONSTRUCTION MANAGER.
- THE BOSTON RETAIL FASTLANE MODULAR WIRING SYSTEM IS A UL LISTED WIRING SYSTEM RECOGNIZED BY THE NATIONAL ELECTRICAL CODE. THIS SYSTEM IS COMPRISED OF TWO SEPARATE COMPONENT PACKAGES, EACH PURCHASED AND INSTALLED SEPARATELY:
 - PACKAGE #1 IS PURCHASED AND INSTALLED BY THE G.C. AND CONSISTS OF TWO OR MORE FASTLANE MAIN DISTRIBUTION BOXES (MDBS) MOUNTED ABOVE THE HUNG CEILING AND CONNECTED TO THE ELECTRICAL CIRCUITS PROVIDED IN THE HOMERUN JUNCTION BOX. THESE CIRCUITS MUST CONTAIN THE ISOLATED GROUND (IG OR "CLEAN") CIRCUITS (MINIMUM), THE GENERAL PURPOSE (GP OR "DIRTY") CIRCUITS (MINIMUM) AND ONE JEWELRY CASE LIGHTING CIRCUIT THAT MUST BE ROUTED THROUGH THE ENERGY MANAGEMENT SYSTEM (EMS) VIA OUTPUT #2. LARGER FORMAT STORES MUST HAVE ADDITIONAL IG AND GP CIRCUITS. THE FASTLANE MDBS EACH HAVE A PRE-WIRED 25' TYPE MC CABLE HOMERUN, CONTAINING #10 AWG WIRING CONDUCTORS FOR CONNECTION TO THE HOMERUN J-BOX CIRCUITS. THE G.C. IS ALSO RESPONSIBLE FOR VERIFYING POWER TO THE MDB PORTS AFTER CONNECTIONS ARE MADE. THE POWER TO THESE CIRCUITS MUST BE LIVE AFTER TURNOVER. STORE FORMATS WITH IN-LINE REGISTERS MUST HAVE TWO MDBS LOCATED AT EACH POWER POLE LOCATION.
 - PACKAGE #2 IS PURCHASED AND INSTALLED BY THE ROSS STORE PLANNING MILLWORK VENDOR AND IS COMPRISED OF ALL POWER POLES, WIRING AND RECEPTACLE DEVICES LOCATED IN THE MILLWORK (CHECKOUT COUNTERS, JEWELRY CASES AND CUSTOMER SERVICE COUNTERS). THE MILLWORK VENDOR IS RESPONSIBLE FOR MAKING FINAL PLUG-IN CONNECTIONS TO THE FASTLANE MDB PORTS. CONTACT BOSTON RETAIL WITH QUESTIONS (SEE SHEET A0.0 FOR CONTACT INFO).



ENLARGED TOILET/ DRESSING ROOM PLAN
E3.1 SCALE: 1/4"=1'-0"



3 PHONE @ COLUMN
E3.1 SCALE:

POWER, SIGNAL AND TELEPHONE LEGEND

- PRE-FINISHED POWER POLE PROVIDED AS PART OF FRONT END MODULAR SYSTEM PROVIDED AND INSTALLED BY ROSS FIXTURE VENDOR.
- DUPLX RECEPTACLE, 15" A.F.F. U.O.N.
- 20A 20 AMP INDEPENDENT DEDICATED CIRCUIT DUPLX RECEPTACLE, 15" A.F.F. U.O.N.
- GFCI GROUND FAULT RECEPTACLE, 44" A.F.F. U.O.N.
- 4-PLEX RECEPTACLE, MOUNTING HEIGHT AS NOTED
- 20 AMP IN FLOOR SAFETY DUPLX OUTLET WITH LOCKING BRASS FLUSH HINGED COVER (INDEPENDENT DEDICATED CIRCUIT, 10 GAUGE WIRE)
- LIGHT SWITCH LOCATION, 42" A.F.F.
- OCCUPANCY SENSOR - WAITSTOPPER #PW-100-G
- VACANCY SENSOR - WAITSTOPPER #PW-100-G SET FOR "MANUAL ON" NO WIRELESS SENSORS ALLOWED
- CEILING MOUNTED OCCUPANCY SENSOR - WAITSTOPPER #CI-355 CONNECT TO WALL SENSOR GROUND ROD
- SURGE PROTECTED RECEPTACLE PAS5 & SEYMOUR 20A DUPLX/MODEL IG62620SP ORANGE
- DIMMER SWITCH 0-10V LUTRON #N51V-DV-XX W/ COVER PLATE. NOTE: ELECTRICAL CONTRACTOR TO RUN 0-10V TWISTED PAIR #18 PLENUM RATED FROM DIMMER SWITCH TO EACH DIMMING DRIVER FOR THE SAME CIRCUIT. REFER TO MFR'S. WIRING DIAGRAM
- TELEPHONE 36" AT MANAGERS, 58" A.F.F. AT SALES FLOOR/SEE 3/E3.0 FOR ROUGH-IN, U.O.N. (NOTE: SALES FLOOR PHONES ARE NOT PUBLIC PHONES AND AS SUCH MAY NOT BE REQUIRED TO BE ACCESSIBLE; ARCHITECT OF RECORD MUST VERIFY). LOCATIONS SHOWN FOR CONCEPT AND MUST BE VERIFIED THROUGH THE ROSS CONSTRUCTION REPRESENTATIVE PRIOR TO INSTALLATION. PROVIDE PLASTER RING AND CONDUIT WITH PULL-STRING STUBBED TO ABOVE CEILING (TYPICAL GWB INSTALLATION OR SIMILAR PER MOUNTING CONDITION). COLUMN MOUNTED DEVICES ARE TO BE FED CONCEALED FROM WITHIN TUBE, CONFIRM LOCATIONS AND PROVIDE FEED HOLDS WITH PULL WIRES. ROSS INSTALLER WILL PROVIDE AND INSTALL WIRE, JACK AND PHONE.
- DATA OUTLET, MOUNTING HEIGHT AS NOTED, (VERIFY LOCATIONS PRIOR TO INSTALLATION). PROVIDE PLASTER RING AND CONDUIT WITH PULL-STRING STUBBED TO ABOVE CEILING (TYPICAL GWB INSTALLATION OR SIMILAR PER MOUNTING CONDITION). ROSS INSTALLER WILL PROVIDE AND INSTALL WIRE & JACK.
- MOUNT BUZZER (OR RINGER) ABOVE CEILING AT CUSTOMER SERVICE COUNTER AND OFFICE HALL. WALL MOUNTED (+8"-0" A.F.F.) ALL OTHER LOCATIONS. CONNECT TO PUSH BUTTON OF MATCHING NUMBER. SOUND OF THE BUZZER (OR RINGER) FOR NUMBER 1 BUTTON MUST BE DIFFERENT THAN THAT FOR NUMBER 2 BUTTON. BUZZER (OR RINGER) SOUND LEVELS MUST BE ADJUSTABLE AND BE AUDIBLE WITHIN 75-FEET OF LOCATION, 24 VOLT SYSTEM.
- T.T.B. TELEPHONE TERMINAL BOARD
- PUSH-BUTTON +48" A.F.F., USE WEATHER-TIGHT STAINLESS STEEL PUSH-BUTTON AND STAINLESS STEEL FASTENERS, CARLON #DH1201, CONNECT TO MATCHING BUZZER NUMBER
- VON DUPRIN MODEL 6211 ELECTRIC STRIKE WITH LOCKNETICS (SCHLAGE) 701 RD MOMENTARY WALL SWITCH (800) 950-4573.
- +48" SECURITY KEYPAD. PROVIDE J-BOX WITH 3/4" CONDUIT STUBBED TO ACCESSIBLE LOCATION ABOVE CEILING WITH PULL-STRING. KEYPAD AND WIRING BY ROSS INSTALLER.
- JUNCTION BOX, MOUNTING HEIGHT AS NOTED. ALL JUNCTION BOXES ARE TO BE INSTALLED BY G.C.
- TRANSFORMER, MOUNTING HEIGHT AS NOTED
- SURFACE MOUNTED DOME CAMERA - JUNCTION BOX TO BE INSTALLED BY GENERAL CONTRACTOR WITH CONDUIT AND PULL STRING TO ACCESSIBLE LOCATION AT INTERIOR OF STORE.
- FIRE DEPARTMENT ANNUNCIATOR
- HURRICANE SHUTTER CENTER PAD
- AC UNIT SMOKE DETECTOR KEY SWITCH

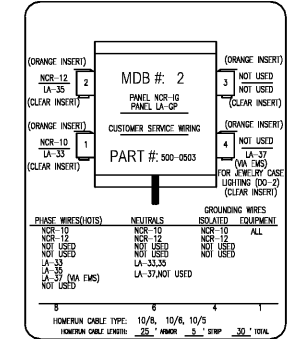
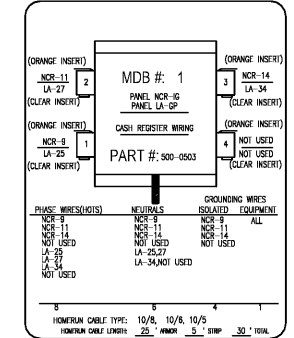
SWITCHING NOTES

- ELECTRICAL CONTRACTOR TO RUN 0-10V TWISTED PAIR #18 PLENUM RATED FROM DIMMING MODULE (DM) TO EACH DIMMING DRIVER, -24X FIXTURES DRIVER PART # OIS0M-MAX. 100 DRIVERS PER OUTPUT. -STRIP FIXTURES DRIVER PART # OI80M-MAX. 250 DRIVERS PER OUTPUT. SEE EMS PRINTS FOR DIMMING ZONING.
- ELECTRICAL CONTRACTOR TO RUN 0-10V TWISTED PAIR #18 PLENUM RATED FROM DIMMER SWITCH TO EACH DIMMING DRIVER FOR THE SAME CIRCUIT. REFER TO MANUFACTURER'S WIRING DIAGRAMS. DIMMER SWITCH TO DIM NORMAL FIXTURES ONLY IN EACH ROOM WITH DIMMER SWITCH.

MODULAR SYSTEM NOTES & LEDGEND

- BOSTON GROUP MAIN DISTRIBUTION BOXES TOGETHER WITH CABLING FOR CONNECTION TO CIRCUITS AT HOMERUN JUNCTION BOX ARE TO BE ORDERED BY G.C. FROM BOSTON GROUP (SEE SHEET A0.0 FOR CONTACT INFO).
- FASTLANE NOTE: ONE FASTLANE MAIN DISTRIBUTION BOX ACCOMMODATES UP TO FOUR REGISTERS. ONE ISOLATED GROUND (CLEAN) CIRCUIT AND ONE GENERAL PURPOSE (DIRTY) CIRCUIT (CONSIDERED ONE SET OF CIRCUITS) IS REQUIRED FOR EACH REGISTER. IF THE REGISTER/COUNTER FORMAT IS DIFFERENT FROM PROTOTYPE, AN ADJUSTMENT/PLATE SET IS ALWAYS REQUIRED FOR FUTURE EXPANSION OVER AND ABOVE THE "IN USE" REQUIREMENTS STATED ABOVE (5 SETS OF CIRCUITS AND ONE JEWELRY CASE LIGHTING CIRCUIT). NOTE THAT MAIN DISTRIBUTION BOX #2 CONTAINS A CIRCUIT FOR JEWELRY CASE LIGHTING (DO-2) IN-LINE REGISTERS WHEN SHOWN ON THE APPROVED A-E1 PLAN. EACH SET OF CIRCUITS CAN FEED UP TO THREE CONTIGUOUS CASH REGISTERS THAT ARE IN-LINE WITH EACH OTHER.
- FASTLANE NOTE: SEE ROSS A-E1 PLAN AND CORRESPONDING BOSTON GROUP SITE SPECIFIC WIRING LOCATION AND CIRCUIT PLAN FOR NUMBER AND LOCATION OF REQUIRED SITE SPECIFIC WIRE. CONFIRM THAT THE APPROVED A-E1 PLAN IS IN USE AND THAT THE TWO PLANS CONFORM. IF TWO PLANS DO NOT CONFORM IMMEDIATELY NOTIFY THE ROSS C&C FOR INSTRUCTIONS.
- DISTRIBUTION BOXES ARE TO BE SECURELY SUSPENDED WITH LATENT WIRING 12" ABOVE CEILING AT THE LOCATIONS SHOWN IN THE APPROVED A-E1 PLAN. MINIMUM CLEARANCE ABOVE CEILING IS 12" ABOVE CEILING. FOR STORES WITH APPROVED (SEE A0.0) DISTRIBUTION BOXES ARE TO BE SECURELY SUPPORTED TO THE UNDERSTORY ROOF STRUCTURE.
- EACH MAIN DISTRIBUTION BOX IS PRE-WIRED AND HAS A TYPE MC 10' HOMERUN CABLE TO BE ROUTED TO A HOMERUN JUNCTION BOX. THIS CABLE IS TO BE ORDERED FROM BOSTON GROUP FOR ADDITIONAL INFORMATION SEE SHEET A0.0.
- ALLOW A LEAD TIME OF ORDER OF 4 WEEKS.
- COORDINATE INSTALL WITH ROSS CONSTRUCTION REPRESENTATIVE.
- IF THE PREVIOUS IS NOT ACCESSIBLE TO LOCAL JURISDICTION, THE POWER SHALL BE INSTALLED WITH LOCAL CODES ACCEPTABLE TO LOCAL AND BUILDING WIRE.
- BOSTON GROUP MAIN DISTRIBUTION BOX #1 (BY G.C.) ISOLATED GROUND (CLEAN) PURPOSE, MOUNTED AT 12" ABOVE CEILING WITH 25' TYPE MC HOMERUN CABLE CONTAINING 19-#10AWG CONDUCTORS. DEDICATED CIRCUITS (2 CLEAN AND 3 DIRTY MINIMUM): NCR 10 (REGISTER CLEAN), NCR 11 (REGISTER DIRTY), LA 25 (DIRTY), LA 26 (DIRTY), LA 27 (DIRTY), LA 28 (DIRTY), LA 29 (DIRTY), LA 30 (DIRTY), LA 31 (DIRTY), LA 32 (DIRTY), LA 33 (DIRTY), LA 34 (DIRTY).
- BOSTON GROUP MAIN DISTRIBUTION BOX #2 (BY G.C.) ISOLATED GROUND (CLEAN) PURPOSE, MOUNTED AT 12" ABOVE CEILING WITH 25' TYPE MC HOMERUN CABLE CONTAINING 19-#10AWG CONDUCTORS. DEDICATED CIRCUITS (2 CLEAN AND 3 DIRTY MINIMUM): NCR 10 (REGISTER CLEAN), NCR 11 (REGISTER DIRTY), LA 25 (DIRTY), LA 26 (DIRTY), LA 27 (DIRTY), LA 28 (DIRTY), LA 29 (DIRTY), LA 30 (DIRTY), LA 31 (DIRTY), LA 32 (DIRTY), LA 33 (DIRTY), LA 34 (DIRTY).
- HOMERUN JUNCTION BOX (BY G.C.) POWER POINT FOR HOMERUN CABLES WIRE, MOUNTED AT 12" ABOVE CEILING (11 CIRCUITS MINIMUM, SEE A-E1). G.C. TO CONNECT FASTLANE MAIN DISTRIBUTION BOX MAIN CABLES TO J-BOX W/ ELECTRICAL CONNECTIONS AND VERIFY POWER TO MAIN DISTRIBUTION BOX PORTS AND PINS.
- HOMERUN CIRCUITS BY G.C.: NCR 9, NCR 10, NCR 11, NCR 12, NCR 14 (REGISTER CLEAN), LA 25, LA 26, LA 27, LA 28, LA 29, LA 30, LA 31, LA 32, LA 33, LA 34 (REGISTER DIRTY), LA 35 (JEWELRY CASE LIGHTING VIA THIS OUTPUT #2) (SEE MODULAR SYSTEM NOTES & LEGEND, BOSTON GROUP SITE SPECIFIC WIRING LOCATION AND CIRCUIT PLAN)

MAIN DISTRIBUTION BOX CIRCUITING



ANTHONY CASSATA ARCHITECT

dd's DISCOUNTS

OWNER: ROSS STORES
5130 HACIENDA DRIVE DUBLIN, CA 94568

PROJECT: dd's DISCOUNTS STORE #5352 (GREENVILLE, SC)

WHITE HORSE PLAZA
6119 WHITE HORSE ROAD GREENVILLE, SC 29611

BASED ON DD'S 22X TURKEY - EXISTING PROTOTYPE DATED MARCH, 2018

DRAWING TITLE:	TOILET ROOM PLAN, NOTES & MDB DETAILS
REV. NO.:	DATE:
1	02/02/18 FOR ROSS REVIEW
2	03/02/18 FOR ROSS MARK-UPS

EXPIRES: 6/30/2018

COPYRIGHT: ALL DRAWN AND WRITTEN INFO APPEARING HEREIN SHALL NOT BE REPRODUCED, COPIED, OR OTHERWISE WITHOUT WRITTEN CONSENT.

PFDA JOB: #16027
SCALE: AS NOTED
DRAWN BY: CHECKED BY:

SHEET NUMBER E3.1

Order Plans