

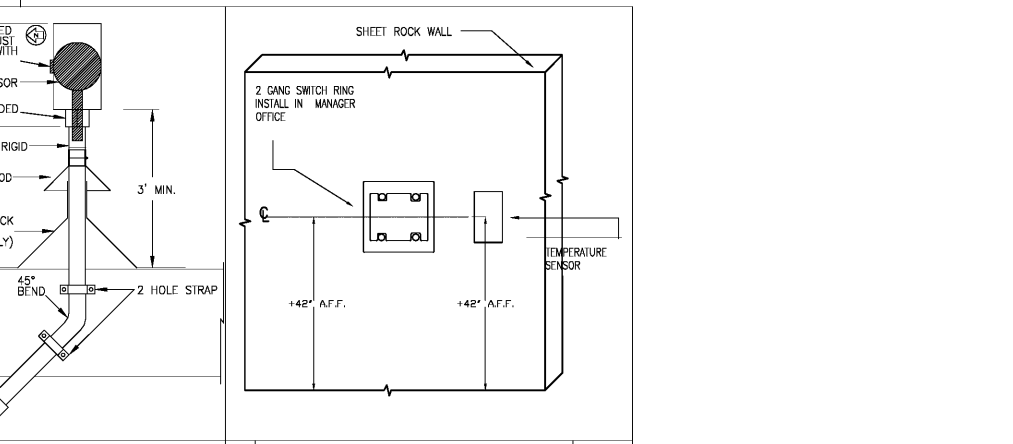
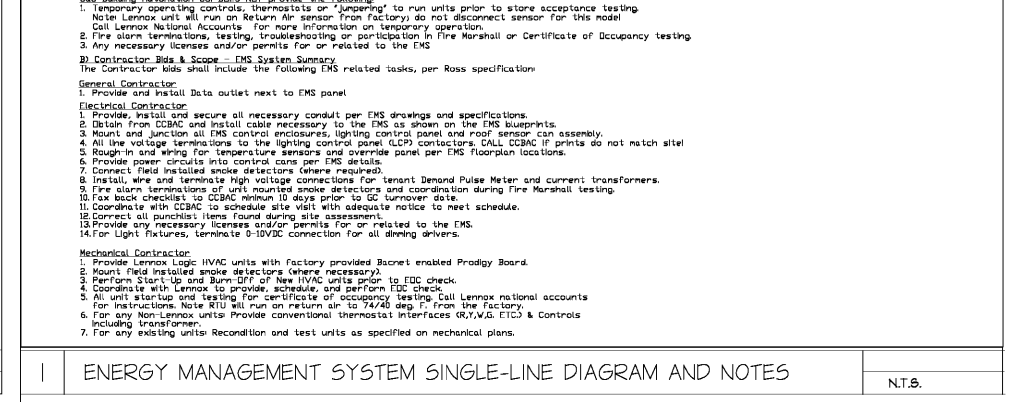
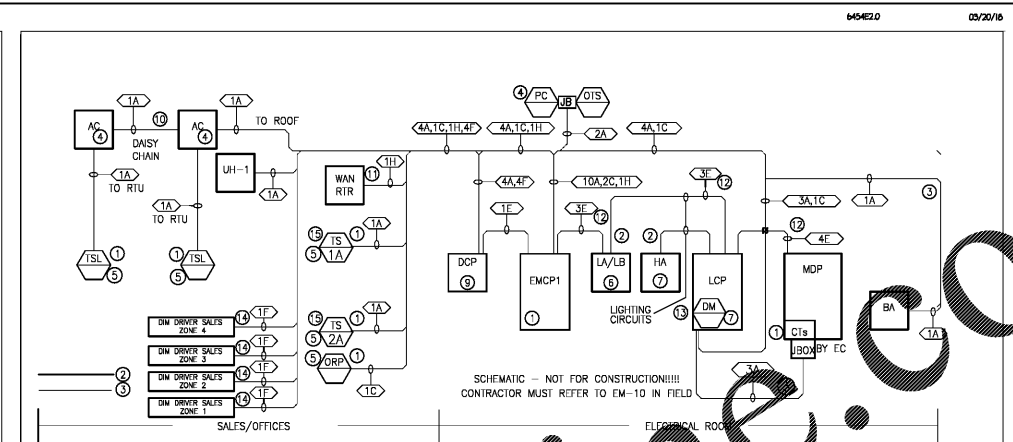
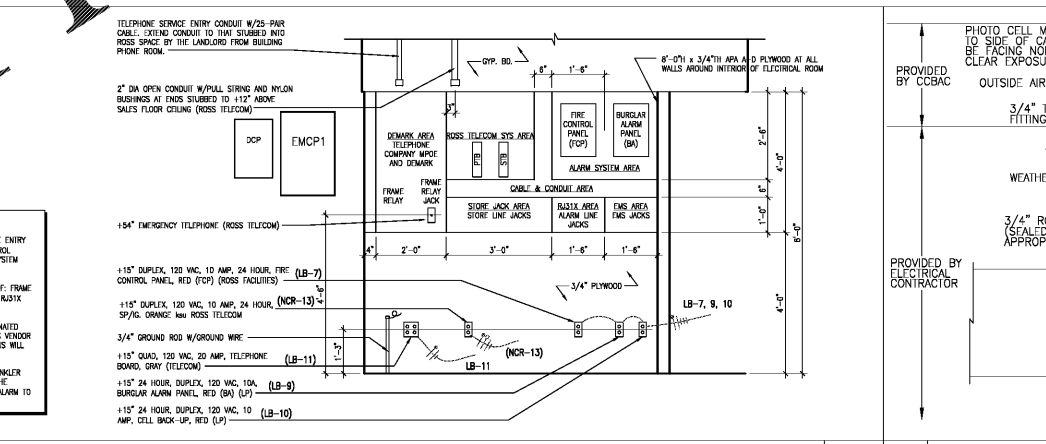
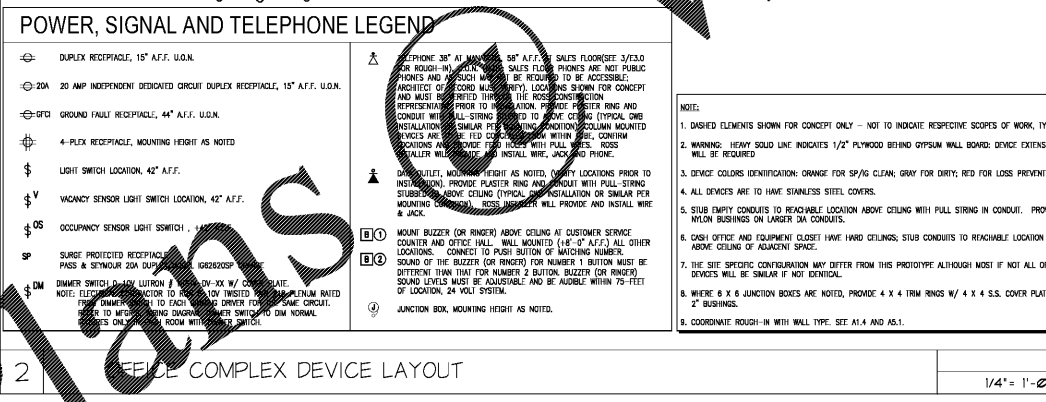
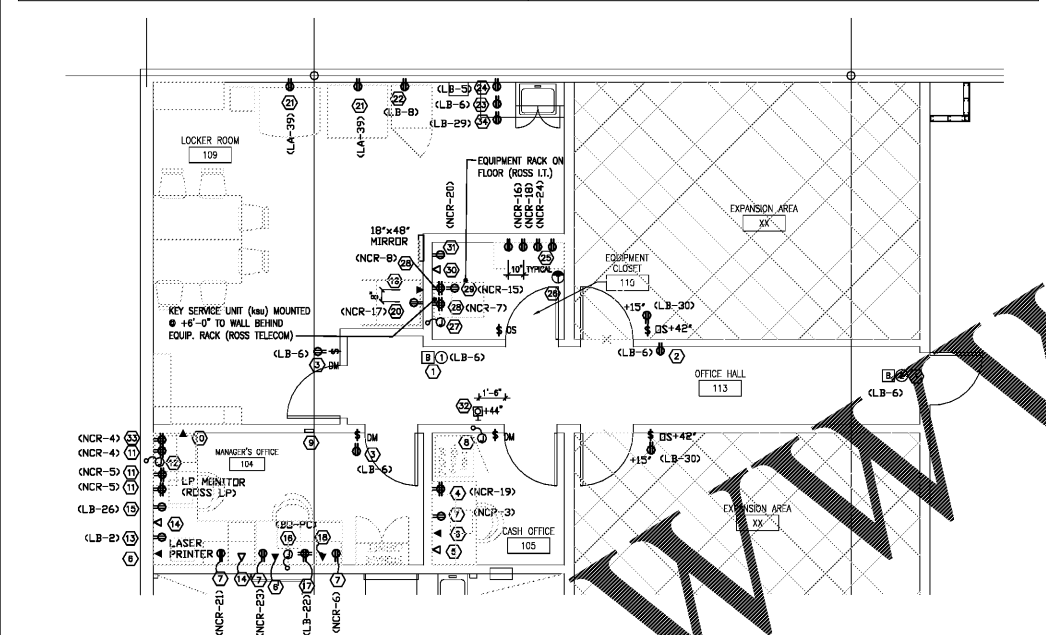
REFERENCE PAGE	ITEM MUST APPEAR ON PLANS (YES/NO)	ELECTRICAL TYPICAL COMMENTS AND CHECKLIST USE, REVIEW & COMPLETION IS MANDATORY FOR ALL ROSS PROJECTS. CONTACT ROSS WITH ANY QUESTIONS.	SIGN-OFF REQUIRED FOR SUBMITTAL	Architect	Engineer	Reviewer
A2.0	YES	LIGHTING PLAN SPECIFY ALL LIGHTING FIXTURES TO BE PROVIDED FROM AMERICAN WHOLESALE LIGHTING, WITHOUT SUBSTITUTION.	CKE			
E10	YES	INDICATE THE VOLTAGE VALUE FOR ALL THE LIGHT FIXTURES IN THE LIGHTING FIXTURE LEGEND.	CKE			
A2.0	YES	PROCESSING ROOM LIGHTING FIXTURE AND MODEL NUMBERS: PER LIGHTING LEGEND.	CKE			
E10	YES	PROCESSING ROOM LIGHTING MUST REQUIRE ONE CIRCUIT (OD1) AND ONE DIMMING SWITCH AT THE INTERIOR ENTRY DOOR.	CKE			
E10	YES	DO NOT INDICATE ANY WALL SWITCHES IN THE FITTING ROOMS AND Foyer AREAS, IF DIMMING SWITCH REQUIRED, SHOW IN ELECTRICAL RM.	CKE			
E10	YES	SHOW ONE DIMMER SWITCH IN THE MANAGER'S OFFICE AND IN LOCKER ROOM.	CKE			
E10	YES	CASH OFFICE: SHOW ONE DIMMER SWITCH IF THERE IS AN EMERGENCY/ANGLE LIGHT FIXTURE.	CKE			
E10	YES	RESTROOMS: SHOW ONE DIMMER SWITCH TO CONTROL THE LIGHTS.	CKE			
E10	YES	OFFICES, LOCKER ROOM, AND HALL FIXTURES NEED TO HAVE SEPARATE DEDICATED DIMMER SWITCHES.	CKE			
E10	YES	MANAGER OFFICE AND EQUIPMENT CLOSET: USE THE NIGHT LIGHT CIRCUIT TO FEED THE SINGLE FIXTURE. SHOW WALL MOUNTED OCCUPANCY SENSOR (ONS).	CKE			
E10	YES	TYPICALLY (1) 120VAC CIRCUIT IS REQUIRED FOR SIGNALING. VERIFY AND ADD CIRCUITS AS NECESSARY. ALL SIGNALING CIRCUIT VOLTAGE MUST BE 120VAC SINGLE PHASE. ALL SIGNALING CIRCUITS MUST BE ISOLATED - NO SHARED COMMONS OR NEUTRALS. ALL SIGNALING CIRCUITS OVER SOFT FROM PANEL MUST USE GAUGE OF WIRE REQUIRED BY NEC.	CKE			

E10	YES	VERIFY THAT THE WIRE SIZE FOR ALL LIGHTING CONTROLLED VIA FMS DOES NOT EXCEED 10 AWG.	CKE			
E10	YES	FIELD ALL WIRING TO BE INSTALLED FROM SEPARATE CIRCUIT, SWITCHED VIA LIGHTING CONTROL PANEL (LCP), SEPARATE HOT TO BATTERY BACKUP.	CKE			
E10	YES	VERIFY ALL CIRCUITS SHOWN ON THE LIGHTING PLAN MATCHES WHAT IS INDICATED IN THE PANEL SCHEDULES.	CKE			
E10	YES	ALL LIGHTING CIRCUITS TO HAVE SEPARATE NEUTRALS (NO SHARED NEUTRALS).	CKE			
E10	YES	EXTERIOR LIGHTS NOT ABOVE DOORS TO BE CONTROLLED BY OMS.	CKE			

M1.0	YES	POWER PLAN LABEL ALL A/C UNITS PER THE ROSS PROTOTYPE SHEET M1.0.	CKE			
E2.0	YES	INDICATE BOTH SUPPLY AND RETURN SMOKE DETECTORS ON ALL A/C UNITS. ADD SMOKE DETECTORS WILL BE FACTORY PROVIDED AND INSTALLED ON APPLICABLE LENOX UNITS. FIELD PROVIDED BY MECHANICAL CONTRACTOR FOR SMALLER UNITS, AND WROD BY FIRE ALARM OR ELECTRICAL CONTRACTOR. TESTING AND DEMONSTRATION WILL BE THE RESPONSIBILITY OF THE FIRE ALARM OR MECHANICAL CONTRACTOR, INCLUDING FIRE MARSHAL ASSISTANCE TESTS.	CKE			
E2.0	YES	INDICATE GFCI OUTLET CIRCUITING SEPARATE FROM UNIT POWER ON ALL A/C UNITS.	CKE			
E2.0	YES	SHOW LOCATION OF EXTERIOR SENSOR ROOF/RAIN ASSEMBLY ON ROOF ABOVE ELECTRICAL ROOM. REFER TO DETAIL 4 OF SHEET E2.0.	CKE			
E2.0	YES	IF POWER EXHAUST IS NECESSARY, INDICATE AN EXHAUST FAN IN ELECTRICAL ROOM TO RUN VIA LINE VOLTAGE THERMOSTAT TO BE PROVIDED AND INSTALLED BY MECHANICAL CONTRACTOR FOR SMALLER UNITS, AND WROD BY MECHANICAL CONTRACTOR FOR SMALLER UNITS, AND WROD BY MECHANICAL CONTRACTOR. TESTING AND DEMONSTRATION WILL BE THE RESPONSIBILITY OF THE FIRE ALARM OR MECHANICAL CONTRACTOR, INCLUDING FIRE MARSHAL ASSISTANCE TESTS.	CKE			
E2.0	NO	DO NOT SHOW ANY TEMPERATURE OR CO2 SENSORS IN THE OFFICE AREAS, WOMEN'S FITTING ROOMS, PROCESSING ROOM, AND SALES FLOOR. ADD NOTE TO PLAN TEMPERATURE & CO2 SENSORS NOT SHOWN ON MECHANICAL OR ELECTRICAL PLANS. SEE EMS PLANS FOR EXACT LOCATION. CONTACT EMC BUILDING AUTOMATION (650) 292-7450. CLEARLY INDICATE WHICH CIRCUITS FEED THE WATER COOLER/ELECTRIC DRINKING FOUNTAIN, EXHAUST FANS, AND ROOF TOP UNIT.	CKE			
E2.0	YES	SPECIFY A 2-GANG PLASTER RING VERTICAL FOR THE EMS OVERHEAD PANEL IN THE MANAGER'S OFFICE (M104).	CKE			
E2.0	YES	INDICATE JEWELRY CASE LIGHTING ON THE SAME CIRCUIT AS THE FRAGRANCE CASE TO BE CONTROLLED BY EMS DO-2.	CKE			
E2.0	YES	INDICATE AN ELECTRICAL ROOM DIAL SWITCHING ALL PANELS IN THEIR RESPECTIVE LOCATIONS.	CKE			
E2.0	YES	INDICATE TELEPHONE DATA OUTLET NEXT TO EMCP1 IN THE ELECTRICAL ROOM.	CKE			

E2.0	YES	ONE-LINE DIAGRAM AND PANEL SCHEDULES SINCE THE CIRCUITS FEEDING THE FITTING ROOMS, Foyer AREAS, AND RESTROOMS, EACH GROUP OF DIMMING DRIVERS ARE CONTROLLED FROM THE SCHEDULE OUTPUT DO-2.	CKE			
E2.0	YES	SINCE THE CIRCUITS FEEDING THE SALES FLOOR, EACH GROUP OF DIMMING DRIVERS ARE CONTROLLED FROM THE SCHEDULE OUTPUT DO-2.	CKE			
E10	YES	SINCE THE CIRCUITS FEEDING THE OFFICES, EACH GROUP OF DIMMING DRIVERS ARE CONTROLLED FROM THE SCHEDULE OUTPUT DO-1.	CKE			
E10	YES	SHOW PANEL LCP-1 (SINGLE POLE 20A 120V CIRCUIT BREAKERS ACROSS PHASES A, B, & C) AND PANEL EMCP-1 IN THE SINGLE LINE DIAGRAM AND PANEL SCHEDULES.	CKE			
E2.0	YES	A TENANT DEMAND PULSE METER (DM) IS REQUIRED, SEPARATE AND ADDITIONAL TO THE UTILITY METER. INSTEAD OF THE PULSE METER OUTPUT OPTION ON THE UTILITY METER, THIS DEVICE IS A COMBINED PULSE METER AND THREE PHASE POWER MONITOR FED FROM THE SINGLE POLE 120V CIRCUIT FROM THE MDP PANEL. CURRENT TRANSFORMERS CREATING THE SIGNAL MUST LOCATE AROUND INCOMING CONDUCTORS PRIOR TO OR AT THE MAIN DISTRIBUTION PANEL. CURRENT TRANSFORMERS FOR BUSSED FEEDERS MUST BE FACTORY INSTALLED BY OEM MANUFACTURER. CURRENT TRANSFORMERS FOR CABLE FEEDERS WILL BE INSTALLED BY THE ELECTRICIAN.	CKE			
E10	YES	ALL LIGHTING CIRCUITS CONTROLLED VIA EMS SHALL NOT EXCEED 20A CIRCUIT BREAKERS.	CKE			
E10	YES	CLEARLY LABEL ALL CIRCUITS.	CKE			
E10	YES	VERIFY AND COORDINATE THE VOLTAGE REQUIREMENTS FOR ALL THE A/C UNITS WITH THE MECHANICAL ENGINEER.	CKE			
E10	YES	VERIFY THE WATER HEATER SIZE; IF THE WATER HEATER REQUIRES A CIRCUIT BREAKER SIZE GREATER THAN 20A PROVIDE AN AUXILIARY CONTROL INTERFACE FOR CONTROL THROUGH A 30A CONTRACTOR VIA ENERGY MANAGEMENT SYSTEM.	CKE			

CODED NOTES
① 110' DUPLEX (100 W/4), GRAY, VENDING, DD1, (ROSS OPERATIONS), GFCI CIRCUIT BREAKER
② 115' DUPLEX (6.5A) GRAY, RETROFIT/ROOF (ROSS OPERATIONS), GFCI CIRCUIT BREAKER
③ 115' DUPLEX, GRAY, CONVENIENCE (ON WALL BELOW SWITCH)
④ 138' 3P/4G QUAD, ORANGE (ROSS OPERATIONS)
⑤ 138' 3P/4G QUAD, ORANGE (ROSS OPERATIONS)
⑥ 138' 3P/4G QUAD, ORANGE (ROSS OPERATIONS)
⑦ 138' 3P/4G QUAD, ORANGE (ROSS OPERATIONS)
⑧ 138' 3P/4G QUAD, ORANGE (ROSS OPERATIONS)
⑨ 138' 3P/4G QUAD, ORANGE (ROSS OPERATIONS)
⑩ 138' 3P/4G QUAD, ORANGE (ROSS OPERATIONS)
⑪ 138' 3P/4G QUAD, RED, DEDICATED 24 HOUR LP CIRCUIT
⑫ 138' 3P/4G QUAD, RED, DEDICATED 24 HOUR LP CIRCUIT
⑬ 138' 3P/4G QUAD, RED, DEDICATED 24 HOUR LP CIRCUIT
⑭ 138' 3P/4G QUAD, RED, DEDICATED 24 HOUR LP CIRCUIT
⑮ 138' 3P/4G QUAD, RED, DEDICATED 24 HOUR LP CIRCUIT
⑯ 138' 3P/4G QUAD, RED, DEDICATED 24 HOUR LP CIRCUIT
⑰ 138' 3P/4G QUAD, RED, DEDICATED 24 HOUR LP CIRCUIT
⑱ 138' 3P/4G QUAD, RED, DEDICATED 24 HOUR LP CIRCUIT
⑲ 138' 3P/4G QUAD, RED, DEDICATED 24 HOUR LP CIRCUIT
⑳ 138' 3P/4G QUAD, RED, DEDICATED 24 HOUR LP CIRCUIT
㉑ 138' 3P/4G QUAD, RED, DEDICATED 24 HOUR LP CIRCUIT
㉒ 138' 3P/4G QUAD, RED, DEDICATED 24 HOUR LP CIRCUIT
㉓ 138' 3P/4G QUAD, RED, DEDICATED 24 HOUR LP CIRCUIT
㉔ 138' 3P/4G QUAD, RED, DEDICATED 24 HOUR LP CIRCUIT
㉕ 138' 3P/4G QUAD, RED, DEDICATED 24 HOUR LP CIRCUIT
㉖ 138' 3P/4G QUAD, RED, DEDICATED 24 HOUR LP CIRCUIT
㉗ 138' 3P/4G QUAD, RED, DEDICATED 24 HOUR LP CIRCUIT
㉘ 138' 3P/4G QUAD, RED, DEDICATED 24 HOUR LP CIRCUIT
㉙ 138' 3P/4G QUAD, RED, DEDICATED 24 HOUR LP CIRCUIT
㉚ 138' 3P/4G QUAD, RED, DEDICATED 24 HOUR LP CIRCUIT
㉛ 138' 3P/4G QUAD, RED, DEDICATED 24 HOUR LP CIRCUIT
㉜ 138' 3P/4G QUAD, RED, DEDICATED 24 HOUR LP CIRCUIT
㉝ 138' 3P/4G QUAD, RED, DEDICATED 24 HOUR LP CIRCUIT
㉞ 138' 3P/4G QUAD, RED, DEDICATED 24 HOUR LP CIRCUIT
㉟ 138' 3P/4G QUAD, RED, DEDICATED 24 HOUR LP CIRCUIT
㊱ 138' 3P/4G QUAD, RED, DEDICATED 24 HOUR LP CIRCUIT
㊲ 138' 3P/4G QUAD, RED, DEDICATED 24 HOUR LP CIRCUIT
㊳ 138' 3P/4G QUAD, RED, DEDICATED 24 HOUR LP CIRCUIT
㊴ 138' 3P/4G QUAD, RED, DEDICATED 24 HOUR LP CIRCUIT
㊵ 138' 3P/4G QUAD, RED, DEDICATED 24 HOUR LP CIRCUIT
㊶ 138' 3P/4G QUAD, RED, DEDICATED 24 HOUR LP CIRCUIT
㊷ 138' 3P/4G QUAD, RED, DEDICATED 24 HOUR LP CIRCUIT
㊸ 138' 3P/4G QUAD, RED, DEDICATED 24 HOUR LP CIRCUIT
㊹ 138' 3P/4G QUAD, RED, DEDICATED 24 HOUR LP CIRCUIT
㊺ 138' 3P/4G QUAD, RED, DEDICATED 24 HOUR LP CIRCUIT
㊻ 138' 3P/4G QUAD, RED, DEDICATED 24 HOUR LP CIRCUIT
㊼ 138' 3P/4G QUAD, RED, DEDICATED 24 HOUR LP CIRCUIT
㊽ 138' 3P/4G QUAD, RED, DEDICATED 24 HOUR LP CIRCUIT
㊾ 138' 3P/4G QUAD, RED, DEDICATED 24 HOUR LP CIRCUIT
㊿ 138' 3P/4G QUAD, RED, DEDICATED 24 HOUR LP CIRCUIT



ANTHONY CASSATA ARCHITECT

3825 BUCKFIELD
SUITE 140
K BLDG 101 6052
DUBLIN, CA 94568
(916) 231-2445
(916) 231-6123

dd's DISCOUNTS

OWNER:

ROSS STORES

5130 HACIENDA DRIVE
DUBLIN, CA 94568

PROJECT:

dd's DISCOUNTS STORE #5352 (GREENVILLE, SC)

WHITE HORSE PLAZA
6115 WHITE HORSE ROAD
GREENVILLE, SC 29611

BASED ON DD'S
22X TURKEY - EXISTING
PROTOTYPE DATED MARCH, 2018

DRAWING TITLE:
OFFICE PLAN & DETAILS

REV. NO.: DATE: DESCRIPTION:
02/02/18 FOR ROSS REVIEW
03/02/18 ROSS MARK-UPS

EXPIRES: 6/30/2018

COPYRIGHT: ALL DRAWN AND WRITTEN INFO APPEARING HEREIN SHALL NOT BE DUPLICATED, DISCLOSED OR OTHERWISE WITHOUT WRITTEN CONSENT.

PDFA JOB: #16027
SCALE: AS NOTED
DRAWN BY: CHECKED BY:

SHEET NUMBER

E2.0