

ANTHONY CASSATA ARCHITECT 280 S. HATTERFIELD ROAD SUITE 340 CHICAGO, IL 60623 TEL: (312) 441-1245 FAX: (312) 795-6123

dd's DISCOUNTS

OWNER: ROSS STORES 5130 HACIENDA DRIVE DUBLIN, CA 94568

PROJECT: dd's DISCOUNTS STORE #5352 (GREENVILLE, SC) WHITE HORSE PLAZA 6119 WHITE HORSE ROAD GREENVILLE, SC 29611

DRAWING TITLE: ELECTRICAL ROOM PLAN & SCHEDULES REV. NO.: DATE: DESCRIPTION: 02/02/18 FOR ROSS REVIEW 03/12/18 FOR ROSS MARK-UPS

3/12/16 PROFESSIONAL SEAL AND SIGNATURE OF ANTHONY CASSATA ARCHITECT

COPYRIGHT: ALL DRAWN AND WRITTEN INFO. APPEARING HEREIN SHALL NOT BE DUPLICATED, DISCLOSED OR OTHERWISE REPRODUCED WITHOUT WRITTEN CONSENT. PFDA JOB: #16027 SCALE AS NOTED DRAWN BY: CHECKED BY: SHEET NUMBER E1.1

PANEL HA - TYPICAL table with columns for Description, WATTS, and Amps. Includes notes on lighting and equipment loads.

PANEL NOTES 1. ELECTRICAL CONTRACTOR TO RUN 0-10V TWISTED PAIR #18 PLENUM RATED FROM DIMMING MIDDLE (DOP) TO EACH DIMMING DRIVER... 2. ELECTRICAL CONTRACTOR TO RUN 0-10V TWISTED PAIR #18 PLENUM RATED FROM DIMMER SWITCH TO EACH DIMMING DRIVER...

ELECTRICAL ROOM - ALL ROSS ELECTRICAL PANELS AND SWITCH GEAR MUST BE LOCATED IN THE ELECTRICAL ROOM, SEE SHEET E1.2/2.1/2.2... ELECTRICAL ROOM - ALL ROSS ELECTRICAL PANELS AND SWITCH GEAR MUST BE LOCATED IN THE ELECTRICAL ROOM, SEE SHEET E1.2/2.1/2.2...

ELECTRICAL ROOM - ALL ROSS ELECTRICAL PANELS AND SWITCH GEAR MUST BE LOCATED IN THE ELECTRICAL ROOM, SEE SHEET E1.2/2.1/2.2... ELECTRICAL ROOM - ALL ROSS ELECTRICAL PANELS AND SWITCH GEAR MUST BE LOCATED IN THE ELECTRICAL ROOM, SEE SHEET E1.2/2.1/2.2...

E-RCP CODED NOTES 1. ELECTRICAL CONTRACTOR TO RUN 0-10V TWISTED PAIR #18 PLENUM RATED FROM DIMMING MIDDLE (DOP) TO EACH DIMMING DRIVER... 2. ELECTRICAL CONTRACTOR TO RUN 0-10V TWISTED PAIR #18 PLENUM RATED FROM DIMMER SWITCH TO EACH DIMMING DRIVER...

CIRCUIT FOR SALES FLOOR EXIT DOORS TO BE LOCKED. CIRCUITS ARE 24 HR UNLESS SPECIFICALLY NOTED AS OTHERWISE.

3 TYPICAL PANEL SCHEDULE N.T.S.

DD'S DISCOUNTS STANDARD LIGHTING/FULL SWITCH AND DIM CONTROL REQUIREMENTS ELECTRICAL CONTRACTOR MUST VERIFY IN FIELD CORRECT CIRCUITS ARE SWITCHED AS SHOWN AND INITIAL THE COLUMN LABELED 'ELECTRICAL CONTRACTOR COMPLIANCE' LOCATED AT THE FAR RIGHT OF THIS DOCUMENT.

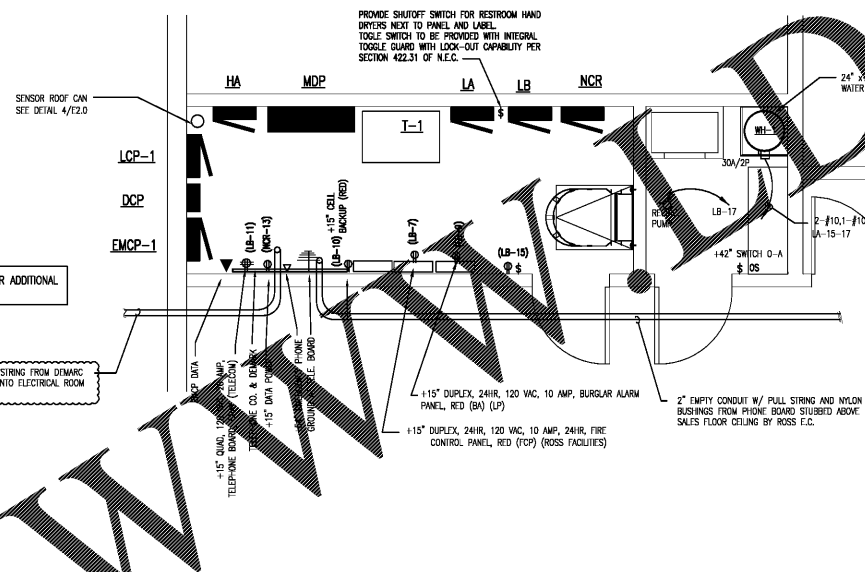
Table with columns for Lighting Load Description, EMS Digital Output, Wall, Notes, and Electrical Contractor Compliance. Lists various lighting and control loads.

- 1 - WALL MOUNTED OCCUPANCY SENSOR SWITCH (IF STORE HAS A SIGN WORK CANYON)
2 - ADDITIONAL EXTERIOR LIGHTS AGREED UPON BY ROSS ONLY; NOT CODE REQUIRED WALKWAY LIGHTING PROVIDED BY LANDLORD.
3 - TYPICALLY 3 CIRCUITS REQUIRED - VERIFY WITH SIGN CONSULTANT.
4 - TYPICALLY THIS LOAD WILL BE TURNED ON WHEN STORE IS OPENED BY EMPLOYEES.
5 - TYPICALLY THIS LOAD WILL BE TURNED ON WHEN STORE IS OPENED TO PUBLIC.
6 - INTERMEDIATE IN EQUIPMENT WILL CONTROL EXHAUST FAN AFTER OCCUPIED HOURS FOR LOCAL COOLING OF EQUIPMENT CLOSET (ALL HOURS).
7 - EXHAUST FAN SERVING LOCKER ROOM/EQUIPMENT CLOSET CONTROLLED VIA LOP BOT AND THERMOSTAT IN EQUIPMENT CLOSET.
8 - 1 PHOTOCELL WILL CONTROL 1 LEVEL OF CONTINUOUS DIMMING FOR DAY LIGHT HARVESTING.

8 EMS CONTROL REQUIREMENTS N.T.S.

E-RCP NOTES THIS PLAN IS PRESENTED AS A CONCEPTUAL ILLUSTRATION OF THE DESIGN REQUIREMENTS. ACTUAL DESIGN MUST USE ROSS SITE SPECIFIC TENDRY PLAN AS BENCHMARK. 2. STRICT ADHERENCE TO THE DESIGN CONCEPT AND INCORPORATION OF ALL ROSS CRITERIA AND SPECIFICATIONS IS MANDATORY.

ARCHITECTURAL REFLECTED CEILING PLAN LEGEND table with symbols for lighting fixtures, ceiling types, and other architectural details.



1 ELECTRICAL ROOM PLAN SCALE: 3/8"=1'-0" (IN FEET) 3/8"=1'-0"

EXIT SIGNS SEE RCP NOTE #14 SHEET A2.1. SEE RCP NOTE #14 SHEET A2.2.

Order Plans @ WWW.DDLine.com