

OWNER:

ROSS STORES
5130 HACIENDA DRIVE DUBLIN, CA 94568

PROJECT:

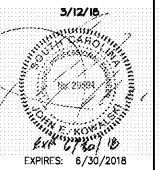
dd's DISCOUNTS STORE #5352 (GREENVILLE, SC)

WHITE HORSE PLAZA
6119 WHITE HORSE ROAD GREENVILLE, SC 29611

BASED ON DD'S 22K TURKEY - EXISTING PROTOTYPE DATED MARCH, 2018

DRAWING TITLE:
LIGHTING PLAN

REV. NO. | DATE | DESCRIPTION:
02/02/18 FOR ROSS REVIEW
03/12/18 ROSS MARK-UPS



COPYRIGHT: ALL DRAWN AND WRITTEN INFO. APPEARING HEREIN SHALL NOT BE DUPLICATED, DISCLOSED OR OTHERWISE REPRODUCED WITHOUT WRITTEN CONSENT.

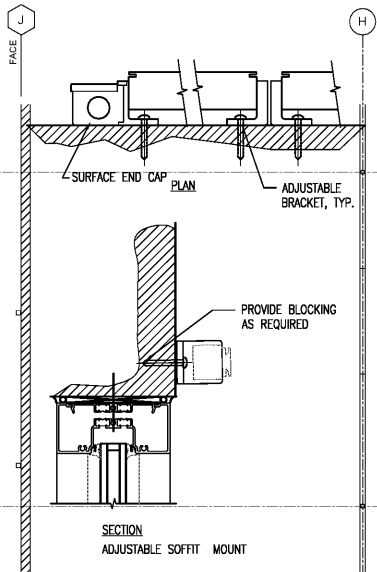
PFDA JOB: #16027

SCALE AS NOTED

DRAWN BY: CHECKED BY:

SHEET NUMBER

E1.0



3 WINONA LIGHTING MOUNTING DETAIL
SCALE: NTS

LIGHT FIXTURE & BRACKETS TO BE ORDERED THROUGH AMERICAN WHOLESALE LIGHTING (AWL), NO EXCEPTIONS. COORDINATE MOUNTING WITH ROSS PRIOR TO INSTALLATION.

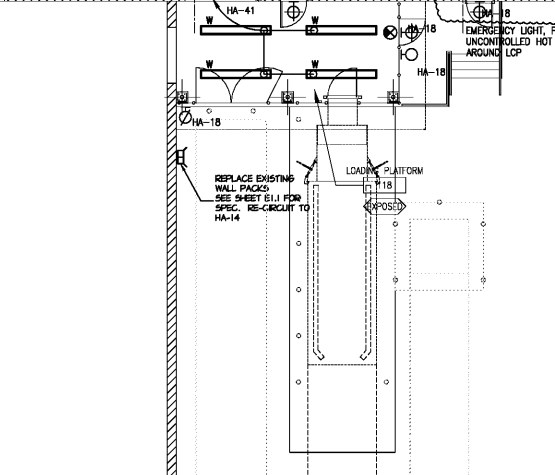
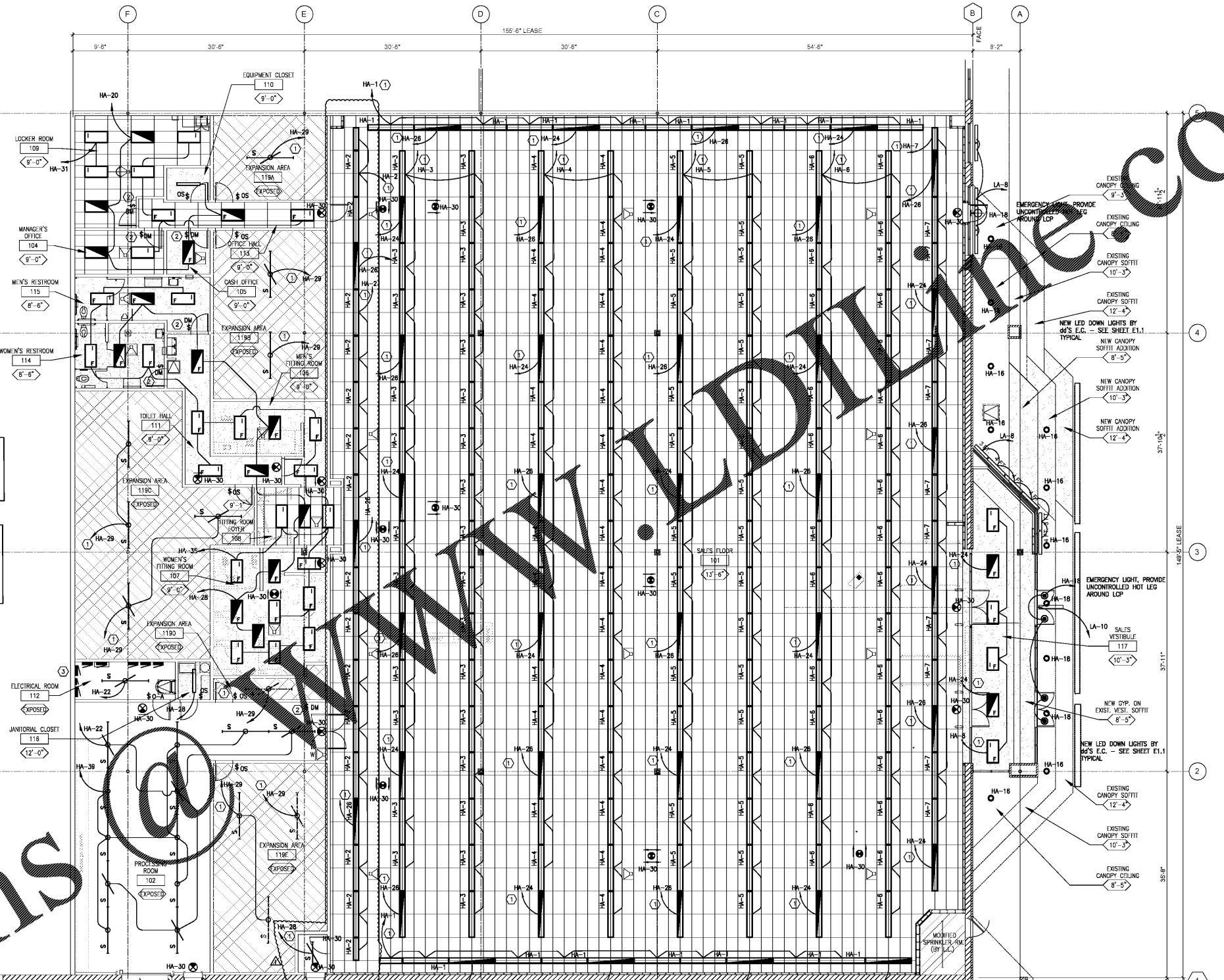
E-RCP CODED NOTES

- ELECTRICAL CONTRACTOR TO RUN 0-10V TWISTED PAIR #18 PLENUM RATED FROM DIMMING MODUL (DCP) TO EACH DIMMING DRIVER (224 FIXTURES DRIVER PART # 0100M - 100 DRIVERS MAX PER ZONE), STRIP FIXTURES DRIVER PART # 0100W - 250 DRIVERS MAX PER OUTPUT). SET THIS PRINTS FOR DIMMING ZONING.
- ELECTRICAL CONTRACTOR TO RUN 0-10V TWISTED PAIR #18 PLENUM RATED FROM DIMMER SWITCH TO EACH DIMMING DRIVER FOR THE SAME CIRCUIT. REFER TO MANUFACTURER'S WIRING DIAGRAMS.
- LOP MANUFACTURED BY GAG SHALL PROVIDE ALL CERTIFIED EQUIPMENT AND DOCUMENTATION.

NOTE: E.C. TO SET CASH OFFICE 105 DIMMER SWITCH TO A MIN. 25%

NOTE: SALES AREA & FUTURE EXPANSION AREAS
ELECTRICAL CONTRACTOR TO RUN 0-10V TWISTED PAIR #18 PLENUM RATED FROM DIMMING MODUL (DCP) TO EACH DIMMING DRIVER (224 FIXTURES DRIVER PART #0100M-100 DRIVERS MAX PER ZONE), (STRIP FIXTURES DRIVER PART #0100W-250 DRIVERS MAX PER ZONE). THIS INCLUDES ALL NORMAL FIXTURES AND ALL EMERGENCY FIXTURES IN SALES AREA. REFER TO EDP PLANS FOR DIMMING ZONING.

NOTE: OFFICE/RESTROOMS/PROCESSING LIGHTING
ELECTRICAL CONTRACTOR TO RUN 0-10V TWISTED PAIR #18 PLENUM RATED FROM DIMMER SWITCH TO EACH DIMMING DRIVER FOR THE SAME CIRCUIT. REFER TO MANUFACTURER'S WIRING DIAGRAMS FOR DIMMER SWITCHES IN MEN'S AND WOMEN'S RESTROOMS, LOCKER ROOM, MANAGER'S OFFICE, CASH OFFICE, & PROCESSING ROOMS. DIMMER SWITCH TO DIM NORMAL FIXTURES ONLY IN EACH ROOM WITH DIMMER SWITCH.



NOTE:
1. ALL LIGHTING CIRCUITING SHALL BE MINIMUM #10 WIRE WITH SEPARATE GROUNDS.
2. ALL WIRING FOR LIGHTING CIRCUITS CONTROLLED BY EMS NOT TO EXCEED #10 AWG PER ROSS ELECTRICAL CRITERIA.
3. ALL LIGHTING CIRCUITS SHALL HAVE SEPARATE NEUTRALS, NO SHARED NEUTRALS.
4. NO DEVICES SHALL BE MOUNTED ON WALLS WITH DRINKS OR SHELVING. (SEE ARCHITECTURAL INTERIOR ELEVATIONS).
5. E.C. SHALL COORDINATE ALL DEVICE LOCATIONS, DO NOT SPLIT DISSIMILAR MATERIALS. DEVICES ARE TO BE FULLY ABOVE OR BELOW A FINISH.

NOTE:
ALL ELECTRICAL WORK SHALL COMPLY WITH THE NATIONAL ELECTRICAL CODE 2011 EDITION AND ANY LOCAL AMENDMENTS

LIGHTING PLAN
SCALE 1/8" = 1'-0"

Order Plans