

OWNER:

ROSS STORES
5130 HACIENDA DRIVE
DUBLIN, CA 94568

PROJECT:

dd's DISCOUNTS
STORE #5352
(GREENVILLE, SC)

WHITE HORSE PLAZA
6119 WHITE HORSE ROAD
GREENVILLE, SC 29611

BASED ON DD'S 22K TURNKEY - EXISTING
PROTOTYPE DATED MARCH, 2018

DRAWING TITLE: MECHANICAL SCHEDULES DETAILS
REV. NO. | DATE | DESCRIPTION
02/02/18 | FOR ROSS REVIEW
03/02/18 | ROSS MARK-UPS

3/12/18
Professional Engineer Seal
ANTHONY CASSATA
LICENSE NO. 10000
EXPIRES: 6/30/2018

COPYRIGHT: ALL DRAWN AND WRITTEN INFO. APPEARING HEREIN SHALL NOT BE REPRODUCED, COPIED, OR OTHERWISE DISCLOSED WITHOUT WRITTEN CONSENT.

PFDA JOB: #16027

SCALE: AS NOTED

DRAWN BY: CHECKED BY:

SHEET NUMBER
M2.0

GAS FIRED PACKAGED ROOFTOP UNIT SCHEDULE-FURNISHED AND INSTALLED BY d's CONTRACTOR

TAG	LOCATION	GENERAL DATA				SUPPLY FAN DATA				CONDENSER COMPRESSOR DATA				CONDENSER FAN DATA				COOLING CAPACITY DATA				ELECTRICAL DATA				NOTES				
		MANUFACTURER	MODEL NUMBER	SEER/ EER	NOM. TON	CFM	ODR CFM	EXTERNAL SP (IN.)	TYPE	DRIVE	FAN RPM	MOTOR HP	QUANTITY	QUAN. TYPE	UNLOADING STEPS	QUANTITY	EST (T)	HP	INPUT (KW)	OUTPUT (KW)	STAGES	TOTAL (KW)	EST (DB T)	LAT (DB T)	MCA		MOCP	VOLT	PH	
UH-1	ROOF	LENKOX	LGH000H	17.1 SEER	5	865	2000	420	1	CENT	DIRECT	1112	1	1	SCROLL	1	1	95	1/3 EA	150	120	2	83.2	75	57	15	20	460	3	1,2,3,4,5,7,8,9,10,11
UH-1	ROOF	LENKOX	LGH74H	12.0	6	975	2000	480	1	CENT	BELT	862	2	1	SCROLL	1	1	95	1/3 EA	150	120	2	77	77	57	17	25	460	3	1,2,3,4,5,7,8,9,10,11
UH-1	ROOF	LENKOX	LGH020H	12.5	7.5	1235	2830	465	1	CENT	BELT	822	2	2	SCROLL	2	2	95	1/3 EA	160	144	2	83	78	57	20	25	460	3	1,2,3,4,5,7,8,9,10,11
UH-1	ROOF	LENKOX	LGH120H	12.0	10	1370	3420	800	1	CENT	BELT	940	3	2	SCROLL	2	2	95	1/3 EA	240	192	2	124	75	57	27	30	460	3	1,2,3,4,5,7,8,9,10,11
UH-1	ROOF	LENKOX	LGH150H	12.0	13	2215	5040	1000	1	CENT	BELT	945	3	3	SCROLL	3	3	95	1/3 EA	280	208	2	156	79	57	34	35	460	3	1,2,3,4,5,7,8,9,10,11
UH-1	ROOF	LENKOX	LGH120H	12.0	10	1370	3550	745	1	CENT	BELT	940	3	2	SCROLL	2	2	95	1/3 EA	240	192	2	124	75	57	27	30	460	3	1,2,3,4,5,7,8,9,10,11
UH-1	ROOF	LENKOX	LGH000H	10.9	25	3554	8500	1445	1	CENT	BELT	880	7.5	4	SCROLL	2	38	95	1/3 EA	360	288	2	315	75	57	88	70	460	3	1,2,3,4,5,7,8,9,10,11

NOTES:

- OTHER ACCEPTABLE MANUFACTURERS: NO SUBSTITUTIONS
- INCLUDE THE FOLLOWING OPTIONAL ACCESSORIES: DUAL DRAINWAY ECONOMIZER, MOTOR OPERATED 250 G.P.A. DAMPER, FACTORY INSTALLED DUAL 1.5W GFI RECEPTACLE WIRED BY E.C. LENKOX WILL PROVIDE TEMPERATURE SENSORS FOR THE AC-LIMITS.
- SMOKE DETECTORS SHALL BE INSTALLED IN THE SUPPLY AND RETURN AIR DUCT UPSTREAM OF ANY FILTERS.
- PROVIDE POWER DRAINAGE
- PROVIDE FACTORY INSTALLED INR CIRCUIT BREAKER.
- PROVIDE FACTORY INSTALLED DISCONNECT
- ALL UNITS SHALL COMPLY WITH ASHRAE 90.1, INTERNATIONAL MECHANICAL CODE AND INTERNATIONAL ENERGY CONSERVATION CODE.
- PROVIDE FACTORY INSTALLED "WACKET DRAINED PRODRY BOARD".
- MECHANICAL CONTRACTOR TO PROVIDE 1/2" INSULATED LINE NUMBERS WITH THE SPECIFIC A/C UNIT # TO BE POSTED ON EACH UNIT ON THE CONTROL PANEL DOOR AND SIDE WITH DISCONNECT IN A LOCATION VISIBLE FROM ROOF HATCH
- FACTORY FITTED BURGLAR BARS. REFER TO 6.8.3 OF IMC CODEBOOK FOR FACTORY INSTALLED OPTIONS.
- PROVIDE LENKOX 14" HIGH PREFAB ROOF CURB

GAS FIRED UNIT HEATER SCHEDULE

TAG	LOCATION	GENERAL DATA				HEATING DATA				ELECTRICAL DATA				NOTES
		MANUFACTURER	MODEL NUMBER	TYPE	CFM	FUEL IN/OUT	MBH INPUT	MBH OUTPUT	MOTOR HP	VOLT	FLA	PH		
UH-1	PROCESSING ROOM	LENKOX	LF24-200A	PROPPELLER FAN	2200	NAT. GAS	5"	195	125	1/8	120-1-00	2.1	1,2,3,4	

NOTES:

- POWER VENTED WITH SPARK IGNITION
- CONTROLLED BY EMS. REFER TO EMS PLANS.
- HORIZONTAL AND VERTICAL DISCHARGE DOWNERS
- PROPPELLER FAN AND FAN GUARD

ELECTRIC FAN FORCED CEILING CABINET HEATER SCHEDULE

TAG	LOCATION	GENERAL DATA				FAN DATA				HEATING COIL DATA				CABINET DATA				NOTES
		MANUFACTURER	MODEL NUMBER	TYPE	CFM	MOTOR HP	KW	PHASE	VOLT	AMPS	PLASTER MOUNTING	FRAME	LYING					
CH-1	VESTIBULE	Q-MARK	CJ-845	FAN FORCED HEATER	1000	1/8	16	3	480	20	45	20x10	1,2,3,4					

NOTES:

- BUILT IN DISCONNECT.
- MOUNT TOP OF THERMOSTAT FOR CH-1 AT 48" A.F.F. IN A LOCKING, VENTILATED CLEAR PLASTIC ENCLOSURE. COORDINATE EXACT LOCATION WITH ROSS O.A. OWNER AND ARCHITECT PRIOR TO ROUGH-IN. COORDINATE SECTION WITH ROSS O.A. ALL WIRING SHALL BE IN CONDUIT PER NEC. THERMOSTAT TO BE PROVIDED AND INSTALLED BY MECHANICAL CONTRACTOR, WIRED BY ELECTRICAL CONTRACTOR
- WITH CONTROL TRANSFORMER FOR 24 VOLT REMOTE THERMOSTAT
- RECESSED MOUNTING, NORTHERN WHITE

EXHAUST FAN SCHEDULE

EQUIPMENT TAG	LOCATION	AREA SERVING	MANUFACTURER	MODEL	TYPE	DRIVE	INLET SIZES	CFM	SP (IN.)	FAN RPM	BHP	MOTOR				CONTROLS	NOTES	
												HP(MAX)	RPM	PHASE	VOLT			
EF-1	ROOF	WOMEN TOILET 114 MEN TOILET 115 106 MENS FITTING RM. 107 WOMENS FITTING RM.	COOK	135C3B	DOWNBLAST CENTRIFUGAL	BELT	4.1	570	0.375	868	.064	.25	1725	1	120	①	1,2,3,4,6	
EF-2	ROOF	LOCKER ROOM 108 EQUIP ROOM 110	COOK	135C3B	DOWNBLAST CENTRIFUGAL	BELT	4.0	570	0.375	864	.063	.25	1725	1	120	①	1,2,3,4,5,6	
EF-3	ROOF	ELECTRICAL RM 112	COOK	120AC080B	DOWNBLAST CENTRIFUGAL	BELT	4.2	175	0.375	953	.056	.25	1725	11	120	②	1,2,3,4,5,6	
EF-4	SUSPENDED IN ROOM	JVN. CLOSET 116	COOK	00-148	CLG. LMT. CABINET	DIRECT	1.5	75	0.375	849	---	34	WATTS	---	1	120	④	1,2,3

NOTES:

- OTHER ACCEPTABLE MANUFACTURERS: NO SUBSTITUTIONS
- ACME, GREENHECK OR EQUIVALENT.
- GRANITE BACKDRIFT DAMPER.
- DISCONNECT SWITCH.
- 12" HIGH PREFAB CURB
- LINE VOLTAGE THERMOSTAT FOR EF-2 AND EF-3 PROVIDED AND INSTALLED BY MECHANICAL CONTRACTOR, WIRED BY ELECTRICAL CONTRACTOR, ALL WIRING IS TO BE IN CONDUIT
- ALL EXHAUST FAN DUCT DROPS THAT EXCEED 84 SQ. INCHES REQUIRE FACTORY FITTED BURGLAR BARS.

CONTROLS:

- CONTROLLED BY EMS.
- CONTROLLED VIA LINE VOLTAGE THERMOSTAT
- CONTROLLED BY EMS & LINE VOLTAGE THERMOSTAT
- ACTIVATED VIA "EMS" CONTROL

DIFFUSER, GRILLE AND REGISTER SCHEDULE

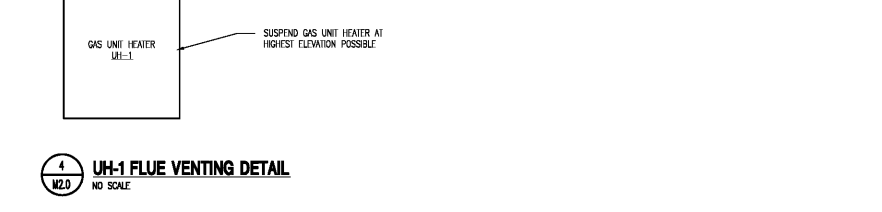
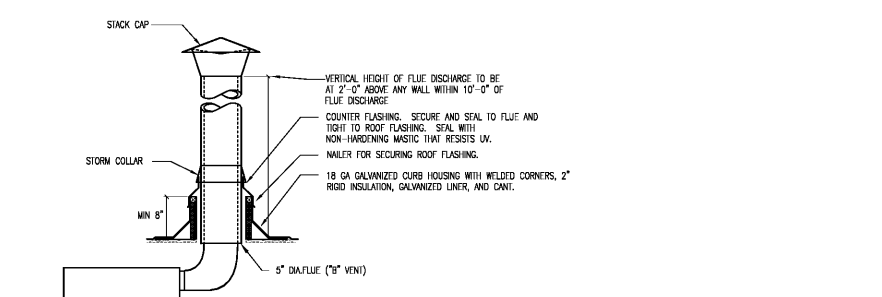
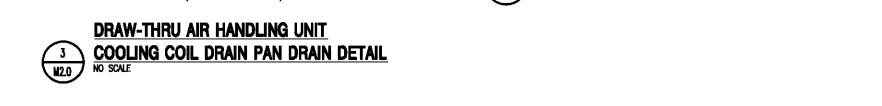
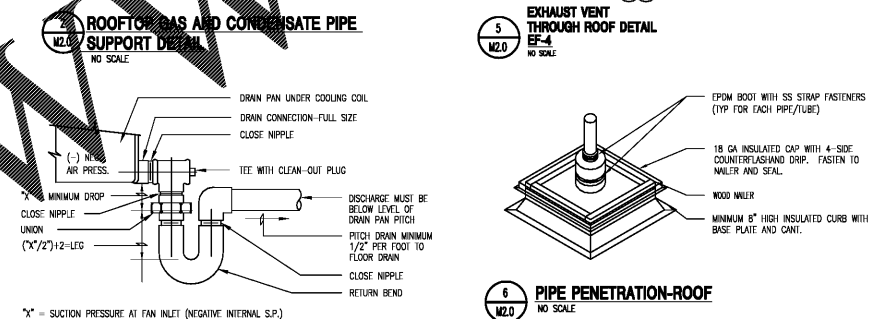
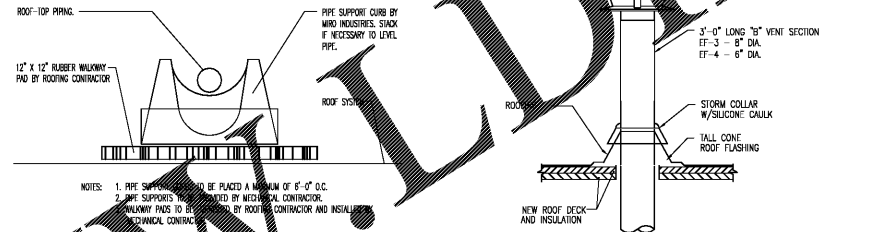
EQUIPMENT TAG	MANUFACTURER	MODEL	TYPE	NOMINAL FACE SIZE	MATERIAL	MAX. N.C.	NOTES
①	TITUS	PCS	SQUARE PANEL FACE	12"x12" 24"x24"	STEEL	30	1,2,3,4
②	TITUS	PR	EGG GRILLE	12"x12" 24"x24"	STEEL	30	1,2,3,4
③	TITUS	TRM	ADJUSTABLE ROUND DIFFUSERS	24"	STEEL	30	1,2,3,4,7
④	TITUS	30RL	30" DEFLECTION REGISTER	VARIABLES	STEEL	30	1,2,3,4
⑤	TITUS	272RS	DOUBLE DEFLECTION REGISTER	VARIABLES	STEEL	30	1,2,3,4
⑥	AQUATHERM	TF-HC	VAV DIFFUSER	24"x24"	STEEL	30	1,2,3,4
⑦	TITUS	T-300S	DOOR GRILLE	16"x16"	STEEL	30	1,2,5
⑧	TITUS	TD	SQUARE CEILING DIFFUSER	VARIABLES	STEEL	30	1,2,3,4,6

SCHEDULE NOTES:

- OTHER ACCEPTABLE MANUFACTURERS: NO SUBSTITUTIONS
- OFF-WHITE SHAVED CHANNEL FINISH
- COORDINATE FRAME TYPE WITH CEILING TYPE.
- PROVIDE BALANCING DAMPER AT DIFFUSERS
- SINK OF DOOR GRILLE TO BE AT 1'-4" A.F.F.
- MODEL AC-95 DAMPER
- DIFFUSERS TO BE AT SAME LEVEL AS LIGHT FIXTURES.

VENTILATION SCHEDULE BASED ON IMC 2015

ROOM NAME	OCCUPANCY CLASSIFICATION	FLOOR AREA (SQ.FT.)	NUMBER OF PEOPLE	REQUIRED VENTILATION (CFM/PERSON)	MIN. REQ. SUPPLY CFM	ACTUAL SUPPLY CFM	ACTUAL EXHAUST CFM	NOTES
PROCESSING ROOM 102	SHIPPING AND RECEIVING	1380	6	.12 CFM PER SQ.FT.	170	2000	170	AC-1
101 SALES AREA	SALES PARTIAL	1028	11	7.5 CFM PER PERSON .12 CFM PER SQ.FT.	208	850	250	AC-2
104 OFFICE WGR.	OFFICE	115	3	5 CFM PER PERSON .06 CFM PER SQ.FT.	25	300	25	AC-2
105 CASH OFFICE	OFFICE	56	1	5 CFM PER PERSON .06 CFM PER SQ.FT.	10	100	10	AC-2
108 LOCKER ROOM	DINING BREAK ROOM	340	6	7.5 CFM PER PERSON .12 CFM PER SQ.FT.	110	900	500	2-1F-2
110 EQUIP. CLOSET	STORAGE ROOM	41	---	.12 CFM PER SQ.FT.	5	---	70	AC-3
113 OFFICE HALL	CORRIDOR	145	---	.06 CFM PER SQ.FT.	150	10	10	AC-2
101 SALES AREA	SALES PARTIAL	1934	18	5 CFM PER PERSON .12 CFM PER SQ.FT.	395	840	395	AC-3
118E EXPANSION AREA	STORAGE ROOM	552	---	.12 CFM PER SQ.FT.	70	330	70	AC-3
120 EGRESS CORRIDOR	CORRIDOR	33	---	.06 CFM PER SQ.FT.	60	2	2	AC-3
101 SALES AREA	SALES PARTIAL	1002	10	7.5 CFM PER PERSON .12 CFM PER SQ.FT.	195	150	195	AC-4
108 MENS FITTING ROOM	DRESSING ROOM	---	---	.25 CFM PER SQ.FT.	55	250	70	AC-4,EF-1
107 WOMENS FITTING ROOM	DRESSING ROOM	415	---	.25 CFM PER SQ.FT.	105	600	120	AC-4,EF-1
108 FITTING Foyer	COFFEE BAR	---	---	.06 CFM PER SQ.FT.	10	250	10	AC-4
TOILET HALL	CORRIDOR	200	---	.06 CFM PER SQ.FT.	10	240	10	AC-4
110 WOMEN'S RESTROOM	TOILET ROOM PUBLIC	172	2 W.C.	70 CFM-E PER W.C.	140-E	150	200	AC-4,EF-1
110 MEN'S RESTROOM	TOILET ROOM PUBLIC	190	2 W.C.	70 CFM-E PER W.C.	140-E	150	200	AC-4,EF-1
119E EXPANSION AREA	STORAGE ROOM	1070	---	.12 CFM PER SQ.FT.	130	630	130	AC-4
118E EXPANSION AREA	STORAGE ROOM	82	---	.12 CFM PER SQ.FT.	10	100	10	AC-4
101 SALES AREA	SALES PARTIAL	5084	45	7.5 CFM PER PERSON .12 CFM PER SQ.FT.	948	5040	948	AC-5
101 SALES AREA	SALES PARTIAL	3240	30	7.5 CFM PER PERSON .12 CFM PER SQ.FT.	614	3000	614	AC-6
119A EXPANSION AREA	STORAGE ROOM	286	---	.12 CFM PER SQ.FT.	35	200	35	AC-6
118E EXPANSION AREA	STORAGE ROOM	570	---	.12 CFM PER SQ.FT.	70	350	70	AC-6
101 SALES AREA	SALES PARTIAL	3600	52	7.5 CFM PER PERSON .12 CFM PER SQ.FT.	650	6500	650	AC-7
117 SALES VESTIBULE	CORRIDOR	517	---	.06 CFM PER SQ.FT.	35	2000	35	AC-7
ELECTRICAL ROOM 112	UTILITY ROOM	112	---	.06 CFM PER SQ.FT.	10	---	175	EF-3
JANITORIAL CLOSET 116	TOILET ROOM	36	1 W.C.	70 CFM-E PER W.C.	70	---	75	EF-4



Order Plans