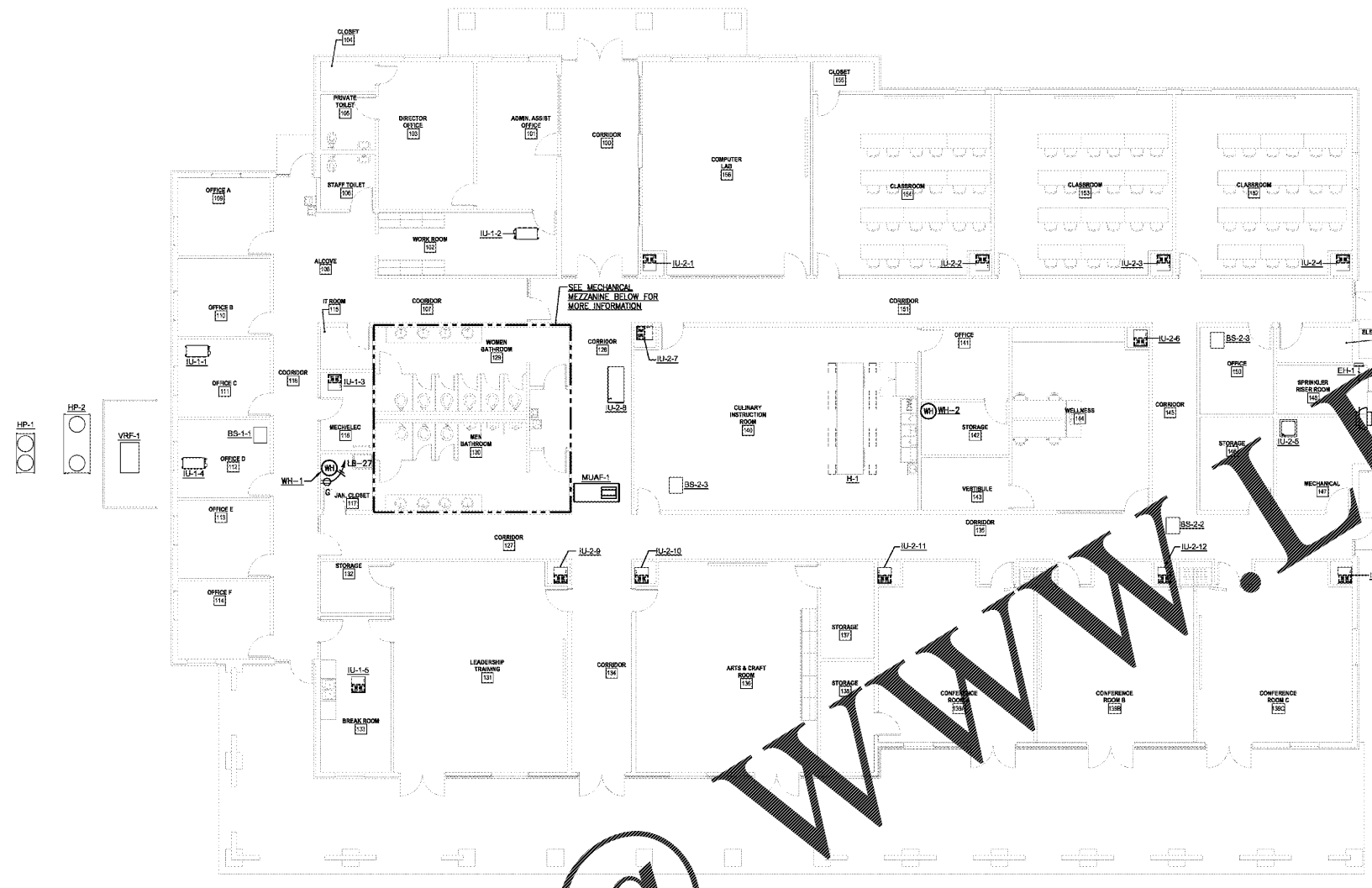
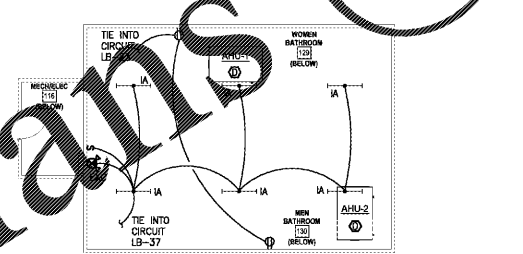


ALL DIMENSIONS UNLESS OTHERWISE SPECIFIED ARE IN FEET AND INCHES. DIMENSIONS SHALL BE TO FACE UNLESS OTHERWISE SPECIFIED. THE CONTRACTOR SHALL BE RESPONSIBLE FOR OBTAINING ALL NECESSARY PERMITS AND APPROVALS FROM THE LOCAL, STATE AND FEDERAL AUTHORITIES. THE CONTRACTOR SHALL BE RESPONSIBLE FOR OBTAINING ALL NECESSARY PERMITS AND APPROVALS FROM THE LOCAL, STATE AND FEDERAL AUTHORITIES. THE CONTRACTOR SHALL BE RESPONSIBLE FOR OBTAINING ALL NECESSARY PERMITS AND APPROVALS FROM THE LOCAL, STATE AND FEDERAL AUTHORITIES.

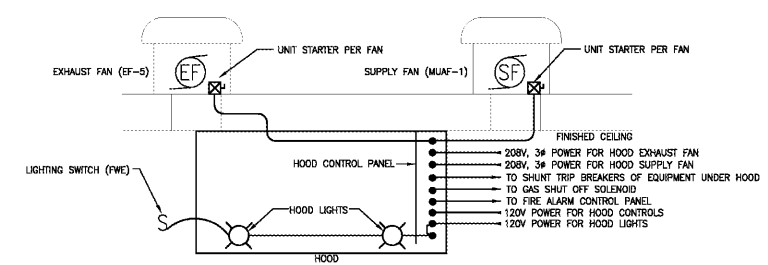


ELECTRICAL MECHANICAL PLAN
SCALE: 1/8"=1'-0"



MECHANICAL MEZZANINE POWER & LIGHTING PLAN
SCALE: 1/8"=1'-0"

POWER NOTES:
 1. VERIFY ALL LOCATIONS, ELECTRICAL CIRCUIT AND CONNECTION REQUIREMENTS FOR ALL HVAC AND PLUMBING EQUIPMENT WITH MECHANICAL CONTRACTOR PRIOR TO ROUGH-IN. SEE "MECHANICAL EQUIPMENT ELECTRICAL SCHEDULE" FOR CIRCUIT AND WIRING REQUIREMENTS FOR ALL HVAC EQUIPMENT.



- KITCHEN HOOD SCOPE:**
 THIS DETAIL IS PROVIDED AS AN AID TO THE CONTRACTOR. CONTRACTOR SHALL COORDINATE WITH HOOD SUPPLIERS' SPECIFICATIONS FOR EXACT REQUIREMENTS AND PROVIDE FOR COMPLETE AND OPERATIONAL SYSTEM.
- FIRE SUPPRESSION TO BE WIRED TO JUNCTION BOX FOR CONNECTION TO 120V AC CIRCUIT BY ELECTRICAL CONTRACTOR.
 - LIGHTING AND SWITCH TO BE WIRED TO JUNCTION BOX FOR CONNECTION TO 120V AC CIRCUIT BY ELECTRICAL CONTRACTOR.
 - CONTROLS FOR EXHAUST FAN AND SUPPLY FAN ARE PROVIDED BY EQUIPMENT VENDOR. ELECTRICAL CONTRACTOR TO SUPPLY ALL PRIMARY CONDUCTORS TO DISCONNECT, INTERCONNECT WIRING BETWEEN CONTROL PANELS AND EQUIPMENT. PROVIDE AC WIRING TO SHUNT TRIP POWER CIRCUIT BREAKER AT PANEL FOR SUPPLY FAN AND ALL ELECTRICAL CIRCUITS UNDER HOOD SYSTEM. COORDINATE EXACT REQUIREMENTS.
 - ELECTRICAL CONTRACTOR TO PROVIDE INTERLOCKING TO 120V GAS SOLENOID SWITCH.
 - ELECTRICAL CONTRACTOR TO PROVIDE FIRE ALARM CONTROL MODULE AND TIE TO SUPPRESSION CONTROL PANEL AS REQUIRED.
 - ALL ELECTRICAL EQUIPMENT UNDER KITCHEN HOOD WILL REQUIRE SHUNT TRIP BREAKERS.

KITCHEN HOOD DETAIL
SCALE: NONE

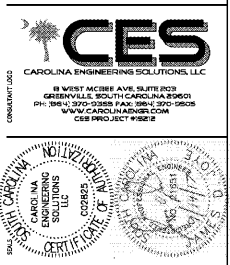
| EQUIP. | CIRCUIT # | FEED | DISCONNECT | NOTES |
|--------|--------------|---------|------------|---------|
| AHU-1 | MPB-1/3/5 | 1#100-1 | 60/3/F | 1,2 |
| AHU-2 | MPB-7/9/11 | 1#60-1 | 100/3/F | 1,2 |
| HP-1 | MPB-13/15/17 | 3#6-1 | 30/3/F/3R | 1,2 |
| HP-2 | MPB-19/21/23 | 3#6-1 | 60/3/F/3R | 1,2 |
| MUAF-1 | MPA-41/43/45 | 3#12-1 | 30/2/F | 1,2,3,4 |
| EF-1 | MPA-8/10 | 2#12-1 | 30/2/F | 1,2,3,4 |
| EF-5 | MPA-35/37/39 | 2#12-1 | 30/2/F/3R | 1,2,3,4 |
| BS-1-1 | MPB-14/18 | 2#12-1 | 30/2/F | 1,2,3,4 |
| BS-2-1 | MPB-14/18 | 2#12-1 | 30/2/F | 1,2,3,4 |
| BS-2-2 | MPB-14/18 | 2#12-1 | 30/2/F | 1,2 |
| BS-2-3 | MPB-14/18 | 2#12-1 | 30/2/F | 1,2 |
| BS-1 | MPB-20/20 | 2#12-1 | 30/2/F | 1,2 |
| BS-2 | MPB-18/20 | 2#12-1 | 30/2/F | 1,2 |
| BS-4 | MPB-22/24 | 2#12-1 | 30/2/F | 1,2 |
| BS-5 | MPB-26/28 | 2#12-1 | 30/2/F | 1,2 |
| BS-1 | MPB-18/20 | 2#12-1 | 30/2/F | 1,2 |
| BS-2 | MPA-16/18 | 2#12-1 | 30/2/F | 1,2 |
| BS-3 | MPA-16/18 | 2#12-1 | 30/2/F | 1,2 |
| BS-4 | MPA-16/18 | 2#12-1 | 30/2/F | 1,2 |
| BS-5 | MPA-16/18 | 2#12-1 | 30/2/F | 1,2 |
| BS-6 | MPA-16/18 | 2#12-1 | 30/2/F | 1,2 |
| BS-7 | MPB-22/24 | 2#12-1 | 30/2/F | 1,2 |
| BS-8 | MPB-22/24 | 2#12-1 | 30/2/F | 1,2 |
| BS-9 | MPB-26/28 | 2#12-1 | 30/2/F | 1,2 |
| BS-10 | MPB-26/28 | 2#12-1 | 30/2/F | 1,2 |
| BS-11 | MPA-20/22 | 2#12-1 | 30/2/F | 1,2 |
| BS-12 | MPA-20/22 | 2#12-1 | 30/2/F | 1,2 |
| BS-13 | MPA-20/22 | 2#12-1 | 30/2/F | 1,2 |
| VRF-1 | MPB-8/10/12 | 3#4-1 | 100/3/F/3R | 1,2 |
| VRF-2A | MPA-1/3/5 | 3#4-1 | 100/3/F/3R | 1,2 |
| VRF-2B | MPA-2/4/6 | 3#4-1 | 100/3/F/3R | 1,2 |
| WH-1 | MPB-33/35 | 2#10-1 | 30/2/NF | 1,2 |
| WH-2 | MPA-17/19 | 2#10-1 | 30/2/NF | 1,2 |

- NOTES:**
- CONTRACTOR TO COORDINATE WITH MECHANICAL DRAWINGS FOR EXACT LOCATION OF ALL MECHANICAL EQUIPMENT. LOCATION OF MECHANICAL EQUIPMENT SHOWN ARE FOR GENERAL INFORMATION PURPOSES ONLY.
 - INSTALL DISCONNECTING MEANS ADJACENT AND ACCESSIBLE TO ALL MECHANICAL EQUIPMENT. FIELD COORDINATE EXACT MOUNTING LOCATION.
 - SEE KITCHEN HOOD DETAIL ON THIS SHEET FOR ADDITIONAL INFORMATION.
 - FURNISH AND INSTALL SIZE 1 STARTER FOR FAN. VERIFY EXACT REQUIREMENTS WITH HOOD SUPPLIER.

Order Plans

WWW.LDPE.COM

mc milan | pr zdan | smith
 architects
 atlanta charlotte greenville hartsville
 90 box 1972 greenville, sc 29605
 (864) 242 2034
 www.landscape.com



SC STATE UNIVERSITY
CAMP HARRY G. DANIELS 1890 EXTENSION
FACILITY CONSTRUCTION
 Agency Review ID: H24-9649-CA
 116 Camp Daniels Road, Ellenton, SC

SHEET ISSUE:
 NO. DATE DESCRIPTION BY

BID SET 9/15/2017

SHEET TITLE:
ELECTRICAL MECHANICAL PLAN AND NOTES

SHEET NO. 13140.00
 PROJ. NO.

E1.13