

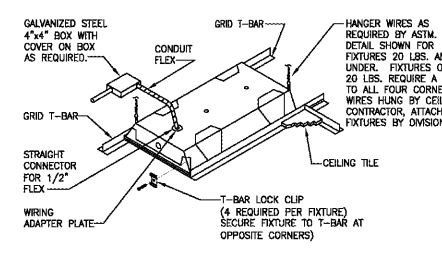
LIGHTING CONTROLLER NOTES

- INTERIOR LIGHTING CONTROLLER IS TO BE NEMA 1 ENCLOSURE, SIZED AS REQUIRED. PROVIDE ENGRAVED NAMEPLATE ON DOOR.
- H-O-A SWITCH IS TO BE ALLEN BRADLEY CAT. NO. 800H-RH3A, OIL TIGHT TYPE OR APPROVED EQUAL. MOUNT SWITCH ON DOOR AND PROVIDE NAMEPLATE ENGRAVED AS SHOWN.
- CONTACTOR IS TO BE SQUARE D CLASS 8903 TYPE L ELECTRICALLY HELD LIGHTING CONTACTOR OR APPROVED EQUAL. CONTACTS ARE TO BE 30A CONTINUOUS (200% QTY) AS SHOWN.
- TIMECLOCK IS TO BE TORK #120V, SPST OR APPROVED EQUAL. COORDINATE WITH NUMBER FOR MOUNTING POSITION.
- EMERGENCY AND EXTERIOR LIGHTS W/LED FROM INTERIOR LIGHTING CONTROLLER TO BE PROVIDED BY CONTRACTOR. PROVIDE EQUAL BYPASS TO THE CONTRACTOR.
- PROVIDE APPROXIMATE NUMBER OF POLES FOR LIGHTING PLUS (4) SPARE.

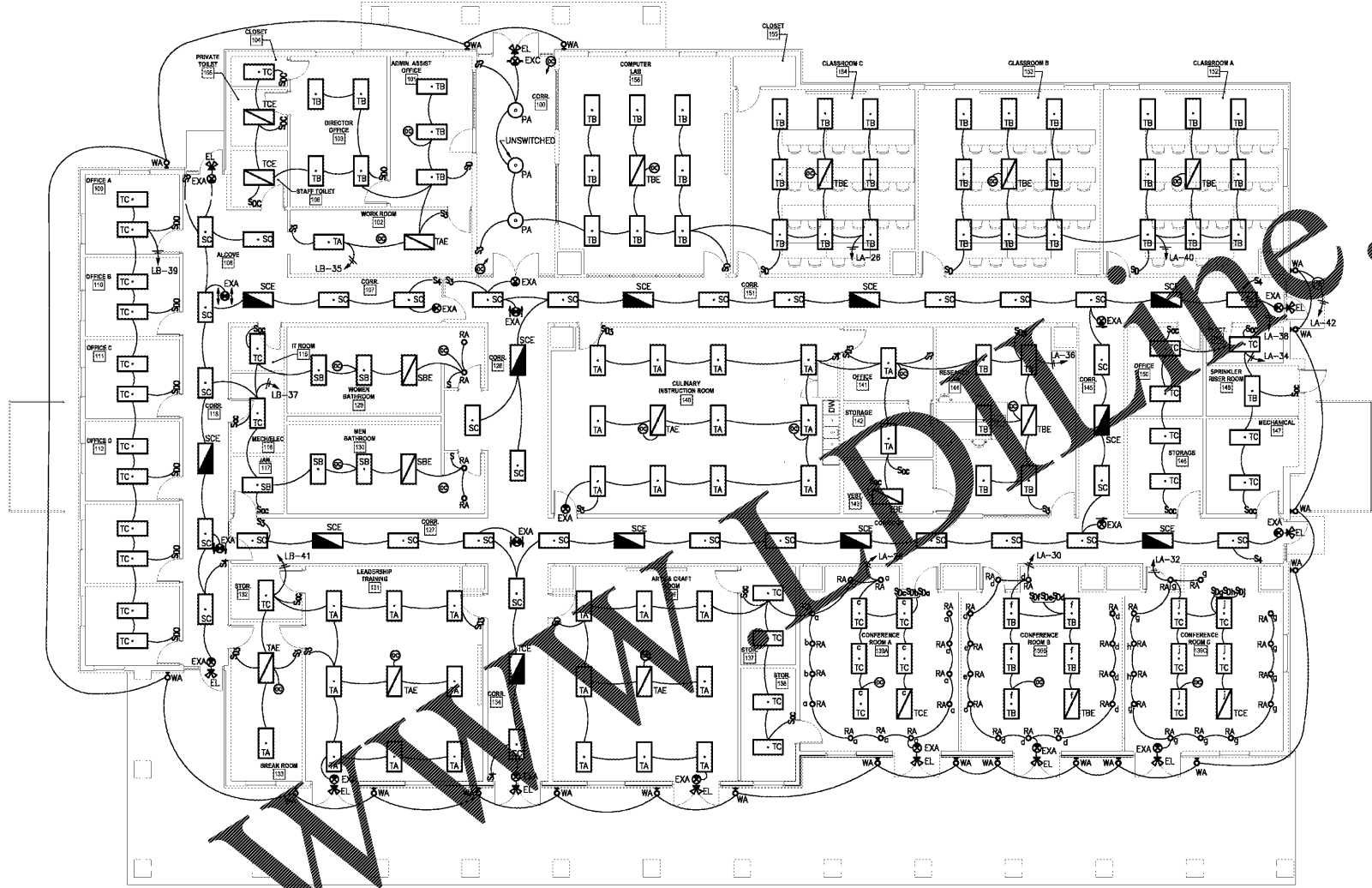
INTERIOR LIGHTING CONTROLLER 'ILC'

LIGHTING NOTES:

- FOR DRAWING CLARITY, INDIVIDUAL BRANCH CIRCUIT HOMERUNS ARE INDICATED. ELECTRICAL CONTRACTOR MAY RUN UP TO (4) 20A BRANCH CIRCUITS BY A SINGLE HOMERUN TO A COMMON PANEL.
- PULL AN UNSWITCHED LEG OF THE LOCAL LIGHTING CIRCUIT TO ALL EXIT, EMERGENCY AND NIGHT LIGHTING FIXTURES SHOWN UNLESS INDICATED OTHERWISE ON PLANS.
- DETERMINE EXACT LOCATION FOR ALL LIGHT FIXTURES IN FIELD. COORDINATE WITH CEILING GRID LAYOUT WHERE APPLICABLE AND WITH OTHER TRADES.
- LIGHTING CIRCUITS SHALL BE ROUTED THROUGH INTERIOR LIGHTING CONTROLLER 'ILC', UNLESS NOTED OTHERWISE.



TYPICAL GRID MOUNTED FIXTURE
SCALE: NONE

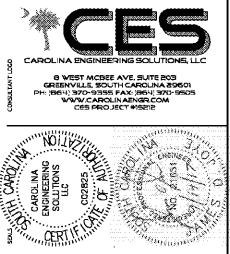


LIGHTING PLAN
SCALE: 1/8"=1'-0"

GENERAL LIGHTING NOTES:

- MANUFACTURERS & NUMBERS ARE LISTED TO ESTABLISH QUALITY ONLY AND NOT TO LIMIT COMPETITION. TEN DAYS PRIOR TO BIDDING, SUBSTITUTIONS ARE ALLOWED SUBJECT TO SUBMITTAL DATA, PHOTOMETRICS & ENGINEERS APPROVAL AS REQUIRED BY SPECIFICATIONS.
- ALL FIXTURES TO BE U.L. LISTED. ALL EXTERIOR FIXTURES SHALL HAVE U.L. WET LABEL OR DAMP LABEL AS REQUIRED BY LOCATION. CONTRACTOR SHALL VERIFY BEFORE INSTALLING FIXTURE.
- CONTRACTOR SHALL PROVIDE ALL MOUNTING ACCESSORIES, BAR HANGERS & HARDWARE REQUIRED FOR A COMPLETE SYSTEM.
- CONTRACTOR TO COORDINATE AND DETERMINE EXACT MOUNTING HEIGHTS OF ALL INTERIOR AND EXTERIOR WALL MOUNTED LIGHT FIXTURES IN FIELD PRIOR TO ROUGH-IN. FIXTURES TO BE UNIFORM AND CONSISTENT IN ALL APPLICATIONS.
- EMERGENCY BATTERY DRIVER WHEN INDICATED IN FIXTURES, SHALL PROVIDE A MINIMUM OF 1300 LUMEN OUTPUT. DRIVER SHALL CONTAIN INTERNAL SENSING CIRCUIT TO ALLOW FIXTURE TO BE SWITCHED WITH AREA FIXTURES FOR NORMAL OPERATION WHERE INDICATED, AND ENERGIZE (2) BATTERY POWERED LAMPS, EQUALLY UPON LOSS OF POWER CIRCUIT, REGARDLESS OF SWITCH POSITION.

LIGHTING FIXTURE SCHEDULE					
FIXTURE TYPE	FIXTURE DESCRIPTION	ACCEPTABLE MANUFACTURERS	LAMPS	FIXTURE WATTAGE	VOLTAGE
EL	EXTERIOR WEATHERPROOF LED EMERGENCY LIGHT, DARK BRONZE FINISH.	LIGHT ALARMS #QW-AC-DB EMERGLITE #LX-ACSD	LED	10	6
EXA	UNIVERSAL MOUNTED EXIT SIGN WITH RED LED ON WHITE HOUSING, BATTERY BACKUP, DIFFUSER LENS, SPEC. GRADE.	LIGHT ALARMS #1/2XDA-W-RW EMERGLITE #WW-P-1/2-R	BY MANUFACTURER	10	120
EXC	COMBINATION EMERGENCY LIGHT/EXIT SIGN WITH RED LED ON WHITE HOUSING, BATTERY BACKUP, DIFFUSER LENS, AND HIGH OUTPUT BATTERY BALLAST, SPEC. GRADE.	BEG2HELLI #BRZ-LR-1-W	BY MANUFACTURER	10	120
IA	LENSED LED STRIPLIGHT WITH WIRE GUARD, SPEC. GRADE.	COLUMBIA #LC4-35ML-EU-PAF-LD1WG4 OR EQUAL	MEDIUM LUMEN PACKAGE	48	120
TA	RECESSED 2X4 HIGH LUMEN LED TROFFER FOR GRID CEILING, 3500K COLOR TEMPERATURE. PROVIDE WITH 0-10V DIMMING DRIVER.	COLUMBIA #LCAT24-35HLG-EDU JUNO LIGHTING #S2X4BL-3535U-WH3	HIGH LUMEN PACKAGE	80	120
TAE	SAME AS TYPE "TA" ABOVE EXCEPT WITH EMERGENCY BATTERY DRIVER.	COLUMBIA #LCAT24-35HLG-EDU-EM JUNO LIGHTING #S2X4BL-3535U-WH3-EM	HIGH LUMEN PACKAGE	80	120
TB	RECESSED 2X4 MEDIUM LUMEN LED TROFFER FOR GRID CEILING, 3500K COLOR TEMPERATURE. PROVIDE WITH 0-10V DIMMING DRIVER.	COLUMBIA #LCAT24-35MLG-EDU JUNO LIGHTING #S2X4BL-3535U-WH3	MEDIUM LUMEN PACKAGE	47	120
TBE	SAME AS TYPE "TB" ABOVE EXCEPT WITH EMERGENCY BATTERY DRIVER.	COLUMBIA #LCAT24-35MLG-EDU-EM JUNO LIGHTING #S2X4BL-3535U-WH3-EM	MEDIUM LUMEN PACKAGE	47	120
TC	RECESSED 2X4 LOW LUMEN LED TROFFER FOR GRID CEILING, 3500K COLOR TEMPERATURE. PROVIDE WITH 0-10V DIMMING DRIVER.	COLUMBIA #LCAT24-35LWG-EDU JUNO LIGHTING #S2X4BL-3535U-WH3	LOW LUMEN PACKAGE	40	120
TCE	SAME AS TYPE "TC" ABOVE EXCEPT WITH EMERGENCY BATTERY DRIVER.	COLUMBIA #LCAT24-35LWG-EDU-EM JUNO LIGHTING #S2X4BL-3535U-WH3-EM	LOW LUMEN PACKAGE	40	120
PA	16" DIAMETER PENDANT MOUNTED FIXTURE WITH ALUMINUM REFLECTOR, BRONZE FINISH WITH TROSTED GLASS. PROVIDE WITH 0-10V DIMMING DRIVER.	BASELITE #EUB18-FINISH-33WLED BRONZE-(B/W)LC	LED	33	120
RA	6" RECESSED CAN LIGHT FIXTURE, WHITE TRIM RING, INSULATED HOUSING. PROVIDE WITH 0-10V DIMMING DRIVER.	PRESCOLITE #L0BLD120-8LLED6360B	LED	22	120
SB	SURFACE 2x4 MEDIUM LUMEN LED TROFFER FOR GRID CEILING, 3500K COLOR TEMPERATURE. PROVIDE WITH 0-10V DIMMING DRIVER.	COLUMBIA #LCAT24-35MLG-EDU-SURFACE MOUNT	MEDIUM LUMEN PACKAGE	47	120
SBE	SAME AS TYPE "SB" ABOVE EXCEPT WITH EMERGENCY BATTERY DRIVER.	COLUMBIA #LCAT24-35MLG-EDU-SURFACE MOUNT-EM	MEDIUM LUMEN PACKAGE	47	120
SC	SURFACE 2x4 LOW LUMEN LED TROFFER FOR GRID CEILING, 3500K COLOR TEMPERATURE. PROVIDE WITH 0-10V DIMMING DRIVER.	COLUMBIA #LCAT24-35LWG-EDU-SURFACE MOUNT	LOW LUMEN PACKAGE	40	120
SCE	SAME AS TYPE "SC" ABOVE EXCEPT WITH EMERGENCY BATTERY DRIVER.	COLUMBIA #LCAT24-35LWG-EDU-SURFACE MOUNT-EM	LOW LUMEN PACKAGE	40	120
WA	12" DIAMETER WALL MOUNTED FIXTURE WITH ALUMINUM REFLECTOR, WITH BRONZE COPPER FINISH.	BASELITE #EDR12/FINISH/811/2"WLED BRONZE COPPER	LED	33	120



SC STATE UNIVERSITY
CAMP HARRY G. DANIELS 1890 EXTENSION
 FACILITY CONSTRUCTION
 Agency Review ID: H24-9649-CA

SHEET ISSUE:
 NO. DATE DESCRIPTION BY

BID SET 9/15/2017

SHEET TITLE:
LIGHTING PLAN, SCHEDULE, DETAILS AND NOTES

SHEET NO. PROJ. NO.
 13140.00

E1.11

mc milan | prada | smith
 architects
 atlanta charlotte greenville
 405 WEST HICKORY AVE. SUITE 200
 GREENVILLE, SOUTH CAROLINA 29601
 PH: 864.233.1000 FAX: 864.233.1001
 WWW.MCMILANPRADASMITH.COM
 CES REG. NO. 10000
 (864) 242 2034
 www.mcmilanprada.com