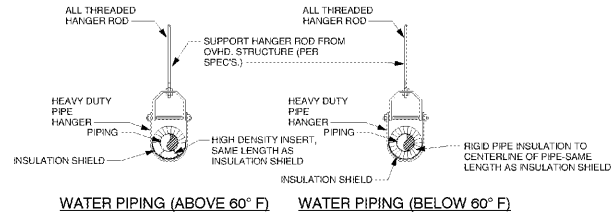
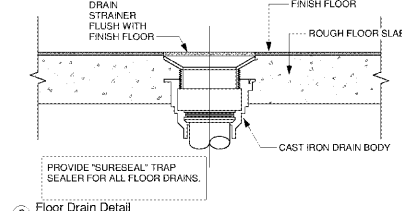


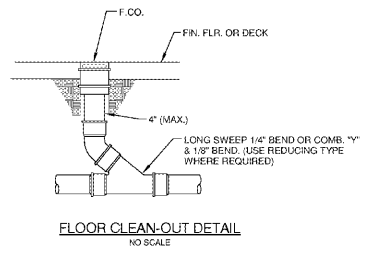
1 Electric Water Heater  
N.T.S.



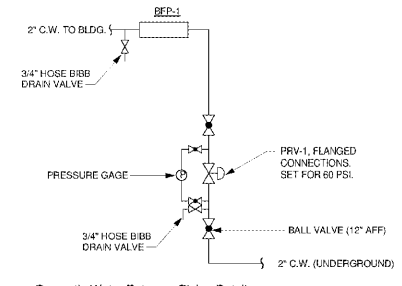
2 Pipe Hanger Detail  
N.T.S.



3 Floor Drain Detail  
N.T.S.



4 Floor Cleanout  
N.T.S.



5 Domestic Water Entrance Piping Detail  
N.T.S.

PLUMBING FIXTURE SCHEDULE

| ITEM  | DESCRIPTION   | FIXTURE                                     | WASTE     | VENT | HOT SUPPLY | COLD SUPPLY |
|-------|---|---|-----------|------|------------|-------------|
| WC-1  | AMERICAN STANDARD AFWALL 3551 101, 16-1/2" RIM HEIGHT, ELONGATED, VITREOUS CHINA, WHITE, SIPHON JET, 1.28 GAL. FLUSH W/SLAN G2 OPTIMA PLUS 8111 BATTERY OPERATED AUTOMATIC FLUSH VALVE. W/86MS 1855SS OPEN FRONT SEAT. PROVIDE WITH JR SMITH 2011 DOUBLE FIXTURE CARRIER FOR BACK TO BACK WATER CLOSETS. PROVIDE WITH JR SMITH 2009 FIXTURE CARRIER WHEN BACK TO BACK WITH A URINAL.        | WALL MOUNTED WATER CLOSET                   | 4         | 2    | -          | 1           |
| WC-1A | AMERICAN STANDARD AFWALL 3551 101, 16-1/2" RIM HEIGHT, ELONGATED, VITREOUS CHINA, WHITE, SIPHON JET, 1.28 GAL. FLUSH W/SLAN G2 OPTIMA PLUS 8111 BATTERY OPERATED AUTOMATIC FLUSH VALVE. W/86MS 1855SS OPEN FRONT SEAT. PROVIDE WITH JR SMITH 2011 DOUBLE FIXTURE CARRIER FOR BACK TO BACK WATER CLOSETS. PROVIDE WITH JR SMITH 2009 FIXTURE CARRIER WHEN BACK TO BACK WITH A URINAL.        | ADA WALL MOUNTED WATER CLOSET               | 4         | 2    | -          | 1           |
| WC-2  | AMERICAN STANDARD MADIRA 5461 201, 16-1/2" RIM HEIGHT, ELONGATED, VITREOUS CHINA, WHITE, SIPHON JET, 1.28 GAL. FLUSH W/SLAN G2 OPTIMA PLUS 8111 BATTERY OPERATED AUTOMATIC FLUSH VALVE. W/86MS 1855SS OPEN FRONT SEAT. PROVIDE WITH JR SMITH 2011 DOUBLE FIXTURE CARRIER FOR BACK TO BACK WATER CLOSETS. PROVIDE WITH JR SMITH 2009 FIXTURE CARRIER WHEN BACK TO BACK WITH A URINAL.        | ADA FLOOR MOUNTED WATER CLOSET              | 4         | 2    | -          | 1           |
| LAV-1 | AMERICAN STANDARD OVAL VLN UNDER COUNTER MOUNTED OVAL COUNTER TOP LAVATORY, VITREOUS CHINA, FAUCET HOLES ON 4" CENTERS. PROVIDE SLOAN OPTIMA PLUS 8111 BATTERY OPERATED AUTOMATIC FLUSH VALVE. W/86MS 1855SS OPEN FRONT SEAT. PROVIDE WITH JR SMITH 2011 DOUBLE FIXTURE CARRIER FOR BACK TO BACK WATER CLOSETS. PROVIDE WITH JR SMITH 2009 FIXTURE CARRIER WHEN BACK TO BACK WITH A URINAL. | COUNTER LAVATORY (HANDICAP ACCESSIBLE)      | 2         | 2    | -          | -           |
| LAV-2 | AMERICAN STANDARD LUCERNE WALL MOUNTED LAVATORY, VITREOUS CHINA, FAUCET HOLES ON 4" CENTERS. PROVIDE SLOAN OPTIMA PLUS 8111 BATTERY OPERATED AUTOMATIC FLUSH VALVE. W/86MS 1855SS OPEN FRONT SEAT. PROVIDE WITH JR SMITH 2011 DOUBLE FIXTURE CARRIER FOR BACK TO BACK WATER CLOSETS. PROVIDE WITH JR SMITH 2009 FIXTURE CARRIER WHEN BACK TO BACK WITH A URINAL.                            | WALL MOUNTED LAVATORY (HANDICAP ACCESSIBLE) | 2         | 2    | 1/2        | 1/2         |
| UR-1  | AMERICAN STANDARD WASH-BROOK VITREOUS CHINA, 3-1/4" TOP SP. (EQU. TO 3-1/2") PROVIDE W/ SLOAN G2 OPTIMA PLUS 8111 BATTERY OPERATED AUTOMATIC FLUSH VALVE. W/86MS 1855SS OPEN FRONT SEAT. PROVIDE WITH JR SMITH 2011 DOUBLE FIXTURE CARRIER. INSTALL AT ADA HEIGHT.  | WALL HUNG URINAL                            | 2         | 2    | -          | 2/4         |
| UR-1A | AMERICAN STANDARD WASH-BROOK VITREOUS CHINA, 3-1/4" TOP SP. (EQU. TO 3-1/2") PROVIDE W/ SLOAN G2 OPTIMA PLUS 8111 BATTERY OPERATED AUTOMATIC FLUSH VALVE. W/86MS 1855SS OPEN FRONT SEAT. PROVIDE WITH JR SMITH 2011 DOUBLE FIXTURE CARRIER. INSTALL AT ADA HEIGHT.  | WALL HUNG URINAL                            | 2         | 2    | -          | 2/4         |
| SK-1  | ELKAY 14-8C18X24-24, THREE COMPARTMENT COMMERCIAL SINK, 18 GA. STAINLESS STEEL, 14" DEEP BOWLS WITH SPRINGS, 4 HOLES, NSF APPROVED, 9" SQUARE, 5/8" LEFT AND RIGHT 3/4" DRINKING WATER FAUCETS WITH SWIVEL SPOUTS. PROVIDE WITH 1.5 GPM AERATOR.  | THREE COMPARTMENT SINK                      | 2         | 2    | 1/2        | 1/2         |
| SK-2  | ELKAY 14-8C18X24-24, THREE COMPARTMENT STAINLESS STEEL SINK, 8" BOWL DEPTH, 304 STAINLESS STEEL, 18 GA. PROVIDE WITH SINK STRAINER, 1/2" AOD SINGLE LEVER FAUCET WITH SPRAY. PROVIDE WITH 1.5 GPM AERATOR. PROVIDE CHROME PLATED ANGLE WALL VALVES.   | SINGLE COMPARTMENT SINK                     | 2         | 2    | 1/2        | 1/2         |
| HS-1  | ELKAY 14-8C18X24-24, THREE COMPARTMENT STAINLESS STEEL SINK, 8" BOWL DEPTH, 304 STAINLESS STEEL, 18 GA. PROVIDE WITH SINK STRAINER, 1/2" AOD SINGLE LEVER FAUCET WITH SPRAY. PROVIDE WITH 1.5 GPM AERATOR. PROVIDE CHROME PLATED ANGLE WALL VALVES.   | HAND WASH SINK                              | 2         | 2    | 1/2        | 1/2         |
| DF-1  | ELKAY 14-8C18X24-24, THREE COMPARTMENT STAINLESS STEEL SINK, 8" BOWL DEPTH, 304 STAINLESS STEEL, 18 GA. PROVIDE WITH SINK STRAINER, 1/2" AOD SINGLE LEVER FAUCET WITH SPRAY. PROVIDE WITH 1.5 GPM AERATOR. PROVIDE CHROME PLATED ANGLE WALL VALVES.   | ELECTRIC WATER COOLER (HANDICAP ACCESSIBLE) | 2         | 2    | -          | 1/2         |
| JS-1  | FLOOR MOP SINK - ZURN MODEL 91, 36"x24"x18", TERRAZZO MOP RECEPTOR, WITH DROP FRONT, STAINLESS STEEL CAST IRON FRONT, INTEGRAL CAST BRASS 3" DRAIN. PROVIDE MR-370 HOSE CLAMP, MR-371 FAUCET, AND MR-372 MOP HANGER.  | MOP SINK                                    | 3         | 2    | 1/2        | 1/2         |
| WH-1  | 30 GALLON COMMERCIAL ELECTRIC WATER HEATER (STATE, RHEEM, BRADFORD WHITE, AO SMITH), 4.5 KW, 208 VOLTS, 1-PHASE.  | ELECTRIC WATER HEATER                       | -         | -    | 3/4        | 3/4         |
| WH-2  | 30 GALLON COMMERCIAL ELECTRIC WATER HEATER (STATE, RHEEM, BRADFORD WHITE, AO SMITH), 4.5 KW, 208 VOLTS, 1-PHASE.  | ELECTRIC WATER HEATER                       | -         | -    | 3/4        | 3/4         |
| RCP-1 | TACO MODEL 006, 1-1/4 HP, 120 VOLTS. PROVIDE WITH ADJUSTAT.   | HOT WATER RECIRCULATION PUMP                | -         | -    | -          | -           |
| TMV-1 | THERMOSTATIC MIXING VALVE, SYMMONS MODEL 7-200. PROVIDE WITH CABINET AND THERMOMETER.   | THERMOSTATIC MIXING VALVE                   | -         | -    | 3/4        | 3/4         |
| WH-1  | WOODFORD MODEL BBS AUTOMATIC DRAINING FREEZE-LESS WALL HYDRANT WITH 3/4" HOSE CONNECTION AND VACUUM BREAKER. LOOSE TEE KEY OPERATION. PROVIDE WITH CHROME BOX AND DOOR.   | FREEZE-PROOF WALL HYDRANT                   | -         | -    | -          | 3/4         |
| HS-1  | WOODFORD MODEL 24 HOSE BIBB WITH CHROME FINISH, VACUUM BREAKER WITH 3/4" HOSE CONNECTION AND LOOSE TEE KEY OPERATION.   | HOSE BIBB                                   | -         | -    | -          | 3/4         |
| FCD   | FLOOR CLEANOUT - ZURN MODEL ZN-140, WITH SATIN BRONZE TOP, ADJUSTABLE CAST IRON HOUSING, PVC TAPERED PLUG AND OUTLET CONNECTION TO MATCH PIPING. PROVIDE CLAMPING FLANGE FOR FLOORS HAVING A WATERPROOF MEMBRANE. SIZE AS INDICATED ON DRAWINGS.  | FLOOR CLEAN OUT                             | SEE PLAN  | -    | -          | -           |
| FD-1  | FLOOR DRAIN - ZURN MODEL ZN-415, 6" TYPE N STRAINER, WITH CAST IRON HOUSING, ADJUSTABLE SATIN BRONZE TOP, CLAMPING COLLAR, AND OUTLET CONNECTION TO MATCH PIPING SIZE AS INDICATED ON DRAWINGS. PROVIDE "SURESEAL" TRAP SEAL.   | FLOOR DRAIN                                 | SEE PLANS | 2    | -          | -           |
| FD-2  | FLOOR DRAIN - ZURN MODEL ZN-415, 6" TYPE N STRAINER, WITH CAST IRON HOUSING, ADJUSTABLE SATIN BRONZE TOP, CLAMPING COLLAR, AND OUTLET CONNECTION TO MATCH PIPING SIZE AS INDICATED ON DRAWINGS. PROVIDE "SURESEAL" TRAP SEAL.   | FLOOR DRAIN                                 | 4         | 2    | -          | -           |
| FD-3  | FLOOR DRAIN - ZURN MODEL ZN-415, 6" TYPE N STRAINER, WITH CAST IRON HOUSING, ADJUSTABLE SATIN BRONZE TOP, CLAMPING COLLAR, AND OUTLET CONNECTION TO MATCH PIPING SIZE AS INDICATED ON DRAWINGS. PROVIDE "SURESEAL" TRAP SEAL.   | FLOOR DRAIN                                 | 3         | 2    | -          | -           |
| FS-1  | ZURN MODEL 190 FLOOR SINK, 12"x12"x6", ACID RESISTANT ENAMEL COATING, HALF GRATE, DOME STRAINER, TRAP PRIMER CONNECTION, TRAP PRIMER.   | FLOOR SINK                                  | 3         | 2    | -          | -           |
| WCO   | WALL CLEANOUT-ZURN MODEL Z-1441-A-8P WITH BRASS PLUG AND STAINLESS STEEL COVER.   | WALL CLEANOUT                               | SEE PLAN  | -    | -          | -           |
| IBS-1 | 20 GA. MINIMUM STEEL WITH WHITE PAINT. PROVIDE WITH QUARTER TURN BALL VALVE WITH THREADED OUTLET CONNECTION.  | ICE MACHINE BOX                             | -         | -    | -          | 1/2         |
| PRV-1 | PRESSURE REDUCING VALVE - ZURN-WILKINS MODEL 500XLF0 WITH FLANGE CONNECTIONS.   | PRESSURE REDUCING VALVE                     | -         | -    | -          | 2           |
| BFP-1 | WATTS MODEL LF07 DOUBLE CHECK VALVE BACKFLOW PREVENTER.   | DOUBLE CHECK BACKFLOW PREVENTER             | -         | -    | -          | 2           |

GENERAL PLUMBING FIXTURE NOTES: (THESE NOTES APPLY TO ALL APPLICABLE PLUMBING FIXTURES)  
 1. WATER SUPPLY PIPING FROM ANGLE VALVES TO FLUSH TANK TOILETS, LAVATORIES, SINKS AND DRINKING FOUNTAINS SHALL BE BRAIDED STAINLESS STEEL

D

C

B

Order Plans

WWW.DANIELS@

mc millan | patten | smith  
 architects  
 atlanta charlotte columbus  
 asheville greenville  
 p.o. box 9022 greenville, sc 29604 phone: 864.242.2034 fax: 864.242.2034  
 www.mcmillanpattensmith.com



SC STATE UNIVERSITY  
 CAMP HARRY G. DANIELS 1890 EXTENSION  
 FACILITY CONSTRUCTION  
 Agency Review ID: H24-9649-CA  
 116 Camp Daniels Road, Ellenton, SC

SHEET ISSUE NO. DATE DESCRIPTION BY

BID SET 09/15/2017  
 PREPARED BY: SCS  
 PROJECT ENGINEER: SCS  
 DRAWN BY: SCS  
 SHEET TITLE: PLUMBING SCHEDULES AND DETAILS

SHEET NO. PROJ. NO. 015315.00

P0.01