

OA SCHEDULE:

100 LOBBY	312 SF	20 CFM
101 OFFICE	217 SF	15 CFM
102 WORKROOM	202 SF	15 CFM
103 OFFICE	256 SF	15 CFM
107 CORRIDOR	124 SF	15 CFM
108 ALCOVE	225 SF	20 CFM
A OFFICE	118 SF	10 CFM
B OFFICE	120 SF	10 CFM
C OFFICE	119 SF	10 CFM
D OFFICE	118 SF	10 CFM
E OFFICE	119 SF	10 CFM
F OFFICE	119 SF	10 CFM
118 CORRIDOR	267 SF	20 CFM
127 CORRIDOR	203 SF	15 CFM
128 CORRIDOR	251 SF	15 CFM
131 CLASSROOM	650 SF	150 CFM
133 BREAKROOM	200 SF	25 CFM
134 CORRIDOR	278 SF	15 CFM
135 CORRIDOR	389 SF	35 CFM
136 CLASSROOM	689 SF	150 CFM
138A CONF. ROOM	494 SF	125 CFM
138B CONF. ROOM	480 SF	125 CFM
138C CONF. ROOM	483 SF	125 CFM
140 CLASSROOM	938 SF	150 CFM
141 OFFICE	116 SF	5 CFM
144 CLASSROOM	448 SF	45 CFM
145 CORRIDOR	155 SF	10 CFM
146 OFFICE	126 SF	5 CFM
150 OFFICE	119 SF	5 CFM
151 CORRIDOR	710 SF	45 CFM
152 CLASSROOM	574 SF	120 CFM
153 CLASSROOM	579 SF	120 CFM
154 CLASSROOM	579 SF	120 CFM
156 CLASSROOM	644 SF	150 CFM

NOTES:

1. ALL SPACES HAVE OA DUCTED TO THE AIR HANDLER (AHU) THAT SERVES ITS RESPECTIVE SPACE EXCEPT OFFICES 141, 146 & 150. THESE THREE OFFICES HAVE OA SUPPLIED DIRECTLY TO THE SPACE.
2. OA WAS DETERMINED BASED ON THE IAQ PROCEDURE PER ASHRAE 62.1-2010 EXCEPT FOR CORRIDORS. OA FOR CORRIDORS WAS BASED ON VENTILATION RATE PROCEDURE PER ASHRAE 62.1-2010. REFER TO GREEN GLOBES DOCUMENTATION FOR SPACES BASED ON THE IAQ PROCEDURE.

PLAN NOTES:

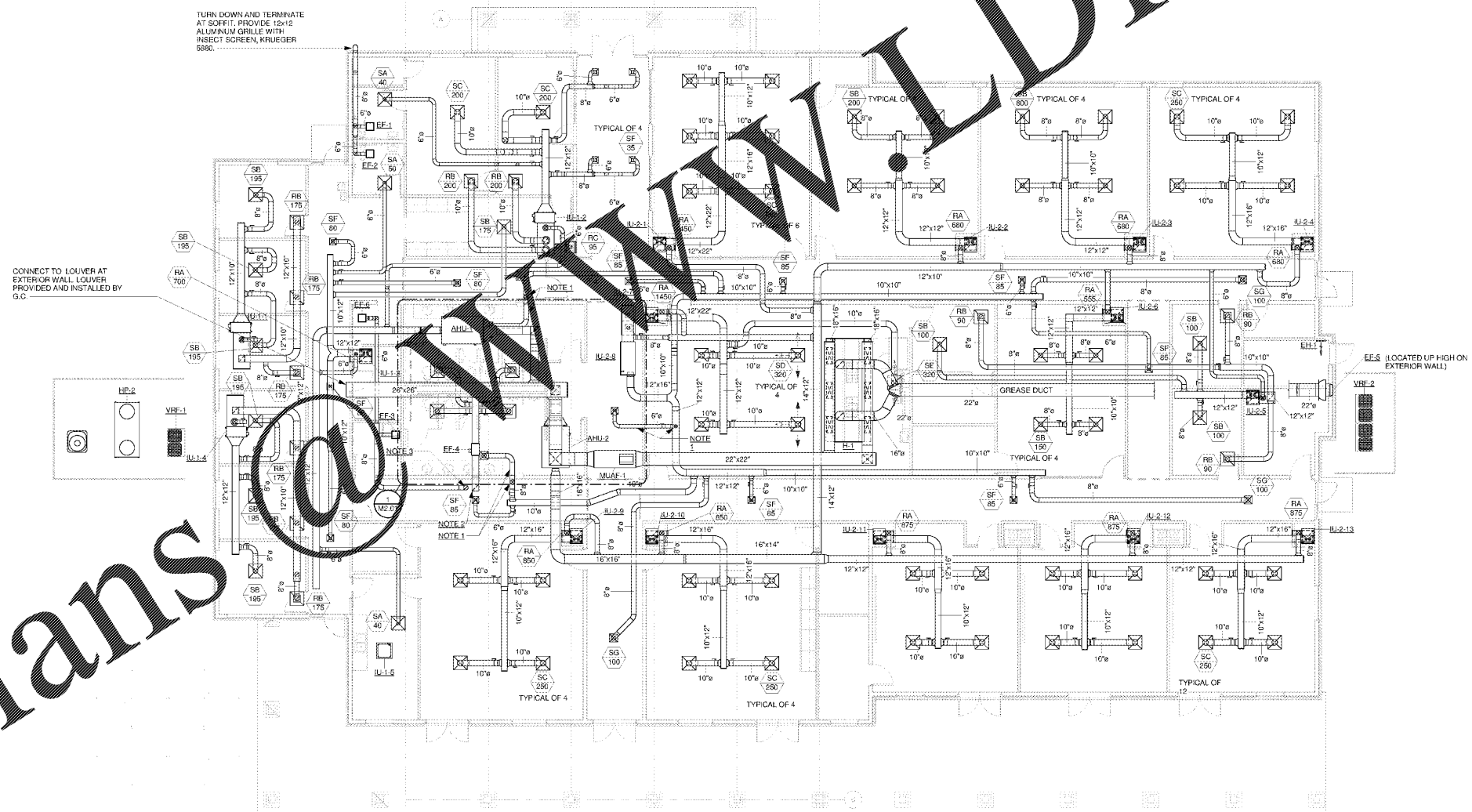
1. BRANCH DUCT SHALL DROP DOWN AND ROUTE IN CEILING SPACE BELOW MECHANICAL PLATFORM.
2. 12"x12" EXHAUST DUCT UP TO RELIEF HOOD ON ROOF. RELIEF HOOD SHALL BE PENN-BARRY MODEL AEG WITH 22.5"x22.5" HOOD SIZE, 14"x14" THROAT SIZE.
3. 6" EXHAUST DUCT UP TO RELIEF HOOD ON ROOF. RELIEF HOOD SHALL BE PENN-BARRY MODEL WCO8.
4. ROUTE CONDENSATE FOR IU-1-1, -1.2 & 1.4 TO FLOOR DRAIN AT IU-1-3.
5. ROUTE CONDENSATE FOR IU-2-5 AND IU-2-15 TO HUB DRAIN IN SPRINKLER RISER ROOM.
6. ROUTE CONDENSATE FOR IU-2-7 TO FLOOR DRAIN IN STORAGE ROOM 142.
7. ROUTE CONDENSATE FOR AHU-1 & AHU-2 TO HUB DRAIN IN JANITOR ROOM.
8. ROUTE CONDENSATE FOR AHU-1 & AHU-2 TO HUB DRAIN IN JANITOR ROOM.

DUCT NOTES:

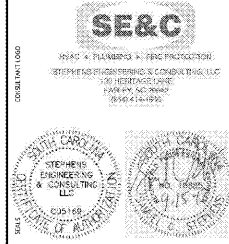
1. EXACT ROUTING OF DUCT SHALL BE BASED ON COORDINATION WITH ROOF TRUSS PROFILES, COORDINATE WITH G.C. AND ROOF TRUSS MANUFACTURER TO PROVIDE OPENINGS.
2. ALL WORK SHALL BE COORDINATED WITH THE GC AND WITH ALL OTHER TRADES.
3. DIFFUSER AND GRILLE LOCATIONS SHALL BE COORDINATED WITH THE ARCHITECTURAL REFLECTED CEILING PLAN.
4. COORDINATE EXACT THERMOSTAT LOCATIONS WITH OWNER AND GC. REFER TO M-02 FOR THERMOSTAT LOCATIONS.
5. PROVIDE CLEAN FILTERS PRIOR TO AIR BALANCING.
6. REFRIGERANT PIPE SIZES AND REQUIREMENTS SHALL BE IN ACCORDANCE WITH EQUIPMENT MANUFACTURER'S REQUIREMENTS.
7. NO DUCT, PIPING, EQUIPMENT OR ANY OTHER MATERIAL SHALL BE PROCURED OR DELIVERED TO THE JOBSITE PRIOR TO BEING FULLY COORDINATED WITH JOBSITE CONDITIONS, THE GC AND ALL OTHER TRADES.
8. CONDENSATE PIPING SHALL BE SCHEDULE 40 PVC.

GENERAL NOTES:

1. ALL WORKS SHALL BE PER THE INTERNATIONAL MECHANICAL CODE (IMC).
2. ALL WORK SHALL BE COORDINATED WITH THE GC AND WITH ALL OTHER TRADES.
3. DIFFUSER AND GRILLE LOCATIONS SHALL BE COORDINATED WITH THE ARCHITECTURAL REFLECTED CEILING PLAN.
4. COORDINATE EXACT THERMOSTAT LOCATIONS WITH OWNER AND GC. REFER TO M-02 FOR THERMOSTAT LOCATIONS.
5. PROVIDE CLEAN FILTERS PRIOR TO AIR BALANCING.
6. REFRIGERANT PIPE SIZES AND REQUIREMENTS SHALL BE IN ACCORDANCE WITH EQUIPMENT MANUFACTURER'S REQUIREMENTS.
7. NO DUCT, PIPING, EQUIPMENT OR ANY OTHER MATERIAL SHALL BE PROCURED OR DELIVERED TO THE JOBSITE PRIOR TO BEING FULLY COORDINATED WITH JOBSITE CONDITIONS, THE GC AND ALL OTHER TRADES.
8. CONDENSATE PIPING SHALL BE SCHEDULE 40 PVC.



1 HVAC PLAN
1/8" = 1'-0"



SC STATE UNIVERSITY
CAMP HARRY G. DANIELS 1890 EXTENSION
 FACILITY CONSTRUCTION
 Agency Review ID: H24-9649-CA
 116 Camp Daniels Road, Ellenton, SC

SHEET ISSUE NO.	DATE	DESCRIPTION	BY

BID SET 09/15/2017
 PROJECT IN CHARGE: SCS
 PROJECT ENGINEER: SCS
 DESIGN BY: SCS

SHEET TITLE:
HVAC PLAN

SHEET NO. PROJ. NO.
 015315.00

M1.01

Order Plans

mc millan | parrish | smith
 architects
 atlanta charlotte columbus
 p.o. box 8022 greenville, sc 29602-8022
 864.242.2034
 www.mcmillanparrishsmith.com