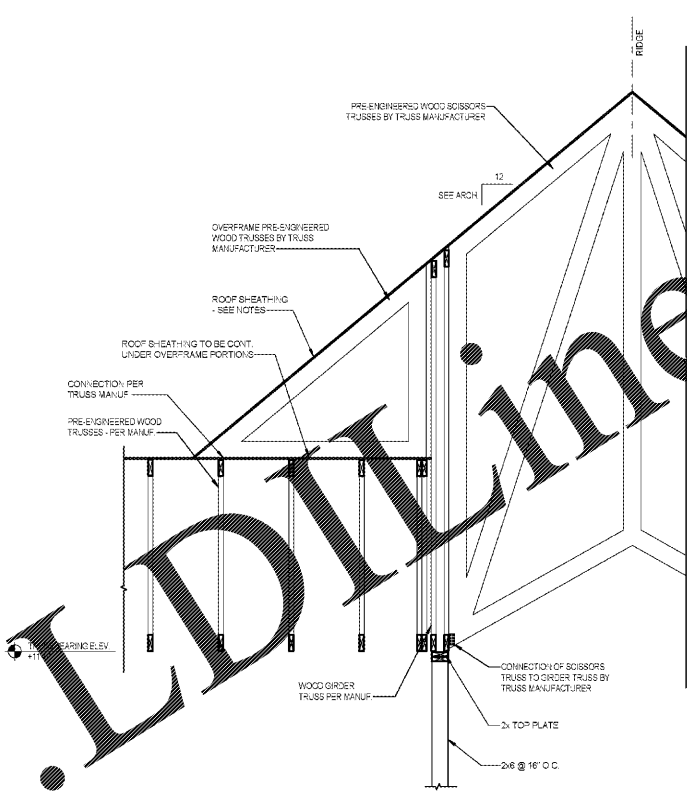
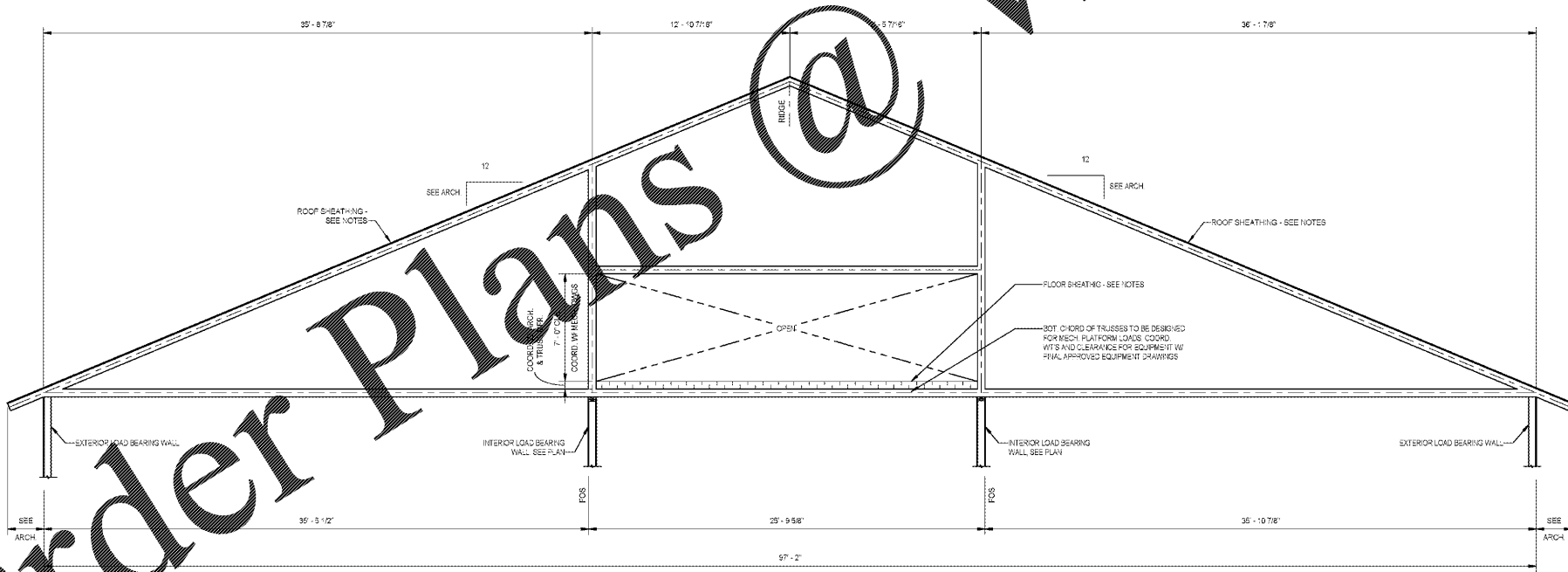


- NOTE**
- 1) SPECIAL PRE-ENGINEERED HEAVY TIMBER TRUSS TO BE DESIGNED BY TRUSS MANUFACTURER
  - 2) SEE GENERAL NOTES SHEET FOR DESIGN CRITERIA AND LOADS REQUIRED FOR DESIGN OF TRUSS
  - 3) ALL TRUSS CONNECTIONS MUST BE HOT DIP GALVANIZED, 1/4" MIN. A36 STEEL PLATE W/ 3/4" DIA. MIN. THRU BOLTS

**1 T-1 - PRE-ENGINEERED HEAVY TIMBER TRUSS DIAGRAM**  
S4.03 1/2" = 1'-0"



**3 SECTION**  
S4.03 1/2" = 1'-0"



- NOTE**
- 1) SPECIAL PRE-ENGINEERED WOOD TRUSS TO BE DESIGNED BY PRE-ENGINEERED WOOD TRUSS MANUFACTURER
  - 2) SEE GENERAL NOTES SHEET FOR DESIGN CRITERIA AND LOADS REQUIRED FOR DESIGN OF TRUSS

**MECHANICAL PLATFORM TRUSS**

**2 DETAIL**  
S4.03 1/4" = 1'-0"

**FULLER mc millan | parsons | smith**  
STRUCTURAL ARCHITECTURE  
atlanta charlotte columbus greenville  
ashveville greenville sc 29604-2033 864.242.2034  
www.fuller-mc-millan-parsons-smith.com

1890 EXTENSION SC STATE UNIVERSITY  
**CAMP HARRY G. DANIELS 1890 EXTENSION FACILITY CONSTRUCTION**  
Agency Review ID: H24-9649-CA  
116 Camp Daniels Road, Ellenton, SC

**SHEET ISSUE**

NO.	DATE	DESCRIPTION	BY
1	2016.04.15	OSC Technical Development	WTF
2	2016.04.20	Design Development Review	WTF
3	2016.12.28	OSC Construction Document	WTF
4	2017.01.17	OSC Construction Review	WTF
5	2017.04.17	OSC CON REVIEW	WTF
6	2017.04.18	OSC CON REVIEW	WTF

OSC BD DRAWINGS 2017.06.08  
PROJECT ENGINEER: WTT  
DESIGN BY: JMM  
NEW

SHEET TITLE:  
**SECTIONS & DETAILS**

SHEET NO. 131.40.00  
PROJ. NO. 131.40.00

**S4.03**