

ROOM FINISH SCHEDULE									
ROOM #	ROOM NAME	FLOOR	BASE	N	S	E	W	CEILING FINISH	ROOM SIGN
100	ENTRANCE LOBBY	VCT-1	RB	PAINT	PAINT	PAINT	PAINT	TONGUE AND GROOVE	ACT
101	ADMIN ASSIST OFFICE	OPT-1	RB					ACT	YES
102	WORK ROOM	VCT-1	RB					ACT	YES
103	DIRECTOR OFFICE	OPT-1	RB					ACT	YES
104	CLOSET	OPT-1	RB					ACT	YES
106	PRIVATE TOILET	CT-1	RB					ACT	YES
107	STAFF TOILET	CT-1	RB					ACT	YES
108	CORRIDOR	VCT-1	RB					GYP	YES
109	ALCOVE	VCT-1	RB					ACT	YES
110	OFFICE A	OPT-1	RB					ACT	YES
111	OFFICE B	OPT-1	RB					ACT	YES
112	OFFICE C	OPT-1	RB					ACT	YES
113	OFFICE D	OPT-1	RB					ACT	YES
114	OFFICE E	OPT-1	RB					ACT	YES
115	OFFICE F	OPT-1	RB					ACT	YES
116	IT ROOM	VCT-1	RB					ACT	YES
117	MECH/ELEC	SC	RB					ACT	YES
118	JAN CLOSET	VCT-1	RB					GYP	YES
119	COORIDOR	VCT-1	RB					GYP	YES
120	WOMEN BATHROOM	CT-1	CT-1	CT-2	CT-3	CT-1	CT-2	CT-3	ACT
121	MEN BATHROOM	CT-1	CT-1	CT-2	CT-3	CT-1	CT-2	CT-3	ACT
122	LEADERSHIP TRAINING	VCT-1	RB	PAINT	PAINT	PAINT	PAINT	ACT	YES
123	STORAGE	VCT-1	RB					ACT	YES
124	BREAK ROOM	CT-1	RB					ACT	YES
125	CORRIDOR	VCT-1	RB					GYP	YES
126	CORRIDOR	VCT-1	RB					GYP	YES
127	AFTERS & CRAFT ROOM	VCT-1, VCT-2	RB					ACT	YES
128	STORAGE	VCT-1	RB					ACT	YES
129	STORAGE	VCT-1	RB					ACT	YES
130	CONFERENCE ROOM A	OPT-1, OPT-2	RB					GYP	YES
131	CONFERENCE ROOM B	OPT-1, OPT-2	RB					GYP	YES
132	CONFERENCE ROOM C	OPT-1, OPT-2	RB					GYP	YES
133	CULINARY INSTRUCTION ROOM	CT-1	RB					ACT	YES
134	OFFICE	OPT-1	RB					ACT	YES
135	STORAGE	VCT-1	RB					ACT	YES
136	STORAGE	OPT-1	RB					ACT	YES
137	STORAGE	OPT-1	RB					ACT	YES
138	RESEARCH LAB	OPT-1	RB					ACT	YES
139	CORRIDOR	VCT-1	RB					GYP	YES
140	OFFICE I	VCT-1	RB					ACT	YES
141	STORAGE	SC	RB					ACT	YES
142	SPRINKLER RISER ROOM	SC	RB					ACT	YES
143	ELECTRICAL	SC	RB					ACT	YES
144	OFFICE G	VCT-1	RB					ACT	YES
145	CORRIDOR	VCT-1	RB					GYP	YES
146	CLASSROOM A	VCT-1, VCT-2	RB					ACT	YES
147	CLASSROOM B	VCT-1, VCT-2	RB					ACT	YES
148	CLASSROOM C	VCT-1, VCT-2	RB					ACT	YES
149	CLOSET	VCT-1	RB					ACT	YES
150	COMPUTER LAB	VCT-1	RB	PAINT	PAINT	PAINT	PAINT	ACT	YES
151	MEZZANINE LEVEL	EXPOSED	NA	UNFINISHED	UNFINISHED	UNFINISHED	UNFINISHED	GYP	YES

INTERIOR FINISH MATERIAL SCHEDULE							
Key Name	MANUFACTURER	PATTERN / ITEM NUMBER	COLOR	DIMENSIONS	INSTALLATION METHOD / FINISH	NOTES	CONTACT
ACOUSTICAL CEILING TILE	ARMSTRONG	OPTIMA - TECULAR					
CERAMIC TILING							
CT-1	DALTILE	VERANDA SOLIDS	GRAVEL	18" x 20"			
CT-2	DALTILE	VERANDA SOLIDS	GRAVEL	4" x 20"			
CT-3	DALTILE	VERANDA SOLIDS	GRAVEL	6" x 13"			
CONCRETE							
SC-1							
INTERIOR ALUMINUM FRAME							
YKX	AP ANODIZED PLUS		YGRN DARK BRONZE				
PAINTING							
PNT-1	SHERWIN WILLIAMS		7567 NATURAL TAN		FLAT	GENERAL INTERIOR WALL PAINT	
PNT-2	SHERWIN WILLIAMS		7567 NATURAL TAN		SATIN	GENERAL GWB CEILING PAINT	
RESINOUS FLOORING							
EPF-1	DURA-FLEX	ACCELEERA B	COMET				
EPB-1	DURA-FLEX	ACCELEERA B	COMET				
SOLID SURFACE COUNTERTOPS							
SS-1	COPIAN		DEEP SPACE				
SS-2	COPIAN		DEEP NOCTURNE				
TILE COMPETING							
OPT-1	MILLIKEN	REMIX 2.0 - TEMPO TRAILINE	TMP108-130-DJ WITH SCARLET	24" x 24"			
OPT-2	MILLIKEN	CITY PROPER - UNDERGROUND	UDG169 CHELSEA	24" x 24"			
VINYL COMPOSITION TILE							
VCT-1	ARMSTRONG	STANDARD EXCELON IMPERIAL	51956 SANDRFT WHITE	12" x 12"			
VCT-2	ARMSTRONG	PREMIUM EXCELON CHROMASPIN	54821 ALTAZIR CRIMSON	12" x 12"			

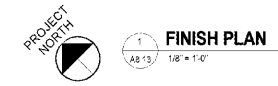
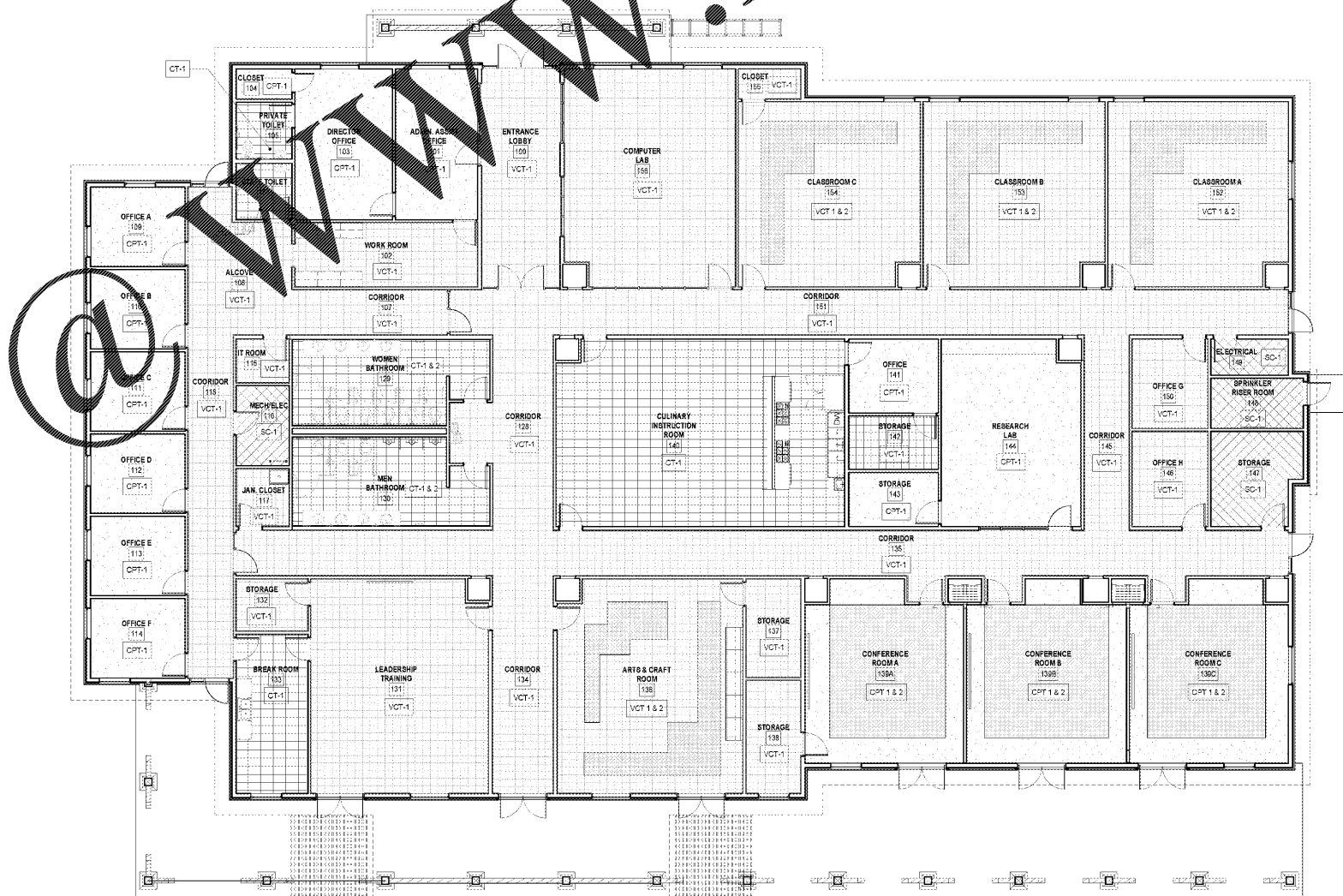
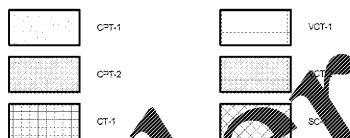
FINISH SCHEDULE NOTES/REMARKS

ALTOUR
FOR ALTERNATE NUMBER THREE OMIT THE GYPSUM BOARD SOFFIT AND ASSOCIATED METAL SUPPORT STRUCTURE AND TAKE ACOUSTICAL CEILING PANEL TO PERIMETER WALLS OF PLAYER LOCKER ROOM

GENERAL FINISH NOTES

- A. WHERE SPECIFIC PRODUCTS ARE INDICATED, ITEM DESIGNATION INCORPORATES QUALITY AND AESTHETIC APPEARANCE. SEE SPECIFICATIONS FOR EQUAL MANUFACTURER'S PER PRODUCT TYPE INDICATED. ACTUAL COLOR OR SELECTION MAY VARY PER BIDDING OUTCOME DEPENDING ON LOCATION OF ITEM. ALTERNATES SHALL MATCH IN COLOR, TEXTURE, AS WELL AS PERFORMANCE CRITERIA, AS APPROVED BY ARCHITECT.
- B. REFERENCE REFLECTED CEILING PLANS FOR EXTENT / LOCATION OF CEILING FINISH DESIGNATIONS AND HEIGHTS AND FOR CONFIGURATIONS OF INDICATED CEILING FINISHES AND MISCELLANEOUS GYPSUM BOARD SOFFITS AND CEILING.
- C. ALL INTERIOR HOLLOW METAL DOORS AND FRAMES, TO BE PAINTED () UNLESS NOTED OTHERWISE.
- D. ALL PAINT COLORS AND LOCATIONS ARE TO BE FIELD VERIFIED WITH ARCHITECT PRIOR TO APPLICATION.
- E. WHERE ROOMS ARE SCHEDULED FOR EXPOSED PAINTED CEILINGS, PAINTING SHALL INCLUDE STRUCTURE, FLOOR OR ROOF DECK, DUCTWORK, AND PIPING AND CONDUIT EXPOSED TO VIEW, UNLESS NOTED OTHERWISE, CONFIRM COLOR WITH ARCHITECT.
- F. ALL INTERIOR WOOD DOORS TO RECEIVE STAIN FINISH CONFIRM STAIN COLOR WITH ARCHITECT PRIOR TO APPLICATION.
- G. INTERIOR SURFACE OF EXTERIOR DOORS & FRAMES SHALL BE PAINTED, COLOR TO BE SELECTED BY ARCHITECT.
- H. ALL EXPOSED WIREMOLD SHALL BE PAINTED TO MATCH ADJACENT WALLS.
- I. PAINT ALL WALL GRILLES (PROVIDED BY MECHANICAL CONTRACTOR) TO MATCH ADJACENT WALL COLOR (VERIFY COLOR WITH ARCHITECT PRIOR TO PAINTING), UNLESS NOTED OTHERWISE. ALUMINUM LINEA BAR GRILLES ARE NOT TO BE PAINTED.
- J. SEE SHEET A10.13 FOR FLOOR MATERIAL TRANSITION DETAILS. ALL TRANSITIONS FROM ONE FLOOR FINISH TO ANOTHER SHALL USE THE APPROPRIATE TRANSITION MATERIAL.

FINISH PLAN LEGEND



1890 EXTENSION SC STATE UNIVERSITY
CAMP HARRY G. DANIELS 1890 EXTENSION FACILITY - RE - BID
 Agency Review ID: H24-9649-CA
 116 Camp Daniels Road, Ellenton, SC

SHEET ISSUE			
NO.	DATE	DESCRIPTION	BY
0	2018.03.29	As-Bid Package	MM

BD SET
 OSE REVIEW SUBMITTAL 11/17/2017

DESIGNED BY: SS
 PROJECT ARCHITECT: MA
 DRAWN BY: SS / CS

SHEET TITLE:
FINISH FLOOR PLAN

SHEET NO. **A8.13** PROJ. NO. 13140.00



mc millan | parsons | smith
 architects
 atlanta charlotte columbia greenville harrisburg
 asheville atlanta charlotte columbia greenville harrisburg
 p.o. box 8922 greenville, sc 29615-8922 | 864.242.2034
 www.mcmillanparsonsmith.com