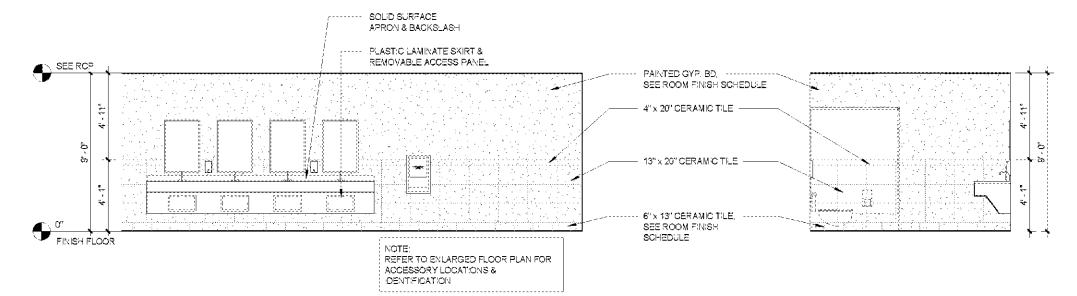
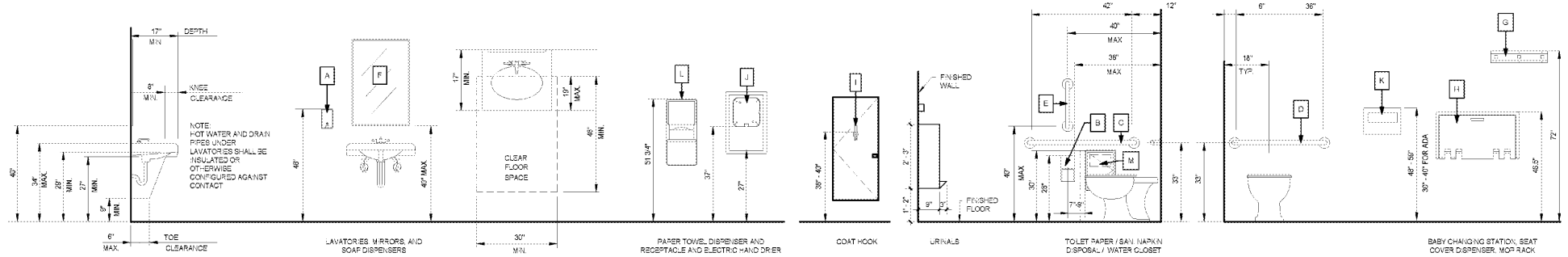


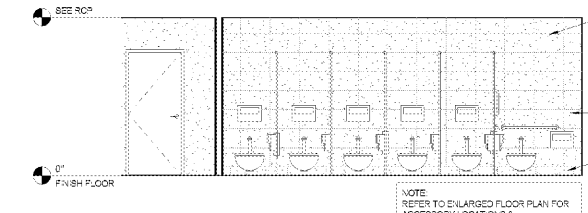
TOILET FIXTURE LEGEND		
ID	ACCESSORY	DESCRIPTION / BASIS OF DESIGN
A	SOAP DISPENSER	BOBRCK 3-2111 SURFACE MOUNT
B	TOILET PAPER DISPENSER	BOBRCK 3-4288 SURFACE MOUNT
C	42" GRAB BAR	BOBRCK 3-5806 X42
D	36" GRAB BAR	BOBRCK 3-5806 X36
E	18" GRAB BAR	BOBRCK 3-5806 X18
F	MIRROR	BOBRCK 3-5905 2436
G	MOP AND BROOM RACK	BOBRCK 3-223-36
H	SEAT COVER DISPENSER AND WASTE RECEPTACLE	BOBRCK 3-9221 SURFACE MOUNT
I	PAPER TOWEL DISPENSER	BOBRCK 3-4369 RECESSED
J	MASK DISPOSAL	BOBRCK 3-954 SURFACE MOUNT
NOTE: MODEL #S SHOWN ARE BASIS OF DESIGN. PRODUCTS EQUAL CAN BE USED WITH APPROVAL FROM THE ARCHITECT. SEE MOUNTING HEIGHT DETAIL FOR ADDITIONAL INFORMATION.		
1. CONTRACTOR SHALL INSTALL BLOCKING IN WALLS AT LOCATIONS OF TOILET ACCESSORIES.		
2. CONTRACTOR SHALL INSTALL EQUIPMENT PER MANUFACTURER'S SPECIFICATIONS. CONTRACTOR SHALL INSTALL PER A.D.A. MOUNTING HEIGHTS. REFER TO MANUFACTURER'S SPECIFICATIONS SHEETS.		
3. CONTRACTOR SHALL PROVIDE AND INSTALL UNDER-SINK PPE MOUNTING COVER FOR MOP AND BROOM RACK MAX OR EQUAL.		
4. SEE ENLARGED TOILET PLANS FOR EXACT FIXTURE LOCATIONS.		

**TOILET ACCESSORIES LEGEND**  
1/2" = 1'-0"



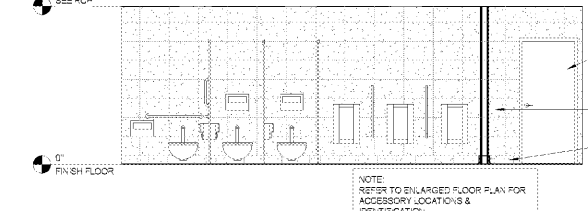
**WOMEN ELEVATION NORTH**  
1/4" = 1'-0"

**WOMEN ELEVATION WEST**  
1/4" = 1'-0"



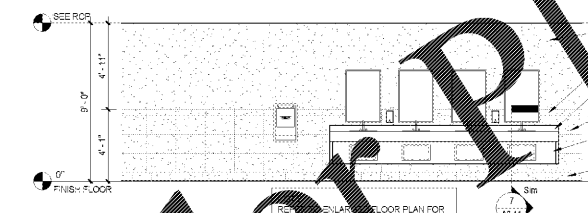
**WOMEN ELEVATION SOUTH**  
1/4" = 1'-0"

**WOMEN ELEVATION EAST**  
1/4" = 1'-0"



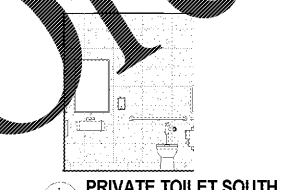
**MEN INTERIOR ELEVATION NORTH**  
1/4" = 1'-0"

**MEN INTERIOR ELEVATION EAST**  
1/4" = 1'-0"

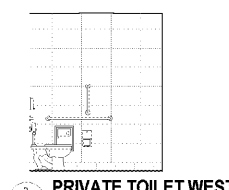


**MEN INTERIOR ELEVATION SOUTH**  
1/4" = 1'-0"

**MEN RESTROOM ELEVATION WEST**  
1/4" = 1'-0"



**PRIVATE TOILET SOUTH**  
1/4" = 1'-0"



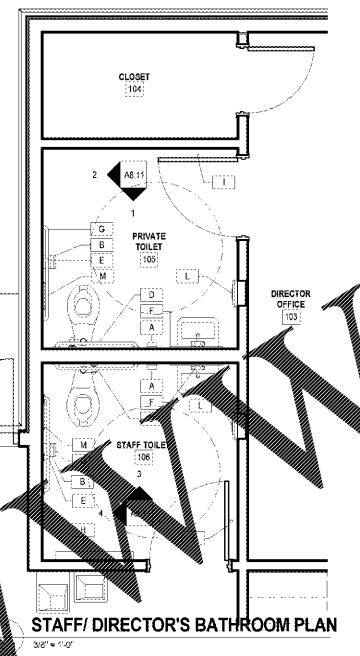
**PRIVATE TOILET WEST**  
1/4" = 1'-0"



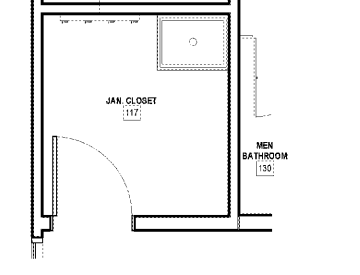
**STAFF TOILET NORTH**  
1/4" = 1'-0"



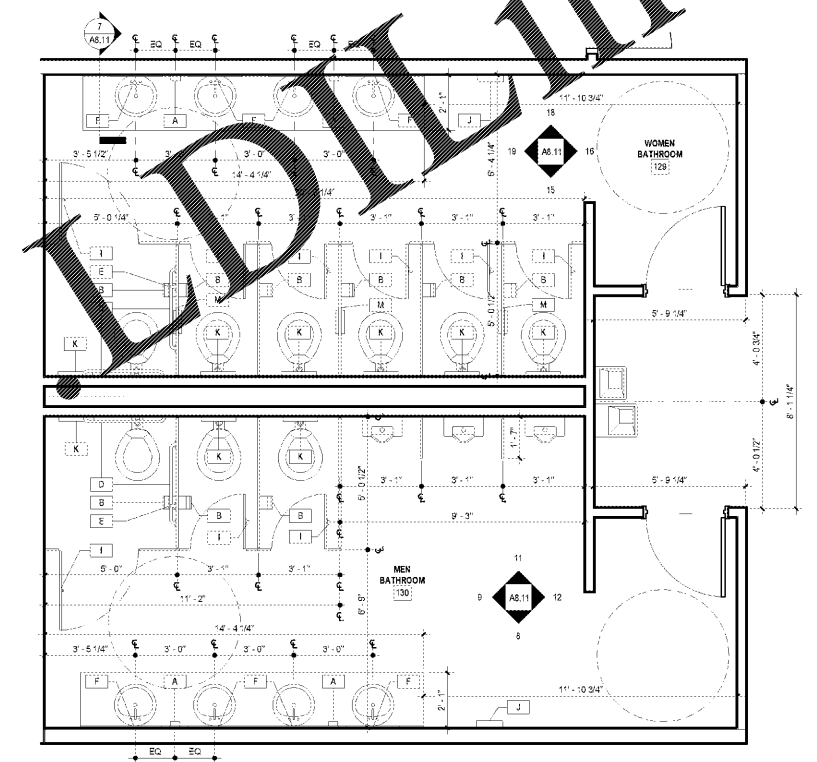
**STAFF TOILET WEST**  
1/4" = 1'-0"



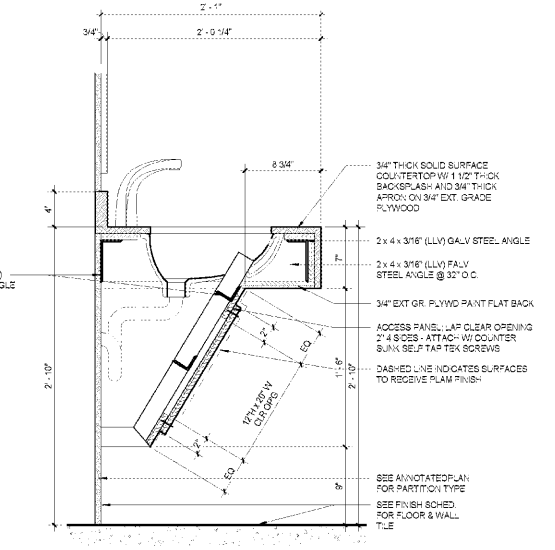
**STAFF/DIRECTOR'S BATHROOM PLAN**  
3/8" = 1'-0"



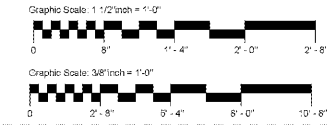
**JAN. CLOSET PLAN**  
3/8" = 1'-0"



**ENLARGED RESTROOM PLAN**  
3/8" = 1'-0"



**SECTION DETAIL - LAVATORY**  
1/2" = 1'-0"



**mc millan | parsons | smith**  
architects  
atlanta charlotte columbus  
ashville greenville hickory jacksonville  
p.o. box 8922 greenville, sc 29616-8922  
tel: 864.242.2034  
fax: 864.242.2034  
www.mcmls.com



1890 EXTENSION SC STATE UNIVERSITY  
**CAMP HARRY G. DANIELS 1890 EXTENSION FACILITY - RE - BID**  
Agency Review ID: H24-9649-CA  
116 Camp Daniels Road, Ellenton, SC

SHEET ISSUE			
NO.	DATE	DESCRIPTION	BY
1	2018.03.29	As-Bid Package	MM

**BD SET**  
OSI REVIEW SUBMITTAL 11/17/2017

DESIGNED BY: CS  
PROJECT ARCHITECT: MM  
DRAWN BY: SS / CS

**SHEET TITLE:**  
ENLARGED TOILET PLANS AND ELEVATIONS / TYPICAL MOUNTING HEIGHTS

SHEET NO. **A8.11** PROJ. NO. 13140.00

Order Plans @ WWWW