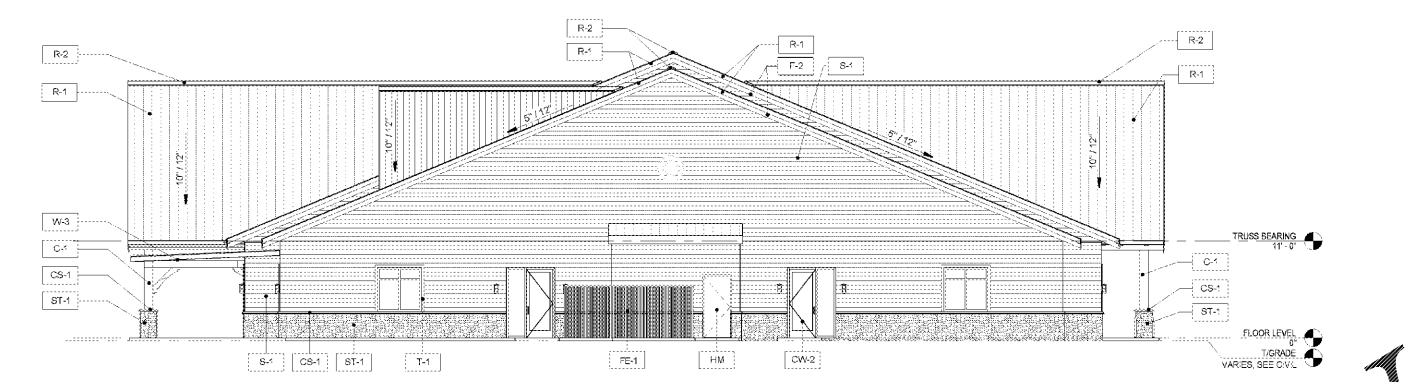
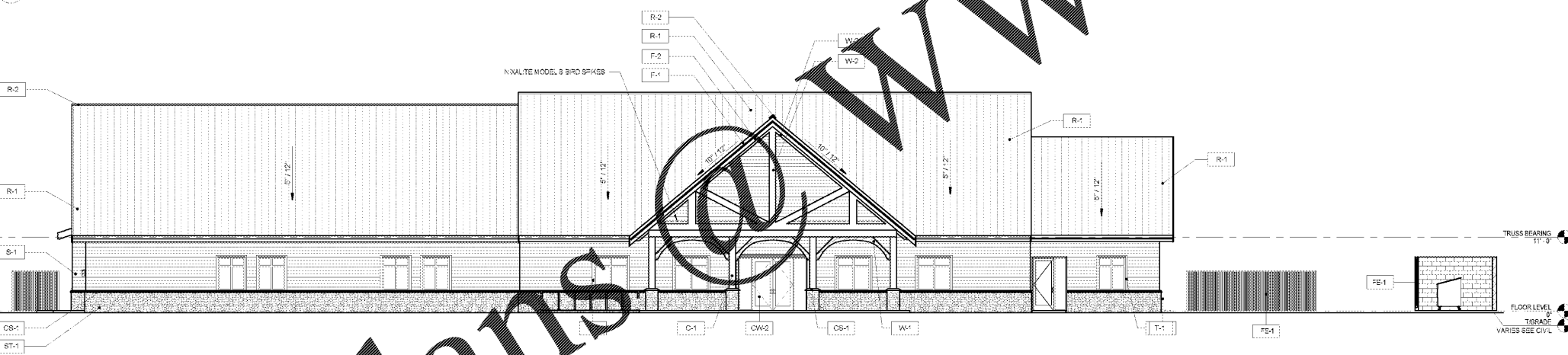


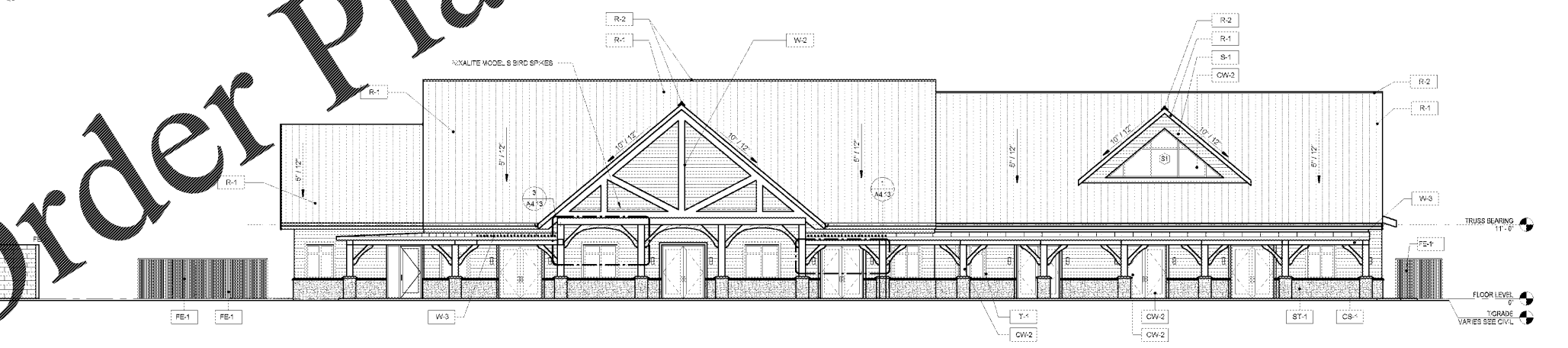
WEST ELEVATION
1/8" = 1'-0"



EAST ELEVATION
1/8" = 1'-0"



NORTH ELEVATION (CAMP SIDE)
1/8" = 1'-0"



SOUTH ELEVATION (POND SIDE)
1/8" = 1'-0"

EXTERIOR FINISH MATERIAL SCHEDULE							
TAG	MATERIAL	DESCRIPTION / BASIS OF DESIGN	MANUFACTURER	ITEM NUMBER	FINISH / COLOR	DIMENSIONS	NOTES
C-1	WOOD / TIMBER	COLUMN			STAIN AS SELECTED BY ARCHITECT		
CS-1	CAST STONE	LIGHTWEIGHT CAST STONE TRIM					
F-1	FASCIA / CEMENT BOARD					1" x 6"	SEE 404.13
F-2	FASCIA / CEMENT BOARD					1" x 12"	
FE-1	ALUMINUM FENCE		ALUMI-GUARD	FORTRESS BOARD ON BOARD			
HM-1	HOLLOW METAL DOOR & FRAME						SEE DOOR SCHED.
L-1	LIGHT FIXTURE, WALL MOUNTED	SEE ELEC					APPROX. 7' 6" AFF TO C.C.L.
M-1	METAL PLATE	COORD. W/ STRUCT FOR SIZE & FINISH					
R-1	METAL ROOF	2" STANDING BEAM METAL ROOF	PAC-CLAD	TITLE-LOC PANEL			
R-2	RIDGE CAP	MATCH W/ STANDING BEAM METAL ROOF					
S-1	LAP SIDING	HARDIEPLANK	JAMES HARDIE	CEDAR-MILL		5/8" x 7 1/4"	
SF-1	STOREFRONT ALUMINUM FRAME		"KK AP	YES 600	YBEN DARK BRONZE		SEE DOOR SCHED.
SF-2	STOREFRONT GLASS		PPG	SOLARBROUNZE			1" INSULATED GLASS UNIT
ST-1	MASONRY VENEER	MASONRY VENEER	BORAL	ANCIENT V.L.L. LEDGESTONE	CHIANHI		
T-1	TRIM	HARDIETRIM	JAMES HARDIE	44 SMOOTH			AS NEEDED
W-1	WOOD / TIMBER	HEAVY TIMBER BRACKET			STAIN AS SELECTED BY ARCHITECT		SEE SCHEDULE A4
W-2	WOOD / TIMBER	HEAVY TIMBER TRUSS			STAIN AS SELECTED BY ARCHITECT		SEE STRUCT.
W-3	WOOD / TIMBER	DECORATIVE TRUSS			STAIN AS SELECTED BY ARCHITECT		SEE STRUCT.
W-4	WOOD / TIMBER	TRELLIS FRAMING					

EXTERIOR ELEVATION MATERIAL KEY	
TAG	DESCRIPTION
C-1	HEAVY TIMBER COLUMN
CS-1	LIGHTWEIGHT CAST STONE TRIM
CW-1	CURTAIN WALL ALUMINUM FRAME
CW-2	CURTAIN WALL GLASS
F-1	FASCIA / CEMENT BOARD
F-2	FASCIA / CEMENT BOARD
FE-1	ALUMINUM FENCE
HM-1	HOLLOW METAL DOOR & FRAME
L-1	WALL MTD. LIGHT FIXTURE
M-1	METAL PLATE
R-1	METAL ROOF
R-2	RIDGE CAP
S-1	LAP SIDING
ST-1	ADHERED STONE
T-1	TRIM
W-1	HEAVY TIMBER BRACKET
W-2	HEAVY TIMBER TRUSS
W-3	DECORATIVE TRUSS
W-4	TRELLIS FRAMING

mc millan | parsons | smith
architects
ashville charlotte charleston
p.o. box 8922 greenville, sc 29604-8922
www.mcsmillanparsonsmith.com



1890 EXTENSION SC STATE UNIVERSITY
CAMP HARRY G. DANIELS 1890 EXTENSION FACILITY - RE - BID
Agency Review ID: H24-9649-CA
116 Camp Daniels Road, Ellenton, SC

SHEET ISSUE			
NO.	DATE	DESCRIPTION	BY
1	2018.05.29	As-Bid Package	MM

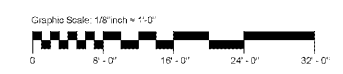
BD SET
OSE REVIEW SUBMITTAL 11/17/2017

PRINCIPAL IN CHARGE: SS
PROJECT ARCHITECT: MA
DESIGNER: SS / CS

SHEET TITLE:
EXTERIOR ELEVATIONS

SHEET NO. PROJ. NO.
13140.00

A5.11



ALL IMPRINTS, SPECIFICATIONS AND NOTES ARE THE PROPERTY OF ARCHITECTURAL RECORDS, INC. AND SHALL REMAIN THE PROPERTY OF ARCHITECTURAL RECORDS, INC. ANY REPRODUCTION OR DISTRIBUTION OF THIS DOCUMENT WITHOUT THE WRITTEN PERMISSION OF ARCHITECTURAL RECORDS, INC. IS STRICTLY PROHIBITED. ARCHITECTURAL RECORDS, INC. IS NOT RESPONSIBLE FOR ANY ERRORS OR OMISSIONS IN THIS DOCUMENT. ARCHITECTURAL RECORDS, INC. IS NOT RESPONSIBLE FOR ANY DAMAGE TO PERSONS OR PROPERTY CAUSED BY THE USE OF THIS DOCUMENT. ARCHITECTURAL RECORDS, INC. IS NOT RESPONSIBLE FOR ANY DAMAGE TO PERSONS OR PROPERTY CAUSED BY THE USE OF THIS DOCUMENT. ARCHITECTURAL RECORDS, INC. IS NOT RESPONSIBLE FOR ANY DAMAGE TO PERSONS OR PROPERTY CAUSED BY THE USE OF THIS DOCUMENT.