

SYMBOL	DESCRIPTION	MOUNTING HEIGHT TO CENTERLINE UNLESS NOTED OTHERWISE
⊕	SINGLE RECEPTACLE, 3 WIRE GROUND TYPE	18"
⊕	DUPLEX RECEPTACLE, 3 WIRE GROUND TYPE	18"
⊕	DUPLEX RECEPTACLE, 3 WIRE GROUND TYPE - BLACK	18"
⊕	DUPLEX RECEPTACLE, CEILING MOUNTED	---
⊕	DUPLEX RECEPTACLE, WEATHERPROOF	18"
⊕	GROUND FAULT PROTECTED DUPLEX RECEPTACLE	18"
⊕	ISOLATED GROUND DUPLEX RECEPTACLE	18"
⊕	ISOLATED GROUND DOUBLE DUPLEX (QUADRUPLEX) RECEPTACLE	18"
⊕	DOUBLE DUPLEX (QUADRUPLEX) RECEPTACLE	18"
⊕	ELECTRIC PANEL	6'-0" TO TOP
⊕	EMERGENCY INVERTER	AS REQUIRED
⊕	TRANSFORMER	AS REQUIRED
⊕	SAFETY SWITCH (NON-FUSED)	AS REQUIRED
⊕	SAFETY SWITCH (FUSED)	AS REQUIRED
⊕	SINGLE POLE SWITCH WITH OR WITHOUT PILOT LIGHT	AS REQUIRED
⊕	DIMMING SWITCH (0-10V) WITH INDICATOR LIGHT (LEVITON I710-DLZ-WH)	AS REQUIRED
⊕	MANUAL MOTOR STARTING SWITCH (1, 2, OR 3 POLE)	AS REQUIRED
⊕	MOTOR - 1 PHASE	AS REQUIRED
⊕	TIME CLOCK	AS REQUIRED
⊕	TELEPHONE OUTLET	18"
⊕	COMBINATION TELEPHONE/DATA OUTLET	18"
⊕	DATA OUTLET	18"
⊕	LOW VOLTAGE PUSH BUTTON	48"
⊕	COMBINATION BUZZER/BELL	AS REQUIRED
⊕	LOW VOLTAGE TRANSFORMER	AS REQUIRED
⊕	SPEAKER	---
⊕	INTRUSION DETECTION SYSTEM KEYPAD AND ANNUNCIATOR	AS REQUIRED
⊕	WIRELESS ACCESS POINT (WAP)	---
⊕	FIRE ALARM DUCT MOUNTED SMOKE DETECTOR	---
⊕	REMOTE ALARM/TEST SWITCH FOR DUCT DETECTOR	AS REQUIRED
⊕	CAMERA (SECURITY DOME)	CEILING MOUNTED
⊕	SHOPPER TRACK	CEILING MOUNTED
⊕	THERMOSTAT	48"
⊕	SENSOR	48"
⊕	ZONE DAMPER (MOTORIZED)	---
⊕	WALL MOUNTED OCCUPANCY SENSOR (HUBBELL DUAL TECHNOLOGY #AD277M)	44"
⊕	WALL MOUNTED VACANCY SENSOR (HUBBELL HRMS40N)	44"
⊕	CEILING MOUNTED OCCUPANCY SENSOR (HUBBELL DUAL TECHNOLOGY #ATD2000C AND CUB00A CONTROL UNIT)	---
⊕	CEILING MOUNTED WIRELESS OCCUPANCY SENSOR (LUTRON #LRF2-OCRZB-P-NH)	---
⊕	DAYLIGHT DIMMING SENSOR (SENSOR SWITCH CMR-PC-ADC) MOUNTING LOCATION AND SENSITIVITY SETTINGS TO BE FIELD DETERMINED	---
⊕	WIRELESS DAYLIGHT DIMMING SENSOR (LUTRON #LRF2-DCRB-NH) MOUNTING LOCATION AND SENSITIVITY SETTINGS TO BE FIELD DETERMINED	---
⊕	DAYLIGHT SENSOR (SENSOR SWITCH CMR-PC) MOUNTING LOCATION AND SENSITIVITY SETTINGS TO BE FIELD DETERMINED	---
(E)	EXISTING	---
(R)	RELOCATED	---
(C)	CEILING MOUNTED	---

- DESIGN DRAWINGS ARE SCHEMATIC. THE CONTRACTOR SHALL VISIT THE SITE PRIOR TO BIDDING OR AWARD OF CONTRACT TO INSPECT EXISTING FIELD CONDITIONS. THE CONTRACTOR SHALL INCLUDE ALL LABOR AND MATERIALS NECESSARY FOR FIELD MODIFICATIONS DUE TO EXISTING CONDITIONS.
- THE CONTRACTOR SHALL CONTACT THE ARCHITECT, ENGINEER OR TENANT PRIOR TO BIDDING FOR INTERPRETATIONS AND CLARIFICATIONS OF THE DESIGN AND INCLUDE IN THIS BID ALL COSTS TO MEET THE DESIGN INTENT. CLARIFICATIONS MADE BY THE ARCHITECT, ENGINEER OR TENANT AFTER BIDDING WILL BE FINAL AND SHALL BE IMPLEMENTED AT THE CONTRACTORS COST.
- BIDDING CONTRACTORS SHALL HAVE A WORKING KNOWLEDGE OF LOCAL CODES AND ORDINANCES AND SHALL INCLUDE IN THEIR BIDS THE COSTS FOR ALL WORK INSTALLED IN STRICT ACCORDANCE WITH GOVERNING CODES. THE PLANS AND SPECIFICATIONS NOT WITHSTANDING, THE CONTRACTOR SHALL ALERT ARCHITECT, ENGINEER OR TENANT OF ANY APPARENT DISCREPANCIES BETWEEN GOVERNING CODES AND DESIGN INTENT.
- REFER TO MECHANICAL PLAN FOR LOCATION OF MECHANICAL EQUIPMENT. FIELD VERIFY EXACT LOCATIONS. PROVIDE ALL CONVENIENCE RECEPTACLES, SAFETY SWITCHES, WIRING, OR OTHER EQUIPMENT TO ENSURE A COMPLETE AND OPERABLE HVAC SYSTEM.
- CONDUIT FOR DATA/TELEPHONE OUTLETS AND LOW VOLTAGE CABLING SHALL HAVE A PULL/JUNCTION BOX INSTALLED AFTER EACH SET OF THREE 90 DEGREE BENDS.
- LABEL ALL COVERPLATES ON INSIDE FACE OF PLATE WITH CIRCUIT NUMBER AND PANEL DESIGNATION. I.E. 'A-1'. CIRCUIT SHALL BE WRITTEN WITH PERMANENT MARKER IN A CONTRASTING COLOR.
- ELECTRICAL CONTRACTOR SHALL PROVIDE ALL REQUIRED TELEPHONE, DATA, LOW VOLTAGE CABLING AND MAKE NECESSARY CONNECTIONS.
- ALL HORIZONTAL CABLING FOR VOICE AND DATA SHALL BE CATEGORY 6E RATED.
- PROVIDE ALL BACKBOXES AND CONDUIT FOR THE COMMUNICATIONS OUTLETS.
- ALL CABLES AND DEVICES TO BE INSTALLED ABOVE FINISHED CEILING SHALL BE PLENUM RATED OR IN CONDUIT.
- REFER TO SPECIFICATIONS SECTIONS 26 27 26 WIRING DEVICES, FOR EXACT MODEL NUMBER OF DEVICES TO BE USED.
- FIELD VERIFY ALL CONDITIONS.
- FIRE ALARM PLANS MUST BE ENGINEERED AND WET SIGNED AND SEALED BY A LANDLORD APPROVED, LICENSED, REGISTERED FIRE ALARM CONTRACTOR IN THE LOCAL JURISDICTION. GENERAL CONTRACTOR SHALL FIELD VERIFY AND COORDINATE REQUIREMENTS WITH LANDLORD PRIOR TO BID AND INCLUDE THE COST OF THIS WORK IN THIS BID.
- OWNER TO TERMINATE ALL NETWORK CABLING TO DEVICES.

- ELECTRICAL SERVICE EQUIPMENT:
MODIFY ELECTRICAL EQUIPMENT AS REQUIRED PER GENERAL NOTES, SPECIFICATIONS, AND AS SHOWN ON FLOOR PLANS, AND RISER DIAGRAM. COORDINATE WITH LANDLORD AND DEMO PLANS AND VAD2. MAINTAIN CODE REQUIRED CLEARANCES FOR ALL EQUIPMENT PER NEC 110.26. THE REQUIRED CLEAR SPACE SHALL BE PLAINLY IDENTIFIED BY PERMANENT MARKING IN A CONTRASTING COLOR ON THE FLOOR.
- MECHANICAL EQUIPMENT CONNECTIONS:
PROVIDE FEEDERS AND DISCONNECTS PER MECHANICAL EQUIPMENT FEEDER/CONNECTION SCHEDULE. REFER TO DETAIL 'D' ON SHEET E4.0.
- HVAC RECEPTACLE:
PROVIDE GFI DUPLEX RECEPTACLE ADJACENT TO UNIT IF NOT EXISTING OR FURNISHED WITH EQUIPMENT. CIRCUIT AS INDICATED, FURNISH WEATHER PROOF ENCLOSURES AND COVERS AS REQUIRED.
- HVAC THERMOSTAT/SENSOR:
THERMOSTAT/SENSOR TO BE RELOCATED TO THIS LOCATION, COORDINATE EXACT LOCATION WITH TENANT REPRESENTATIVE. PROVIDE 4" SQUARE BACKBOX AND 1/2" CONDUIT BACK TO HVAC UNIT. MECHANICAL CONTRACTOR TO PROVIDE WIRING AND MAKE CONNECTION TO HVAC UNIT. COORDINATE EXACT REQUIREMENTS WITH MECHANICAL CONTRACTOR.
- SHOW WINDOW RECEPTACLE - CEILING:
EXISTING DUPLEX RECEPTACLES WITH 'SF' DESIGNATION SHALL BE MOUNTED FLUSH IN CEILING AT STOREFRONT PARALLEL TO STOREFRONT GLASS. REFER TO ARCHITECTURAL SHEETS FOR LOCATIONS. COORDINATE LOCATIONS WITH LOCAL ARCHITECTURAL ELEMENTS AND SHOW WINDOW LIGHTING. ROUTE CIRCUIT THROUGH CONTRACTOR CONTROLLED BY TIME CLOCK. REFER TO LIGHTING CONTROL DETAIL 'L' ON SHEET E2.0.
- CASHWRAP-DEDICATED RECEPTACLE:
20-AMP-120V-DEDICATED CIRCUIT-QUADRUPLEX RECEPTACLE-FOR CASH REGISTER-LOCATE AS DIRECTED BY TENANT/ARCHITECT-CIRCUIT AS INDICATED-ROUTE BACK TO PANELBOARD-SEE NOTE #22 FOR CONDUIT AND ROUTING REQUIREMENTS.
- CASHWRAP TELEPHONE/DATA OUTLET:
EXISTING DUPLEX RECEPTACLES WITH 'SF' DESIGNATION SHALL BE MOUNTED FLUSH IN CEILING AT STOREFRONT PARALLEL TO STOREFRONT GLASS. REFER TO ARCHITECTURAL SHEETS FOR LOCATIONS. COORDINATE LOCATIONS WITH LOCAL ARCHITECTURAL ELEMENTS AND SHOW WINDOW LIGHTING. ROUTE CIRCUIT THROUGH CONTRACTOR CONTROLLED BY TIME CLOCK. REFER TO LIGHTING CONTROL DETAIL 'L' ON SHEET E2.0.
- TELEPHONE BOARD:
EXISTING TELEPHONE BOARD TO REMAIN. EXISTING QUADRUPLEX RECEPTACLE WITH DEDICATED CIRCUIT MOUNTED ON TELEPHONE BOARD.
- SHOPPER TRACK:
EXACT LOCATION OF CEILING MOUNTED SHOPPER TRACK SENSOR SHALL BE DETERMINED BY VENDOR. PROVIDE 3/4" CONDUIT, BUSHINGS ON ENDS AND CAT 6E CABLE (WITH 5' COILED AT EACH END) FROM TELEPHONE BOARD TO WITHIN 2 FEET OF ENTRY DOORS-USE SEPARATE CONDUIT FOR EACH SENSOR. IF THERE ARE MORE THAN ONE SET OF ENTRY DOORS-USE SEPARATE CONDUIT AT TELEPHONE BOARD-SHOPPER TRACK-GENERAL CONTRACTOR SHALL MARK LOCATIONS OF CONDUIT END POINTS ON AS-BUILTS.
- WIRELESS ACCESS POINT (WAP) - OWNER PROVIDED:
PROVIDE 3/4" CONDUIT FROM EACH WAP TO THE TELEPHONE BOARD. PROVIDE CABLING, INSTALL DEVICE AND MAKE FINAL CONNECTIONS. MARK CONDUIT AT TELEPHONE BOARD 'WI-FI'.
- SOUND SYSTEM:
MOUNT DUPLEX RECEPTACLE AND 4"x4" JUNCTION BOX AT TELEPHONE BOARD FOR SOUND SYSTEM. PROVIDE SOUND SYSTEM-FURNISH AND INSTALL CONDUIT AND SPEAKER WIRE FROM SOUND SYSTEM SPEAKERS IN SALES AREA TO JUNCTION BOX AT TELEPHONE BOARD. SPEAKER CONNECTION TO SOUND SYSTEM-COORDINATE EXACT REQUIREMENTS WITH TENANT REPRESENTATIVE/VENDOR.
- EXISTING DUCT SMOKE DETECTOR/REMOTE TEST STATION:
DUCT MOUNTED SMOKE DETECTOR IS EXISTING TO REMAIN. GENERAL CONTRACTOR SHALL VERIFY INTERLOCK OF SMOKE DETECTOR WITH HVAC UNIT, REMOTE TEST ALARM STATION AND FIRE ALARM SYSTEMS AS REQUIRED. MAKE ALL FINAL CONNECTIONS AS REQUIRED FOR A COMPLETE SYSTEM. HVAC UNIT SHALL SHUT DOWN UPON ACTIVATION OF SMOKE DETECTOR.

- FIRE ALARM SYSTEM CONTROL PANEL:
EXISTING FIRE ALARM CONTROL PANEL TO REMAIN. COORDINATE FINAL TIE-IN AND TESTING OF FIRE ALARM SYSTEM. FIELD VERIFY EXACT LOCATION AND REQUIREMENTS PRIOR TO BID. REFER TO FIRE ALARM RISER DIAGRAM AND NOTES. DETAIL 'R' ON SHEET E4.0 FOR ADDITIONAL INFORMATION. EXISTING 'RYAN BOX' TO PANEL BUS TO REMAIN FOR FIRE ALARM CIRCUIT PER BUILDING/FIRE DEPARTMENT REQUIREMENTS. VERIFY PRIOR TO BID.
- FIRE ALARM MANUAL-PULL STATION:
EXISTING FIRE ALARM MANUAL-PULL STATION TO REMAIN. FIELD VERIFY EXACT LOCATION AND REQUIREMENTS.
- FIRE ALARM HORN/STROBE:
EXISTING (E) FIRE ALARM HORN/STROBE TO REMAIN. RELOCATE (R) EXISTING FIRE ALARM SPEAKER/STROBE AS SHOWN OR PROVIDE NEW (N) AS SHOWN AND CONNECT TO PANEL. FIELD VERIFY EXACT LOCATION AND REQUIREMENTS. THE DEVICE SHALL MATCH EXISTING MAKE AND MANUFACTURER OF EXISTING DEVICES.
- EXISTING FIRE ALARM STROBE:
EXISTING FIRE ALARM STROBE TO REMAIN. FIELD VERIFY EXACT LOCATION AND REQUIREMENTS.
- EXISTING FIRE ALARM CEILING MOUNTED SMOKE DETECTOR TO REMAIN. FIELD VERIFY EXACT LOCATION AND REQUIREMENTS.
- FIRE ALARM REMOTE ANNUNCIATOR PANEL:
PROVIDE FIRE ALARM REMOTE ANNUNCIATOR PANEL AND CONNECT TO FIRE ALARM CONTROL PANEL. FIELD VERIFY EXACT LOCATION AND REQUIREMENTS.
- JUNCTION BOX FOR CONNECTION TO LANDLORD FIRE ALARM SYSTEM. COORDINATE EXACT REQUIREMENTS AND LOCATION WITH LANDLORD PRIOR TO INSTALLATION.
- PROVIDE PLENUM RATED CAT 6E CABLE (WITH 5' COILED AT EACH END) FROM SECURITY CAMERA TO ABOVE MANAGER DESK. CONFIRM QUANTITY AND FINAL LOCATIONS WITH RETAIL NEXT PRIOR TO INSTALLATION.
- TRAFFIC CAMERA PRIMARY SENSOR:
EXISTING DELIVERED BUZZER SYSTEM TO REMAIN, INCLUDING EXISTING PUSH-BUTTON AT REAR DOOR. EXISTING TRANSFORMER AND RELOCATED BUZZERS AS INDICATED. COORDINATE ALL REQUIREMENTS WITH TENANT AS TO LOCATIONS. REFER TO 'MAIL L' ON SHEET E4.0 FOR ADDITIONAL INFORMATION.
- TRAFFIC CAMERA SECONDARY ANTENNAE:
PROVIDE 4"x4" JUNCTION BOX FOR PRIMARY SENSOR. PROVIDE PLENUM RATED CAT 6E CABLE (WITH 5' COILED AT EACH END) FROM PRIMARY SENSOR TO ABOVE MANAGER DESK. CONFIRM QUANTITY AND FINAL LOCATIONS WITH RETAIL NEXT PRIOR TO INSTALLATION.
- FIRE ALARM CEILING MOUNTED SMOKE DETECTOR:
RELOCATE EXISTING FIRE ALARM CEILING MOUNTED SMOKE DETECTOR AND CONNECT TO FIRE ALARM CONTROL PANEL. FIELD VERIFY EXACT LOCATION AND REQUIREMENTS.

OWNER:
UNTUCKIT
SHIRTS DESIGNED TO BE WORN UNTUCKED.
110 GREENE STREET
SUITE 400
DURHAM, NC, 27701

ARCHITECT/ENGINEER:
SHREMESHOCK
North Carolina Firm
License Number: #C-3048
www.shremeshock.com

Shremeshock Architects & Engineers, Inc.
7400 W. Campus Rd. Ste. 150 New Albany, OH 43054
T: 614 545 4550 | F: 614 545 4559

DESIGN TYPE:
PROJECT LOCATION:
THE STREETS AT SOUTHPOINT
6910 FAYETTEVILLE RD
SPACE#: 1140
DURHAM, NC 27713

REVISIONS:
REQUIRED BY: _____ DATE: _____

DRAWN BY: JWH
CHECKED BY: KAH

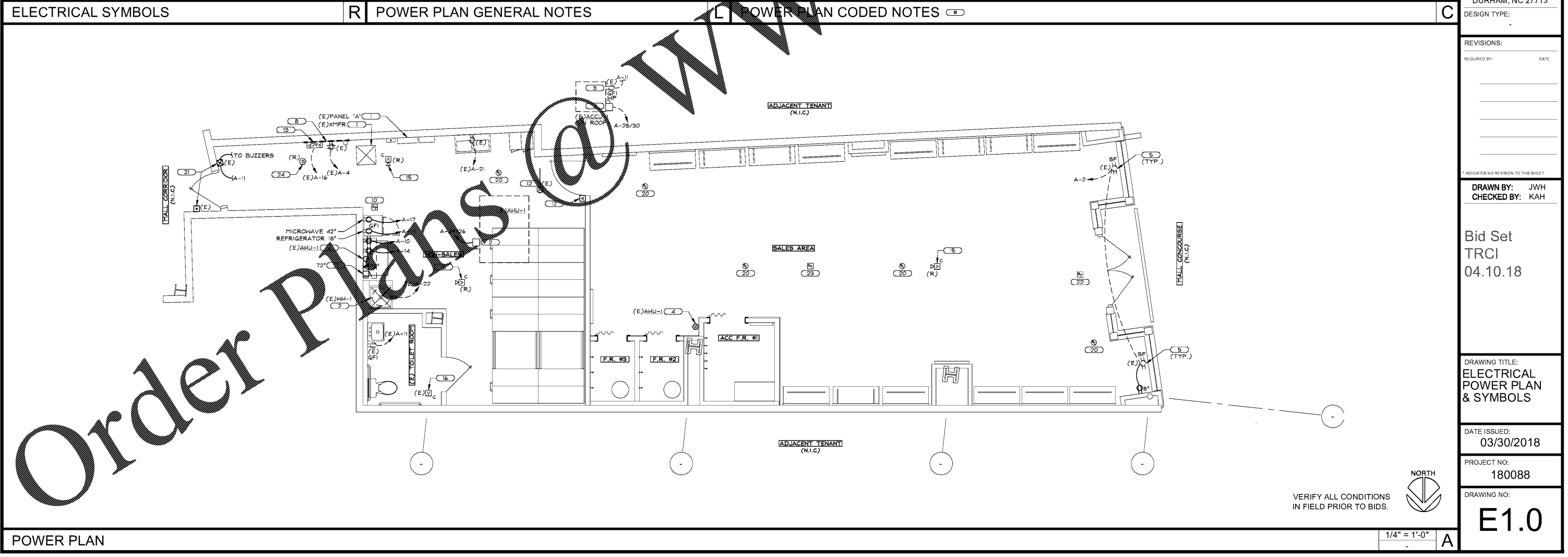
Bid Set
TRCI
04.10.18

DRAWING TITLE:
ELECTRICAL
POWER PLAN
& SYMBOLS

DATE ISSUED:
03/30/2018

PROJECT NO:
180088

DRAWING NO:
E1.0



88 PLOTTED: 3/30/2018 8:23 PM

POWER PLAN

VERIFY ALL CONDITIONS
IN FIELD PRIOR TO BIDS.



1/4" = 1'-0" A