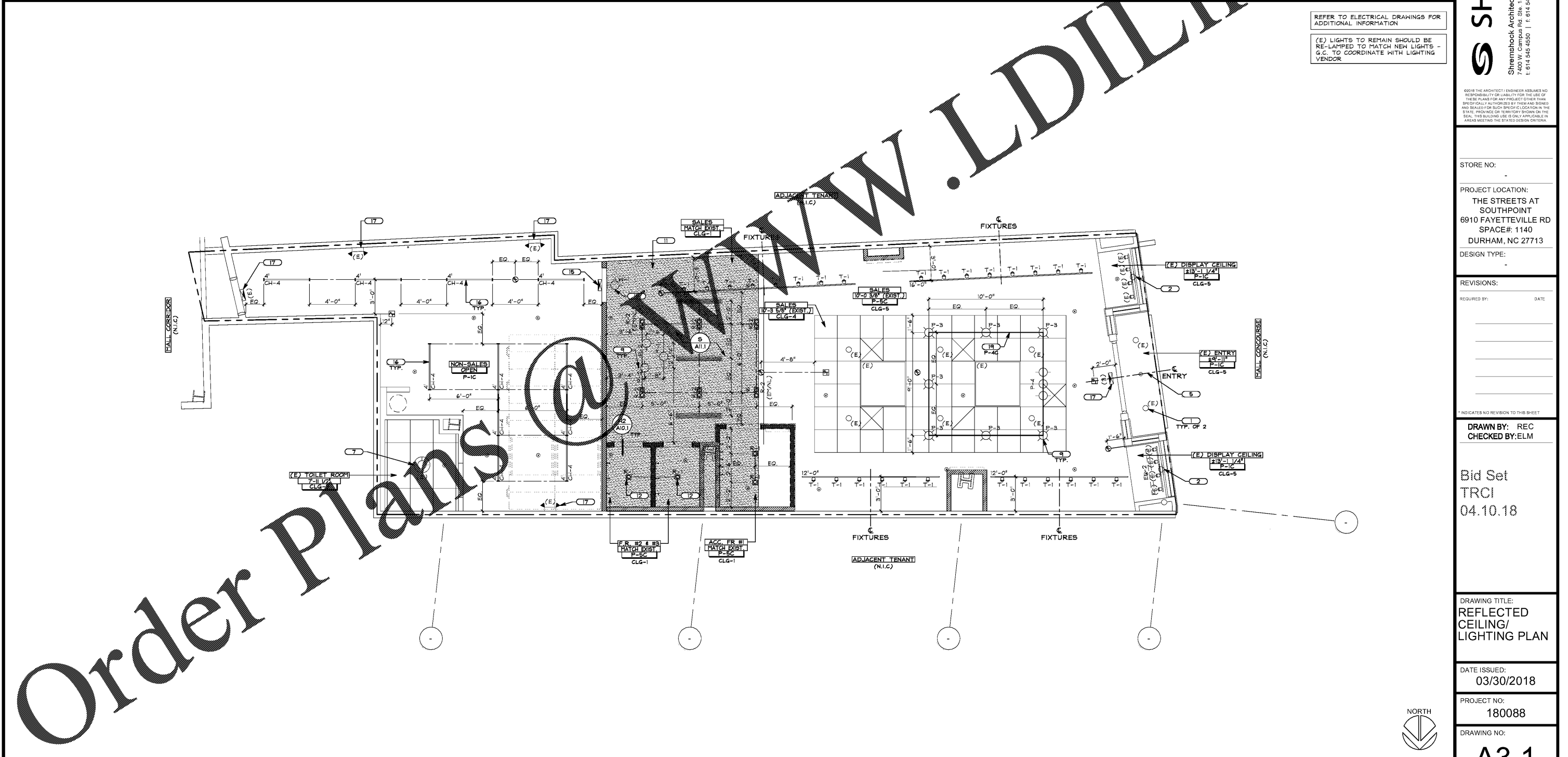


SYMBOL	DESCRIPTION	SYMBOL	DESCRIPTION	#	DESCRIPTION
T-1	TRACK HEAD	(E)	EXISTING EXIT SIGN, TEST UNIT IS IN GOOD WORKING ORDER AND REPLACE DAMAGED OR MISSING UNITS	1	EXISTING RECESSED ENTRY LIGHT. G.C. TO CLEAN AND RE-LAMP. REPLACE TRIM RING WITH WHITE TO MATCH NEW FINISHES IF REQUIRED
X'	SURFACE TRACK SYSTEM	EX-1	WALL MOUNTED EXIT SIGN WITH BATTERY BACKUP - EDGE LIT	2	EXISTING OUTLET IN CEILING TO REMAIN
R-1	IX1 OR IX2 RECESSED LIGHT FIXTURE WITH EMERGENCY BACKUP AS REQUIRED (REFER TO ELECTRICAL SHEETS)	EX-2	CEILING MOUNTED EXIT SIGN WITH BATTERY BACKUP- EDGE LIT	3	HOLD END OF LIGHT TRACK AND SPIDER TRACK 4" OFF FROM FACE OF WALL
P-1	PENDANT LIGHT FIXTURE	EL	EMERGENCY LIGHT	4	LINE OF BULKHEAD ABOVE
W-1	WALL MOUNTED LIGHT FIXTURE	(E)	(E) EMERGENCY LIGHT, TEST UNIT IS IN GOOD WORKING ORDER AND REPLACE DAMAGED OR MISSING UNITS	5	CENTERLINE OF ENTRY DOORS, EXIT SIGN, TRAFFIC COUNTER & LIGHT FIXTURES
(E)	(E) RECESSED DOWNLIGHT	(E)	(E) RESTROOM FAN / LIGHT FIXTURE. G.C. TO CLEAN AND RE-LAMP.	6	MINIMUM ACCESS PANEL FOR STOREFRONT SIGN. G.C. TO ENSURE J-BOX IS DISCONNECT FOR SIGN ARE ACCESSIBLE FROM THIS LOCATION. IF NOT, NOTIFY OWNERS-TM FOR DIRECTION.
EM/NL	LED EMERGENCY DOWNLIGHT / NIGHT LIGHT	(E)	RECESSED EXISTING CEILING MOUNTED SOUND SPEAKERS	7	(E) SPEAKERS TO REMAIN. G.C. TO REPAIR/REPLACE TO LIKE NEW CONDITION
(E) R	(E) LIGHT FIXTURE - G.C. TO CLEAN AND RELAMP AS REQUIRED	WAP	WIRELESS ACCESS POINT	8	B.O. LIGHT FIXTURES TO BE MOUNTED AT 6'-10" A.F.F. (P-1), 6'-8" A.F.F. (P-2), 8'-5" A.F.F. (P-3), 6'-8" A.F.F. (P-4)
XX-X	FLUORESCENT STRIP - CH-4 CHAIN HUNG / CH-3 CHAIN HUNG W/ WIRE GUARD / CL-5 CEILING MOUNTED / S-X SURFACE MOUNTED	T	SHOPPER TRAK	9	START TILE
(E)	(E) SURFACE MOUNTED FLUORESCENT FIXTURE	S	SECURITY CAMERA / NEST CAMERA	10	HATCHED AREA INDICATES LOCATION OF NEW GYP. BD. CEILING. G.C. TO ENSURE NEW CEILING IS FLUSH AND SMOOTH WITH (E) CEILING. MATCH (E) CONSTRUCTION.
(E) X	(E) OR NEW HVAC DISTRIBUTION	SEC	SECURITY CAMERA / NEST CAMERA	11	CENTER RECESSED LIGHT FIXTURE OVER FITTING ROOM
		EL	EDGE-LIT LED SIGN - REFER TO ELECTRICAL SHEETS FOR POWER	12	CENTER WALL FIXTURE OVER OPENING. MOUNT BOTTOM OF FIXTURE AT 7'-8" A.F.F.
				13	G.C. TO RENOVATE / PROVIDE NEW TILE AND GRID AT NEW CONSTRUCTION (SHOWN SHADED)
				14	LOCATE CENTER OF EXIT LIGHT ON CENTERLINE OF DOORWAY/OPENING AS DIMENSIONED FROM WALL OR SOFFIT OR DIRECTLY AGAINST WALL AS SHOWN
				15	B.O. LIGHT FIXTURES TO BE MOUNTED AT 13'-0" A.F.F.
				16	EXISTING EXIT SIGN AND/OR EMERGENCY LIGHT TO REMAIN. G.C. TO VERIFY FUNCTIONALITY
				17	NEW TRIMLESS CEILING MOUNTED ACCESS PANEL. REFER TO DETAIL R-1111
				18	SURFACE MOUNTED CONDUIT. G.C. TO PAINT P-4C. REFER TO FINISH SCHEDULE

LIGHTING FIXTURE SCHEDULE M CODED NOTES H GENERAL NOTES D



REFLECTED CEILING / LIGHTING PLAN

- ENTIRE SALES / NON-SALES FLOOR AREA TO BE FULLY SPRINKLERED IN COMPLIANCE WITH ALL CODE REQUIREMENTS - REFER TO M.E.P. DRAWINGS
- G.C. MUST MAINTAIN ACCESS TO LANDLORD'S HVAC, ELECTRICAL, AND PLUMBING SYSTEMS, INCLUDING CLEANOUTS, VALVES, DAMPERS, J" BOXES, SMOKE DETECTORS, ETC. G.C. TO SUPPLY AND INSTALL ACCESS PANELS FLUSH WITH ADJACENT FINISHES AS REQUIRED TO PERMIT SERVICING TO ALL EQUIPMENT LOCATED ABOVE THE CEILING. IF G.C. IS DIRECTED BY THE LANDLORD AND/OR INSPECTOR TO PROVIDE ACCESS PANELS AT LOCATIONS THAT ARE NOT SPECIFIED ON THE PLANS THE G.C. MUST CONTACT CONSTRUCTION MANAGER PRIOR TO THE COMMENCEMENT OF ANY WORK. ANY WORK DONE PRIOR TO CONTACTING THE CONSTRUCTION MANAGER IS THE SOLE RESPONSIBILITY OF THE G.C. AND ALL COST RELATED TO RELOCATING THESE ITEMS A SECOND TIME, AFTER CONSTRUCTION MANAGER DISCUSSES OPTIONS WITH APPROPRIATE PARTIES, WILL BE BACK CHARGED TO THE G.C.
- ALL CEILING HEIGHTS ARE FROM TOP OF FINISH FLOOR TO UNDERSIDE OF FINISH CEILING U.N.O.
- DO NOT PAINT SPEAKER COVERS, SPRINKLER HEAD COVERS, LIGHT COVES, OR TRIM RINGS
- ALL LIGHT TRIM IS TO BE STRAIGHT THROUGHOUT THE STORE, RUNNING PARALLEL TO OPENINGS
- ALL LAMPS IN RECESSED CANS TO BE TURNED THE SAME DIRECTION
- ALL EXISTING LIGHT FIXTURES ARE TO BE CLEANED AND RE-LAMPED AS NOTED
- G.C. TO APPLY A FINE BEAD OF WHITE CAULK ALONG THE PERIMETER OF A.C.'S GRID WHERE IT MEETS DRYWALL FINISH
- G.C. TO VERIFY IN FIELD THE EXISTING GYPSUM BOARD CONDITIONS PRIOR TO FINAL BID SUBMISSION AND NOTE IF CEILING NEEDS REPLACED. CEILING IS TO BE ACCURATE FOR IN THE BID.

REFER TO ELECTRICAL DRAWINGS FOR ADDITIONAL INFORMATION

(E) LIGHTS TO REMAIN SHOULD BE RE-LAMPED TO MATCH NEW LIGHTS - G.C. TO COORDINATE WITH LIGHTING VENDOR

OWNER: **UNTUCKIT**  
SHIRTS DESIGNED TO BE WORN UNTUCKED.  
110 GREENE STREET SUITE 400 DURHAM, NC, 27701

ARCHITECT / ENGINEER: **SHREMSHOCK**  
North Carolina Firm License Number: 152014  
Shremshock Architects, Inc. License Number: 43954  
7400 W. Clampus Rd. Ste. 150 New Albany, OH 43054  
T: 614 545 4550 F: 614 545 4555

STORE NO: -

PROJECT LOCATION:  
THE STREETS AT SOUTHPOINT  
6910 FAYETTEVILLE RD  
SPACE#: 1140  
DURHAM, NC 27713

DESIGN TYPE: -

REVISIONS:

REQUIRED BY: \_\_\_\_\_ DATE: \_\_\_\_\_

\*INDICATES NO REVISION TO THIS SHEET

DRAWN BY: REC  
CHECKED BY: ELM

Bid Set  
TRCI  
04.10.18

DRAWING TITLE:  
REFLECTED CEILING/  
LIGHTING PLAN

DATE ISSUED:  
03/30/2018

PROJECT NO:  
180088

DRAWING NO:  
**A3.1**



1/4" = 1'-0" A