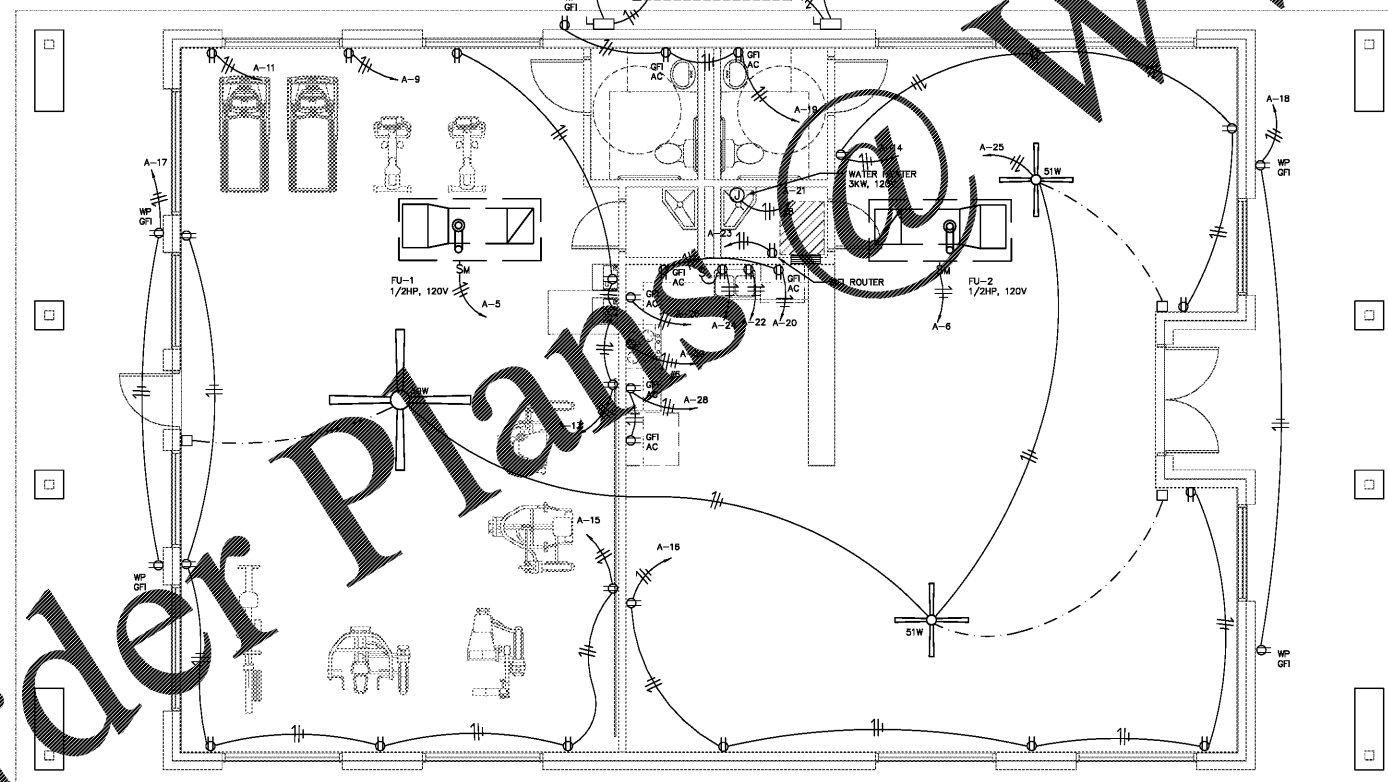


**LIGHTING PLAN**  
SCALE: 1/4" = 1'-0"

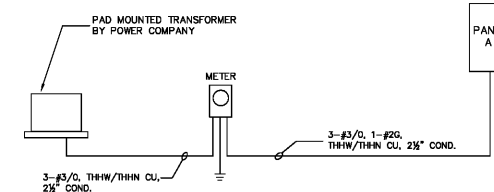


**POWER PLAN**  
SCALE: 1/4" = 1'-0"

- ELECTRICAL SYMBOLS**
- L.E.D. OR FLUORESCENT LIGHTING FIXTURE
  - L.E.D. OR INCANDESCENT LIGHTING FIXTURE
  - EXIT LIGHT
  - DUPLEX RECEPTACLE IN WALL
  - DUPLEX RECEPTACLE IN FLOOR
  - DUPLEX RECEPTACLE IN WALL WITH TOP HALF SWITCHED
  - DUPLEX RECEPTACLE MOUNTED ABOVE COUNTER
  - TELEPHONE OUTLET IN WALL
  - GFI
  - SPST WALL SWITCH
  - SPDT WALL SWITCH
  - DPDT WALL SWITCH
  - WEATHERPROOF
  - WIRE & CONDUIT
  - JUNCTION BOX
  - DISCONNECT SWITCH
  - MOTOR RATED SWITCH
  - MAGNETIC MOTOR STARTER
  - COMBINATION MOTOR STARTER DISCONNECT SWITCH
  - BRANCH CIRCUIT PANELBOARD
  - DISTRIBUTION PANELBOARD
  - 120V LINE VOLTAGE RECEPTACLE
  - "RUN" TO PANELBOARD
  - COMBINATION EXIT SIGN AND EMERGENCY LIGHT WITH TWO HEADS
  - REMOTE HEAD EMERGENCY LIGHT

Load	Amps		Panel		Load
	A	B	A	B	
CU-1	3240	3240	1	A	3240
FU-1	1200	3240	2	B	3240
LIGHTS	350	3240	7	B	350
RECEPTACLES	1000	201	8	A	200
RECEPTACLES	720	1200	11	B	150
RECEPTACLES	1080	201	13	A	900
RECEPTACLES	360	201	15	B	18
RECEPTACLES	540	201	17	A	280
WATER HEATER	3000	40	19	B	1500
WIFI ROUTER	132	201	21	A	1200
CEILING FANS	132	201	23	B	24
SPARE	201	201	25	A	1500
SPARE	201	201	27	B	4000
SPARE	201	201	29	A	1500
SPARE	201	201	31	B	1500
PROVISION	36	37	33	A	34
PROVISION	36	37	35	B	36
PROVISION	41	41	37	A	38
PROVISION	41	41	39	B	40
Totals	9652	8710	41	A	12520
Total Load		584 A		A: 22972 B: 16260	

- NOTES:**
1. ALL SWITCHES AND CONTROL DEVICES SHALL BE MOUNTED 48" AFF UNLESS NOTED OTHERWISE.
  2. ALL RECEPTACLES SHALL BE MOUNTED 18" AFF TO CENTERLINE UNLESS NOTED OTHERWISE.
  3. CIRCUITING SHOWN IS BASED ON COPPER CONDUCTORS. A SEPARATE GROUNDING CONDUCTOR SHALL BE INSTALLED IN ALL CONDUIT RUNS.
  4. MULTIPLE CIRCUITS MAY BE COMBINED IN A SINGLE HOMERUN. IF MORE THAN THREE CURRENT CARRYING CONDUCTORS ARE INSTALLED IN A SINGLE CONDUIT AMPACITY SHALL BE DERATED IN ACCORDANCE WITH THE NATIONAL ELECTRICAL CODE.
  5. EACH MULTIWIRE BRANCH CIRCUIT SHALL BE PROVIDED WITH A MEANS THAT WILL SIMULTANEOUSLY DISCONNECT ALL UNGROUNDED CONDUCTORS AT THE POINT WHERE THE BRANCH CIRCUIT ORIGINATES. INDIVIDUAL SINGLE-POLE CIRCUIT BREAKERS WITH IDENTIFIED HANDLE TIES SHALL BE PERMITTED AS THE PROTECTION FOR EACH UNGROUNDED CONDUCTOR OF MULTIWIRE BRANCH CIRCUITS THAT SERVE ONLY SINGLE-PHASE LINE-TO-NEUTRAL LOADS.



**ELECTRICAL RISER DIAGRAM**  
NO SCALE

PROVIDE CONNECTION TO ALL AVAILABLE ELECTRODES SUCH AS BUILDING STEEL AND COLD WATER PIPING. BOND ALL METALLIC PIPING SYSTEMS.

FOR REVIEW ONLY  
NOT FOR CONSTRUCTION