



LEGEND

 CONCRETE AREA

 SEWER CLEANOUT

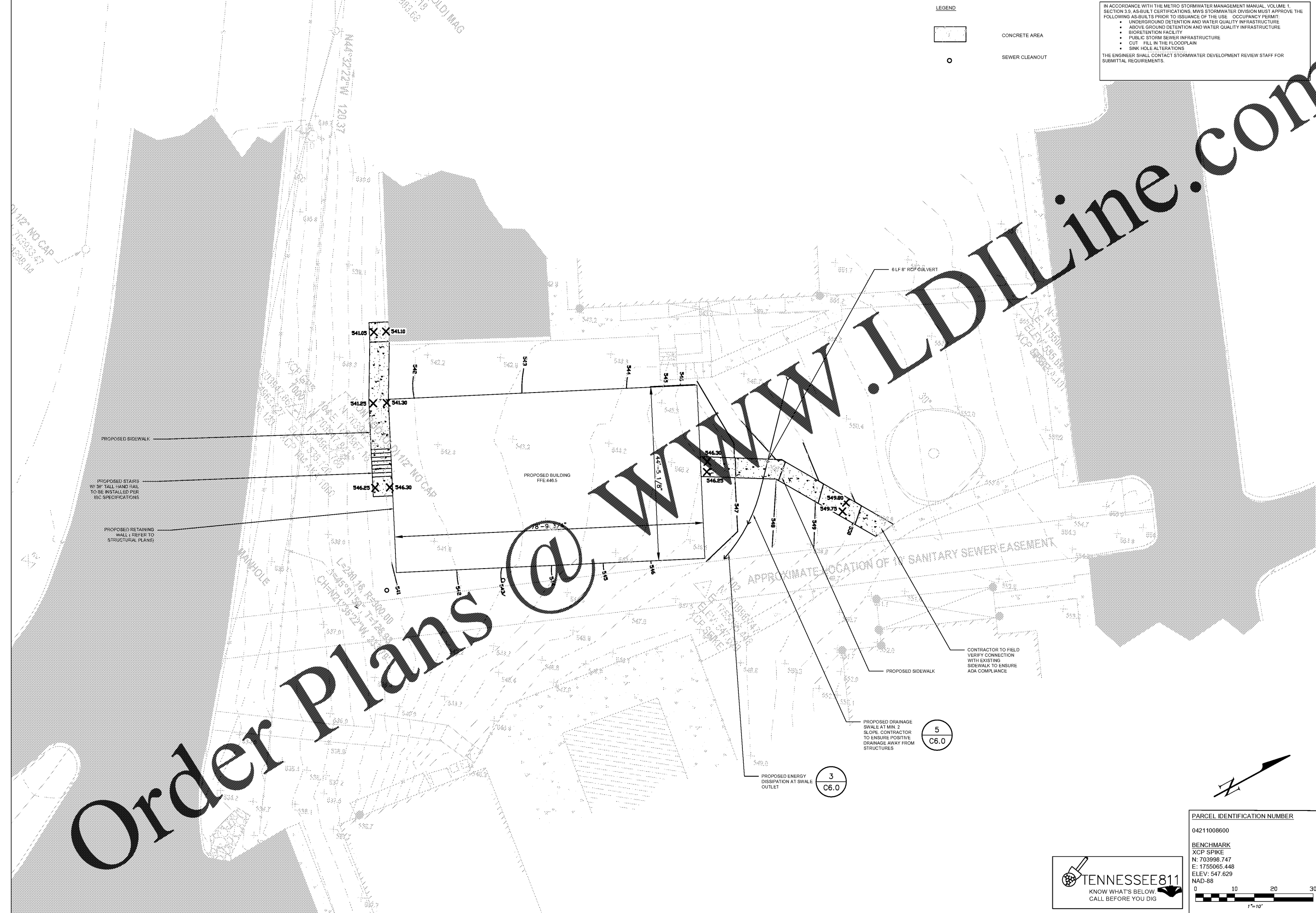
IN ACCORDANCE WITH THE METRO STORMWATER MANAGEMENT MANUAL, VOLUME 1, SECTION 3.9, AS-BUILT CERTIFICATIONS, MWS STORMWATER DIVISION MUST APPROVE THE FOLLOWING AS-BUILTS PRIOR TO ISSUANCE OF THE USE OCCUPANCY PERMIT:

- UNDERGROUND DETENTION AND WATER QUALITY INFRASTRUCTURE
- ABOVE GROUND DETENTION AND WATER QUALITY INFRASTRUCTURE
- BIORETENTION FACILITY
- PUBLIC STORM SEWER INFRASTRUCTURE
- CUT/FILL IN THE FLOODPLAIN
- SINK HOLE ALTERATIONS

THE ENGINEER SHALL CONTACT STORMWATER DEVELOPMENT REVIEW STAFF FOR SUBMITTAL REQUIREMENTS.

WWW.LDILine.com

Order Plans @



600 HERITAGE DRIVE
MADISON, TENNESSEE

SHEET TITLE:
DRAINAGE/GRADING PLAN

S+H ENGINEERING DESIGN CONSULTING
2005 EUGENIA AVENUE, SUITE D
NASHVILLE, TN 37211
TEL: 615.945.1590

DATE: JANUARY 15, 2018
SCALE: 1" = 10'
DRAWN BY: R. BHELDES
REVIEWED BY: T. SMITH

SHEET NUMBER:
C5.0

PARCEL IDENTIFICATION NUMBER
04211008600

BENCHMARK
XCP SPIKE
N: 703998.747
E: 1755065.448
ELEV: 547.629
NAD-88

0 10 20 30
1" = 10'

TENNESSEE811
KNOW WHAT'S BELOW
CALL BEFORE YOU DIG