

LEGEND



CONCRETE AREA



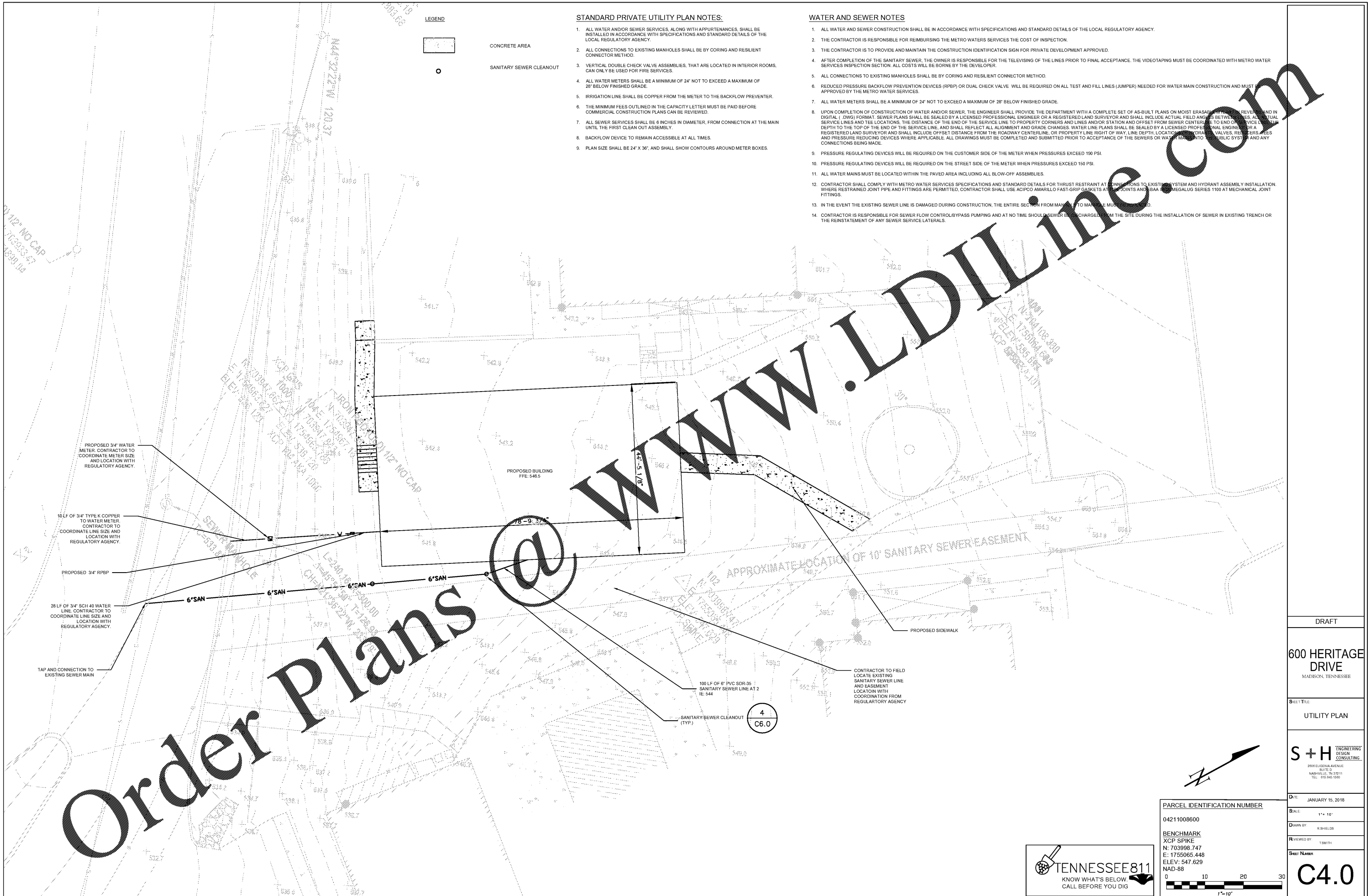
SANITARY SEWER CLEANOUT

STANDARD PRIVATE UTILITY PLAN NOTES:

1. ALL WATER AND/OR SEWER SERVICES, ALONG WITH APPURTENANCES, SHALL BE INSTALLED IN ACCORDANCE WITH SPECIFICATIONS AND STANDARD DETAILS OF THE LOCAL REGULATORY AGENCY.
2. ALL CONNECTIONS TO EXISTING MANHOLES SHALL BE BY CORING AND RESILIENT CONNECTOR METHOD.
3. VERTICAL DOUBLE CHECK VALVE ASSEMBLIES, THAT ARE LOCATED IN INTERIOR ROOMS, CAN ONLY BE USED FOR FIRE SERVICES.
4. ALL WATER METERS SHALL BE A MINIMUM OF 24" NOT TO EXCEED A MAXIMUM OF 28" BELOW FINISHED GRADE.
5. IRRIGATION LINE SHALL BE COPPER FROM THE METER TO THE BACKFLOW PREVENTER.
6. THE MINIMUM FEES OUTLINED IN THE CAPACITY LETTER MUST BE PAID BEFORE COMMERCIAL CONSTRUCTION PLANS CAN BE REVIEWED.
7. ALL SEWER SERVICES SHALL BE 6 INCHES IN DIAMETER, FROM CONNECTION AT THE MAIN UNTIL THE FIRST CLEAN OUT ASSEMBLY.
8. BACKFLOW DEVICE TO REMAIN ACCESSIBLE AT ALL TIMES.
9. PLAN SIZE SHALL BE 24" X 36", AND SHALL SHOW CONTOURS AROUND METER BOXES.

WATER AND SEWER NOTES

1. ALL WATER AND SEWER CONSTRUCTION SHALL BE IN ACCORDANCE WITH SPECIFICATIONS AND STANDARD DETAILS OF THE LOCAL REGULATORY AGENCY.
2. THE CONTRACTOR IS RESPONSIBLE FOR REIMBURSING THE METRO WATERS SERVICES THE COST OF INSPECTION.
3. THE CONTRACTOR IS TO PROVIDE AND MAINTAIN THE CONSTRUCTION IDENTIFICATION SIGN FOR PRIVATE DEVELOPMENT APPROVED.
4. AFTER COMPLETION OF THE SANITARY SEWER, THE OWNER IS RESPONSIBLE FOR THE TELEVISIONING OF THE LINES PRIOR TO FINAL ACCEPTANCE. THE VIDEO TAPING MUST BE COORDINATED WITH METRO WATER SERVICES INSPECTION SECTION. ALL COSTS WILL BE BORNE BY THE DEVELOPER.
5. ALL CONNECTIONS TO EXISTING MANHOLES SHALL BE BY CORING AND RESILIENT CONNECTOR METHOD.
6. REDUCED PRESSURE BACKFLOW PREVENTION DEVICES (RPBP) OR DUAL CHECK VALVE WILL BE REQUIRED ON ALL TEST AND FILL LINES (JUMPER) NEEDED FOR WATER MAIN CONSTRUCTION AND MUST BE APPROVED BY THE METRO WATER SERVICES.
7. ALL WATER METERS SHALL BE A MINIMUM OF 24" NOT TO EXCEED A MAXIMUM OF 28" BELOW FINISHED GRADE.
8. UPON COMPLETION OF CONSTRUCTION OF WATER AND/OR SEWER, THE ENGINEER SHALL PROVIDE THE DEPARTMENT WITH A COMPLETE SET OF AS-BUILT PLANS ON MOIST ERASABLE PAPER, REVERSED AND IN DIGITAL (.DWG) FORMAT. SEWER PLANS SHALL BE SEALED BY A LICENSED PROFESSIONAL ENGINEER OR A REGISTERED LAND SURVEYOR AND SHALL INCLUDE ACTUAL FIELD ANGLES BETWEEN LINES, ALL ACTUAL SERVICE LINES AND TEE LOCATIONS, THE DISTANCE OF THE END OF THE SERVICE LINE TO PROPERTY CORNERS AND LINES AND/OR STATION AND OFFSET FROM SEWER CENTERLINE TO END OF SERVICE LINE DEPTH TO THE TOP OF THE END OF THE SERVICE LINE, AND SHALL REFLECT ALL ALIGNMENT AND GRADE CHANGES. WATER LINE PLANS SHALL BE SEALED BY A LICENSED PROFESSIONAL ENGINEER OR A REGISTERED LAND SURVEYOR AND SHALL INCLUDE OFFSET DISTANCE FROM THE ROADWAY CENTERLINE, OR PROPERTY LINE RIGHT OF WAY, LINE DEPTH, LOCATION OF VALVES, REDUCERS, FEES AND PRESSURE REDUCING DEVICES WHERE APPLICABLE. ALL DRAWINGS MUST BE COMPLETED AND SUBMITTED PRIOR TO ACCEPTANCE OF THE SEWERS OR WATER MAINS TO A PUBLIC SYSTEM AND ANY CONNECTIONS BEING MADE.
9. PRESSURE REGULATING DEVICES WILL BE REQUIRED ON THE CUSTOMER SIDE OF THE METER WHEN PRESSURES EXCEED 150 PSI.
10. PRESSURE REGULATING DEVICES WILL BE REQUIRED ON THE STREET SIDE OF THE METER WHEN PRESSURES EXCEED 150 PSI.
11. ALL WATER MAINS MUST BE LOCATED WITHIN THE PAVED AREA INCLUDING ALL BLOW-OFF ASSEMBLIES.
12. CONTRACTOR SHALL COMPLY WITH METRO WATER SERVICES SPECIFICATIONS AND STANDARD DETAILS FOR THRUST RESTRAINT AT CONNECTIONS TO EXISTING SYSTEM AND HYDRANT ASSEMBLY INSTALLATION, WHERE RESTRAINED JOINT PIPE AND FITTINGS ARE PERMITTED. CONTRACTOR SHALL USE ACIPCO AMARILLO FAST-GRIP GASKETS AT ALL JOINTS AND SEABEAM MEGALUG SERIES 1100 AT MECHANICAL JOINT FITTINGS.
13. IN THE EVENT THE EXISTING SEWER LINE IS DAMAGED DURING CONSTRUCTION, THE ENTIRE SECTION FROM MAINLINE TO MAINLINE MUST BE REPAIRED.
14. CONTRACTOR IS RESPONSIBLE FOR SEWER FLOW CONTROL BY PASS PUMPING AND AT NO TIME SHOULD SEWER BE DISCHARGED FROM THE SITE DURING THE INSTALLATION OF SEWER IN EXISTING TRENCH OR THE REINSTATEMENT OF ANY SEWER SERVICE LATERALS.



DRAFT

600 HERITAGE DRIVE
MADISON, TENNESSEE

UTILITY PLAN

S+H ENGINEERING
DESIGN
CONSULTING
2806 EUGENIA AVENUE
SUITE D
NASHVILLE, TN 37211
TEL: 615.945.1590

DATE: JANUARY 15, 2018

SCALE: 1" = 10'

DRAWN BY: R. BHELDS

REVIEWED BY: T. SMITH

SHEET NUMBER

C4.0

PARCEL IDENTIFICATION NUMBER

04211008600

BENCHMARK
XCP SPIKE
N: 703998.747
E: 1755065.448
ELEV: 547.629
NAD-88

