

Fire System Information - Job#2555728

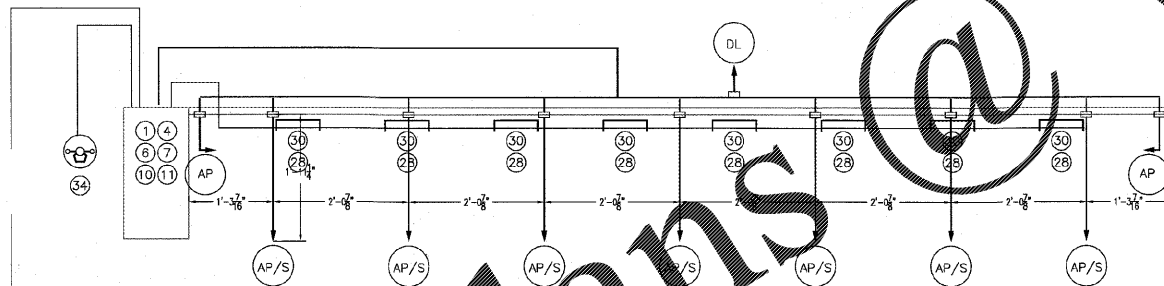
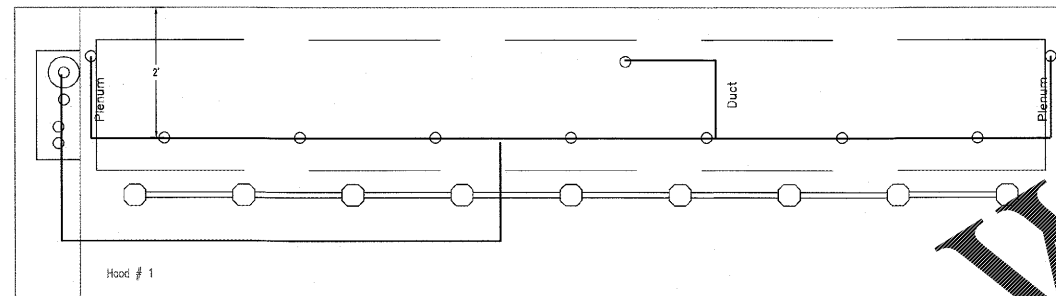
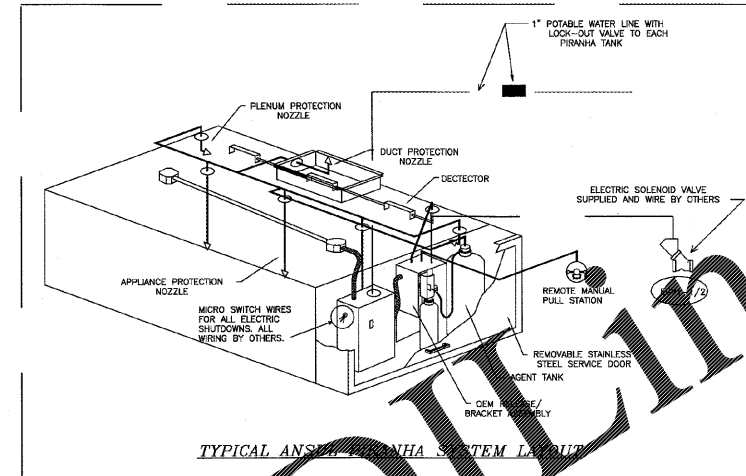
| FIRE SYSTEM NO. | Tag | TYPE | SIZE | FLOW POINTS | INSTALLATION | |
|-----------------|-----|---------------|------|-------------|-------------------|------------------|
| | | | | | SYSTEM | LOCATION ON HOOD |
| 1 | | Ansul Piranha | 10 | 3 | Fire Cabinet Left | Left |

Fire System Parts List Key

| FIRE SYSTEM NO. | TAG | KEY NUMBER - PART DESCRIPTION | QTY. BY FACTORY | QTY. BY DIST. |
|-----------------|-----|-----------------------------------------------------------------------------------------------------------------------------------------------------------------|-----------------|---------------|
| | | 0 - 0 - METALCAP-CB BLOWOFF CAP - Metal | 10 | 0 |
| | | 1 - 1 - P-MRR-DEM REGULATED RELEASE - Ansul Automan Mechanical Regulated Release, (OEM, PIRANHA) (423629) Cartridge Detection Included | 1 | 0 |
| | | 4 - 4 - P-10 TANK - 2.25 Gallon Stainless Steel Tank Assembly (PIRANHA-10) | 1 | 0 |
| | | 6 - 6 - PRX LIQUID AGENT PRX (AS NEEDED) | 0 | 1 |
| | | 7 - 7 - LT-30-R LT-30-R CARTRIDGE | 0 | 1 |
| | | 10 - 10 - TLNK TEST LINK (1 test link) | 0 | 1 |
| | | 11 - 11 - MICRO-SDA MICROSWITCH KIT - Includes 2 switches and Mounting Hardware, Single Dual Electric Switch, One Standard Switch, One Alarm Duty Switch 437155 | 1 | 0 |
| | | 15 - 15 - 423572 SWIVEL ADAPTOR (419385) | 7 | 0 |
| | | 17 - 17 - 426092 NOZZLE - DL Nozzle, Duct/Low Proximity, Piranha (Replaces ANSUL Part# 426092) A0005170 | 1 | 0 |
| | | 18 - 18 - 423482 NOZZLE - AP Nozzle, Appliance/Plenum, Piranha (Replaces ANSUL Part# 423482) A0001263 | 9 | 0 |
| | | 26 - 26 - QSA-3/8 QUIK SEAL - 3/8" (UL) | 10 | 0 |
| | | 27 - 27 - QPSA-1/2 PULLY SEAL - 1/2" Hood Seal (UL) | 1 | 0 |
| | | 28 - 28 - S-DET SERIES DETECTOR SCISSOR LINKAGE NEW#435547/435548 (OLD#417369/434480) | 8 | 0 |
| | | 30 - 30 - ANS-500FL FUSIBLE LINK - 500deg F, R-102 and PIRANHA | 8 | 0 |
| | | 34 - 34 - RFS-A REMOTE PULL STATION - Aluminum (with 50ft wire rope) Part# 54011 (Old Mccole #05-54011/435960) | 1 | 0 |
| | | 35 - 35 - PE-LT LOW TEMP PULLY ELBOW | 2 | 0 |
| | | 36 - 36 - PE-HT HIGH TEMP PULLY ELBOW (423250) | 1 | 0 |

ANSUL "PIRANHA" SYSTEM NOTES

PLUMBING CONTRACTOR TO CONNECT THE WATER FLOW VALVE AT EACH FIRE SYSTEM TANK TO THE BUILDINGS POTABLE WATER SUPPLY BY A 1" WATER LINE FLOWING WATER PRESSURE BETWEEN 33 AND 100 PSI. THIS WATER LINE MUST BE DEDICATED TO THE PIRANHA SYSTEM AND MUST INCLUDE A SINGLE, FULL FLOW, INDICATING, LOCKED OPEN, TAMPERPROOF SHUT OFF VALVE AND MUST BE CONNECTED TO THE POTABLE WATER SUPPLY LINE IMMEDIATELY DOWNSTREAM FROM THE MAIN SHUT OFF VALVE.



- NOTES
- FIELD PIPE DROPS AS SHOWN
 - SLEEVING, ELBOWS, TEES AND NOZZLES SHOWN BY CAS
 - RELOCATE NOZZLES IF FLOW PATTERN IS BLOCKED BY SHELVING, SALAMANDERS, ETC.
 - MINIMUM 9 ELBOWS IN SUPPLY LINE
 - MINIMUM 72 INCHES OF AGENT LINE FROM TANK TO FIRST NOZZLE.
 - IF APPLICABLE, PRE-PIPED CHARBROILER DROPS ARE SHIPPED LOOSE.
 - FACTORY DIMENSIONS EXTENDS A MAXIMUM OF 6" ABOVE THE TOP OF THE HOOD.
 - DIMENSION DIMENSIONS LISTED REPRESENT THE COOKING SURFACE SIZE NOT THE OVERALL APPLIANCE SIZE.
 - THIS FIRE SYSTEM COMPLIES WITH UL 300 REQUIREMENTS

Job #: 2492060
 Job Name - Cook Out
 Drawn By:
 System Size: PIRANHA-10 Total FP required: 10
 Hood # 1 15' 0.00" Long x 54" Wide x 24" High
 Riser # 1 Size: 10" x 34"
 Hood # 1 Metal Blow-Off Caps included.

LEGEND - ANSUL PIRANHA SYSTEM

- 1 PIRANHA MECHANICAL REGULATED RELEASE ASSEMBLY
- 2 PIRANHA REGULATED ACTUATOR ASSEMBLY
- 3 PIRANHA 7 TANK (1.5 GALLON)
- 4 PIRANHA 10 TANK (2.25 GALLON)
- 5 PIRANHA 13 TANK (3.0 GALLON)
- 6 PRX LIQUID FIRE SUPPRESSANT
- 7 LT-30-R NITROGEN CARTRIDGE
- 8 LT-20-R NITROGEN CARTRIDGE
- 9 DOUBLE TANK CARTRIDGE
- 10 TEST LINK
- 11 DOUBLE MICROSWITCH
- DL DUCT NOZZLE
- AP APPLIANCE/PLENUM NOZZLE
- AP/S APPLIANCE/PLENUM NOZZLE WITH SWIVEL ADAPTOR
- 28 DETECTOR BRACKET
- 29 LOW TEMP FUSIBLE LINK
- 30 HIGH TEMP FUSIBLE LINK
- MGV MECHANICAL GAS VALVE
- EGV ELECTRICAL GAS VALVE
- 34 REMOTE MANUAL PULL STATION

FOR QUESTIONS, CALL THE
 PIEDMONT NORTH CAROLINA OFFICE
 LONNIE GRANT (REGIONAL MANAGER)
 PHONE: 336-996-8484, FAX: 336-996-0418
 EMAIL: reg30@captiveaire.com

| REVISIONS | |
|-------------|------|
| DESCRIPTION | DATE |
| | |
| | |
| | |
| | |

CAPTIVEAIR

PIEDMONT AREA OFFICE

496 BUCKHURST DR., KERNERSVILLE, NC 27284 PHONE: (336) 996-8484 FAX: (336) 996-0418 EMAIL: reg30@captiveaire.com

COOK OUT (P-15')

DATE: 7/21/17

DWG.#:
COOKOUT(P-15')

DRAWN BY:
LAG

SCALE:
NTS

PIRANHA SYSTEM

SHEET NO.

2

Order Plans @ WWW.LDLINE.COM