

HOOD INFORMATION - Job#293662

| HOOD NO. | TAG | MODEL | LENGTH | MAX. COOKING TEMP. | EXHAUST FLENUM (PRESSURE) | | | | MUA CFM | AC CFM | HOOD CONSTRUCTION | HOOD CONFIG. | | | |
|----------|-----|---------------------|-----------|--------------------|---------------------------|-------|--------|-----|---------|--------|-------------------|--------------|-------------------------|------------|-------|
| | | | | | WIDTH | LENG. | HEIGHT | DA. | | | | CFM | S.P. | END TO END | ROW |
| 1 | | 5424 ND-2-ACPS-F | 15' 0.00" | 600 Dep. | 3900 | 9" | 37" | 4" | 3900 | -0.70" | 2912 | 660 | 430 SS Where Exposed | ALONE | ALONE |

HOOD INFORMATION

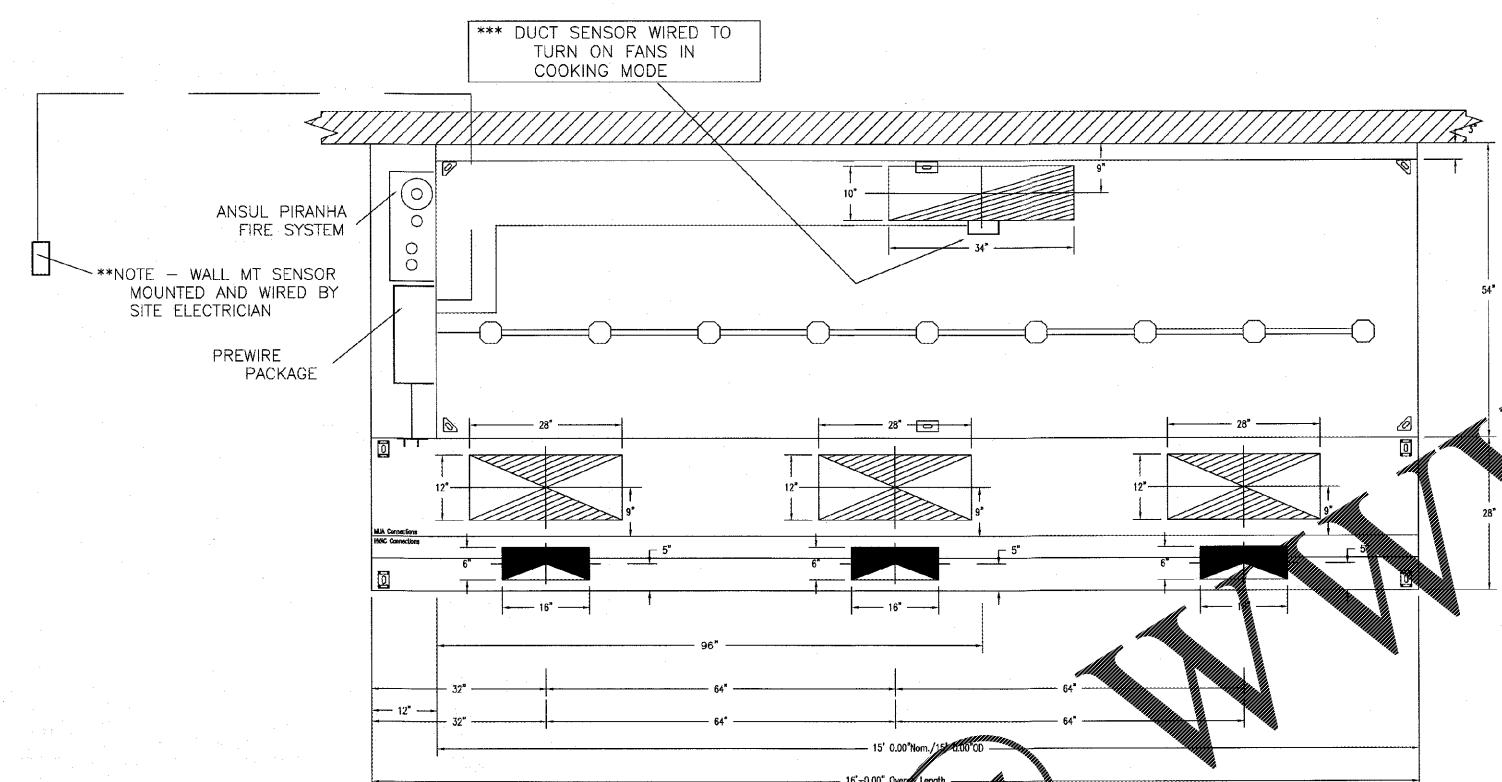
| HOOD NO. | TAG | TYPE | QTY. | HEIGHT | LENGTH | EFFICIENCY @ 9 MICRONS | QTY. | LIGHT(S) | TYPE | WIRE GUARD | LOCATION | SIZE | UTILITY CABINETS | | ELECTRICAL | SWITCHES | FIRE SYSTEM PFWING | HOOD HANGING HEIGHT |
|----------|-----|------------------------|------|--------|--------|------------------------|------|----------------|------|------------|----------|-------------|------------------|------|------------|------------------|--------------------|---------------------|
| | | | | | | | | | | | | | FIRE SYSTEM | SIZE | | | | |
| 1 | | SS Battle with Handles | 11 | 16" | 16" | 30% | 9 | L55 Series E26 | NO | NO | Left | 12"x54"x24" | Arad Piranha | 10 | SC-31110FP | 1 Light 1 Fan | YES | 1030 LBS |

HOOD OPTIONS

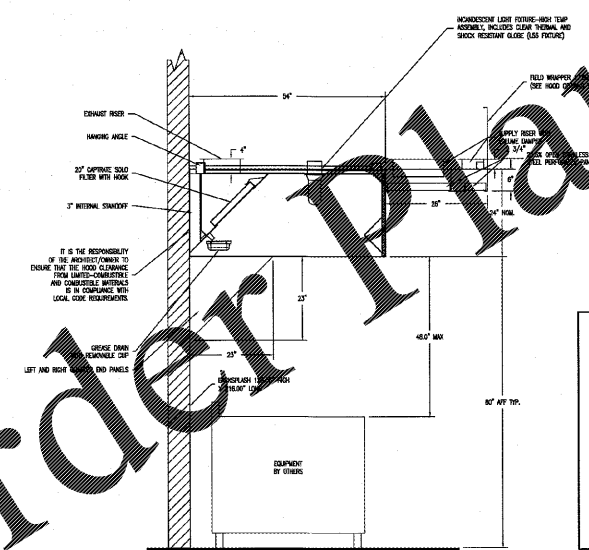
| HOOD NO. | TAG | OPTION |
|----------|-----|--|
| 1 | | FIELD WRAPPER 17.00" High Front, Left, Right BACKSPASH 120.00" High X 240.00" Long 430 SS Vertical LEFT QUARTER END PANEL 23" Top Width, 0" Bottom Width, 23" High 430 SS RIGHT QUARTER END PANEL 23" Top Width, 0" Bottom Width, 23" High 430 SS STRUCTURAL FRONT PANEL |

PERFORATED SUPPLY PLENUM(S)

| HOOD NO. | TAG | POS. | LENGTH | WIDTH | HEIGHT | TYPE | RISER(S) | | | |
|----------|-----|-------|--------|-------|--------|------|----------|-------|-----|--------|
| | | | | | | | WIDTH | LENG. | DA. | S.P. |
| 1 | | Front | 152" | 28" | 6" | MUA | 12" | 28" | 970 | 0.297" |
| | | | | | | MUA | 12" | 28" | 970 | 0.297" |
| | | | | | | AC | 6" | 16" | 220 | 0.074" |
| | | | | | | AC | 6" | 16" | 220 | 0.074" |
| | | | | | | AC | 6" | 16" | 220 | 0.074" |



PLAN VIEW - Job#293662
 15' 0.00" LONG 5424ND-2-ACPS-F
 NOTE: Additional hanging heights provided for hoods and lines.
 ACPSF ships loose for field installation



SECTION VIEW - MODEL 5424ND-2-ACPS-F

***** NOTE *****
 ALL WALLS THAT COME WITHIN 18" OF HOOD MUST BE METAL STUDS AND SHEETROCK. WOOD STUDS NOT ALLOWED.

CAPTIVE-AIRE HOODS ARE BUILT IN COMPLIANCE WITH

 NFA #96
 NSF
 UL 710 & ULC710 STANDARDS
 E.T.L. LISTED 3054804-001

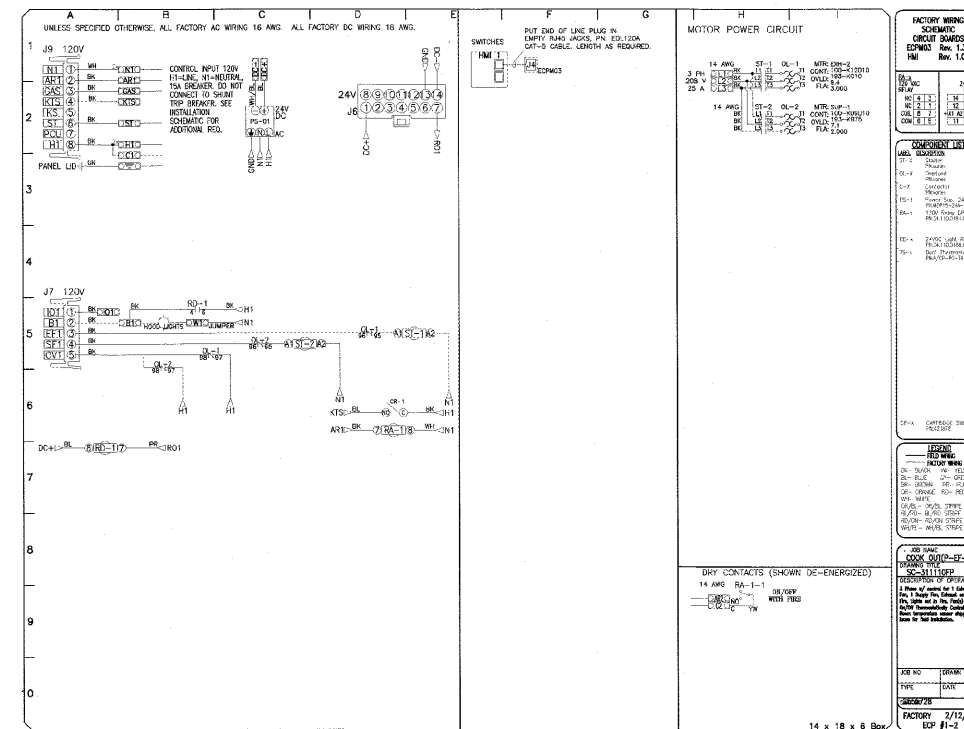
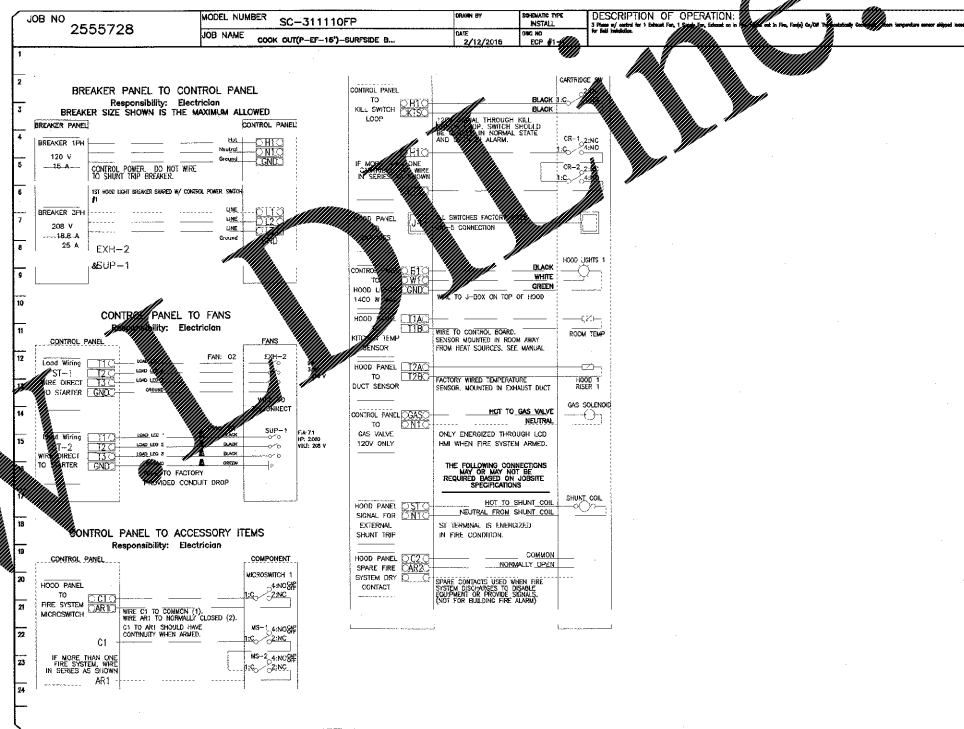
VERIFY CEILING HEIGHT
 Height required to verify that the hood will fit and to size the enclosure panels

FOR QUESTIONS, CALL THE
 PIEDMONT NORTH CAROLINA OFFICE
 LONNIE GRANT (REGIONAL MANAGER)
 PHONE: 336-996-8484, FAX: 336-996-0418
 EMAIL: reg30@captiveaire.com

PREWIRE PACKAGE INFORMATION

ELECTRICAL PACKAGES - Job#2555728

| NO. | TAG | PACKAGE # | LOCATION | SWITCHES | | OPTION | FANS CONTROLLED | | | |
|-----|-----|------------|----------------------|----------------------------------|----------|-------------------------------------|-----------------|---|------|-----|
| | | | | LOCATION | QUANTITY | | TYPE | # | FLA | |
| 1 | | SC-31110FP | Utility Cabinet Left | Utility Cabinet Left Hood # 1 | 1 Light | Smart Controls Thermostatic Control | Supply | 3 | 2000 | 5.9 |
| | | | | | | | Exhaust | 3 | 2000 | 9.6 |



REVISIONS

| NO. | DESCRIPTION | DATE |
|-----|-------------|------|
| | | |
| | | |
| | | |

www.captiveaire.com

CAPTIVE-AIRE

PIEDMONT AREA OFFICE

485 BUCKHURST DR., KERNERSVILLE, NC 27284 PHONE: (336) 996-8484 FAX: (336) 996-0418 EMAIL: reg30@captiveaire.com

COOK OUT (P-15')

DATE: 7/21/17

DWG.#: COOKOUT(P-2017)

DRAWN BY: LAG

SCALE: NTS

HOOD

SHEET NO. 1